

# MidTown - Cleveland Monument Sign - Charles Young Park Conceptual Design **02.3**



PROJECT MANAGER  
Bruce Farkas

DESIGNER  
Chris DiAlfredi

PROSPECT/CLIENT  
MidTown Cleveland

PROJECT  
Neighborhood Entry  
Monument Sign

PROJECT LOCATION  
Colonel Charles Young Park  
SE Corner - Intersection of  
Prospect Street and E. 46th  
Street - Cleveland, OH 44103

DATE CREATED  
08/05/2019



MidTown - Cleveland  
Monument Sign - Charles Young Park  
Conceptual Design 02.3 - Location Rendering

Conceptual Rendering - Northwest View



PROJECT MANAGER

Bruce Farkas

DESIGNER

Chris DiAlfredi

PROSPECT/CLIENT

MidTown Cleveland

PROJECT

Neighborhood Entry  
Monument Sign

PROJECT LOCATION

Colonel Charles Young Park  
SE Corner - Intersection of  
Prospect Street and E. 46th  
Street - Cleveland, OH 44103

DATE CREATED

08/05/2019

DESIGN TYPE

Location Rendering

DESIGN VERSION

02.3

REVISIONS

07/17/2019 - Added view  
from 120'; Google Maps site  
view

08/05/2019 - Reduced sign  
width to 10' (proportionally)

SCALE

As Noted

PAGE

02 of 04



**SIGNATURE SIGN Co.**  
CLEVELAND

1776 East 43<sup>rd</sup> Street  
Cleveland, Ohio 44103  
Phone: (216) 426-1234  
[www.signaturesigncompany.com](http://www.signaturesigncompany.com)



This document and its contents are the exclusive intellectual property of Signature Sign Company. This document contains confidential and proprietary information and cannot not be disclosed or reproduced, in whole or part, without expressed written authorization from Signature Sign Company. Unauthorized use of information derived from this document is strictly forbidden and will be subject to U.S. and International copyright laws. Copyright © 2019 Signature Sign Company. All rights reserved.

MidTown - Cleveland  
Monument Sign - Charles Young Park  
Conceptual Design **02.3** - Location Rendering @ 120'  
(See Page 04)

Conceptual Rendering - Northwest View



PROJECT MANAGER

Bruce Farkas

DESIGNER

Chris DiAlfredi

PROSPECT/CLIENT

MidTown Cleveland

PROJECT

Neighborhood Entry  
Monument Sign

PROJECT LOCATION

Colonel Charles Young Park  
SE Corner - Intersection of  
Prospect Street and E. 46th  
Street - Cleveland, OH 44103

DATE CREATED

08/05/2019

DESIGN TYPE

Location Rendering

DESIGN VERSION

02.3

REVISIONS

07/17/2019 - Added view  
from 120'; Google Maps site  
view

08/05/2019 - Reduced sign  
width to 10' (proportionally)

SCALE

As Noted

PAGE

03 of 04



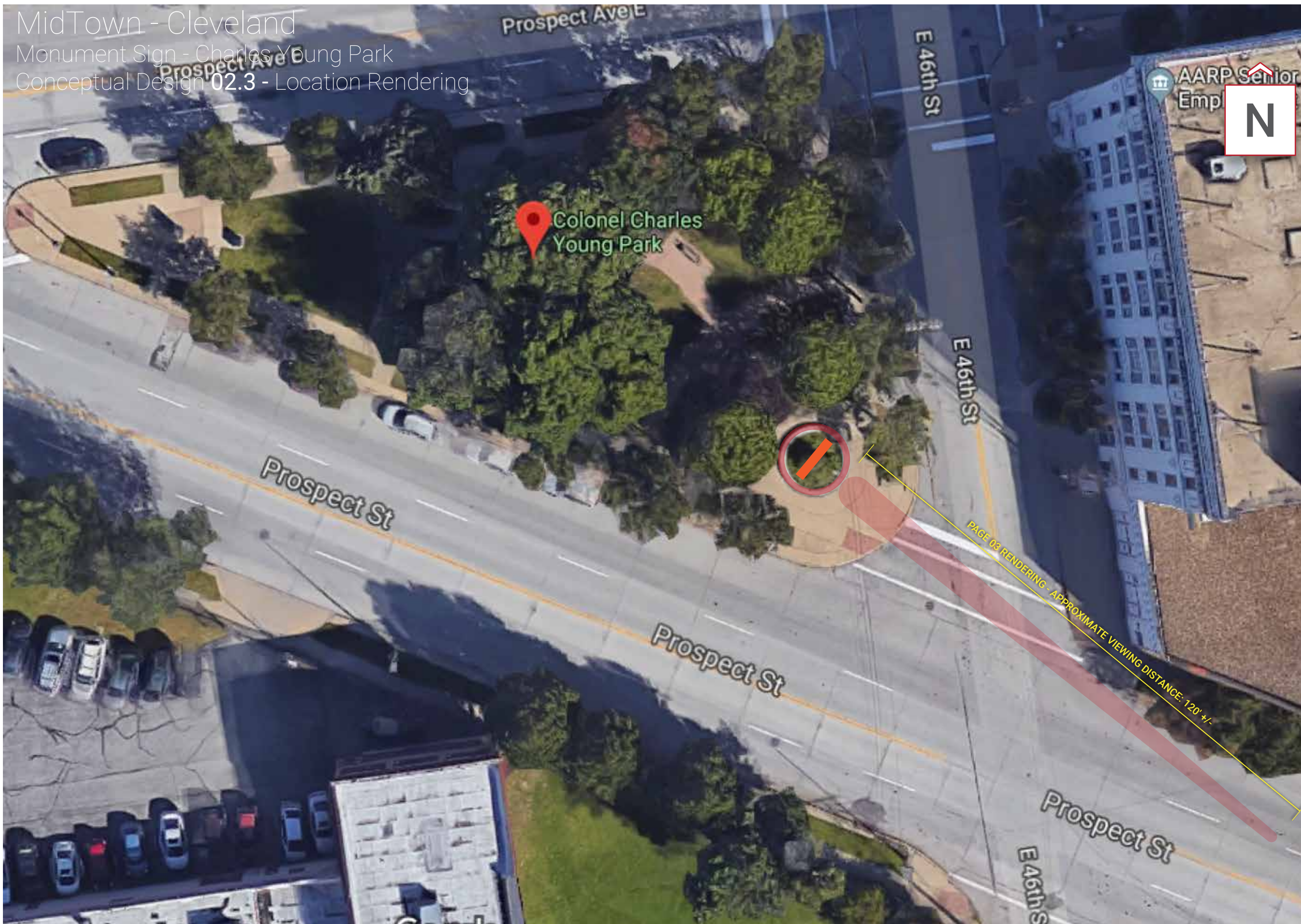
**SIGNATURE SIGN Co.**  
CLEVELAND

1776 East 43<sup>rd</sup> Street  
Cleveland, Ohio 44103  
Phone: (216) 426-1234  
[www.signaturesigncompany.com](http://www.signaturesigncompany.com)



This document and its contents are the exclusive intellectual property of Signature Sign Company. This document contains confidential and proprietary information and cannot not be disclosed or reproduced, in whole or part, without expressed written authorization from Signature Sign Company. Unauthorized use of information derived from this document is strictly forbidden and will be subject to U.S. and International copyright laws. Copyright © 2019 Signature Sign Company. All rights reserved.

MidTown - Cleveland  
 Monument Sign - Charles Young Park  
 Conceptual Design 02.3 - Location Rendering



PROJECT MANAGER

Bruce Farkas

DESIGNER

Chris DiAlfredi

PROSPECT/CLIENT

MidTown Cleveland

PROJECT

Neighborhood Entry  
 Monument Sign

PROJECT LOCATION

Colonel Charles Young Park  
 SE Corner - Intersection of  
 Prospect Street and E. 46th  
 Street - Cleveland, OH 44103

DATE CREATED

08/05/2019

DESIGN TYPE

Location Rendering

DESIGN VERSION

02.3

REVISIONS

07/17/2019 - Added view  
 from 120'; Google Maps site  
 view

08/05/2019 - Reduced sign  
 width to 10' (proportionally)

SCALE

As Noted

PAGE

04 of 04



**SIGNATURE SIGN Co.**  
 CLEVELAND

1776 East 43<sup>rd</sup> Street  
 Cleveland, Ohio 44103  
 Phone: (216) 426-1234  
 www.signaturesigncompany.com

This document and its contents are the exclusive intellectual property of Signature Sign Company. This document contains confidential and proprietary information and cannot not be disclosed or reproduced, in whole or part, without expressed written authorization from Signature Sign Company. Unauthorized use of information derived from this document is strictly forbidden and will be subject to U.S. and International copyright laws. Copyright © 2019 Signature Sign Company. All rights reserved.

