



CLEVELAND MOUNTED POLICE STABLES / COMMUNITY EQUESTRIAN CENTER  
ALTERNATIVE SITES STUDY



STUDY SITE LOCATIONS

CLEVELAND MOUNTED POLICE / COMMUNITY EQUESTRIAN CENTER SITE SELECTION ANALYSIS

	1	2	3	4	5	6	7	8	9	10	11	12	
	Size/Fit	Location (Context / Neighborhood)	Distance	Cost	Ownership	Other development opportunities	Community Engagement	Noise	Code Issues	Future Expansion Possibility	Route	Access	
Weight:	1	1	1	1	1	1	1	1	1	1	1	1	Weighting sum: 12
Tennis Courts	3	4	7	8	10	3	3	4	4	0	6	5	Weighted Score out of 100
Kirtland Park	7	5	8	2	10	5	4	4	7	1	6	4	47.50
Wendy Park	7	6	3	3	2	2	7	5	4	2	0	2	52.50
Tri-C	6	7	8	3	0	1	7	7	7	4	6	6	35.83
Thackeray	8	8	6	8	10	5	7	9	7	9	7	7	51.67
ODOT1	8	4	8	3	1	1	3	4	5	6	7	7	75.83
ODOT2	8	4	8	3	1	1	3	4	5	6	7	7	47.50
													47.50

CLEVELAND MOUNTED POLICE / COMMUNITY EQUESTRIAN CENTER SITE SELECTION ANALYSIS

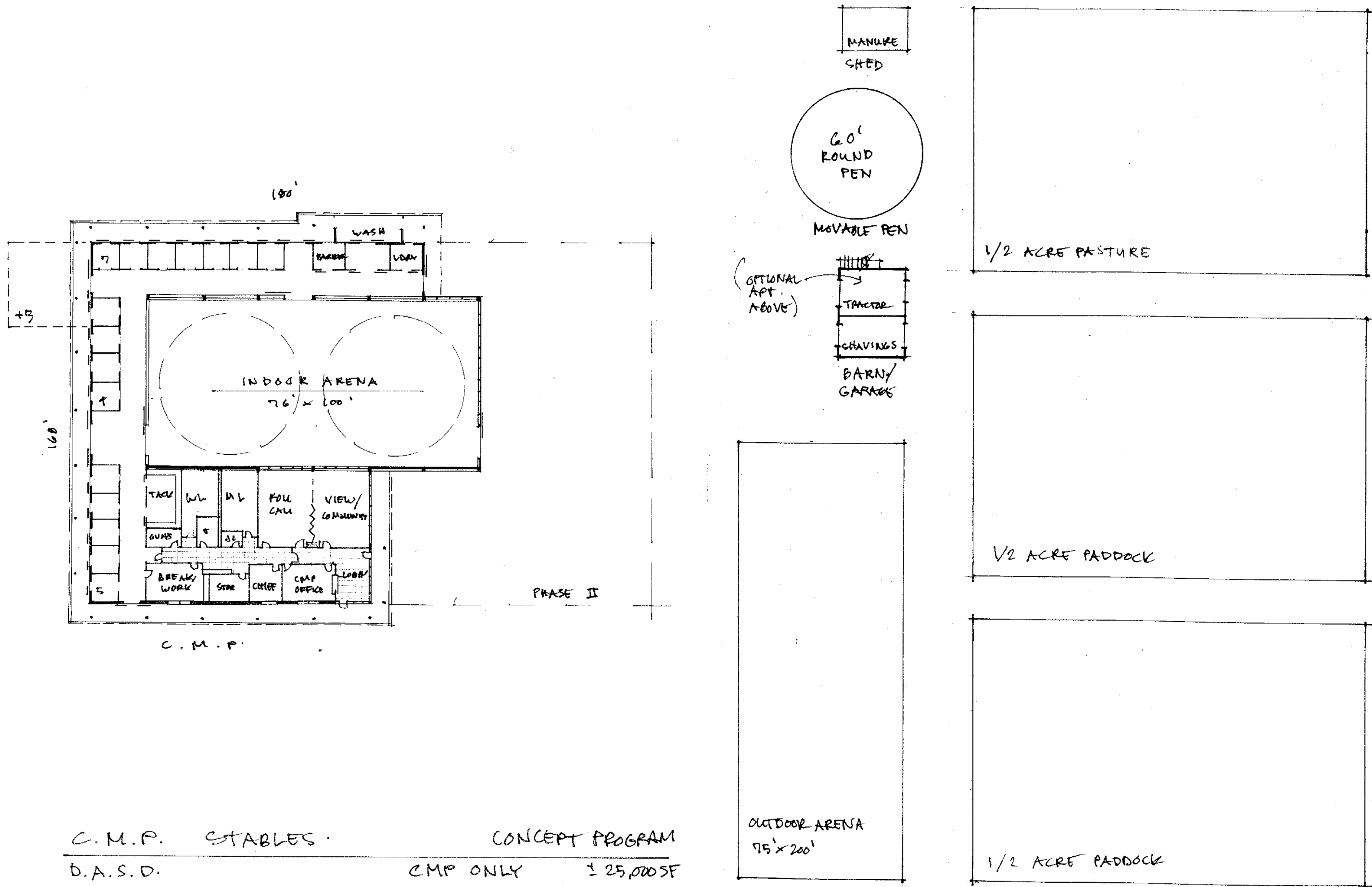
		1	2	3	4	5	6	7	8	9	10	11	12	
		Size/Fit	Location (Context / Neighborhood)	Distance	Cost	Economic Development Score	Planning Score	Community Engagement	Noise	Code Issues	Future Expansion Possibility	Route	Access	
	Weight:	2	1.5	1.5	1.5	1	1	1	1	1	1	0.8	0.8	Weighting sum: 14.1
Thackeray	CMP Only	7	8	7	8	5	2	7	9	7	9	7	7	Weighted Score out of 100
	CMP + C.E.C.	10	9	7	7	5	2	8	9	7	8	8	8	70.00
Kirtland	CMP Only	7	5	8	6	5	3	4	4	7	1	6	4	75.39
	CMP + C.E.C.	3	4	8	2	5	3	3	3	7	0	4	3	52.84
														38.01

SITE SELECTION ANALYSIS

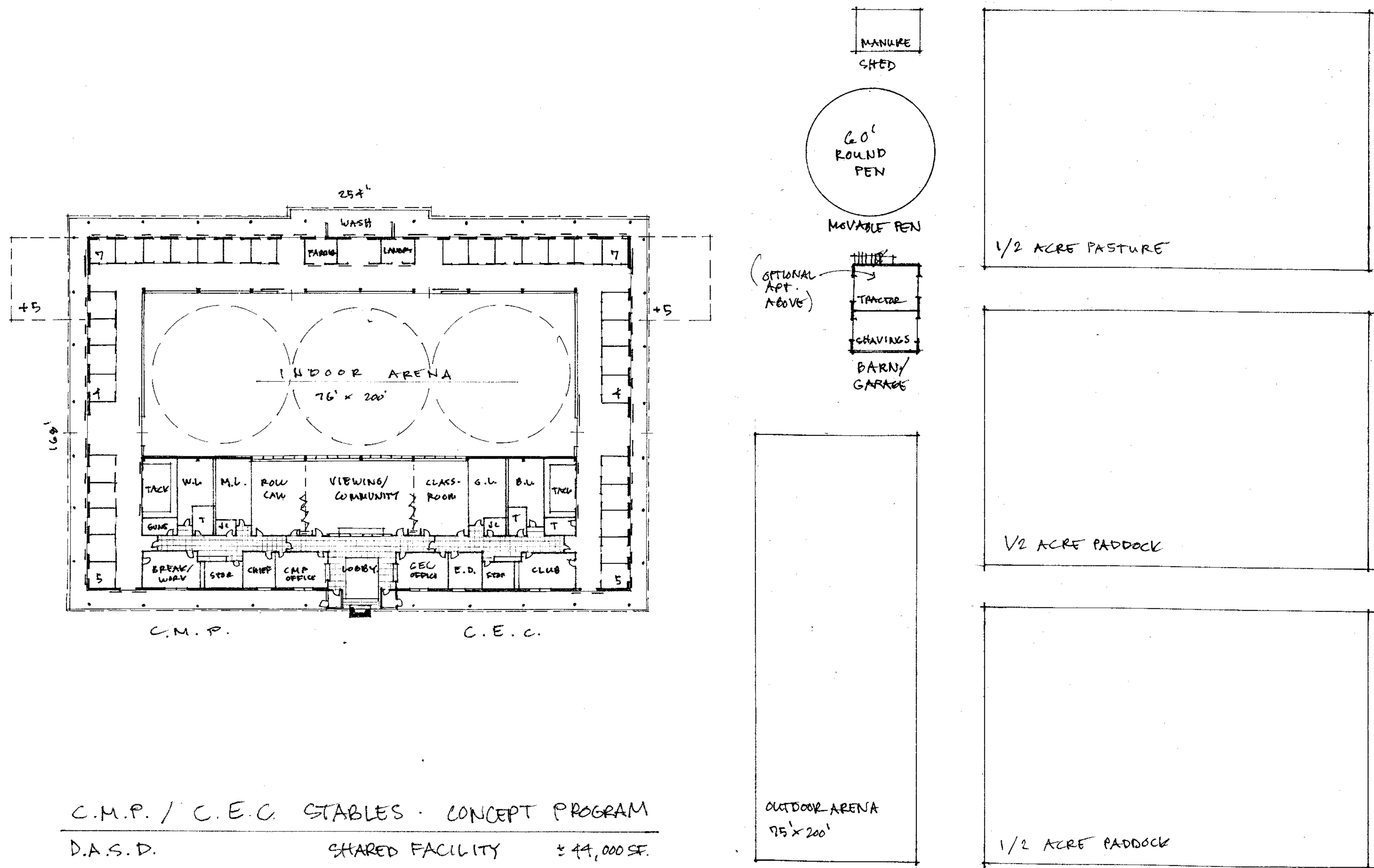




**CLEVELAND MOUNTED POLICE STABLES / COMMUNITY EQUESTRIAN CENTER**  
**ALTERNATIVE SITES STUDY**



**CONCEPTUAL PROGRAM: CLEVELAND MOUNTED POLICE**



**CONCEPTUAL PROGRAM: CLEVELAND MOUNTED POLICE & COMMUNITY EQUESTRIAN CTR.**

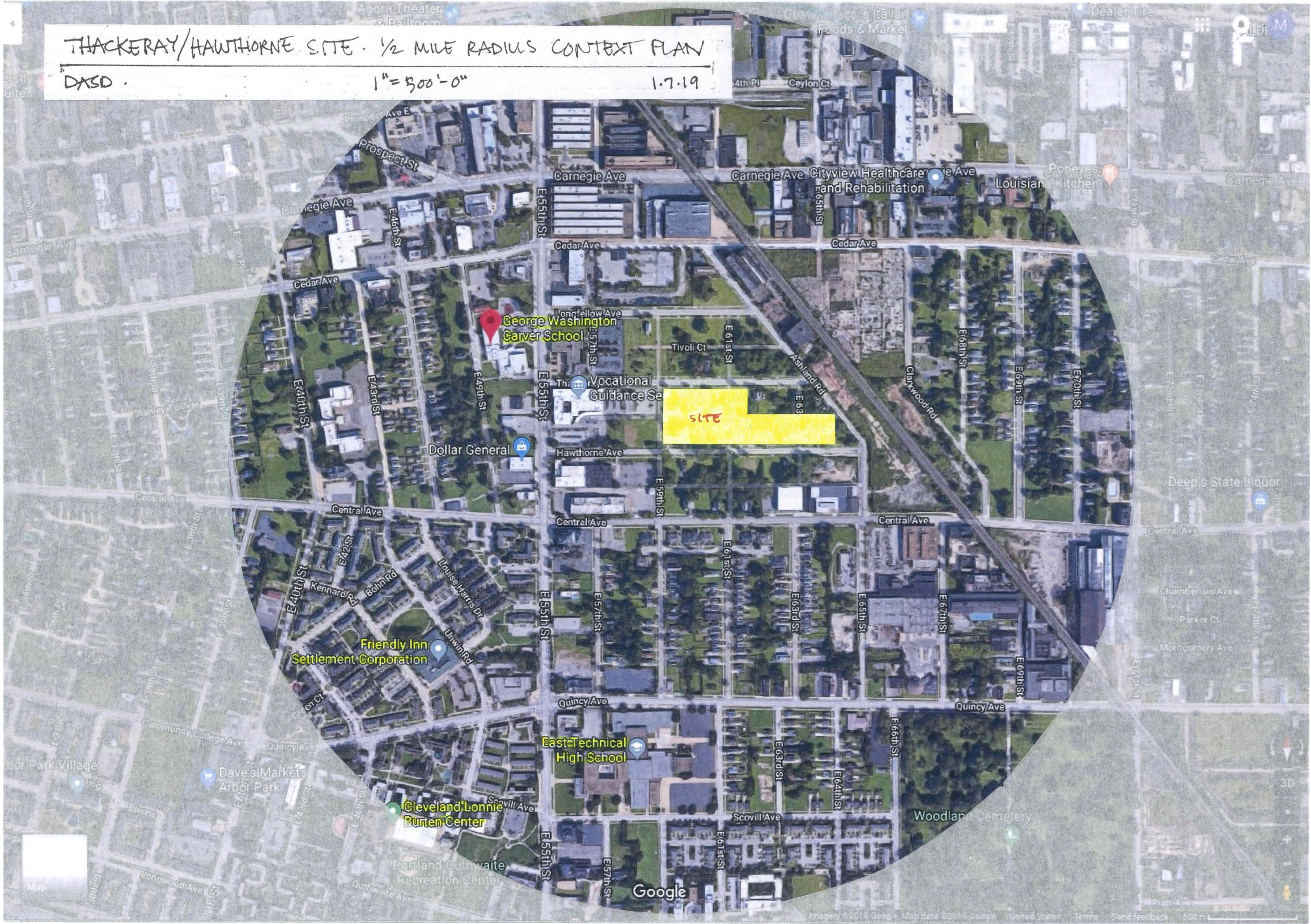




CITY OF CLEVELAND  
MAYORS OFFICE OF CAPITAL PROJECTS  
**CLEVELAND MOUNTED POLICE STABLES / COMMUNITY EQUESTRIAN CENTER**  
**ALTERNATIVE SITES STUDY**



**KIRTLAND PARK SITE: 1/2 MILE RADIUS CONTEXT PLAN**



**THACKERAY SITE: 1/2 MILE RADIUS CONTEXT PLAN**



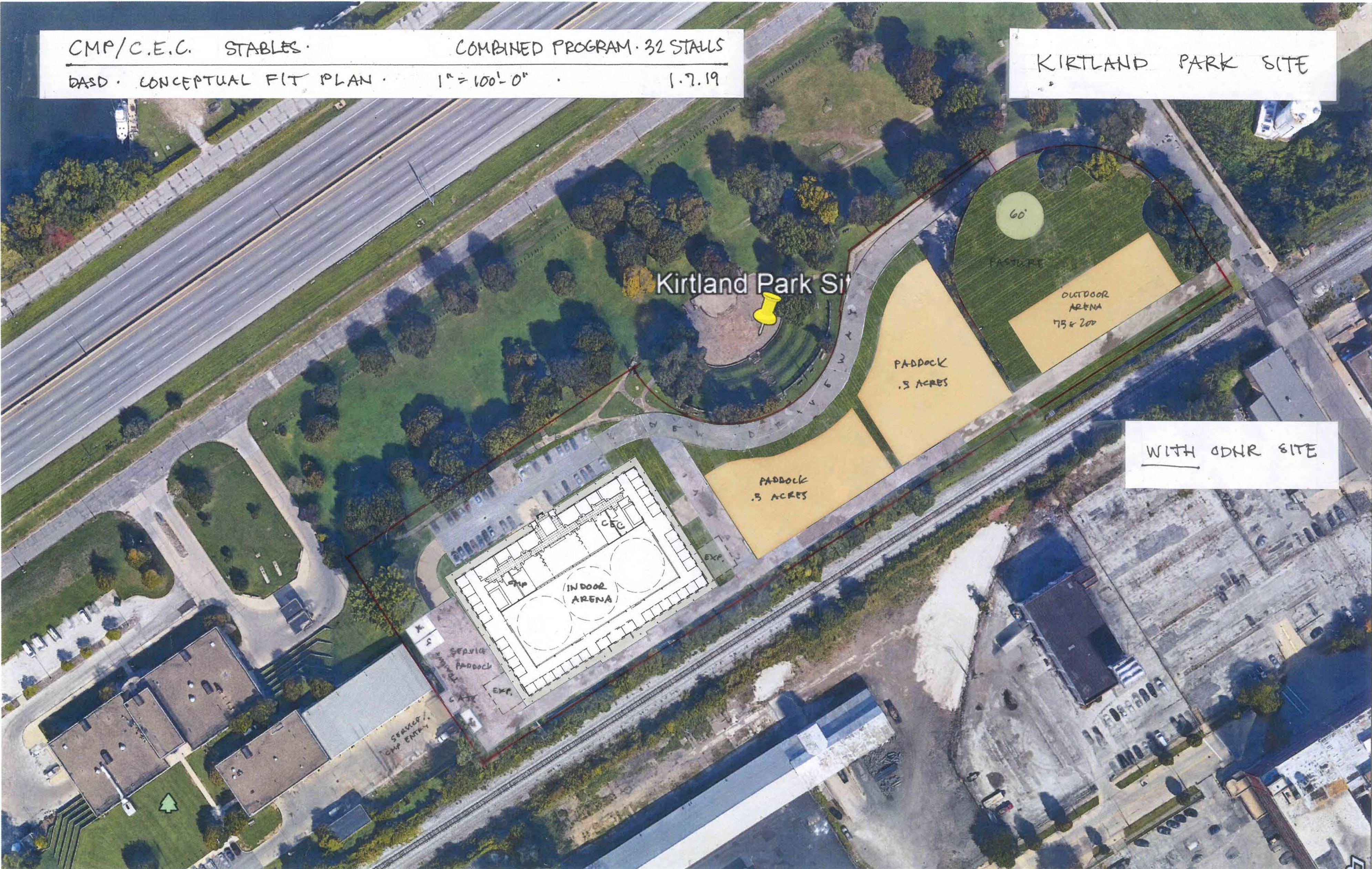


CLEVELAND MOUNTED POLICE STABLES / COMMUNITY EQUESTRIAN CENTER  
ALTERNATIVE SITES STUDY

KIRTLAND PARK SITE



KIRTLAND PARK FIT PLAN: CLEVELAND MOUNTED POLICE



KIRTLAND PARK FIT PLAN: CLEVELAND MOUNTED POLICE & COMMUNITY EQUESTRIAN CTR.





**CLEVELAND MOUNTED POLICE STABLES / COMMUNITY EQUESTRIAN CENTER**  
**ALTERNATIVE SITES STUDY**

**THACKERAY SITE**



**THACKERAY SITE FIT PLAN: CLEVELAND MOUNTED POLICE**



**THACKERAY SITE FIT PLAN: CLEVELAND MOUNTED POLICE & COMMUNITY EQUESTRIAN CTR.**





CITY OF CLEVELAND  
MAYORS OFFICE OF CAPITAL PROJECTS

CLEVELAND MOUNTED POLICE STABLES / COMMUNITY EQUESTRIAN CENTER  
ALTERNATIVE SITES STUDY

Cleveland Mounted Police New Stable Facility Site Selection			
		Site	
		Thackeray	Kirtland Park
Program	CMP + C.E.C.	Site Statistics: Acreage: 6.0 Distance: Public Square: 2.53mi.; UC: 2.61mi.; Lakefront: 3.14mi. Terrain: Flat Current Use: Vacant Ownership: City of Cleveland / Landbank	Site Statistics: Acreage: 4.8 + 1.2 ODNR area = 6.0 combined Distance: Public Square: 2.42mi.; UC: 3.86mi.; Lakefront: 2.18mi. Terrain: Embankment Current Use: City of Cleveland public park Ownership: City of Cleveland
		Overall Score: 75.39	Overall Score: 38.01
		Pros: <ul style="list-style-type: none"><li>Accommodates Combined Program</li><li>Flat, rectangular site allows efficient layout, multiple access points, open perimeter, and future expansion</li><li>Central location allows multiple ride-to routes to Downtown, UC, Neighborhoods</li><li>Riding routes through Neighborhoods enhances safety, informal CMP community interaction opportunities, and engagement mission for C.E.C.</li><li>Revitalizes/enhances safety of vacant area</li><li>Close to public transportation</li><li>Quiet area feels "sheltered"</li></ul> Cons: <ul style="list-style-type: none"><li>Large site desirable for other potential uses</li><li>Slightly longer distance to Lakefront events</li></ul> Unknowns: <ul style="list-style-type: none"><li>Future development</li><li>Enrironmental assessment</li></ul>	Pros: <ul style="list-style-type: none"><li>Location near existintg stables provides easy ride-to access to Lakefront events</li><li>Potential access to future trails</li><li>Park location provides pastoral feel</li><li>Visibility</li><li>Proximity to Lakefront</li></ul> Cons: <ul style="list-style-type: none"><li>ODNR-leased area required to accommodate Combined program; adds \$1.5 million + to cost</li><li>Hilly, constricted site limits layout options and future expansion</li><li>Isolated and inaccessible by public transit</li><li>Removes park land from public access &amp; special events</li><li>Continuous noise from Shoreway traffic</li><li>Longer riding distances to UC and Neighborhoods</li><li>Riding routes limit informal CMP community interaction opportunities and engagement mission for C.E.C.</li><li>Eliminates public parking at Kirtland Park</li></ul> Unknowns: <ul style="list-style-type: none"><li>Enrironmental assessment</li></ul>
		Estimated Costs: \$ 9,262,030.00	Estimated Costs: \$ 11,419,454.00
Program	CMP Only	Overall Score: 70.00	Overall Score: 52.84
		Pros: <ul style="list-style-type: none"><li>Easily ccommodates CMP-Only Program</li><li>Flat, rectangular site allows efficient layout, multiple access points, open perimeter, and future expansion</li><li>Central location allows multiple ride-to routes to Downtown, UC, and Neighborhoods</li><li>Riding routes through Neighborhoods enhances safety and informal CMP community interaction opportunities</li><li>Revitalizes/enhances safety of vacant area</li><li>Quiet area feels "sheltered"</li></ul> Cons: <ul style="list-style-type: none"><li>Large site desirable for other potential uses</li><li>Limited access to potential future trails</li><li>Slightly longer distance to Lakefront events</li></ul> Unknowns: <ul style="list-style-type: none"><li>Future development</li><li>Enrironmental assessment</li></ul>	Pros: <ul style="list-style-type: none"><li>Accommodates CMP-Only Program</li><li>Location near existing stables provides easy access to lakefront events</li><li>Potential access to future trails</li><li>Park location provides pastoral feel</li></ul> Cons: <ul style="list-style-type: none"><li>Hilly, constricted and irregular site limits layout options and future expansion</li><li>Removes park land from public access</li><li>Continuous noise from Shoreway traffic</li><li>Exposure to lakefront winter weather</li><li>Longer riding distances to UC and Neighborhoods</li><li>Riding routes limit informal CMP community interaction opportunities</li><li>Eliminates public parking at Kirtland Park</li></ul> Unknowns: <ul style="list-style-type: none"><li>Stability of existing slopes</li><li>Environmental assessment</li></ul>
		Estimated Costs: \$ 6,247,983.00	Estimated Costs: \$ 6,629,999.00