

# City of Cleveland and Cleveland Metropolitan School District

## BACKGROUND Land Swap Legislation Wards 4, 7, & 10

(rev. 1/28/19)

# LAND TRANSFER COMPONENTS

Group 1: Buckeye-Woodland Neighborhood – Ward 4

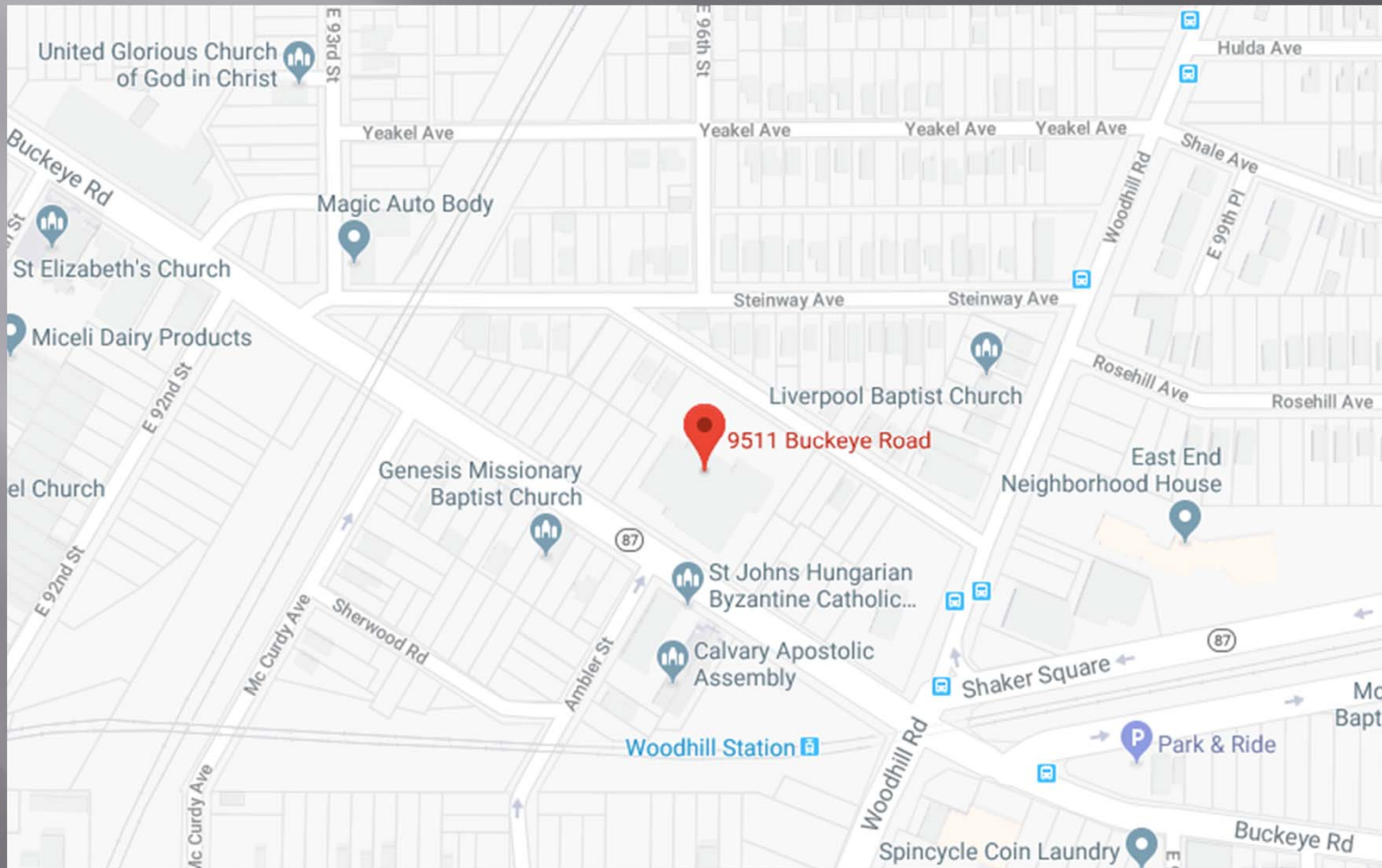
Group 2: Hough Neighborhood/Wade Park School – Ward 7  
Hough Neighborhood/Daniel Morgan School – Ward 7

Group 3: Glenville/Forest Hills Neighborhood – Ward 10

# Group 1 – Buckeye-Woodland Neighborhood – Ward 4

**E. 116<sup>th</sup> Street Transit-Oriented Development  
(TOD) Opportunity**

**Buckeye-Woodland School**  
9511 Buckeye Road 44104  
(vacant building on site)



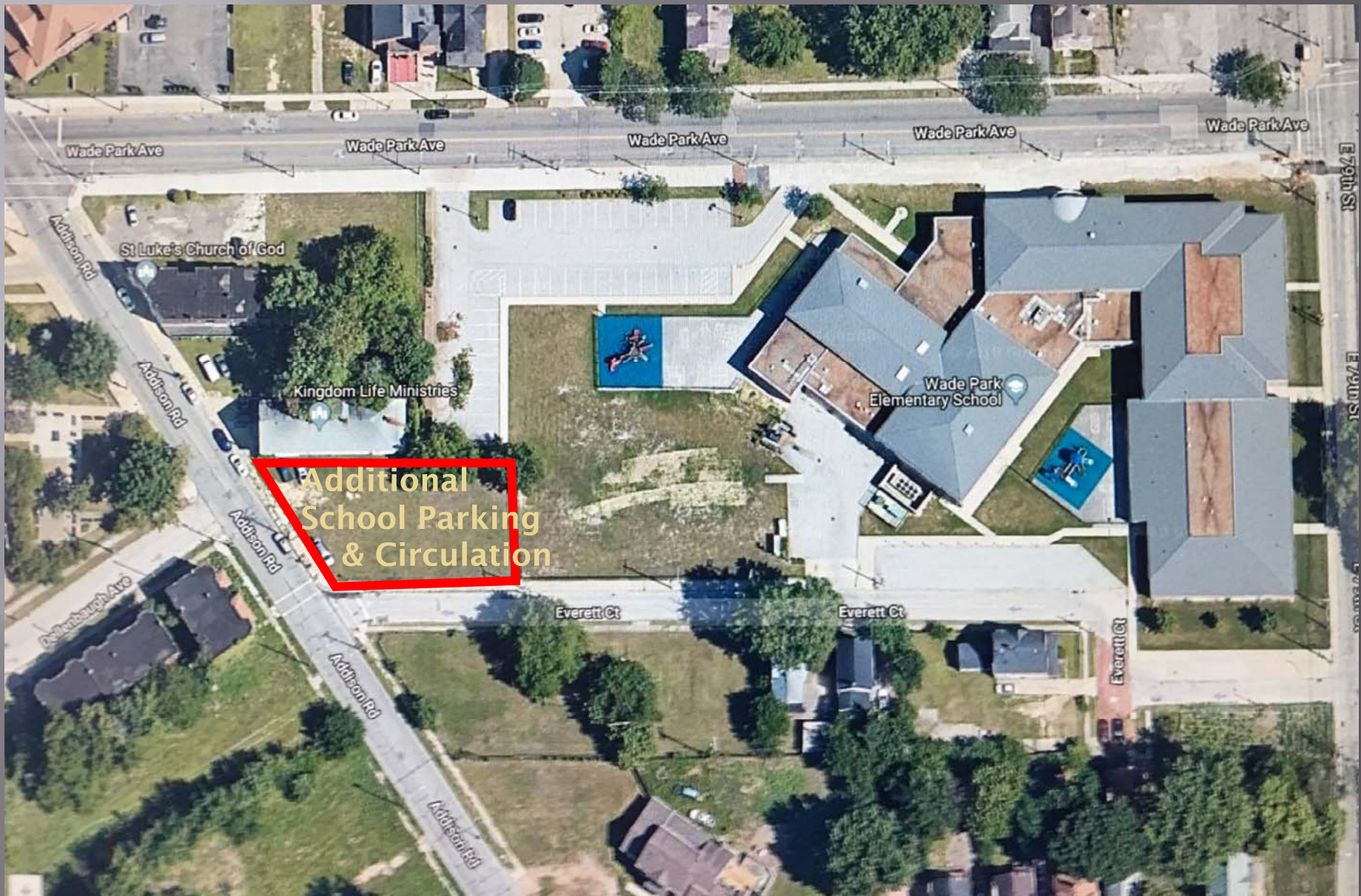
## Transfer of Former Buckeye-Woodland School Site to City for TOD Opportunity





# Group 2 – Hough Neighborhood –Ward 7

1481 Addison Road (PPN106-18-007/LB) at Wade Park Elementary School





# Group 2 – Hough Neighborhood – Ward 7

Portion of PPN 107-15-008 at Daniel E. Morgan School (8912 Morris Ave.)

Transfer from CMSD's Daniel E. Morgan Elementary School site  
for Levin Group, Inc's LIHTC project site assembly

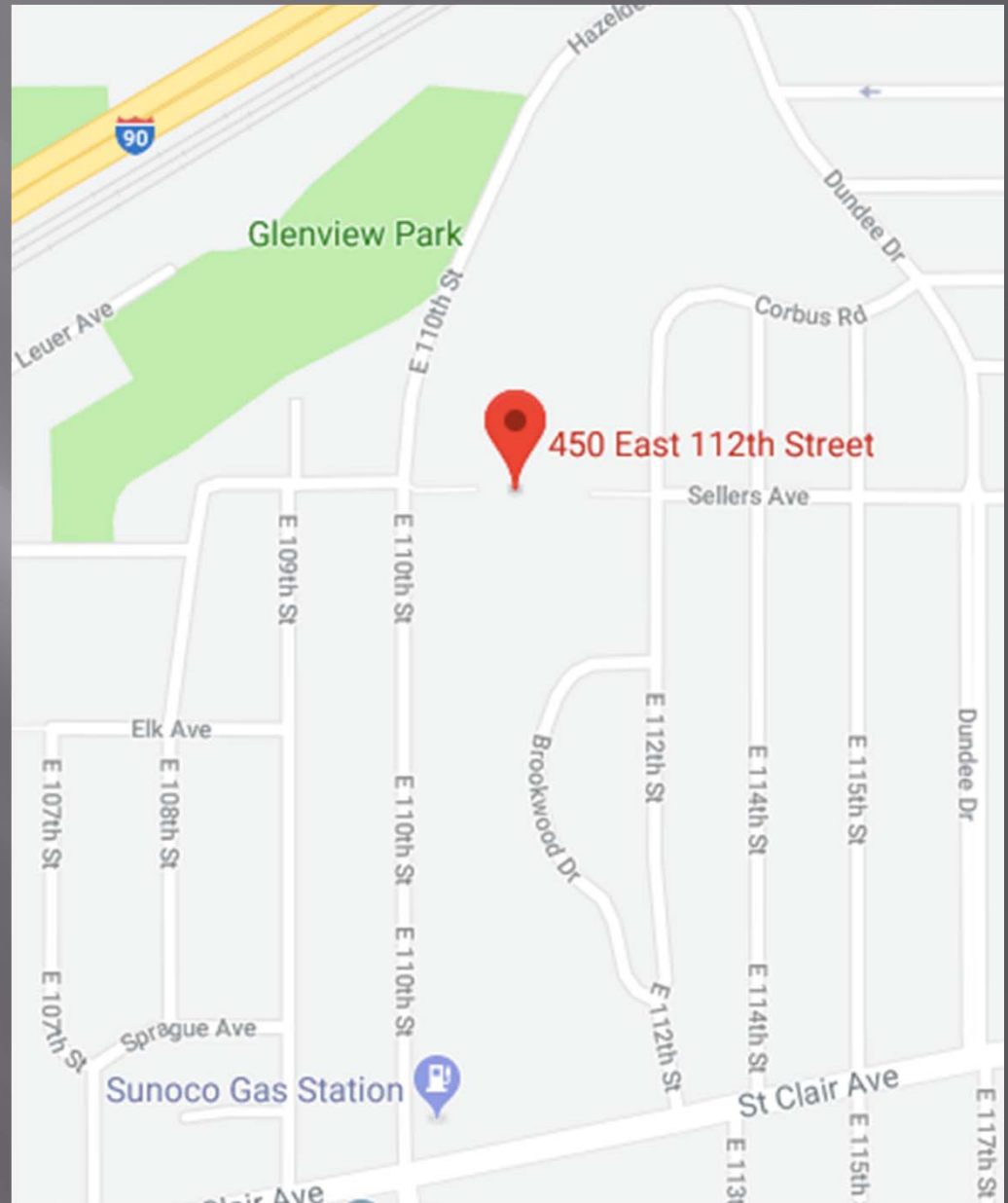


LIHTC Project Site Parcels

# Group 3 Glenville/ Forest Hills Neighborhood Ward 10

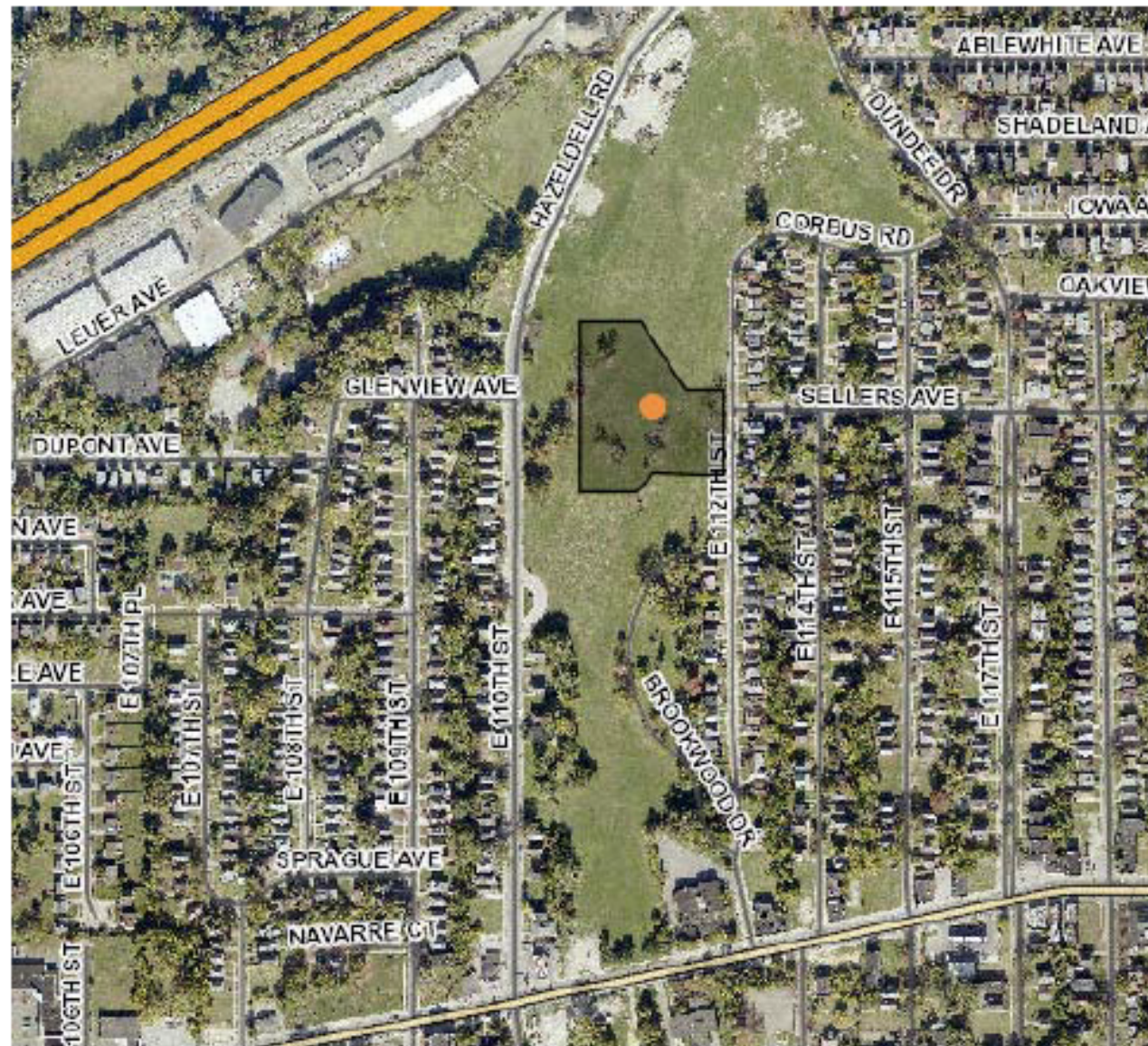
## Park Improvement Project

Former (vacant)  
Forest Hill Parkway School Site  
450 E. 112th Street 44108





## Transfer of CMSD's former Forest Hill Parkway School site to City For new Forest Hills Park improvements





# Group 3 – Glenville/ Forest Hills Neighborhood Ward 10

## Forest Hills Park Conceptual Plan overlaid with the Glenville Master Plan

At the former (vacant)  
Forest Hill Parkway School Site  
450 E. 112th Street 44108

