

Longfellow & E. 140th Street Rezoning

Darley Ave & E 140th St



cleveland
city planning
commission

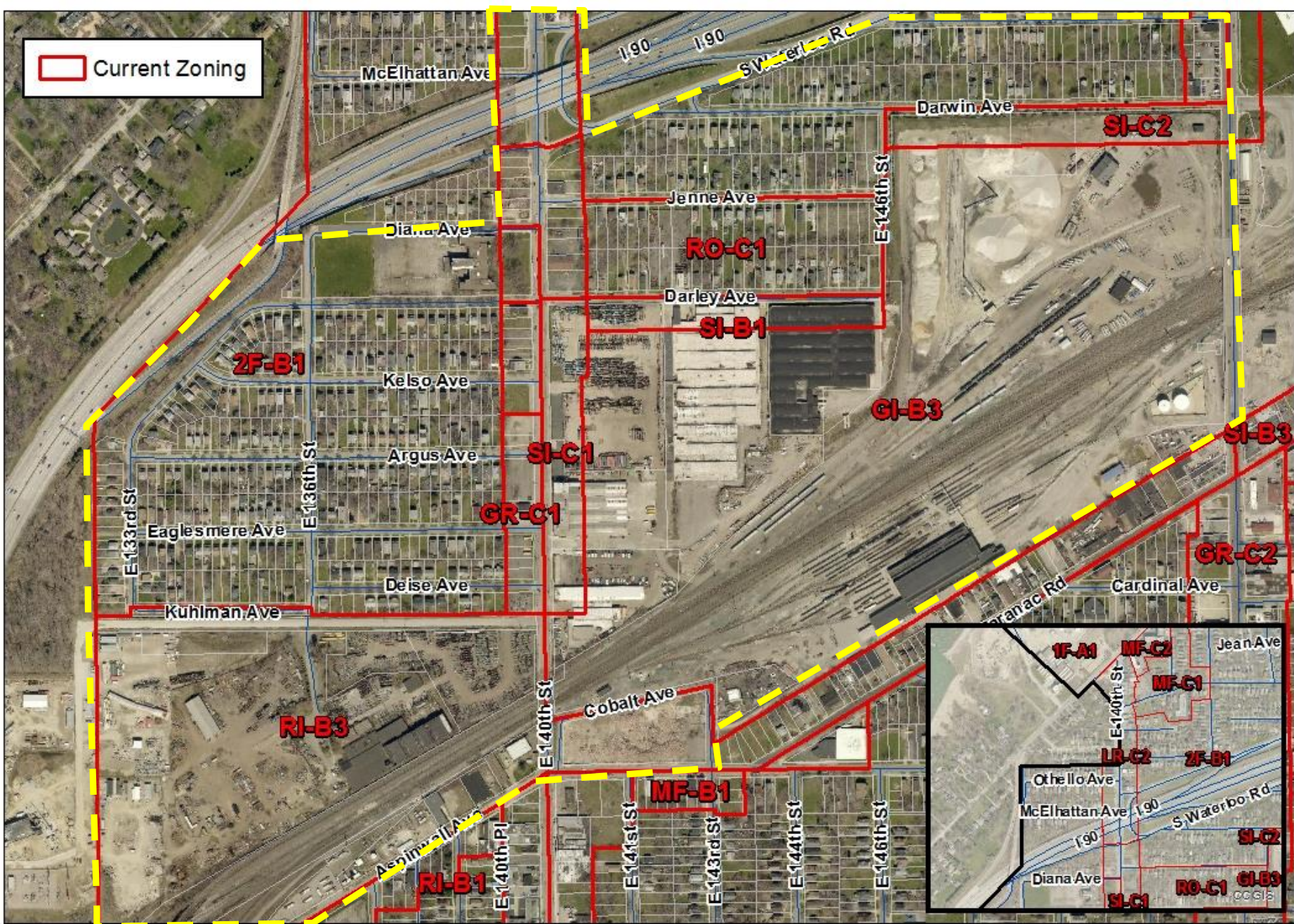


Proposal

Changing the Use, Area & Height Districts of parcels of land along East 140th Street south of Lakeshore Boulevard to Aspinwall Avenue.

Purpose

- Rezone the large block of parcels between Diana & Darley Avenue, East of 140th Street at site of former CMSD Henry Longfellow School to MF-D2 for proposed Senior Housing Development.
- Rezone areas along E. 140th to consolidate the hodgepodge of zoning districts
- To be more consistent with the Citywide 2020 Plan to diversify housing and use types
- To create more dense, walkable and equitable neighborhoods



Current Zoning

Date: 01/7/2019

Cleveland City Planning Commission

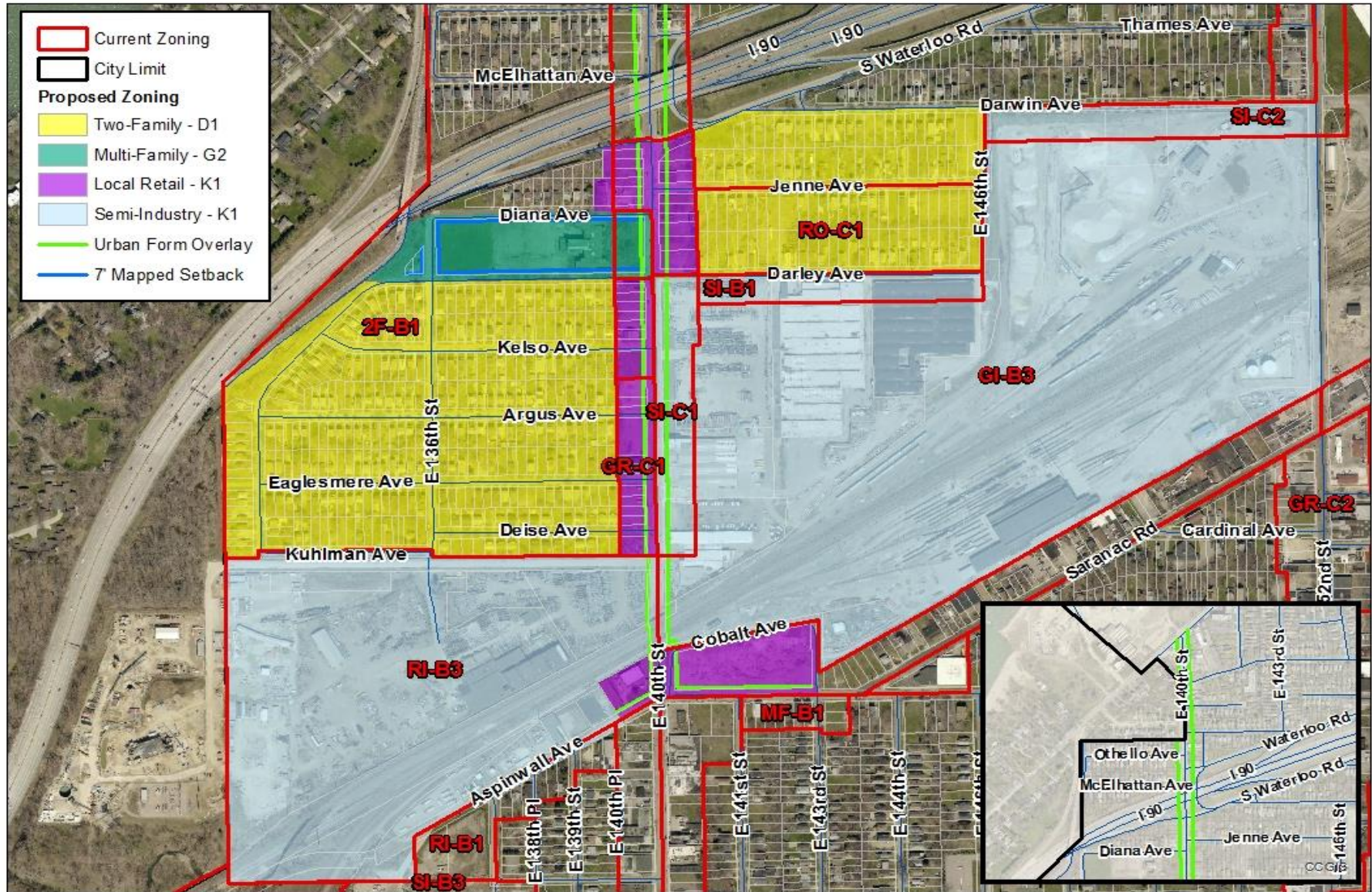
331 Lakeside Ave, Cleveland, OH 44114



0 250 500 Feet



Neighborhood Rezoning Proposal



Map Change # 2595

Date: 01/7/2019

Cleveland City Planning Commission

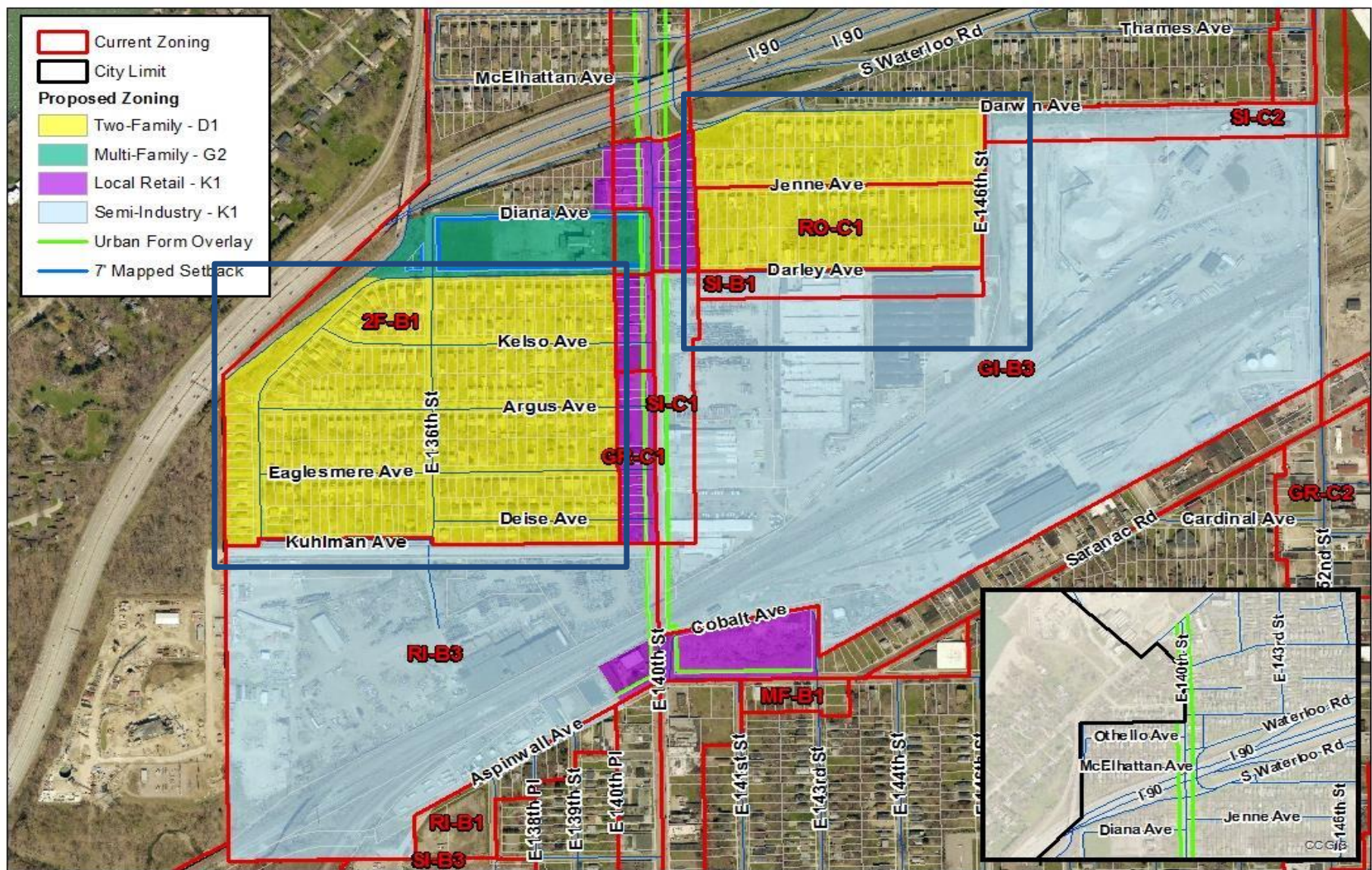
631 Lakeside Ave, Cleveland, OH 44114



0 250 500 Feet



Two-Family - D1 (2F)



Map Change # 2595

Date: 01/7/2019

Cleveland City Planning Commission

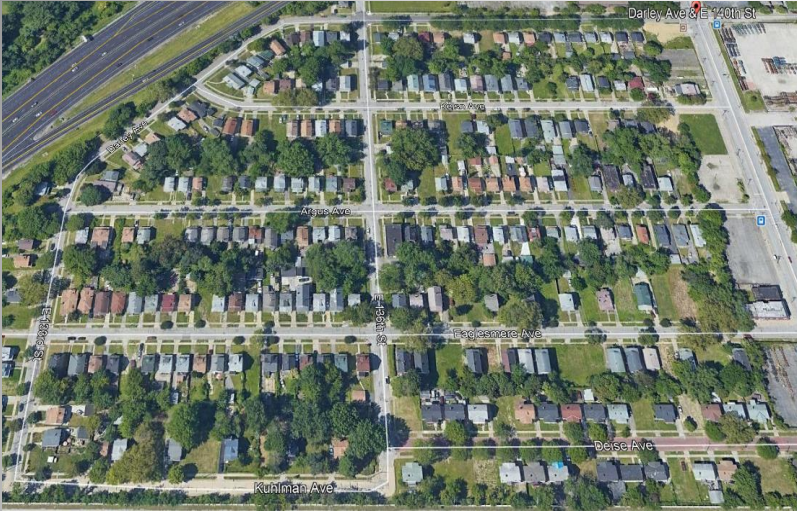
831 Lakeside Ave., Cleveland, OH 44114



0 250 500 Feet



Two-Family – D1 (2F)



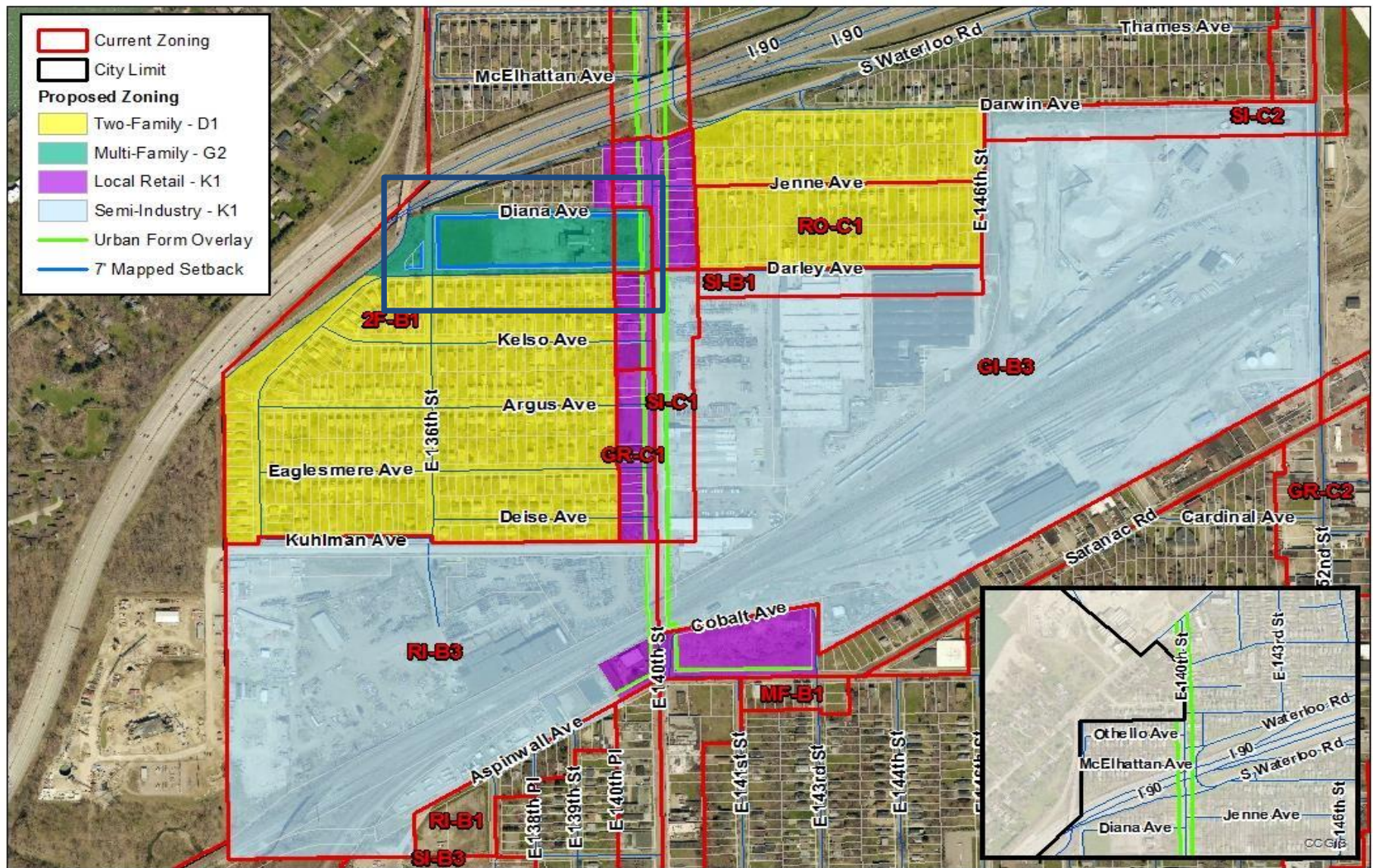
Western Side of E. 14th
Longfellow School



Eastern Side of E. 140th, Jenne Block



Multi-Family Residential – G2 (MF)



Map Change # 2595

Date: 01/7/2019

Cleveland City Planning Commission

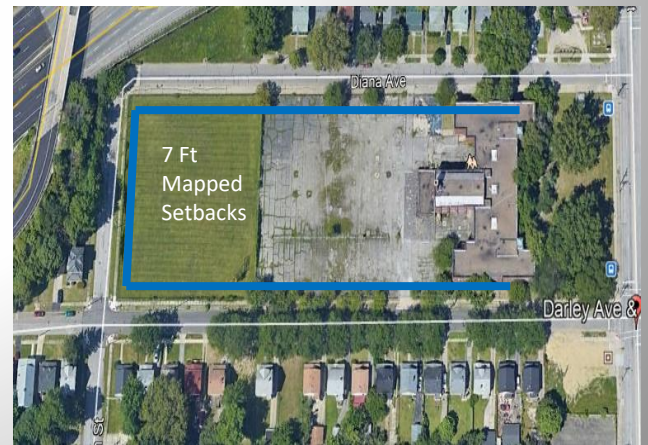
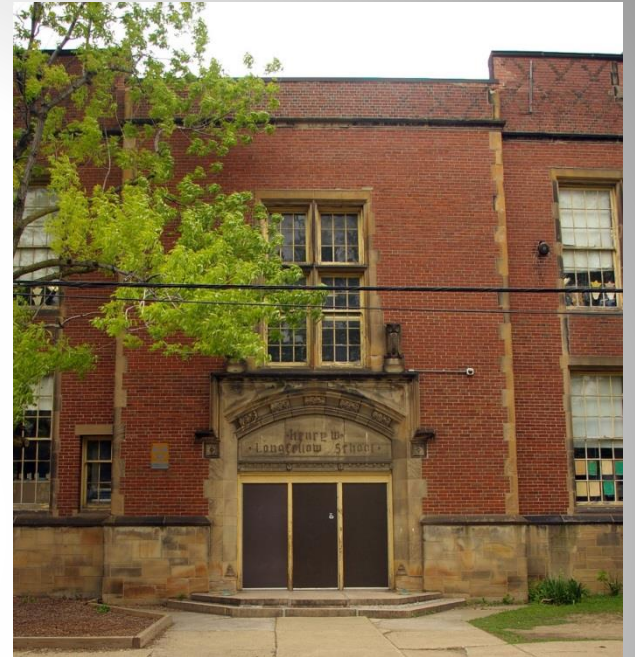
631 Lakeside Ave., Cleveland, OH 44114



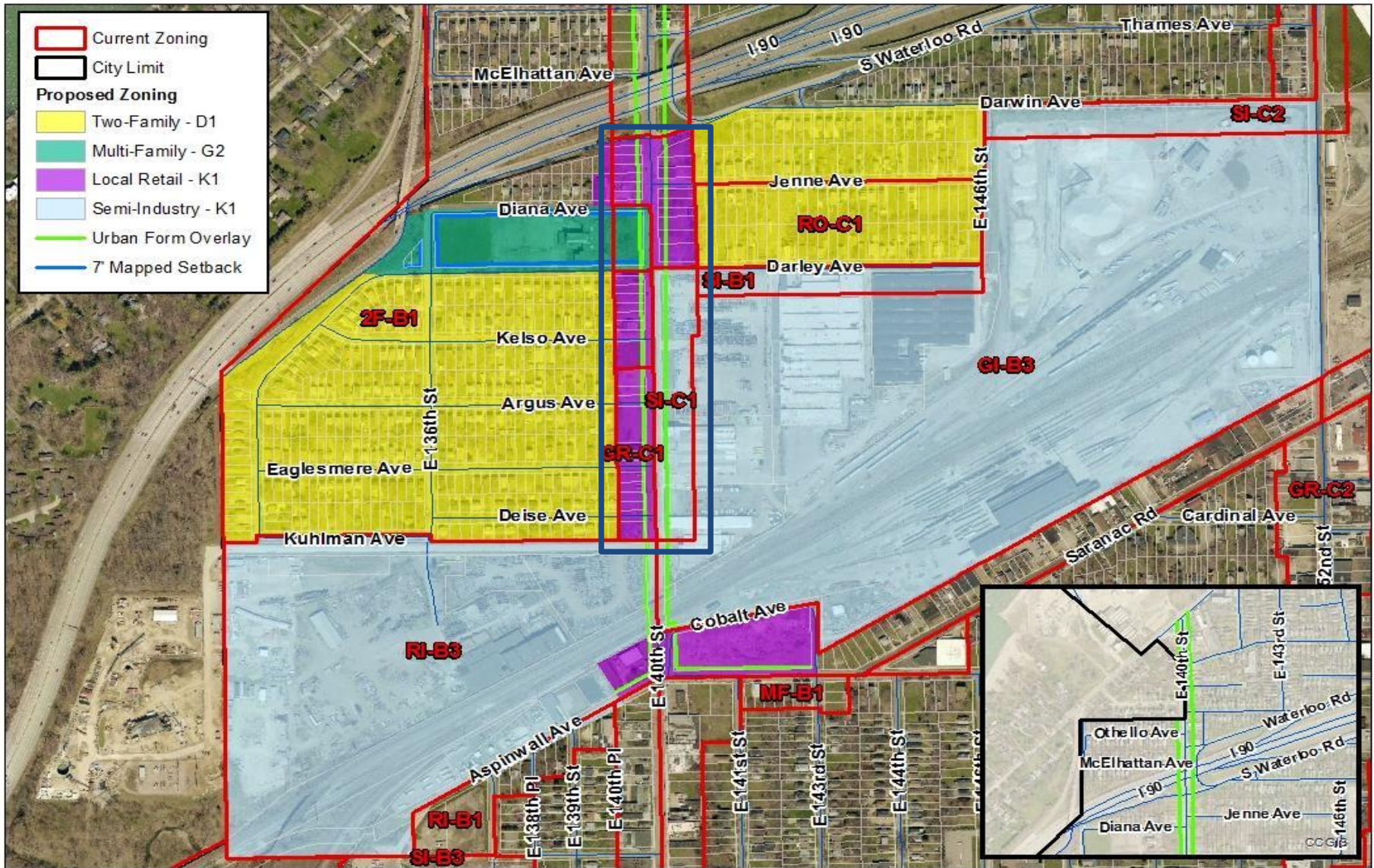
0 250 500 Feet



Longfellow Site – MF G2



Local Retail & Urban Form Overlay (LR/UFO)



Map Change # 2595

Date: 01/7/2019

Cleveland City Planning Commission

831 Lakeside Ave. Cleveland, OH 44114



0 250 500 Feet





Looking north along E. 140th Street



Looking south along E. 140th Street (north of hwy)

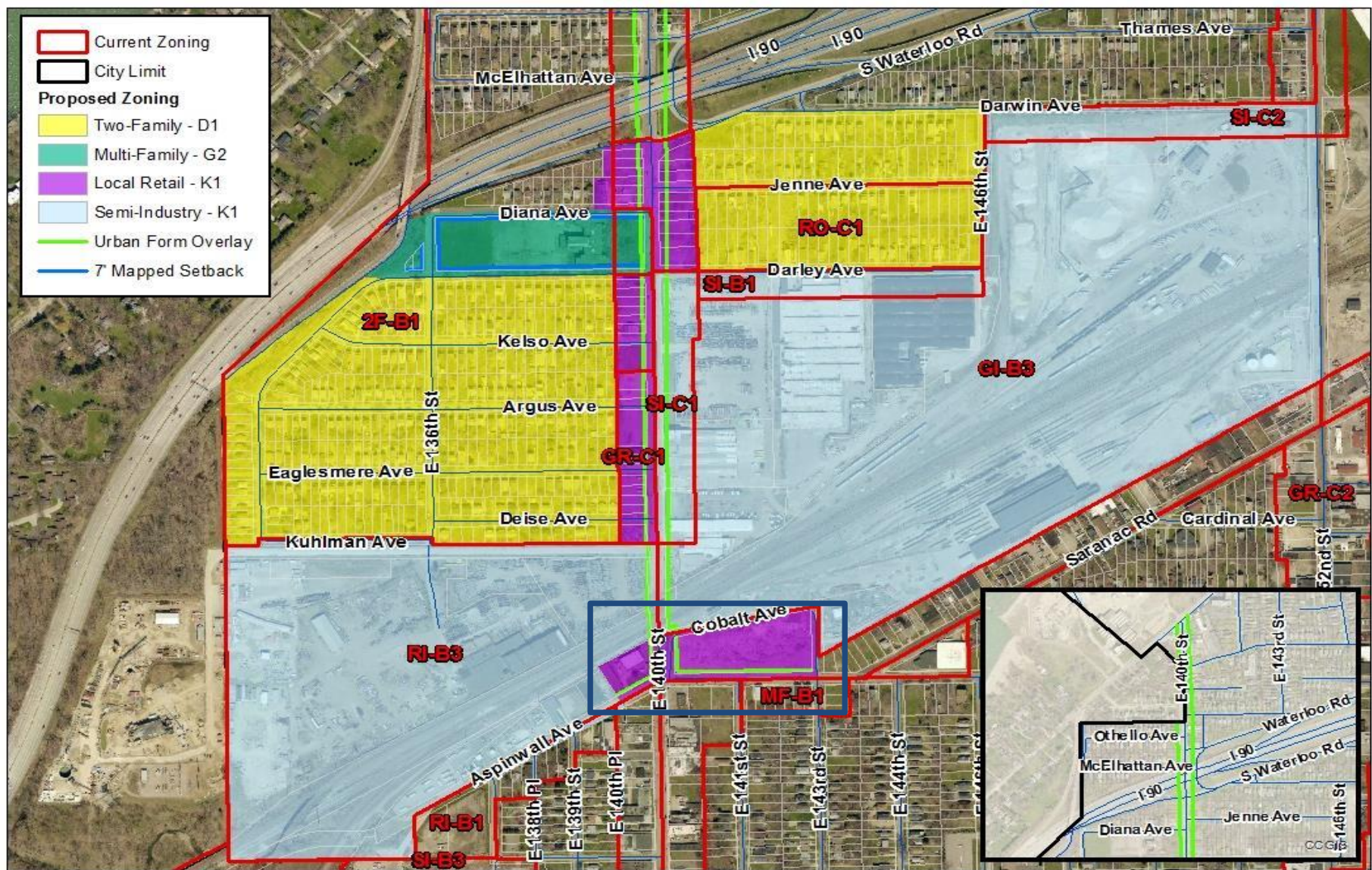


Looking north along E. 140th Street



Looking south along E. 140th Street (north of hwy)

Local Retail & Urban Form Overlay (LR/UFO)



Map Change # 2595

Date: 01/7/2019

Cleveland City Planning Commission

631 Lakeside Ave., Cleveland, OH 44114



0 250 500 Feet



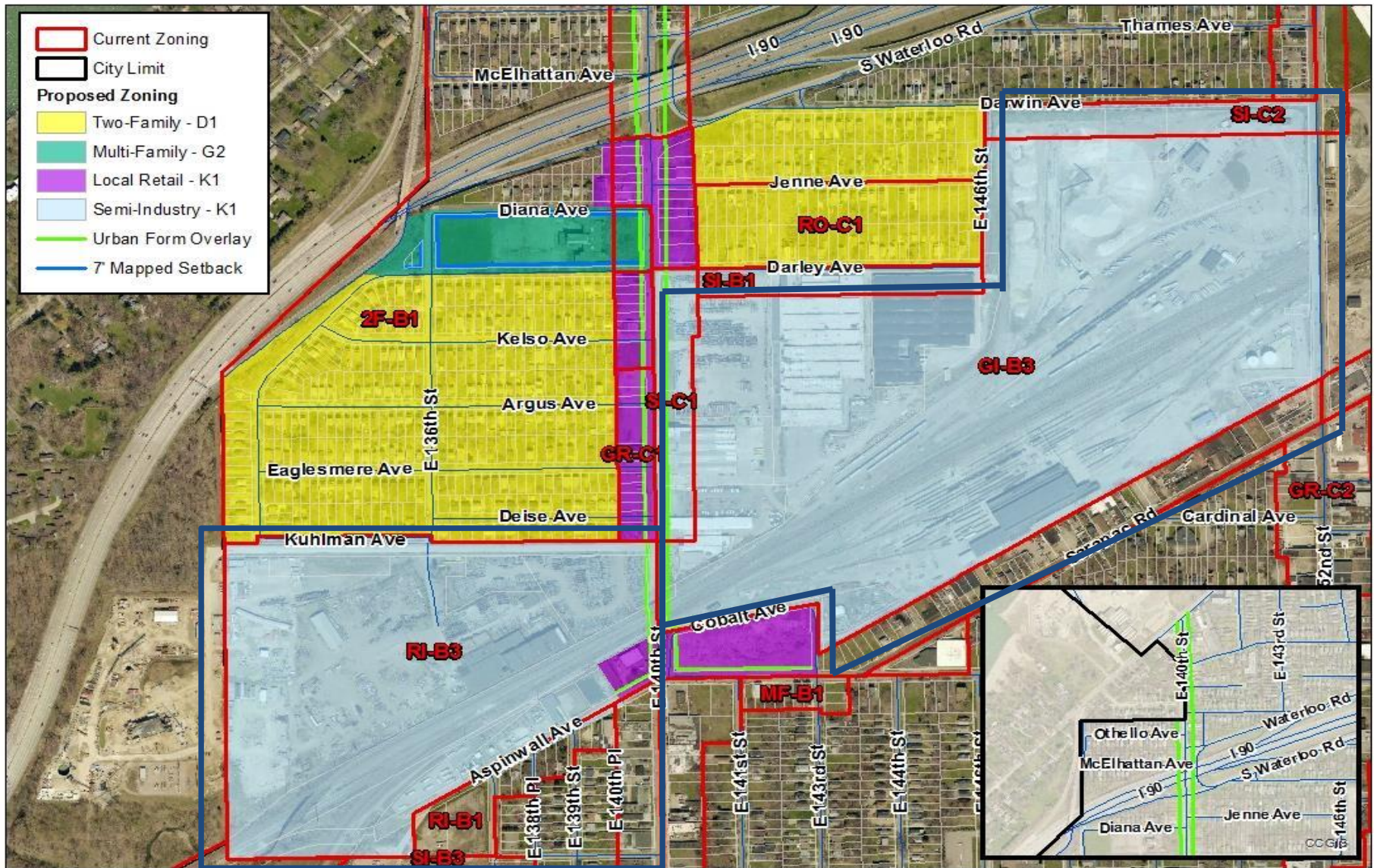


North Eastern corner of Aspinwall at E. 140th Street



North Western corner of Aspinwall at E. 140th Street

Semi-Industry – K1 (SI)



Map Change # 2595

Date: 01/7/2019

Cleveland City Planning Commission

831 Lakeside Ave., Cleveland, OH 44114



0 250 500 Feet

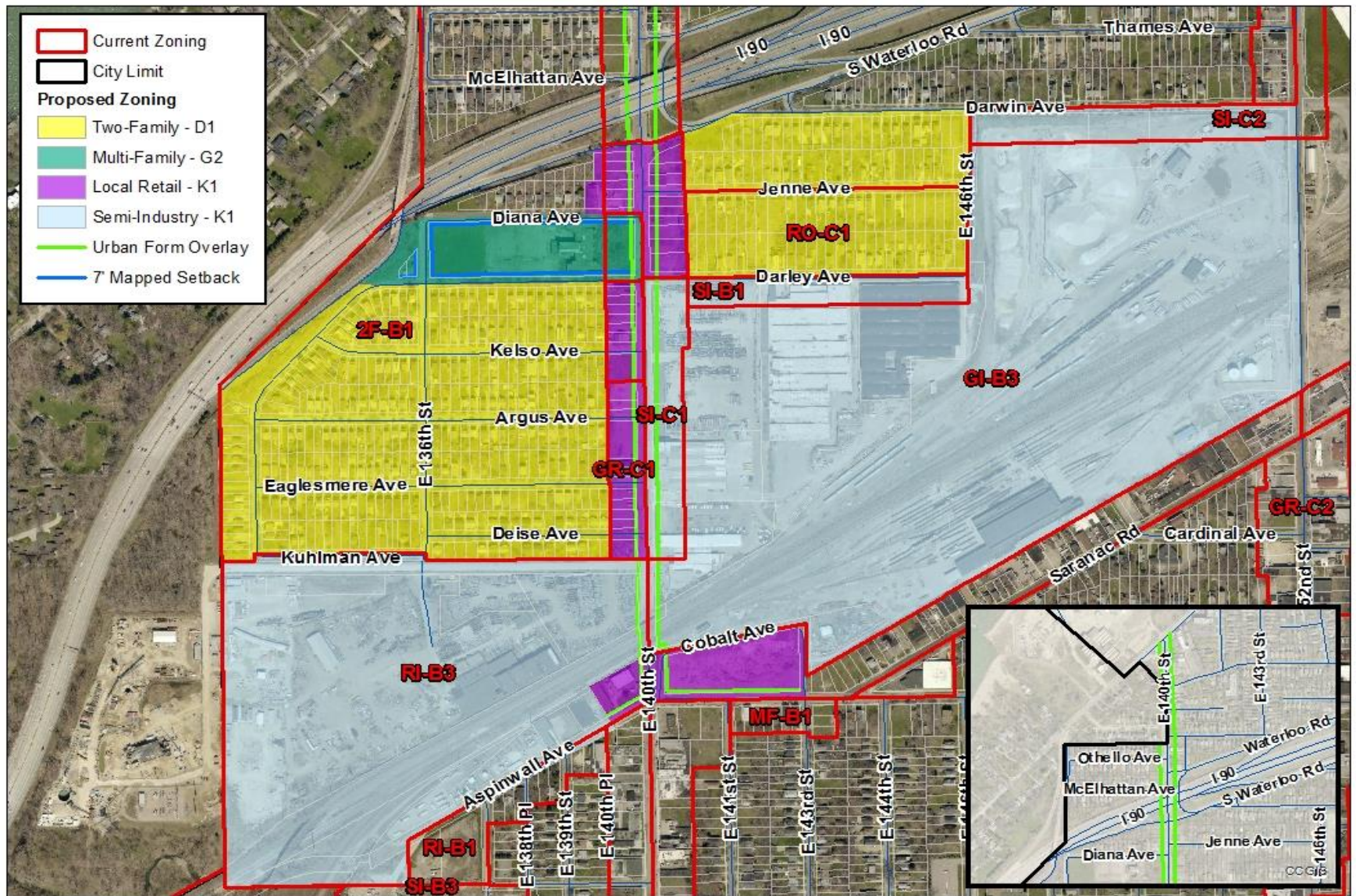


Western Side
of E. 140th



Eastern
Side of E.
140th

Neighborhood Rezoning Proposal



Map Change # 2595

Date: 01/7/2019

Cleveland City Planning Commission

631 Lakeside Ave. Cleveland, OH 44114



0 250 500 Feet

