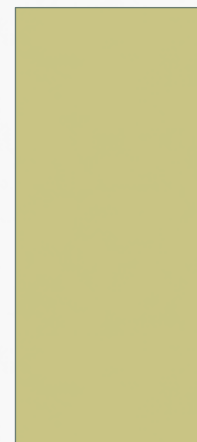


CLEVELAND LANDMARK NOMINATION

MORRIS A. BRADLEY CARRIAGE HOUSE
(AKA JOHN F. PUSKAS ENAMELS STUDIO)
1980 EAST 73RD STREET



MORRIS A. BRADLEY

1859-1926

Went to work for his father Alva Bradley's shipping company (125 ship fleet)

Took over the company upon his father's death in 1885

His father had also amassed a large real estate empire in Cleveland

President of the Cleveland & Buffalo Transportation Company

President of the United Sated Coal Company

Owner of the Bradley Electrical Company





STEAMER CITY OF
CLEVELAND



BRADLEY BLOCK
WAREHOUSE DISTRICT

City of Cleveland. He was responsible for the erection of the following buildings:

Bolivar Road	1904-1909-1911	Alva	1904
Fountain	1902	Bolton	1902
Lillis	1907	Charles	1913
Stone	1899	Erie	1903
Euclid-E. 73rd		Fishel	1911
Coal Pit		Morris	1890
Vulcan Plant	1896	Mott	1901
Middle St. Plant		Murphy	1919
Academy	1907	New Ellington	1898
Noble	1900	Penn	1898
Ontario	1905	Vulcan	1895
Pitt	1898	Watson	1907
Pyra	1896	Bradley	1884
Seneca	1906	High	1893
Underner	1905	Florence	1889
Ajax	1897	Willson	1898
Hall & Du	1897	Brown	1911
Clark	1907	Manix	1913
Ellington	1892	McLoo	1897
Akers	1909	Columbia	1908
Mason	1916	Card	1899
Medina	1896	Marine	1893
Marion	1911		

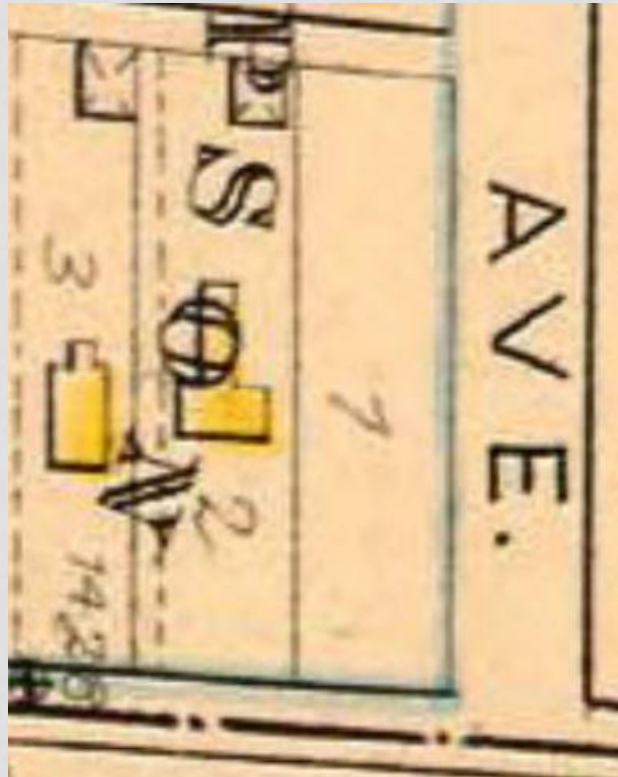


MORRIS A. BRADLEY HOUSE

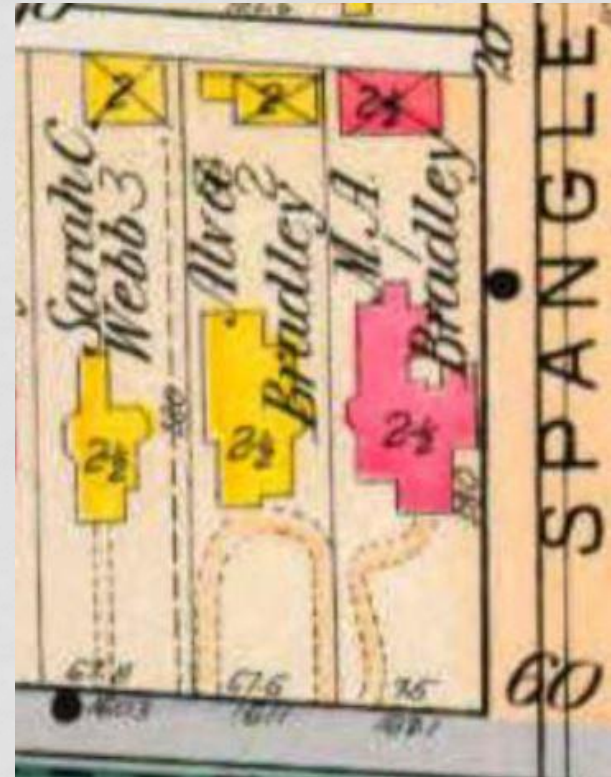
CLEVELAND PLAIN DEALER, MARCH 27, 1887 –
"MRS. CAPTAIN BRADLEY HAS TAKEN
POSSESSION OF THE NEW HOME AT THE
CORNER OF EUCLID AND SPANGLER AVENUES."

HISTORICAL MAPS

1881



1896



MORRIS A. BRADLEY HOUSE

1907 – Major renovations to add porches and change to the Tudor Revival style

1921 – Morris moved to Shaker Heights and then it became a rooming house

After Morris' death in 1926 the property remained in the family with his son Alva.

The property remained in the family until 1946 when it was sold to Ben Freeble



DAS DEUTESCHES HAUS, exclusive beer club at Euclid Avenue and E. 72d Street, and meeting place of prominent city and county officials, yesterday was raided by federal prohibition agents. The vine-covered home formerly was the Alva Bradley home. In January, 1928, it was the scene of three murders and a suicide.

MORRIS A. BRADLEY HOUSE



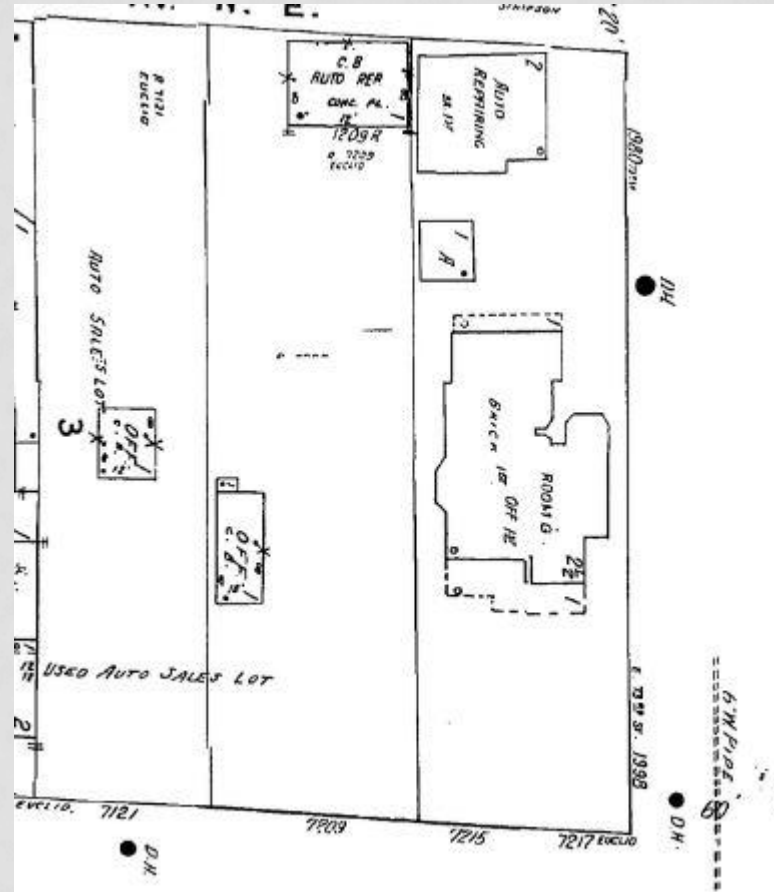
NEIGHBORHOOD CHANGES

By 1951 the two houses next door had been removed and turned into a used car lot.

The carriage house was converted to an auto shop as early as 1931 but by the mid 1950's there were other businesses also occupying the building.

These included a Wood and plaster shop on the second floor and an enamel studio on the third.

The house was still a boarding house known as Beth-Ben's Hall and had an office for the used car lot on the 1st floor.



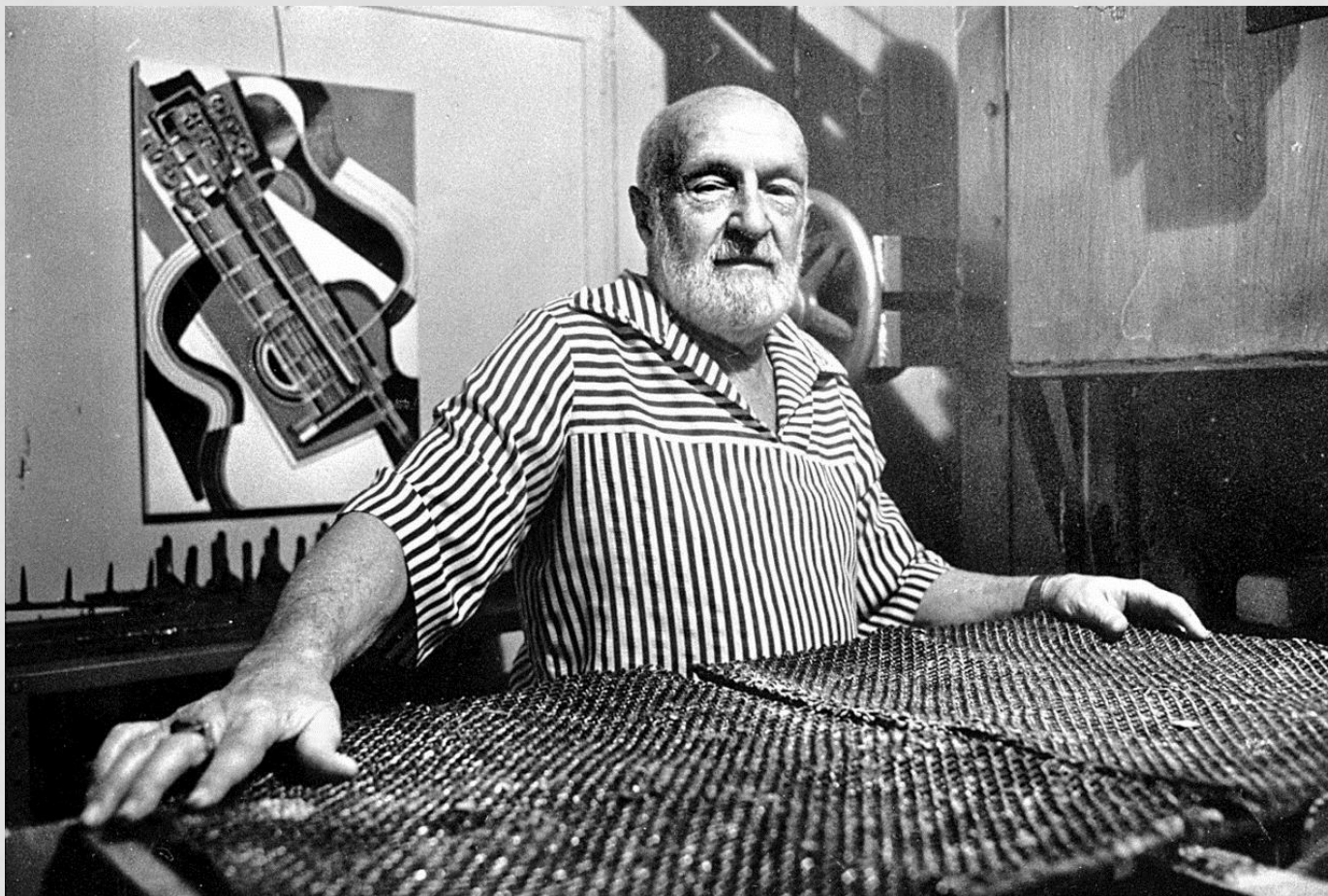
BRADLEY CARRIAGE HOUSE



BRADLEY CARRIAGE HOUSE



JOHN F. PUSKAS



Courtesy of Cleveland Plain Dealer Archives

JOHN F. PUSKAS



JOHN F. PUSKAS



Free Form Dish, 1956; Cleveland Museum of Art

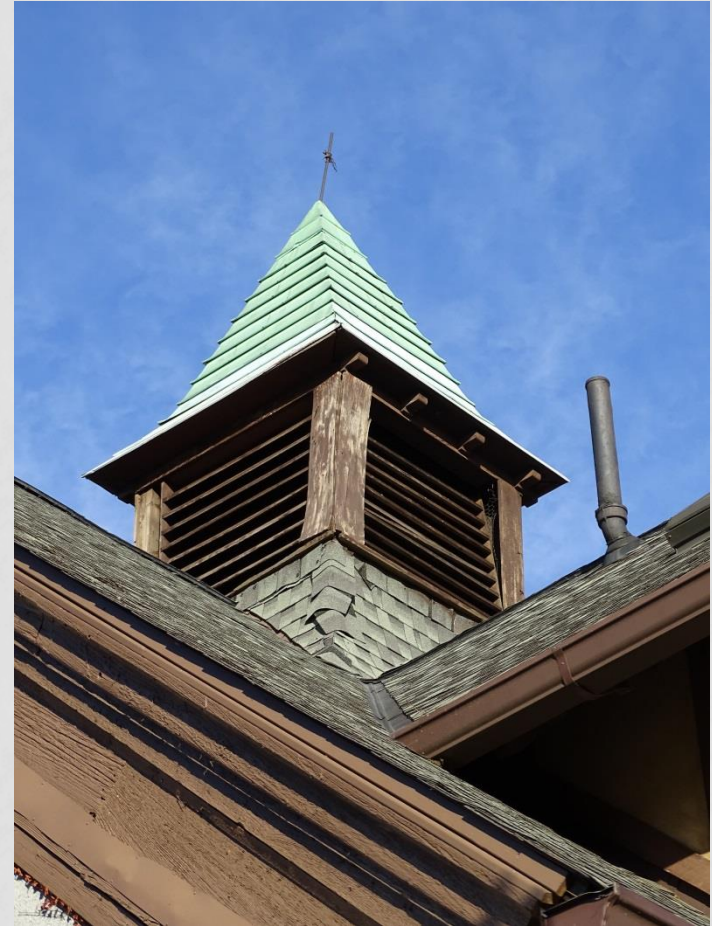
BRADLEY CARRIAGE HOUSE



BRADLEY CARRIAGE HOUSE



BRADLEY CARRIAGE HOUSE



BRADLEY CARRIAGE HOUSE



BRADLEY CARRIAGE HOUSE



MORRIS A. BRADLEY
CARRIAGE HOUSE

THANK YOU