
Map Change 2677

Development, Planning &
Sustainability

September  24, 2024

CITY OF CLEVELAND
Mayor Justin M. Bibb

CITY PLANNING COMMISSION

Proposal

Changing the Use, Area & Height Districts of parcels of land north and south of Lorain Avenue between West 150th Street and the Norfolk Southern Railroad and extending the Pedestrian Retail & Urban Form Overlay Districts.

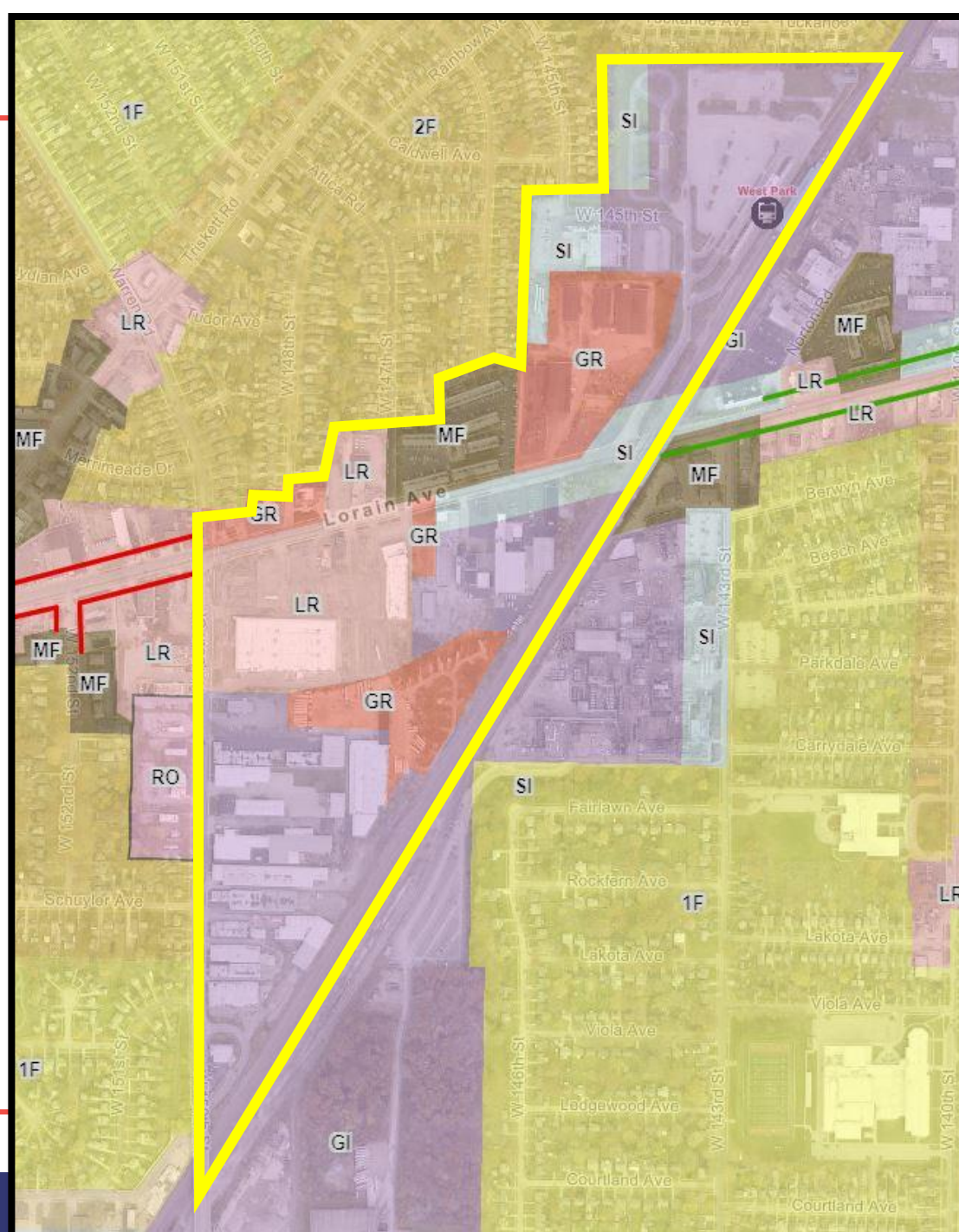
(Map Change 2677)

Purpose

- To allow the development of TOD Affordable Housing on RTA Parcels.
 - To promote a variety of housing typologies.
 - To remove the legacy industrial zoning designations.
 - To consolidate the hodgepodge of zoning districts to be more compatible with nearby residential neighborhoods and to become more walkable.
-

Map Change 2677

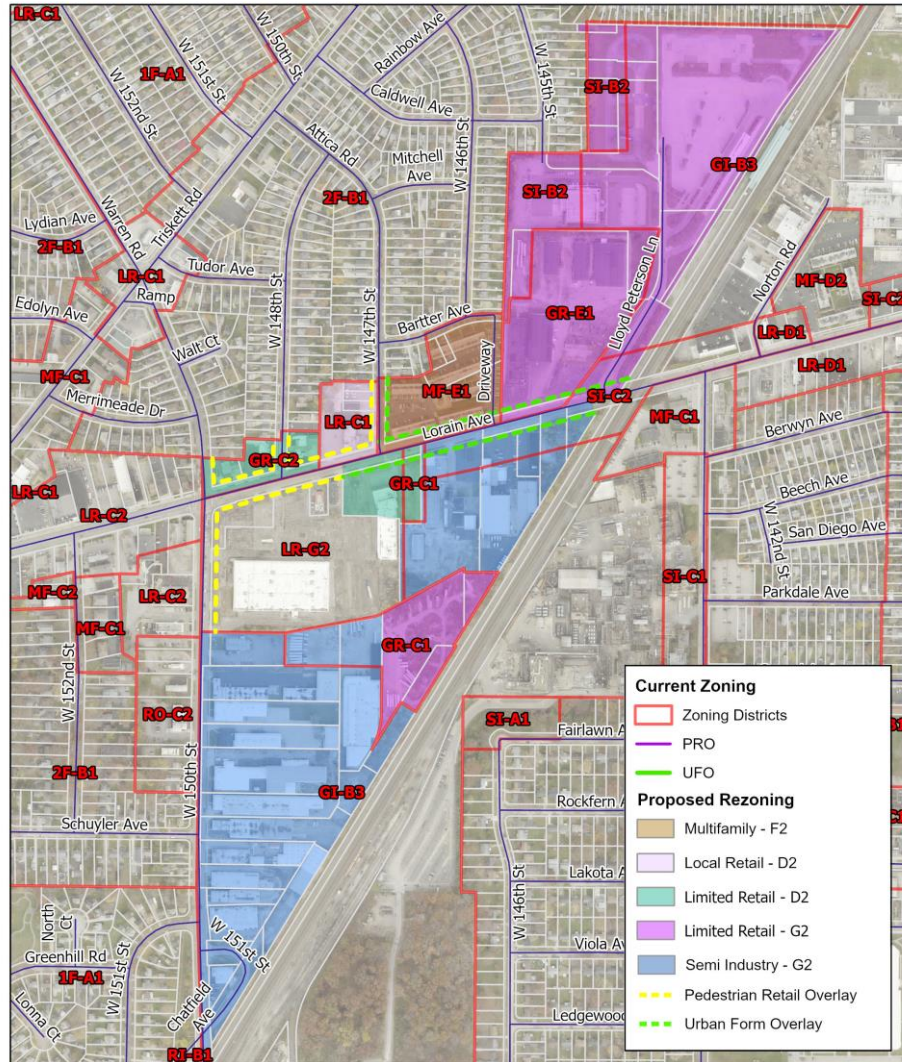
Existing Zoning



Current

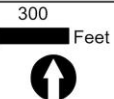


Map Change 2677



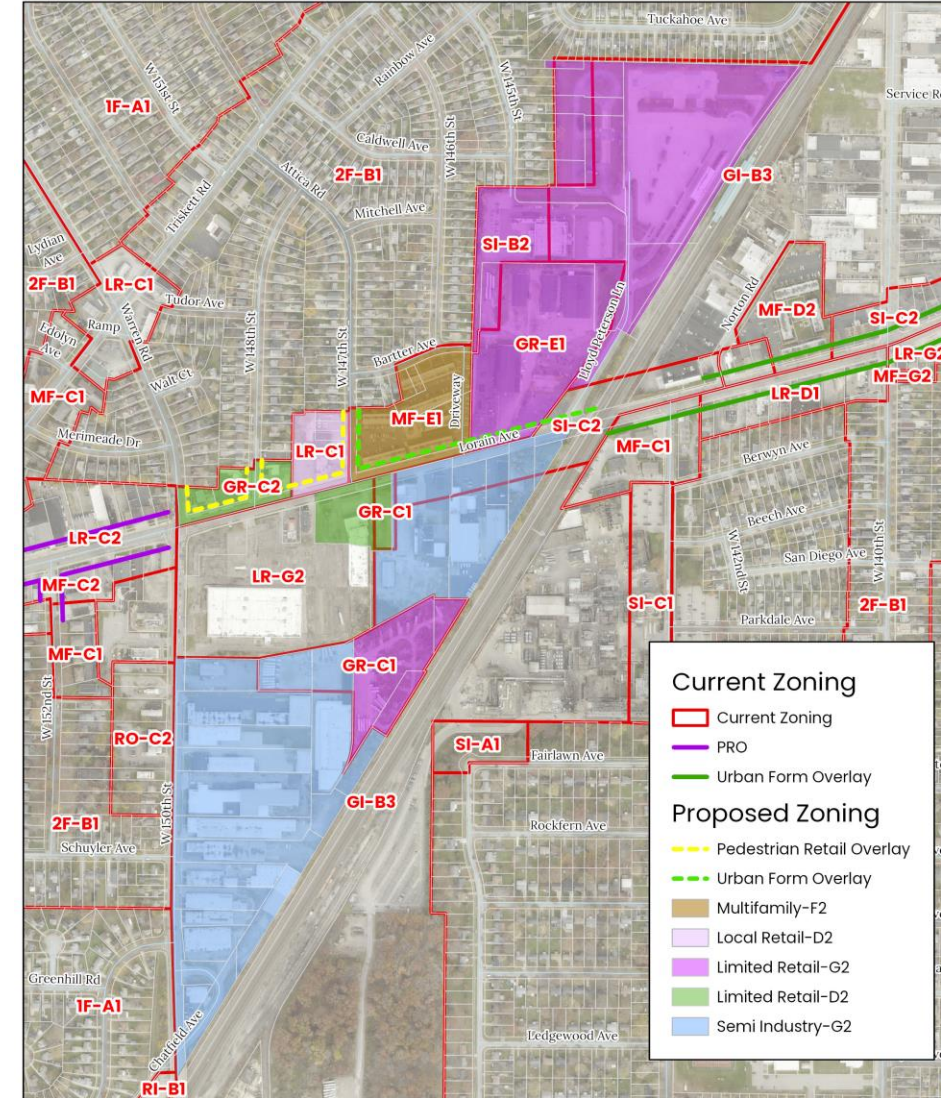
Map Change 2630

Changing the Use, Area & Height Districts of parcels of land north and south of Lorain Avenue between West 150th Street and the Norfolk Southern Railroad and extending the Pedestrian Retail & Urban Form Overlay Districts.



January 9, 2023

- Revised to remove Pedestrian Retail Overlay & Urban Form Overlay from the south side of Lorain Ave.



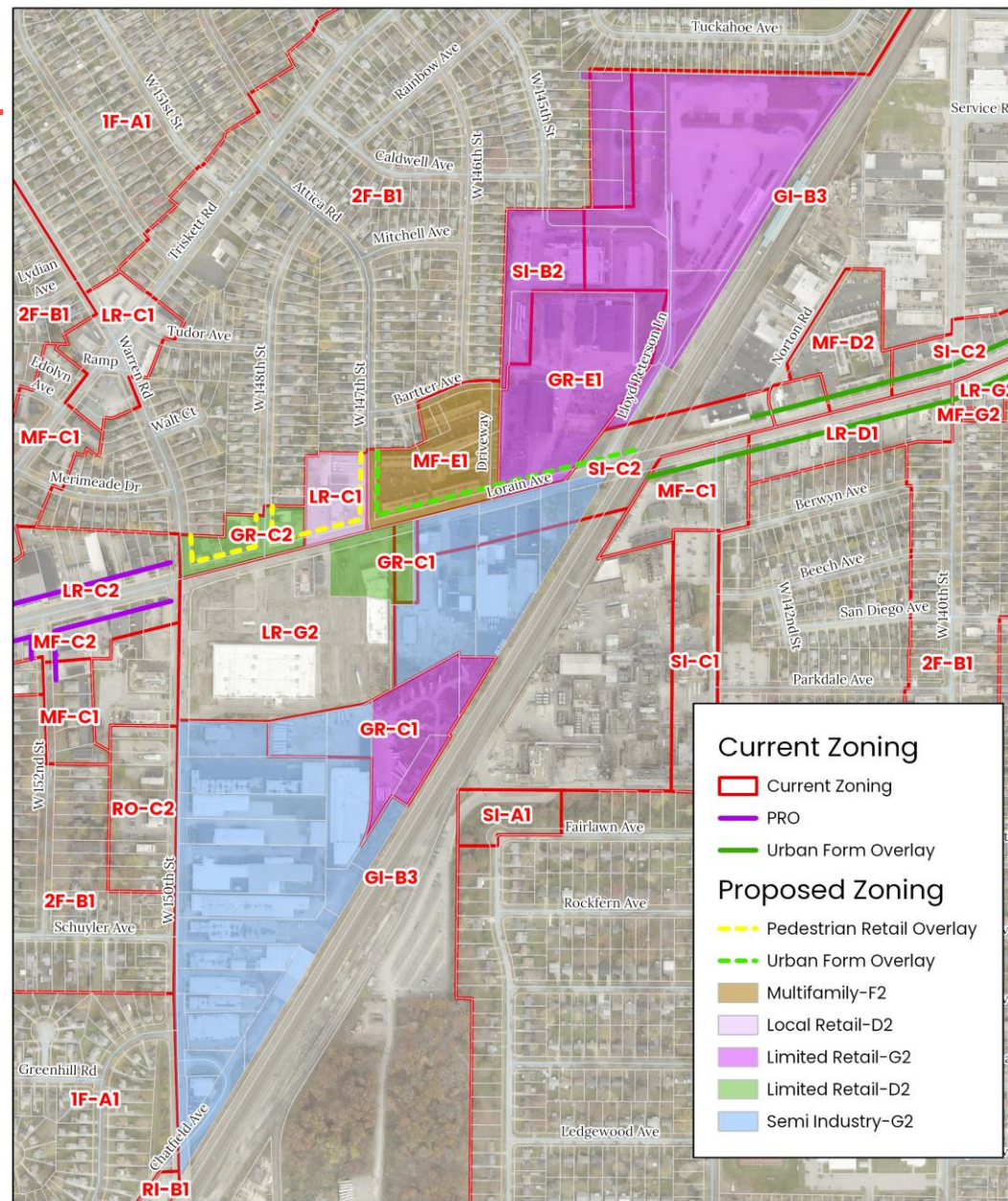
Map Change 2677

Changing the Use, Area & Height Districts of parcels of land north and south of Lorain Avenue between West 140th Street and the Norfolk Southern Railroad and extending the Pedestrian Retail & Urban Form Overlay Districts.



March 25, 2024

Map Change 2677



Map Change 2677

Changing the Use, Area & Height Districts of parcels of land north and south of Lorain Avenue between West 140th Street and the Norfolk Southern Railroad and extending the Pedestrian Retail & Urban Form Overlay Districts.

