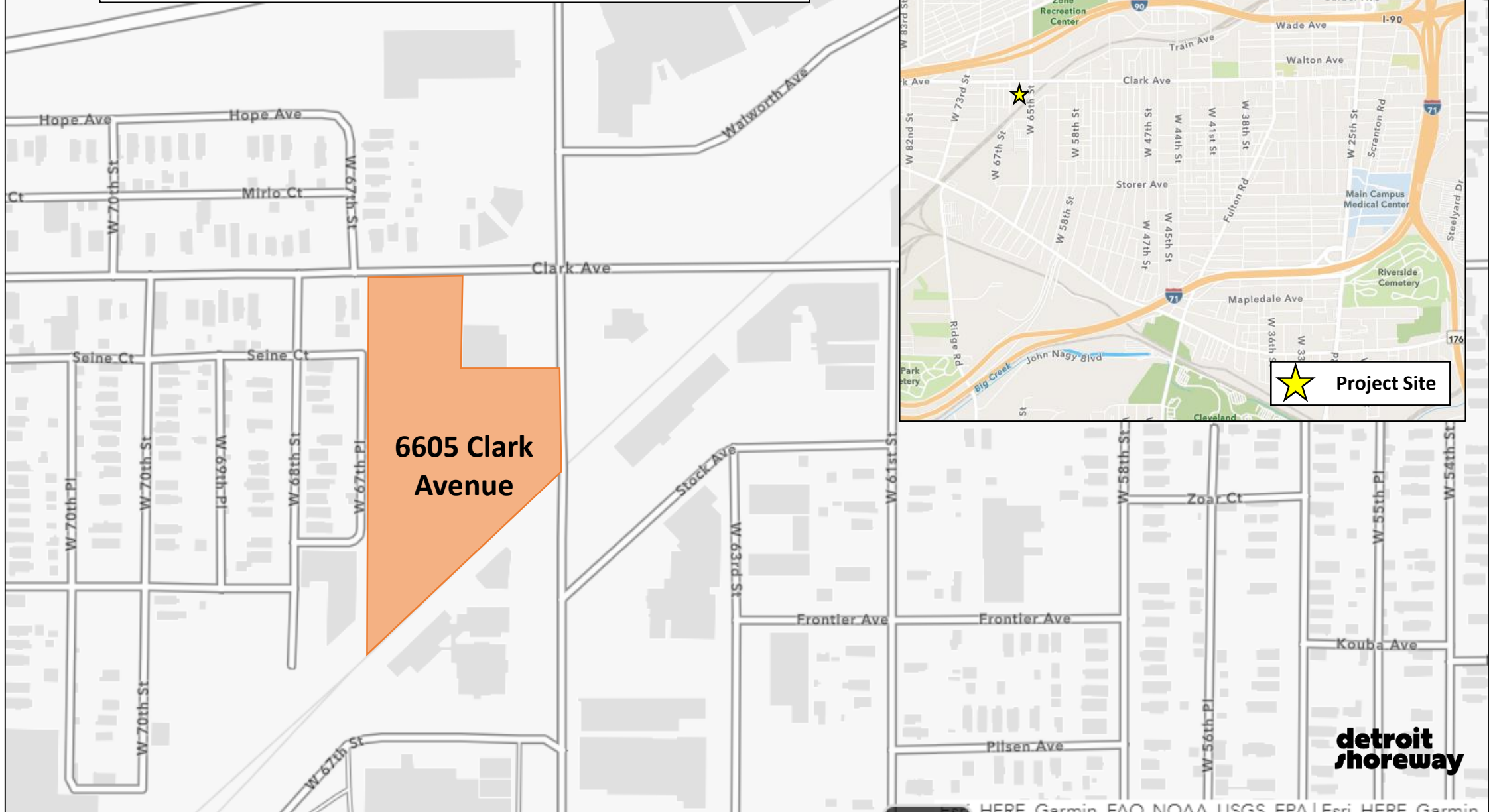


Pilsener Brewing Company Bottling-Works Building

**detroit
shoreway**

Pilsener Brewing Company Bottling-Works Building: Site Location



6605 Clark Avenue

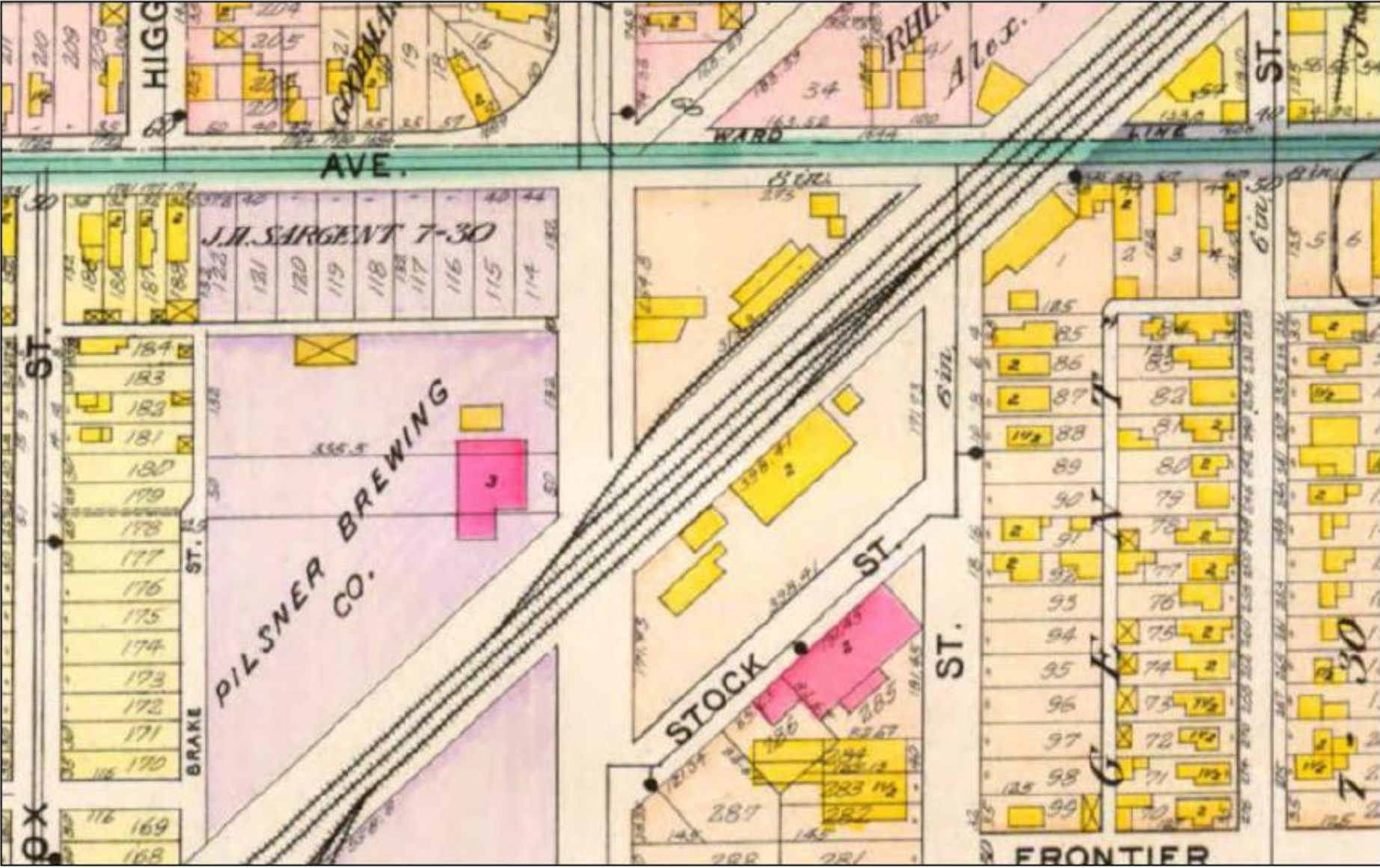
★ Project Site

**detroit
shoreway**

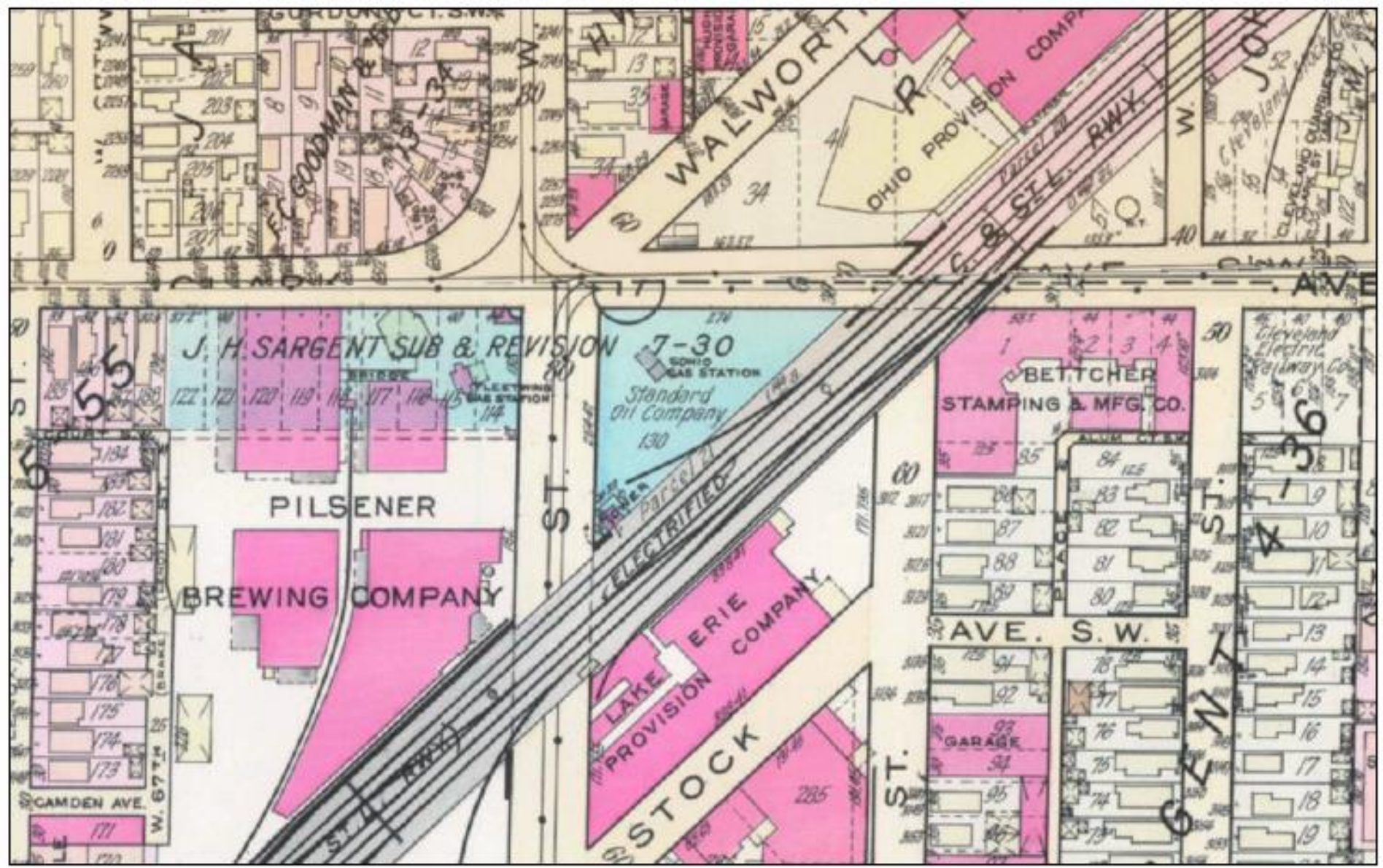
Pilsener Brewing Company: Bottling-Works Building



1898 Sanborn Map



1930-1940 Sanborn Map



History of the Pilsener Brewing Company

- Founded in 1892 by Wenzel Medlin
 - Derives its name from the Czech city of Pilsen
 - At the this time, Pilseners were not common in Cleveland
- Medlin went into bankruptcy in 1894
 - Leadership of the company was assumed by Vaclav Humel
- Site saw significant expansion from 6,000 barrels in 1894 to 26,000 Barrels in 1898
 - 1901 – Campus expansion
 - 5 story brew house
 - Boiler House
 - Stables
 - Pitch House
 - 1915 – Construction of the Bottling-Works Building
 - Also contained Corporate Offices



History of the Pilsener Brewing Company Pt. 2

- Bottling-Works Building was completed in 1915 for \$300,000
 - Designed by Gustave Mueller of Detroit
 - Capable of bottling 5,000 bottles per hour
 - Building was used to showcase their business
 - Participants were served dinner and entertained by cabaret dancers and shown “moving pictures”
 - “no doubt many prohibitionists were converted”
- 1920 – Prohibition
 - Operations were converted to produce “near beer” and other products
 - Delivered ice and coal to local homes
- 1933 – End of Prohibition
 - First local brewery to resume production
 - 175,000 barrels annually
- Purchased by City Ice & Fuel in 1935 – End of Bohemian ownership

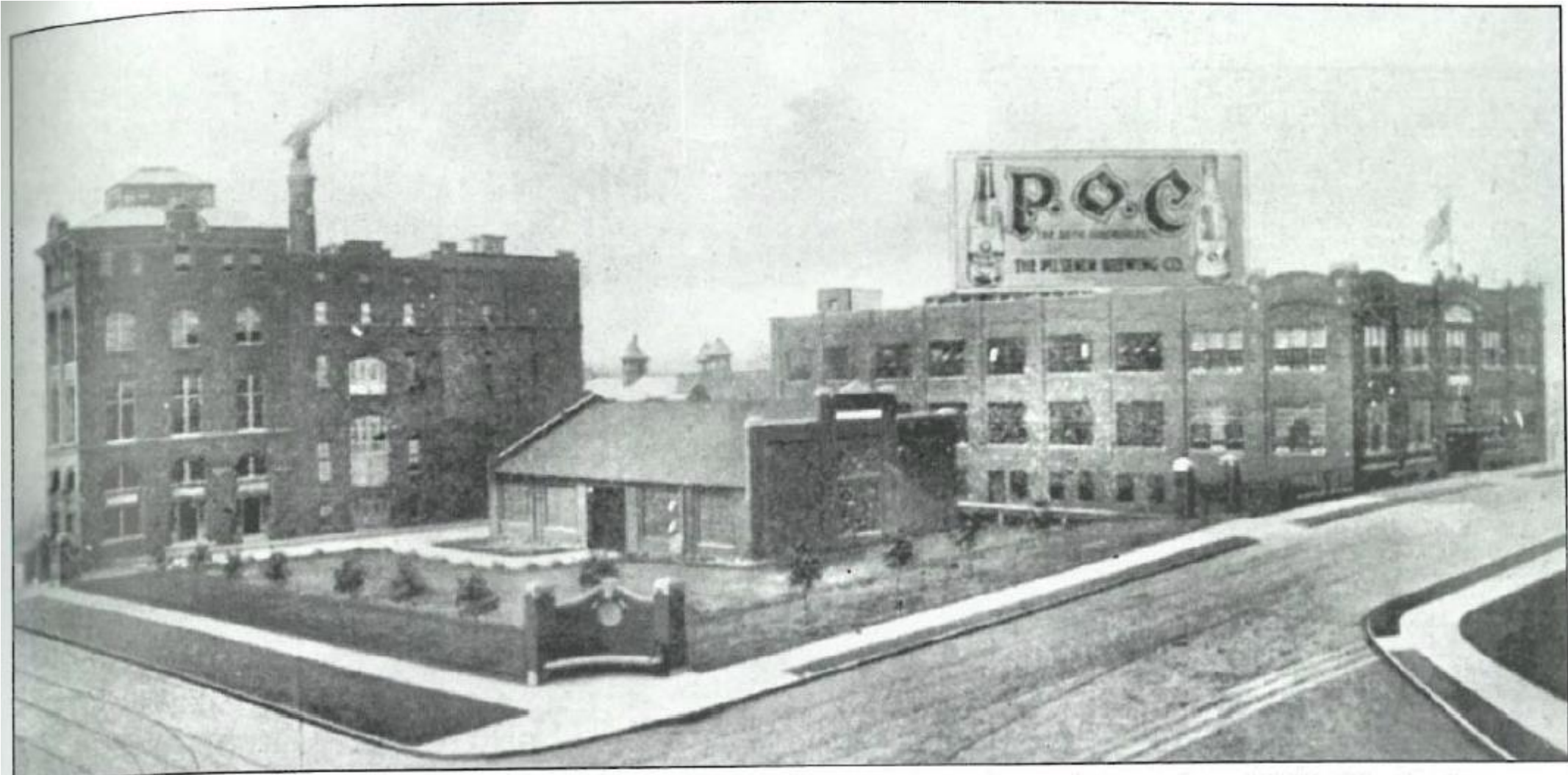


History of the Pilsener Brewing Company Pt. 3

- Production continued to increase up to 500,000 barrels in 1951
 - Small brewers struggled in competition with national brands
- Purchased by Duquesne in 1963
 - Brewing operations were moved to Pittsburgh
- Purchased by Schmidt in 1972 and moved to Schmidt's facilities on Quincy Avenue in Cleveland
- Hasn't been brewed since 1986 with the closing of Schmidt
- Since 1963, the buildings of the Pilsener Brewing Company have remained partially vacant for storage, warehousing, and auto related uses
- To-date fires have taken all but the Bottling-Works building



Pilsener Brewing Company - 1914



Pilsener Brewing Company- Today



Recent Aerial View



Clark Avenue

W 65th St

 6605 Clark Avenue

Pilsener Brewing Company – Current Conditions



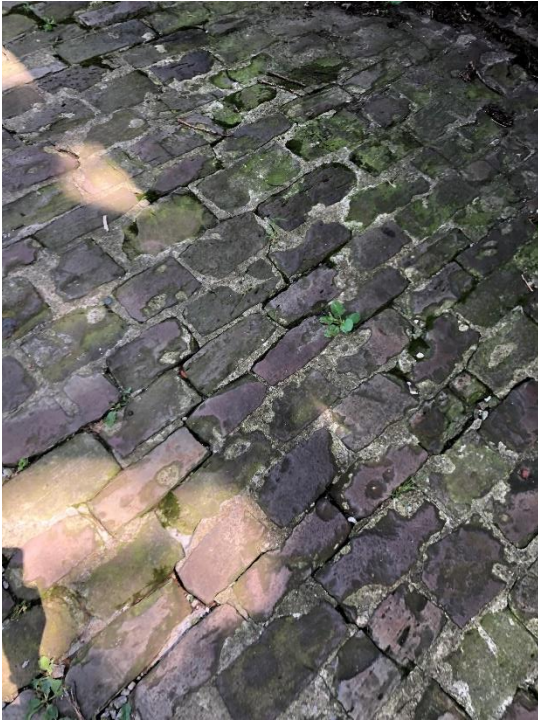
Pilsener Brewing Company – Current Conditions



Pilsener Brewing Company – Current Conditions



Pilsener Brewing Company – Current Conditions



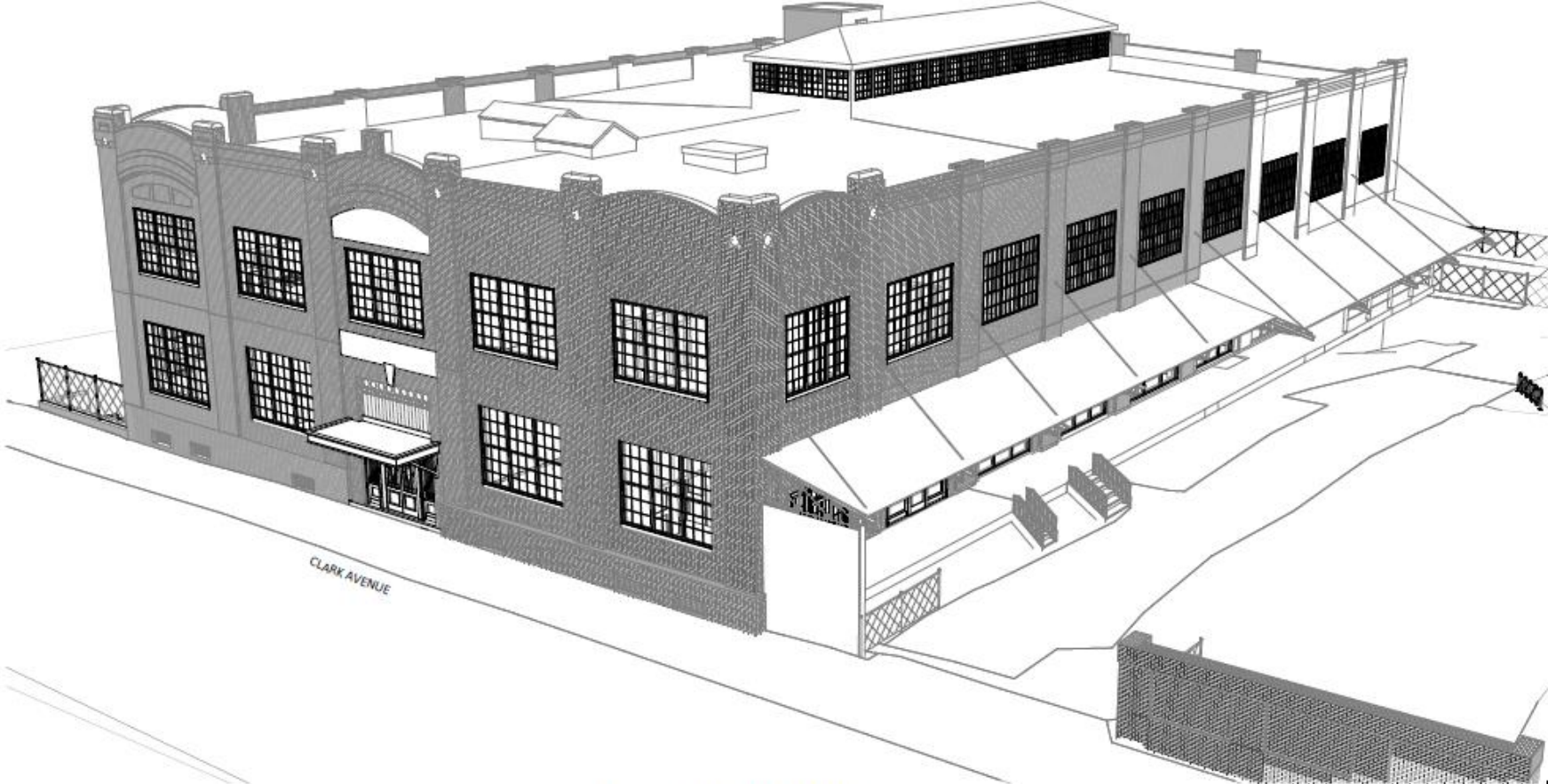
Pilsener Brewing Company – Current Conditions



Pilsener Square – Project Site

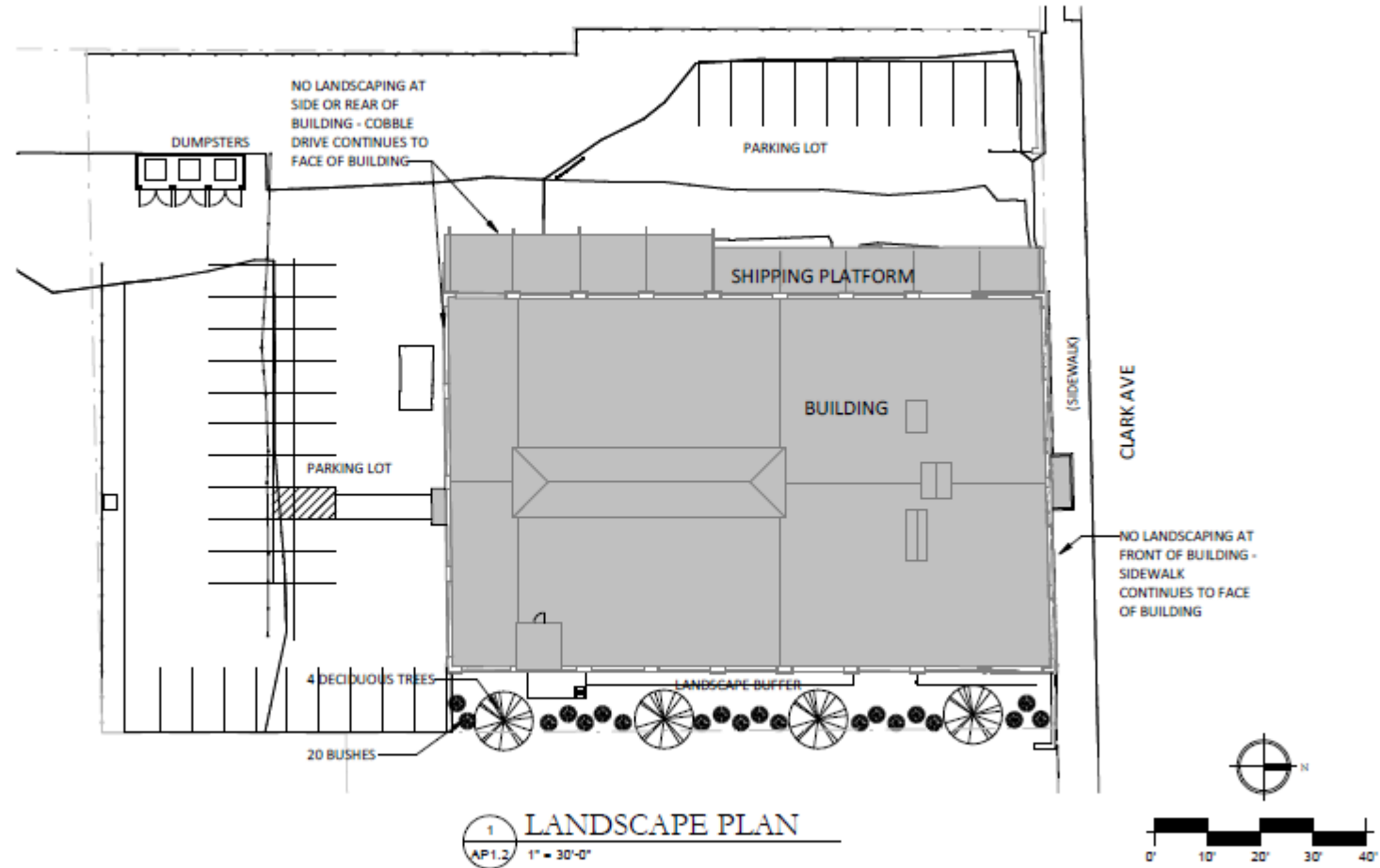


Pilsener Square – Adaptive Reuse

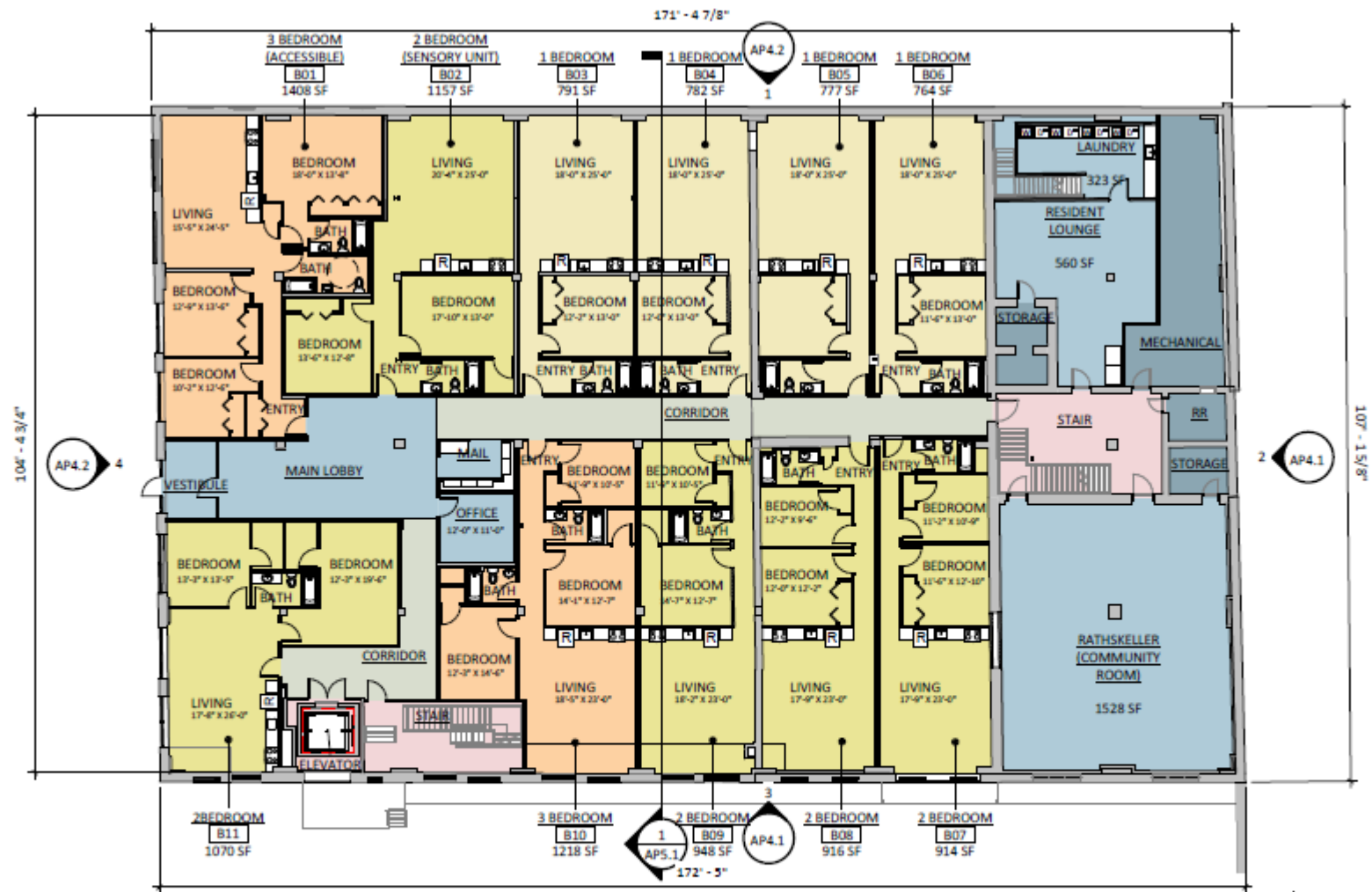


1 CLARK STREET 3D VIEW
AP4.3

Pilsener Square – Site Plan



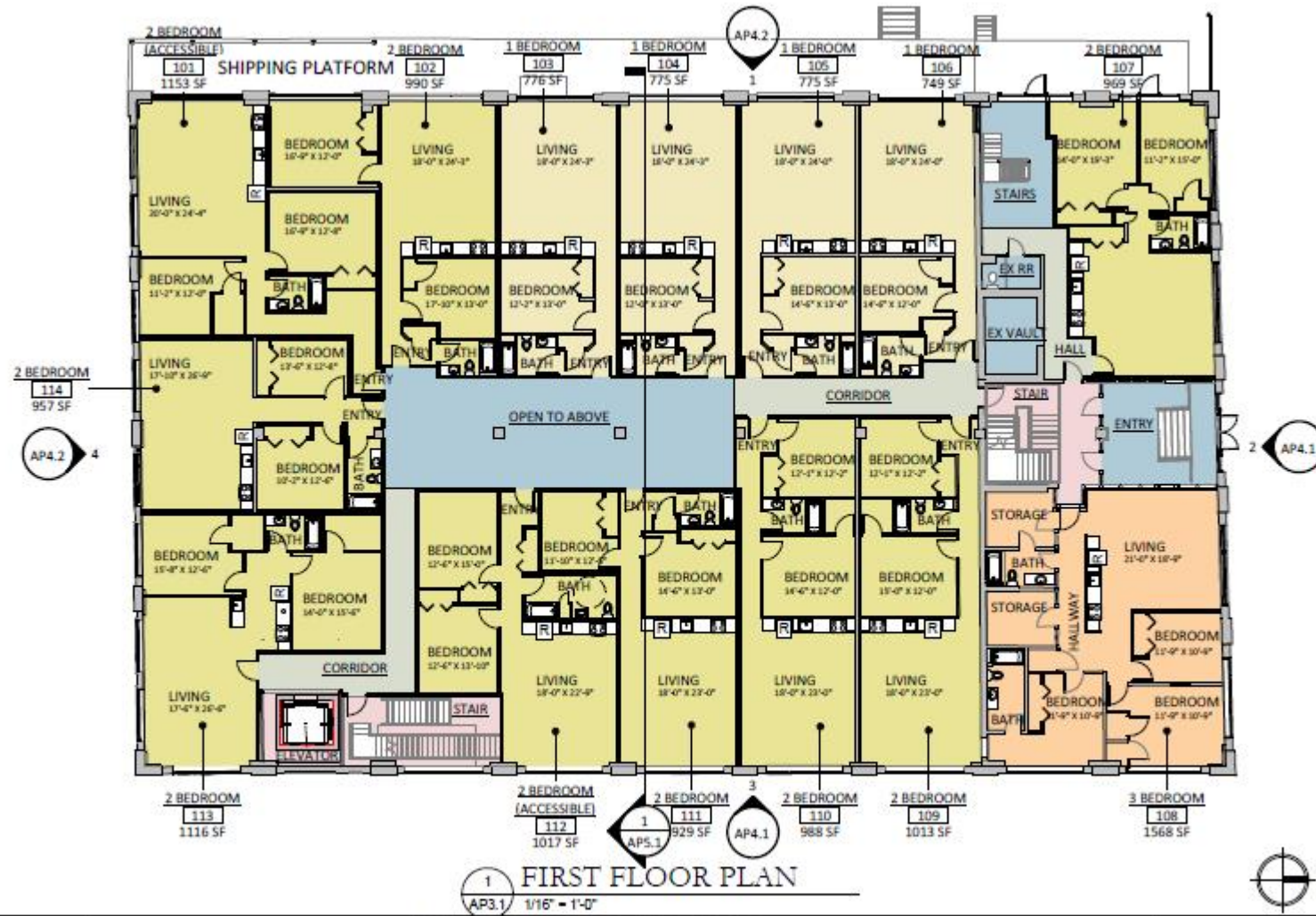
Pilsener Square – Basement Floor



1 BASEMENT FLOOR PLAN
AP3.0 1/16" = 1'-0"



Pilsener Square – First Floor



Pilsener Square – First Floor

