

S/L 18

THE HANDY PARK SUBDIVISION

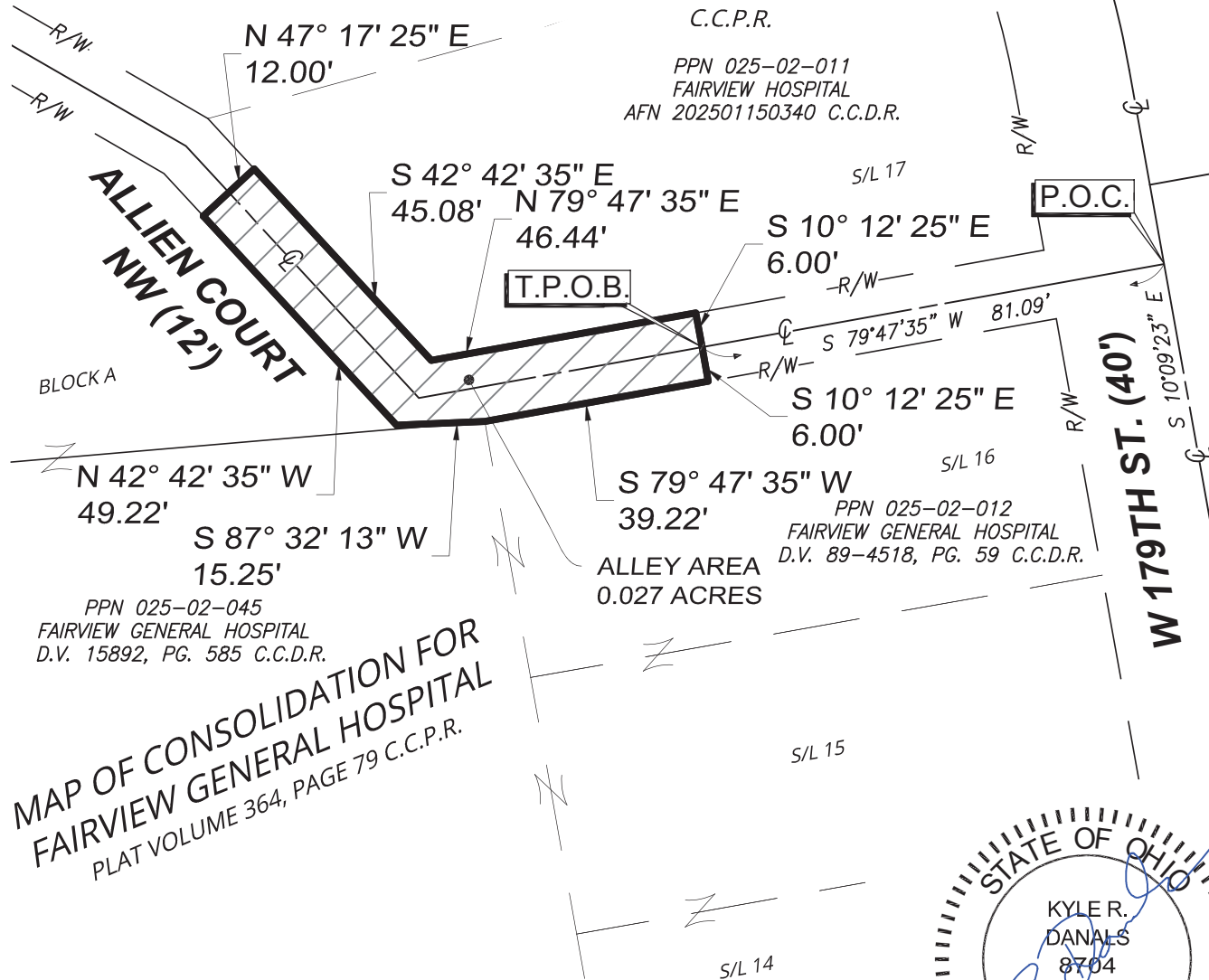
PLAT VOLUME 108, PAGE 36

C.C.P.R.

PPN 025-02-011

FAIRVIEW HOSPITAL

AFN 202501150340 C.C.D.R.



MAP OF CONSOLIDATION FOR
FAIRVIEW GENERAL HOSPITAL
PLAT VOLUME 364, PAGE 79 C.C.P.R.

LEGEND

R/W RIGHT-OF-WAY

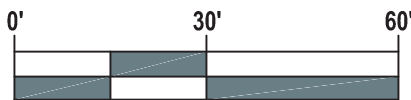
CL CENTERLINE

C.C.D.R. CUYAHOGA COUNTY DEED RECORDS

C.C.P.R. CUYAHOGA COUNTY PLAT RECORDS

[P.O.C.] POINT OF COMMENCEMENT

[T.P.O.B.] TRUE POINT OF BEGINNING



GRAPHIC SCALE: 1" = 30'

BASIS OF BEARINGS

BEARINGS ARE BASED ON THE CENTERLINE OF WEST 179TH STREET, OBSERVED AS SOUTH 10° 09' 23" EAST BETWEEN MONUMENTS FOUND, PER THE OHIO STATE PLANE COORDINATE SYSTEM, NORTH ZONE (3401), NAD83 (2011) 2010.0 EPOCH, AS DERIVED FROM GNSS OBSERVATIONS VIA THE O.D.O.T. RTN (REAL-TIME NETWORK).



11-07-2025

No.	Revision Date	Date	11/07/2025
		Drawn By	KRD
		Designed By	N/A
		Scale	1" = 30'
		Project	099080.00

ALLEY AREA EXHIBIT

SITUATED IN THE CITY OF CLEVELAND, COUNTY OF CUYAHOGA, STATE OF OHIO, AND BEING PART OF OF ORIGINAL ROCKPORT TOWNSHIP SECTION NO. 13, AND PART OF ALLIEN COURT NW (12 FEET WIDE) AS DEDICATED IN THE HANDY PARK SUBDIVISION AS RECORDED IN PLAT VOLUME 108, PAGE 36 OF CUYAHOGA COUNTY PLAT RECORDS



Figure No. 1