

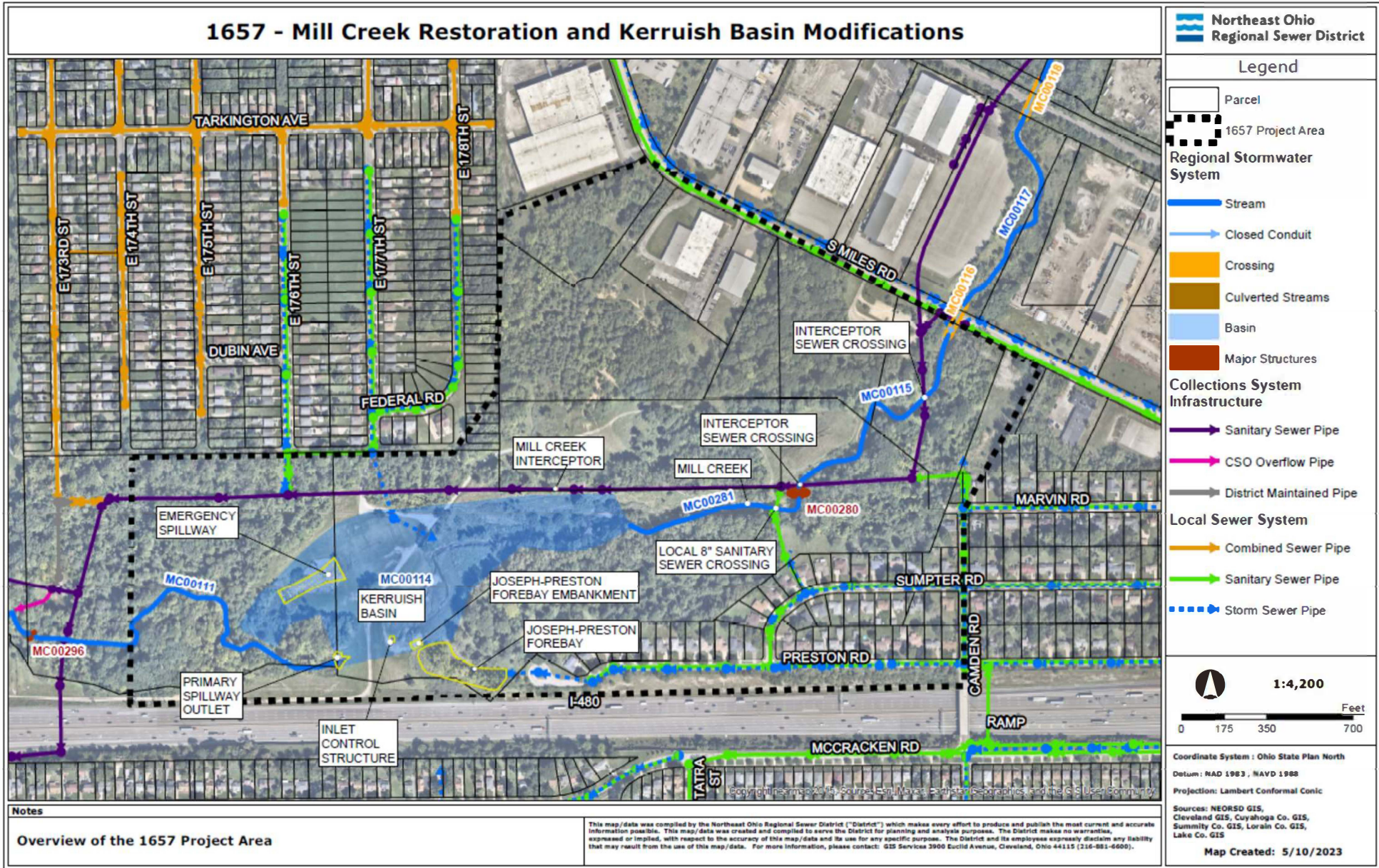
# Mill Creek Restoration and Kerruish Basin Modifications Project



# Project Overview Map

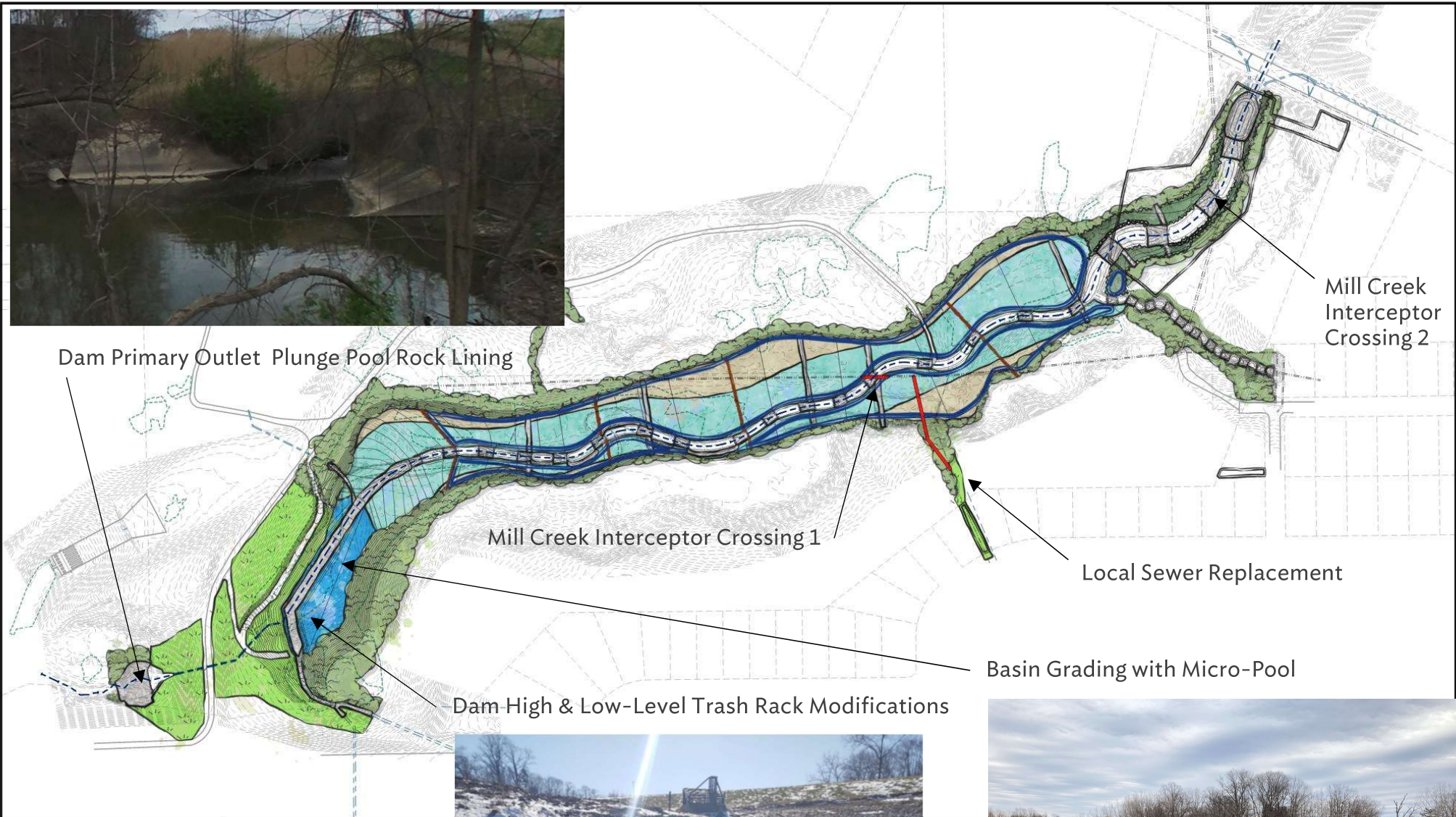


# Enlarged Project Overview Map





Dam Primary Outlet Plunge Pool Rock Lining



Mill Creek Interceptor Crossing 1

Mill Creek Interceptor Crossing 2

Local Sewer Replacement

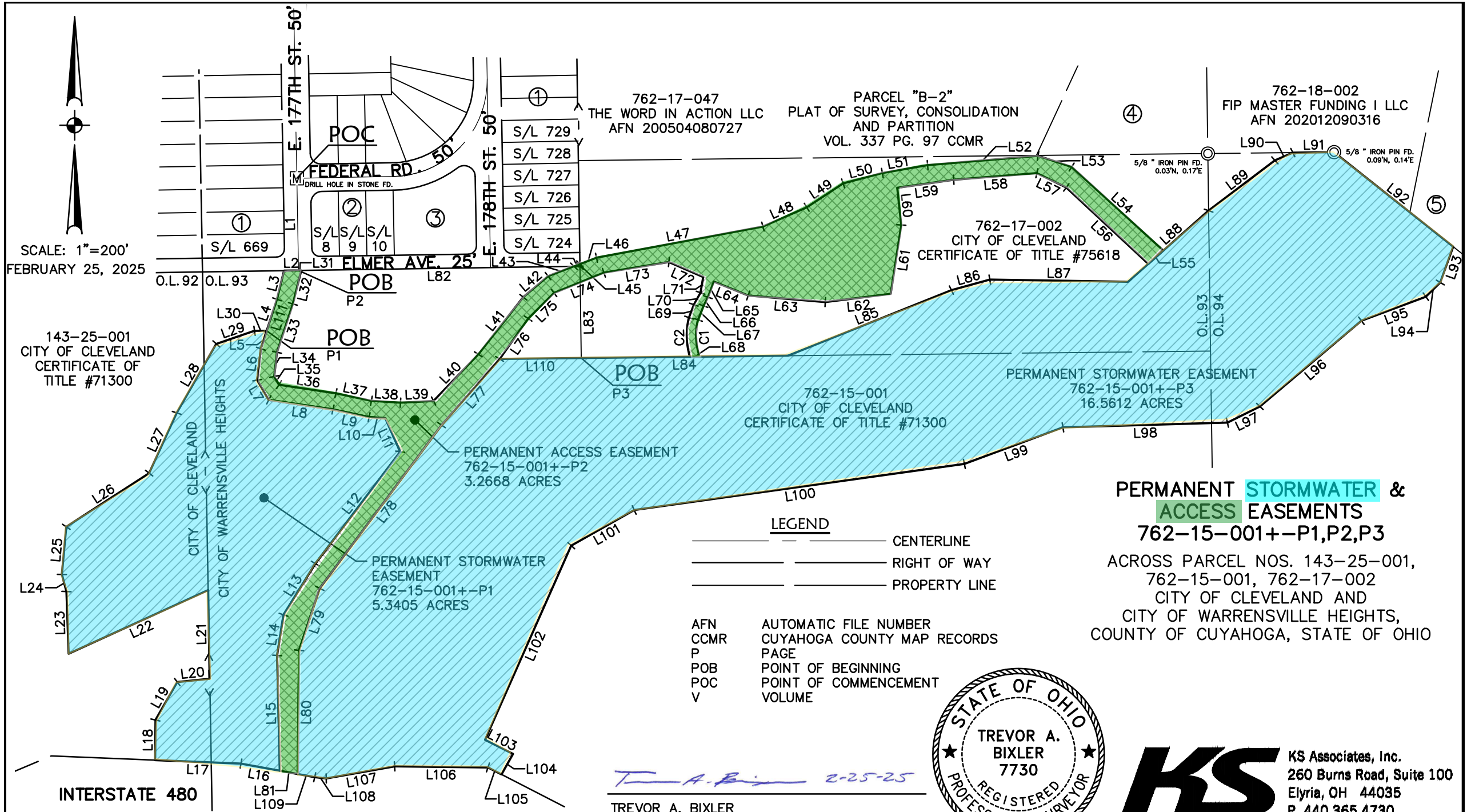
Basin Grading with Micro-Pool

Dam High & Low-Level Trash Rack Modifications





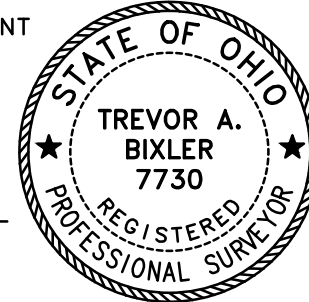
SCALE: 1"=200'  
FEBRUARY 25, 2025



**PERMANENT STORMWATER & ACCESS EASEMENTS**  
**762-15-001+-P1,P2,P3**  
ACROSS PARCEL NOS. 143-25-001,  
762-15-001, 762-17-002  
CITY OF CLEVELAND AND  
CITY OF WARRENSVILLE HEIGHTS,  
COUNTY OF CUYAHOGA, STATE OF OHIO

**LEGEND**  
—— CENTERLINE  
—— RIGHT OF WAY  
—— PROPERTY LINE

AFN AUTOMATIC FILE NUMBER  
CCMR CUYAHOGA COUNTY MAP RECORDS  
P PAGE  
POB POINT OF BEGINNING  
POC POINT OF COMMENCEMENT  
V VOLUME



*T. A. Bixler 2-25-25*  
TREVOR A. BIXLER  
PROFESSIONAL SURVEYOR, OHIO NO. 7730

**KS ASSOCIATES**  
KS Associates, Inc.  
260 Burns Road, Suite 100  
Elyria, OH 44035  
P 440 365 4730  
F 440 365 4790  
www.ksassociates.com