

Map Change 2687

Development, Planning & Sustainability

February 4, 2025



CITY OF CLEVELAND
Mayor Justin M. Bibb

CITY PLANNING COMMISSION

Proposal

Changing the Use, Area and Height Districts of parcels of land east of East 105th Street between Churchill Avenue and Orville Avenue.
(Map Change 2687)

Purpose

To promote walkability and support a diversity of housing typologies which is in alignment with the Connecting Cleveland 2020 comprehensive citywide plan. Without the zoning change, and establishing a Specific Mapped Setback, the proposed new housing development would not be able to be constructed.



CITY OF CLEVELAND
Office of the Council

www.clevelandcitycouncil.org

Kevin Conwell COUNCIL MEMBER, WARD 9

COMMITTEES: Health, Human Services & the Arts - Chair • Finance, Diversity, Equity & Inclusion • Operations • Rules

CITY of CLEVELAND

MAYOR JUSTIN M. BIBB

CITY PLANNING COMMISSION

October 22, 2024

Board of Zoning Appeals
601 Lakeside Ave E #516,
Cleveland, OH 44114

To Whom It May Concern,

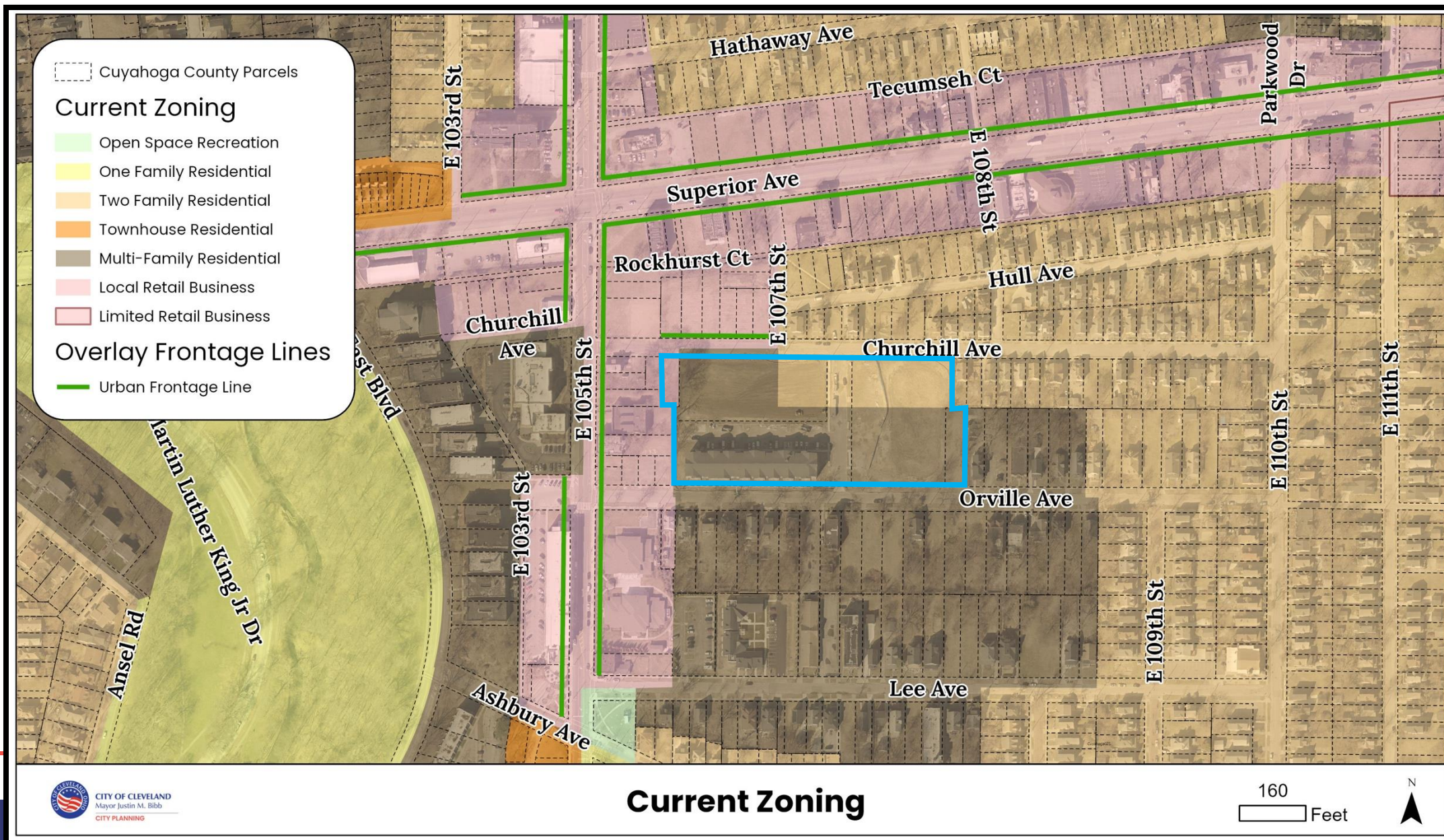
I fully support the map change for Phase II of the Gateway Churchill project.
This project will bring beauty and development to the Ward 9 community.

If you have any questions, comments, or concerns, please contact my office at
(216) 664-4252 or at kconwell@clevelandcitycouncil.org.

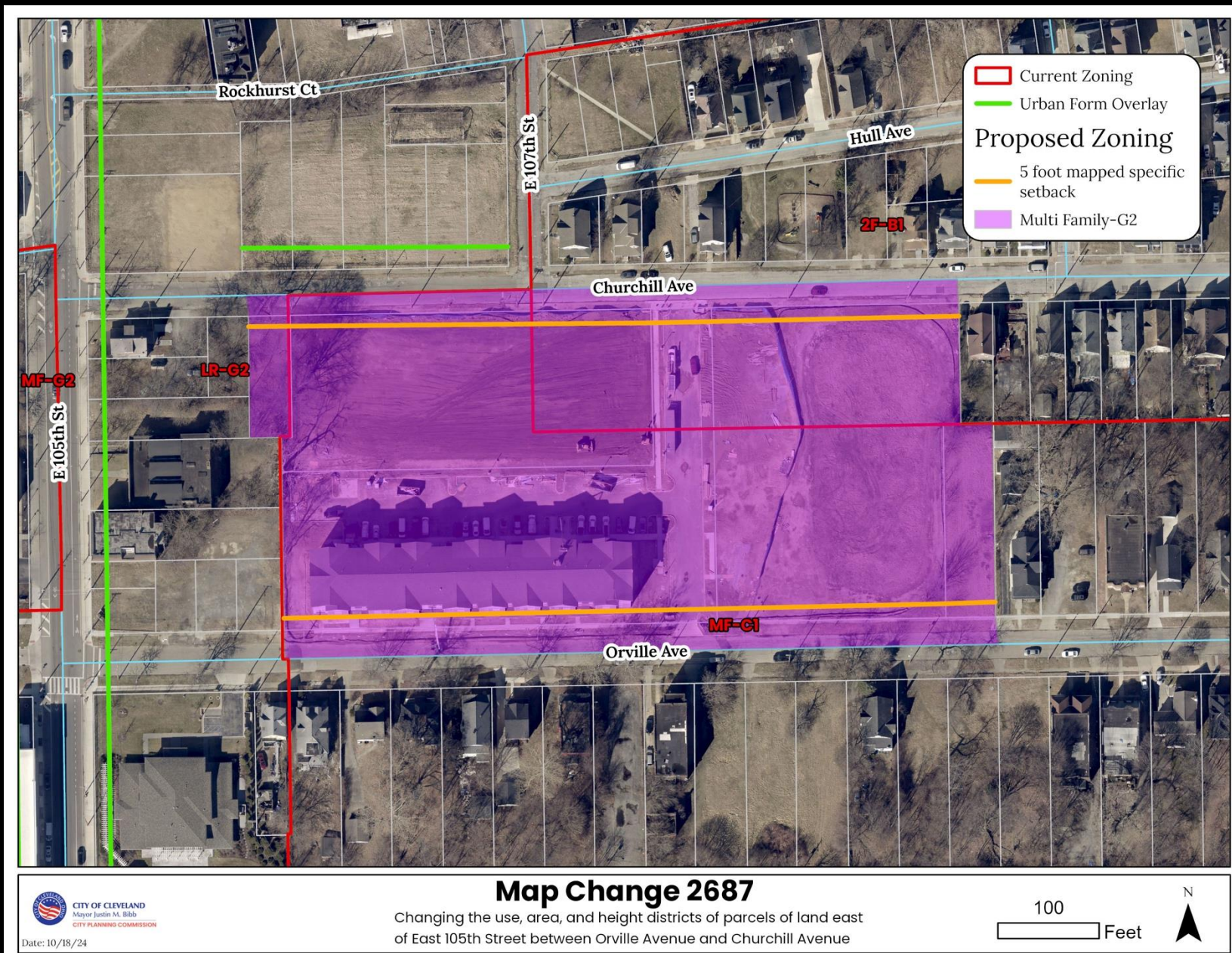
Sincerely yours,

A handwritten signature in cursive script that reads "Kevin Conwell".

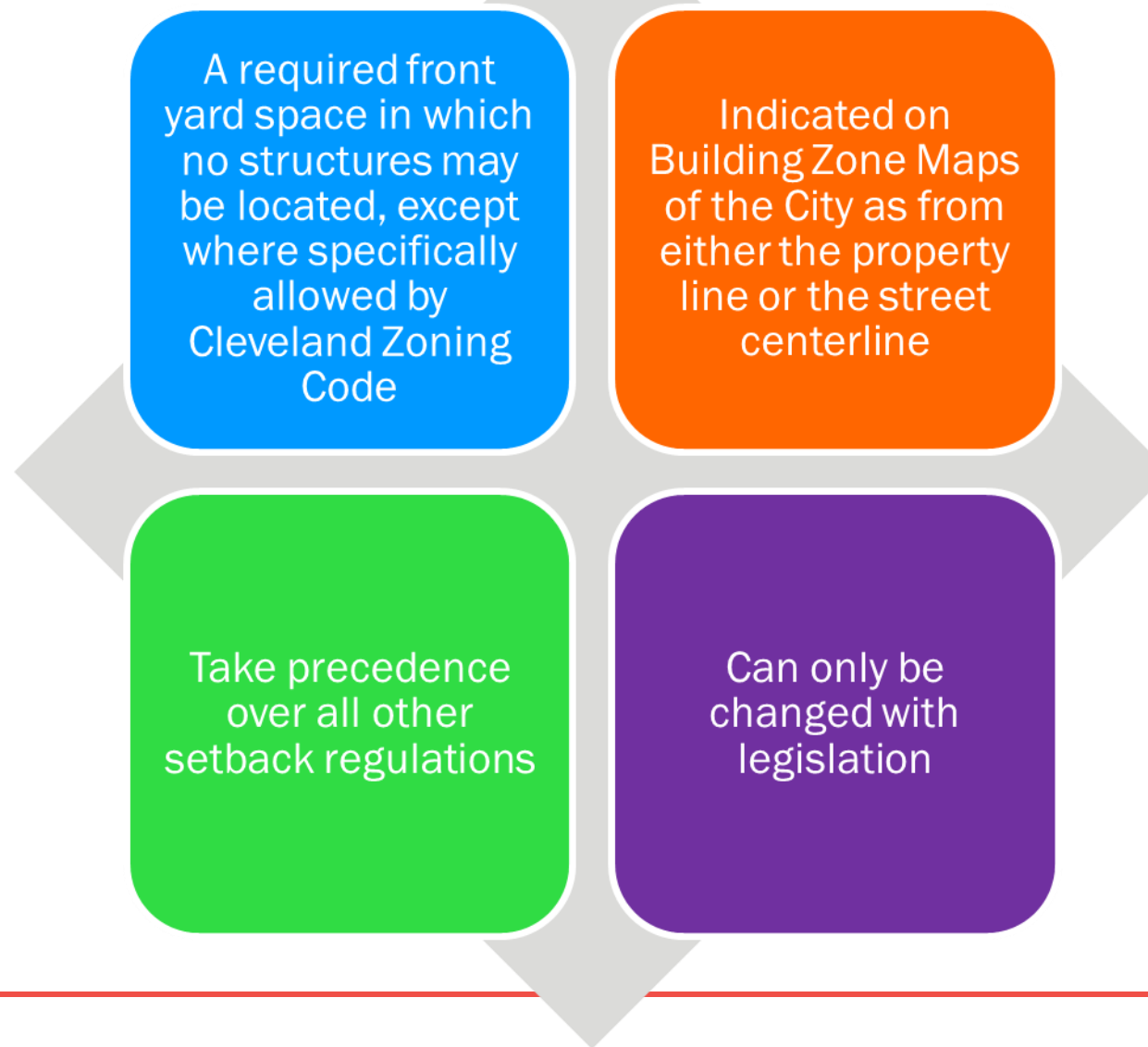
Kevin Conwell
Cleveland City Councilman, Ward 9



Map Change 2687



Mapped Setbacks

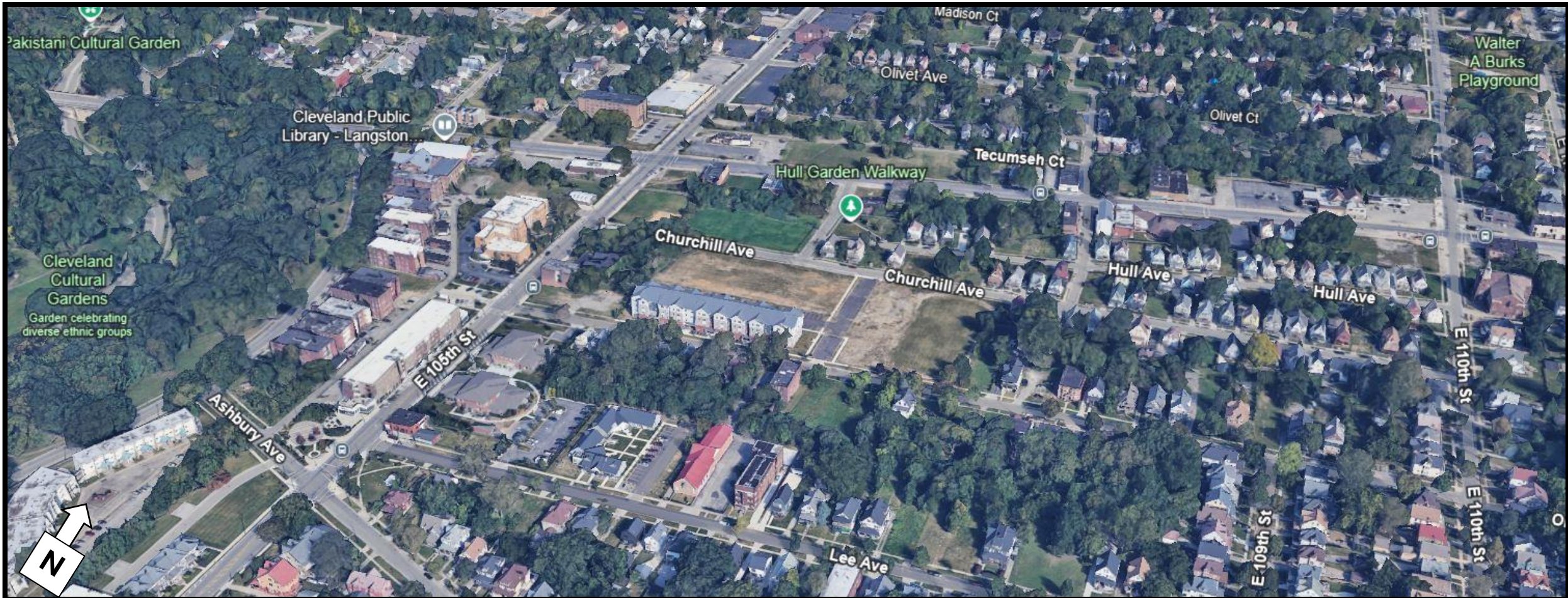


Current Context

CITY of CLEVELAND

MAYOR JUSTIN M. BIBB

CITY PLANNING COMMISSION



Southeastern View
Churchill Ave



Northwestern View
Churchill Ave



Southwestern View
Churchill Ave

Eastern View
Churchill Ave



Northwestern View
Orville Ave



Northwestern View
Orville Ave



Southeastern View
Orville Ave



Northeastern View
Orville Ave



Map Change 2687

