

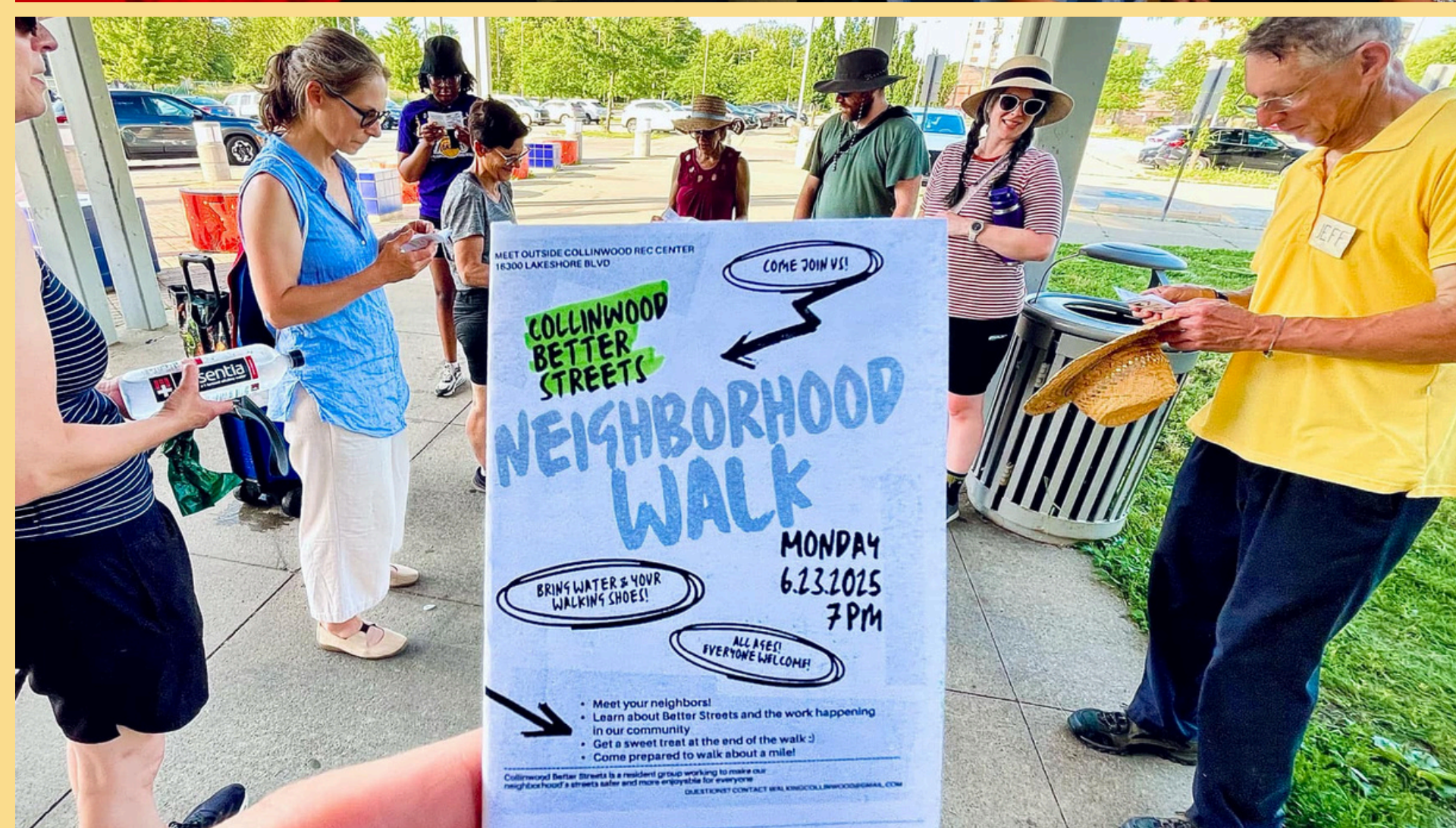
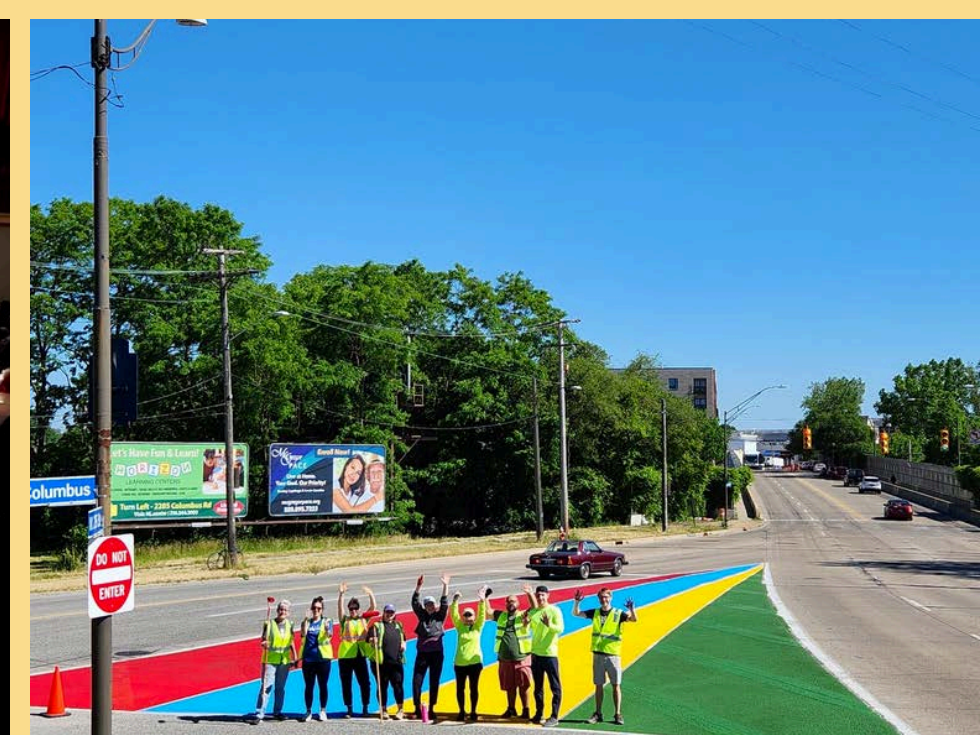
BIKE CLEVELAND

**HEALTH, HUMAN SERVICES &
THE ARTS**

COMMITTEE PRESENTATION



Better Streets





Cleveland Transportation Academy



Youth education





Bicyclist & Pedestrian

CRASH REPORT

Cleveland, Ohio
2025

The health of Clevelanders depends on a transportation system where:

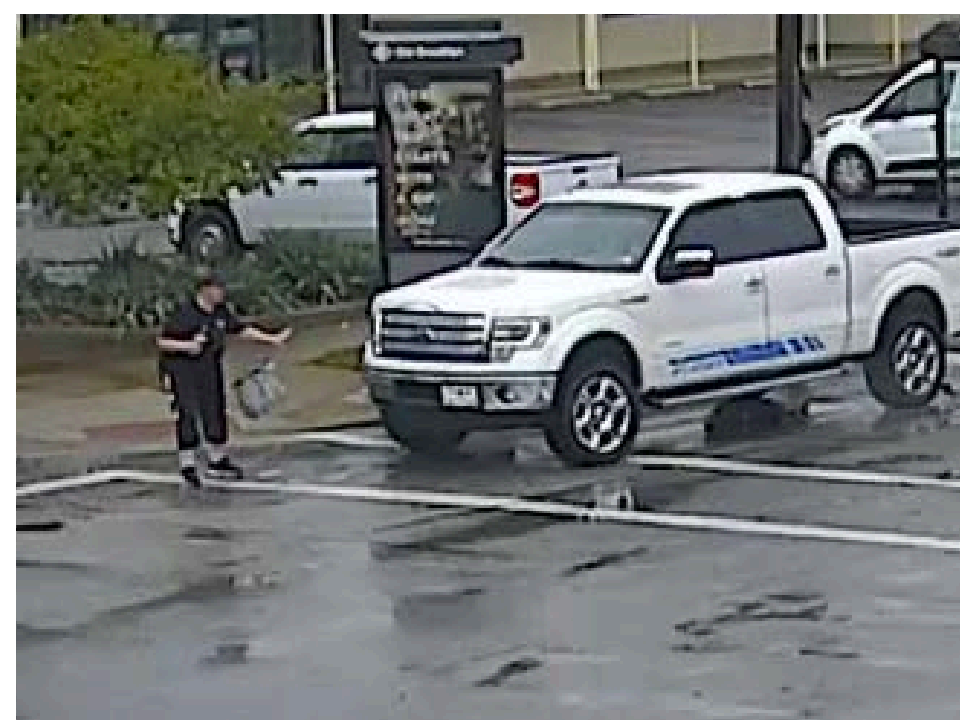
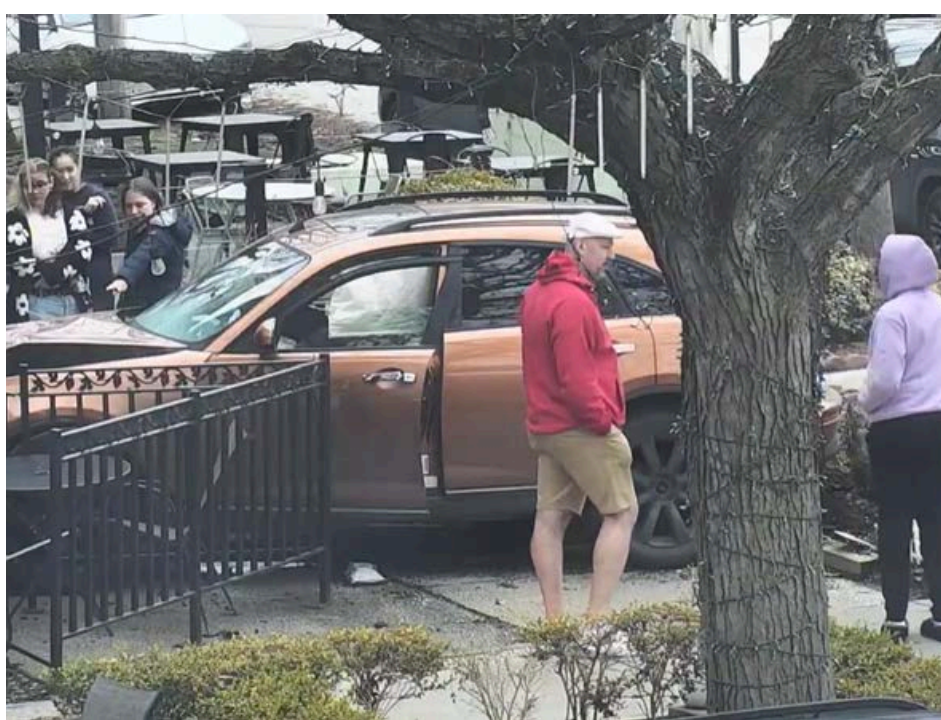
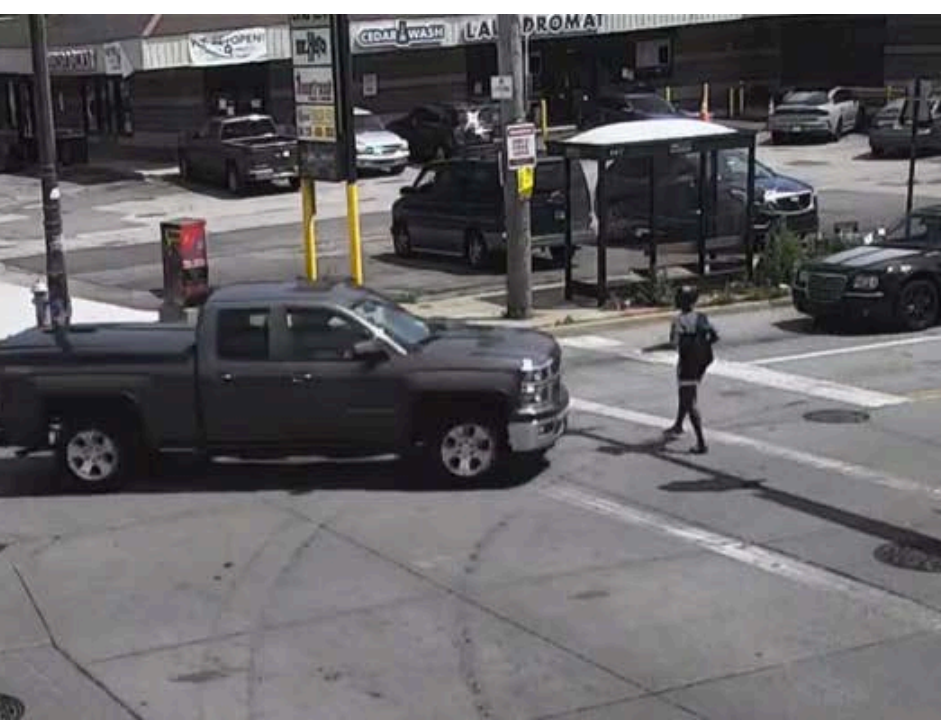
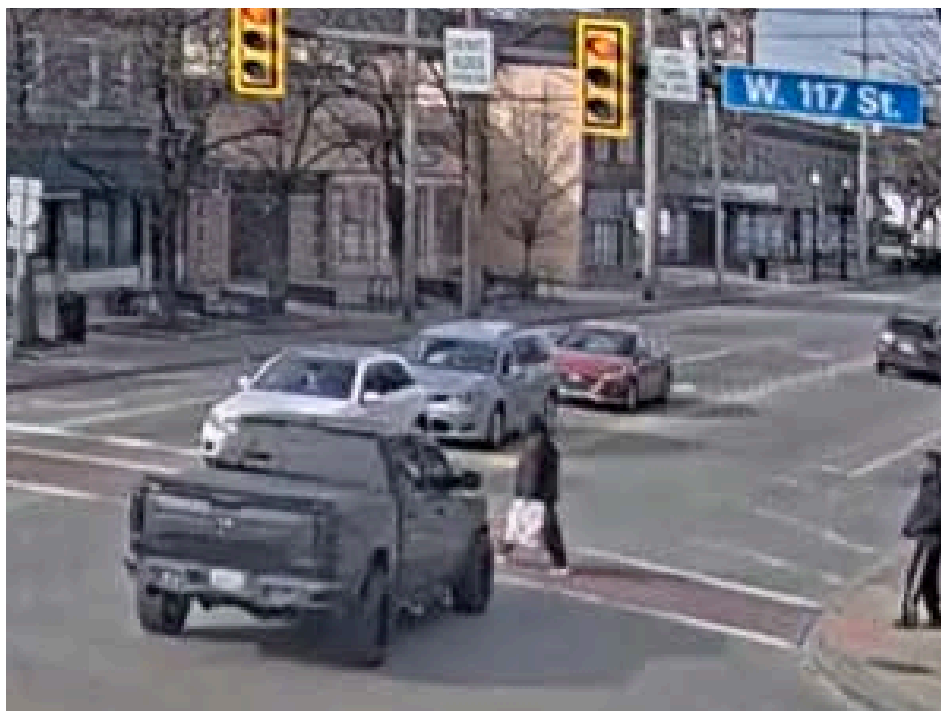
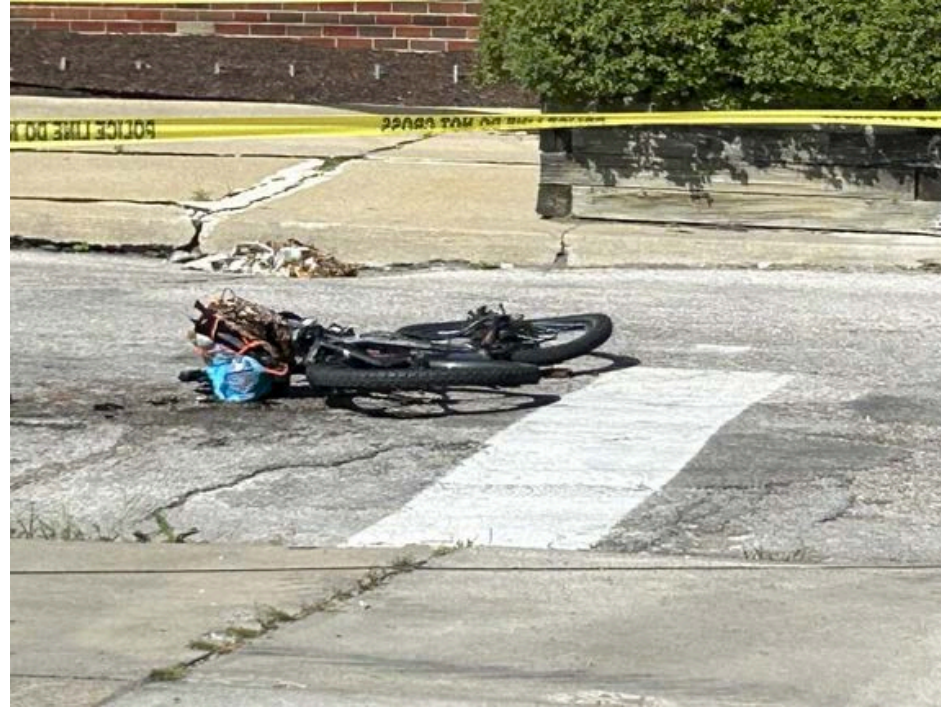
Everyone can get where they need to go without seriously injured or killed.

Everyone can access their needs.

The health of Clevelanders depends on a transportation system where:

Everyone can get where they need to go without seriously injured or killed.

Everyone can access their needs.



“In November of last year, I was hit while crossing the street on Lorain Avenue. The driver was turning left and hit me. I had a fractured tibia, nine broken ribs, and was taken to Fairview Hospital right away. I was in the hospital for 3 weeks, followed by another month in rehab.

This was something I never experienced, it was all new, and I had to go through hell to get the authorizations I needed and get care across the different hospital systems. I’m still recovering. The driver was ticketed for \$236.”

- 74-year-old Cleveland resident

“I was crossing the street at E. 105th & St Clair with a few seconds left, so I sprinted and tried to make it. I was halfway across the street when a driver turning left hit me. I flew off the hood of the car and landed around 20 feet from where I was. The driver took off while a bystander called 911.

I had a torn ACL and cuts on my torso. I got through reconstruction surgery, and will be in a brace for another 9-12 months.

A couple days later, I called the police to make a report. The EMS that responded had given me a sheet of paper with the license plate number written on it, but the paper got lost somehow with everything that was happening.

Another time, a driver almost hit a group of friends and I while we were walking down the street. We screamed before he could hit us, but it was a close call. I didn't think much about this or notice how people drove until those two incidents. I think about it now, and it's stuck with me.”

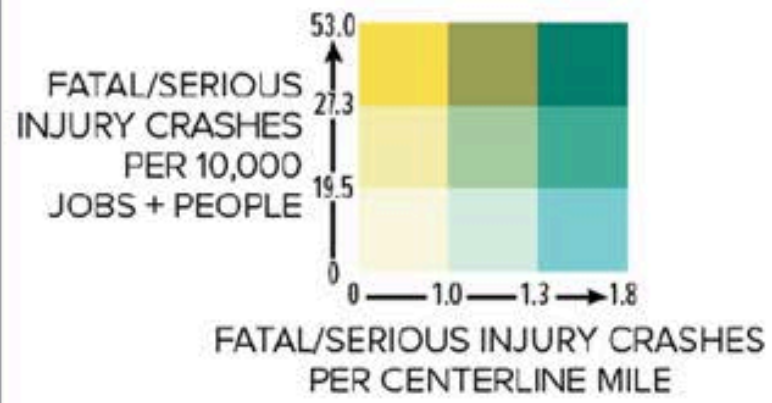
- Jeremiah, 19-year-old Cleveland resident

“On March 9th, I was headed back from the local dollar store at Pearl & Broadview. I live in senior housing nearby, and a lot of seniors in the area are pedestrians and frequent this dollar store. I was crossing Pearl with the walk signal and in a crosswalk, when a driver turning left hit me. The driver gets out, yells at me to get up, and eventually leaves while bystanders offer support. I was taken to the hospital and treated for 10 broken bones among other injuries – I spent nearly a month in a rehab center. Although the crash was on camera and the driver was uninsured, there were no tickets or charges and I have to pursue this in civil court.

Since that crash, I have changed where I cross the street to avoid this intersection and have advised others in my building to do the same. There are a lot of dangerous intersections in the neighborhood, like Pearl & State too, and there is a lot of pedestrian traffic.”

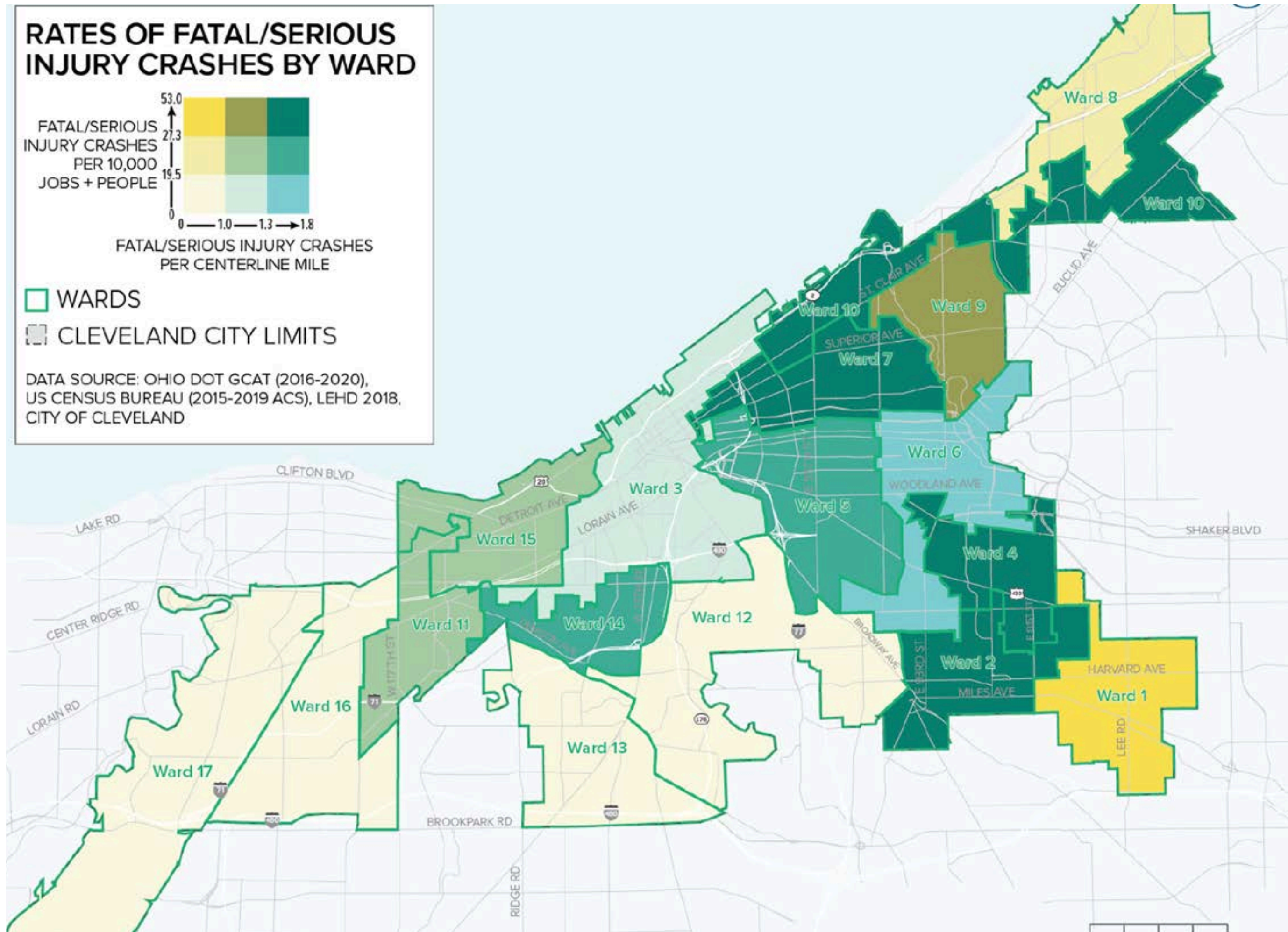
- Andrew, 81-year-old Cleveland resident

RATES OF FATAL/SERIOUS INJURY CRASHES BY WARD



- WARDS
- CLEVELAND CITY LIMITS

DATA SOURCE: OHIO DOT GCAT (2016-2020), US CENSUS BUREAU (2015-2019 ACS), LEHD 2018, CITY OF CLEVELAND



Side guards on large vehicles used in city business



Leading Pedestrian Intervals



Limiting right turns on red



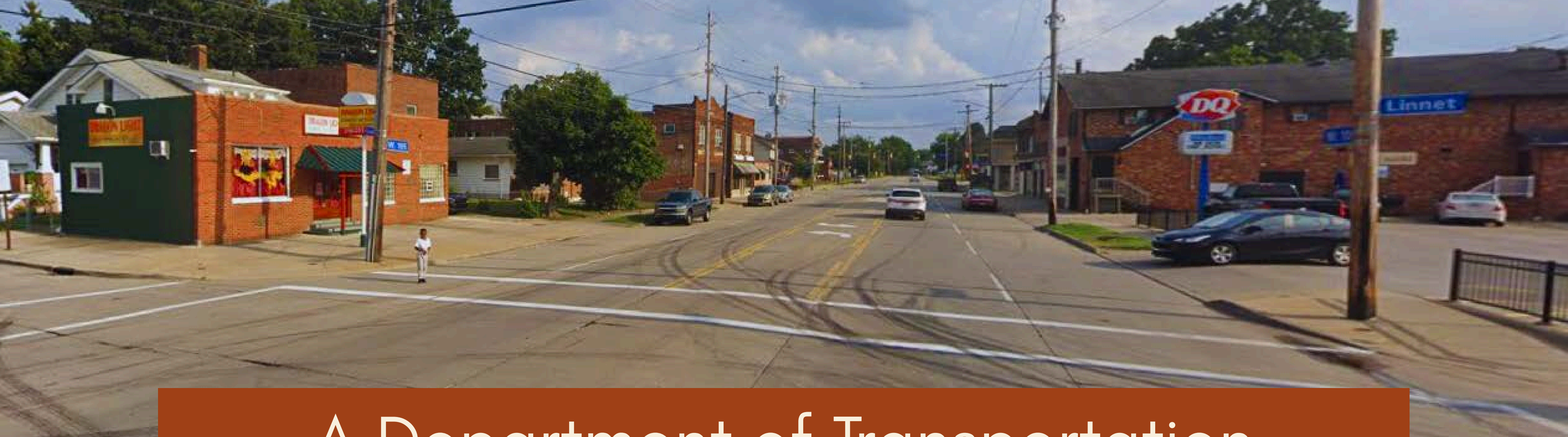
Lowering speed limits





Increase staff capacity in City Hall



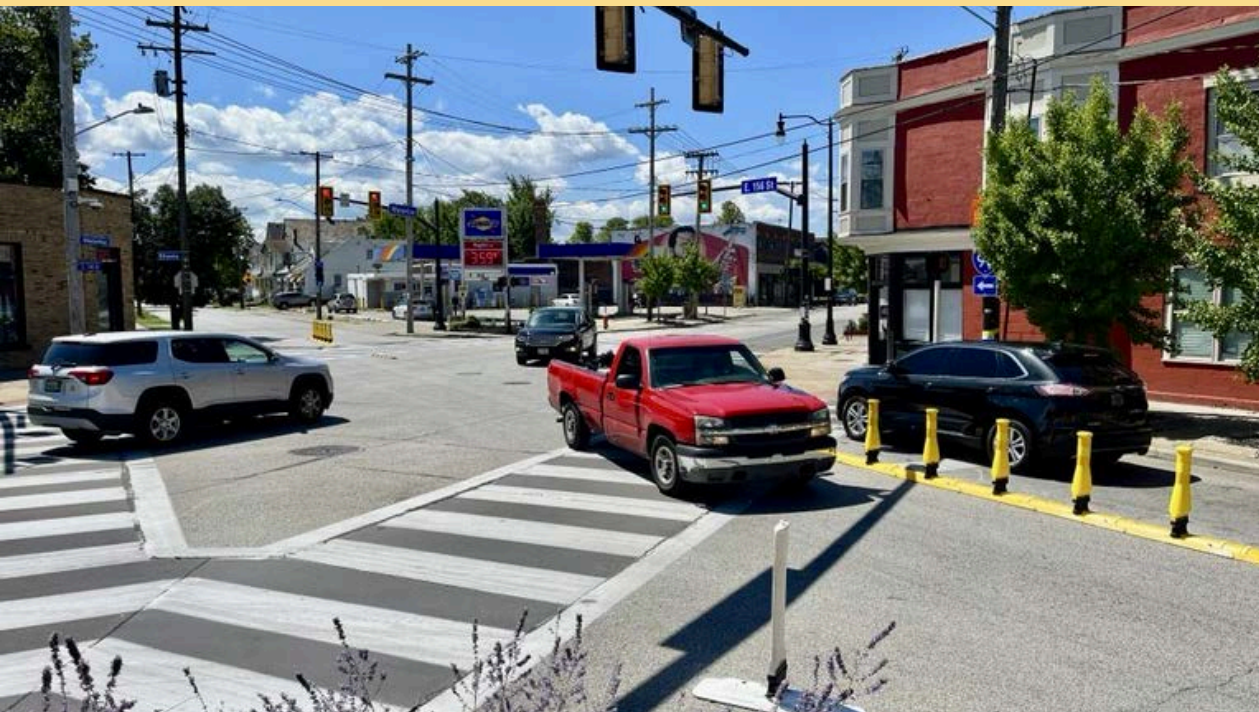
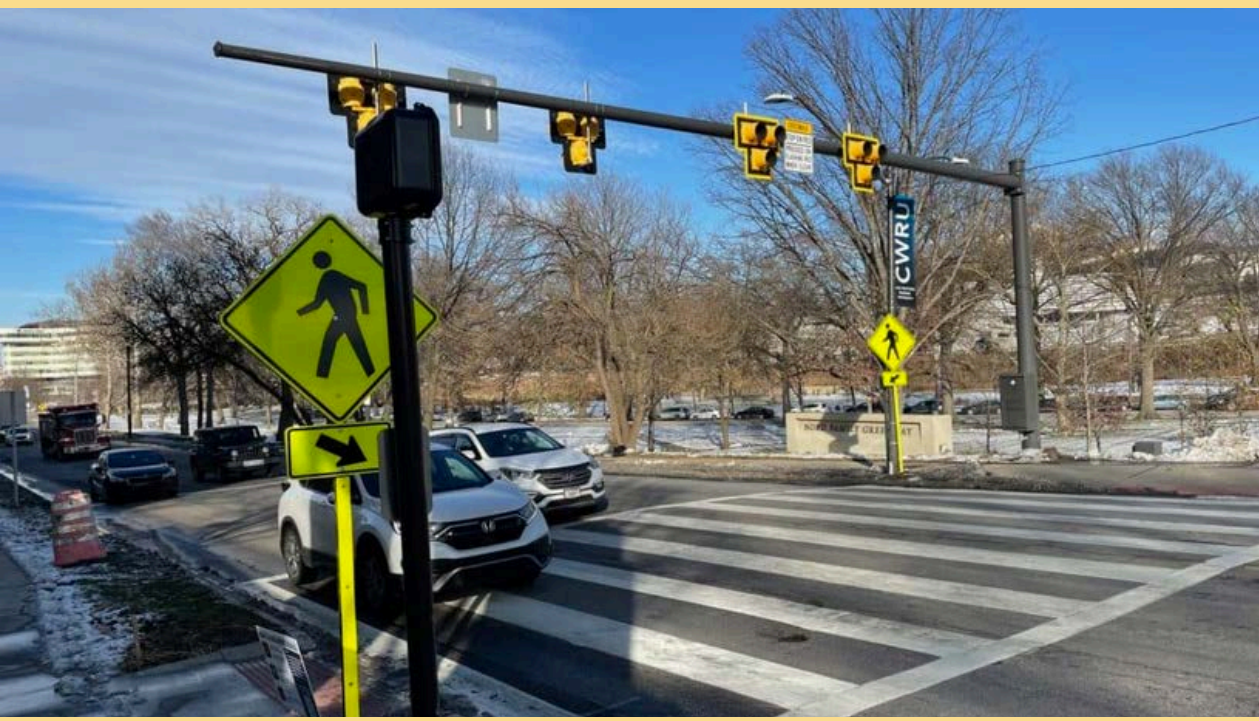


A Department of Transportation





Traffic calming – it works!



Franklin Blvd Mini-Roundabouts



Before safety project

- Daily # of cars: 2,272
- 8.3% of cars going over 35mph
- 2021 crashes: 40

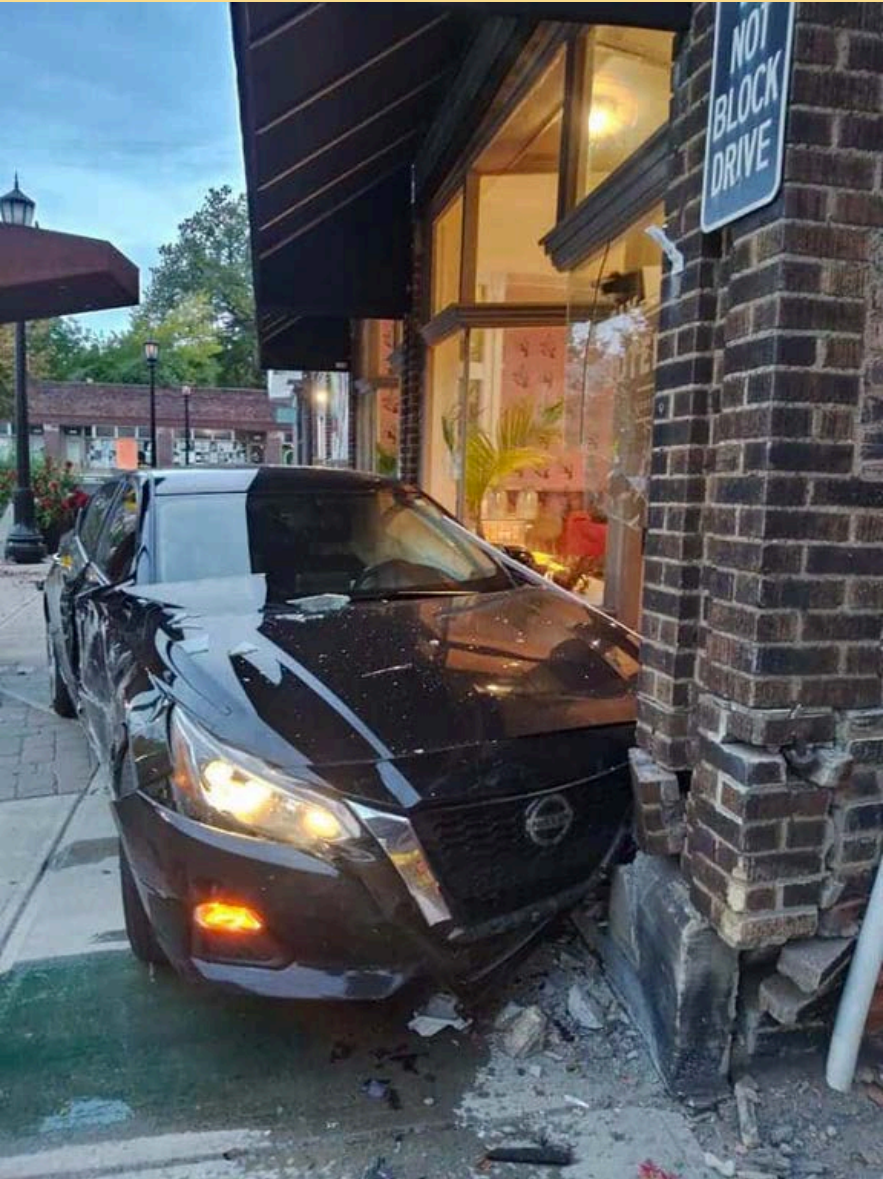
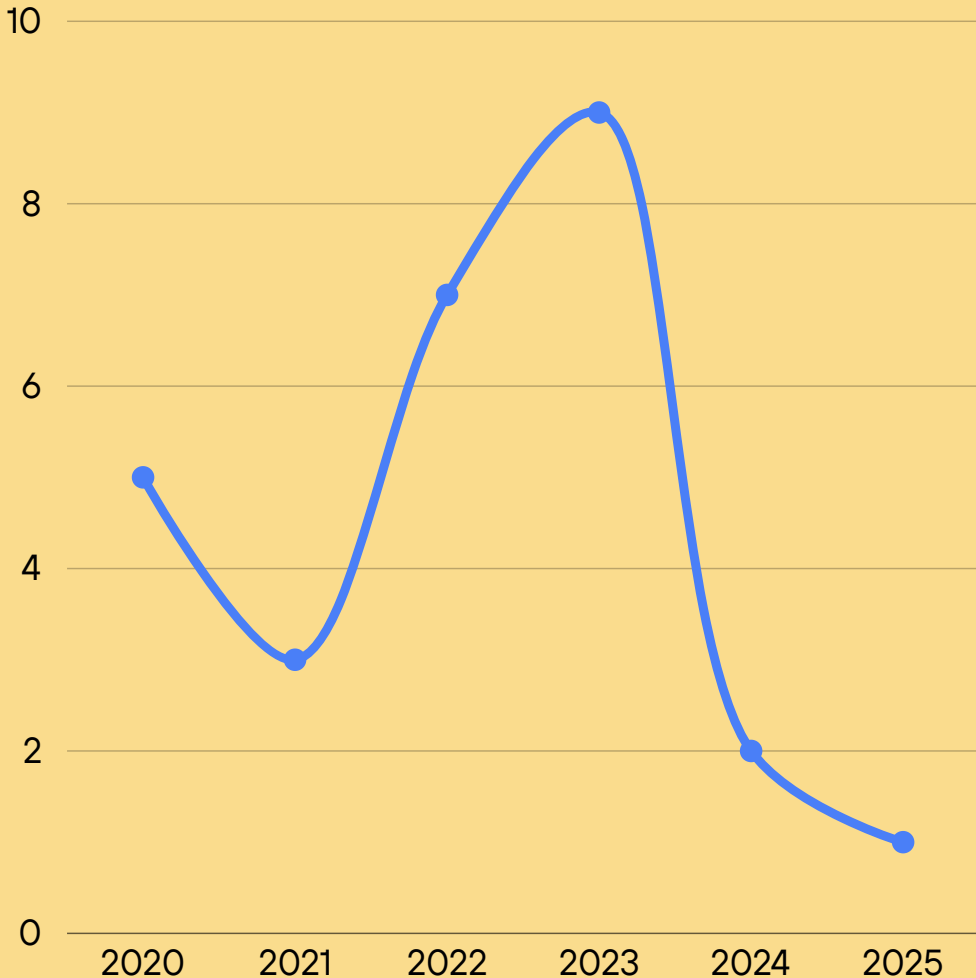
After safety project

- Daily # of cars: 1,100
- 1% of cars going over 35mph
- 2024 crashes: 4

Waterloo Arts District



Waterloo Crashes
E. 156th to E. 163rd



The health of Clevelanders depends on a transportation system where:

Everyone can get where they need to go without seriously injured or killed.

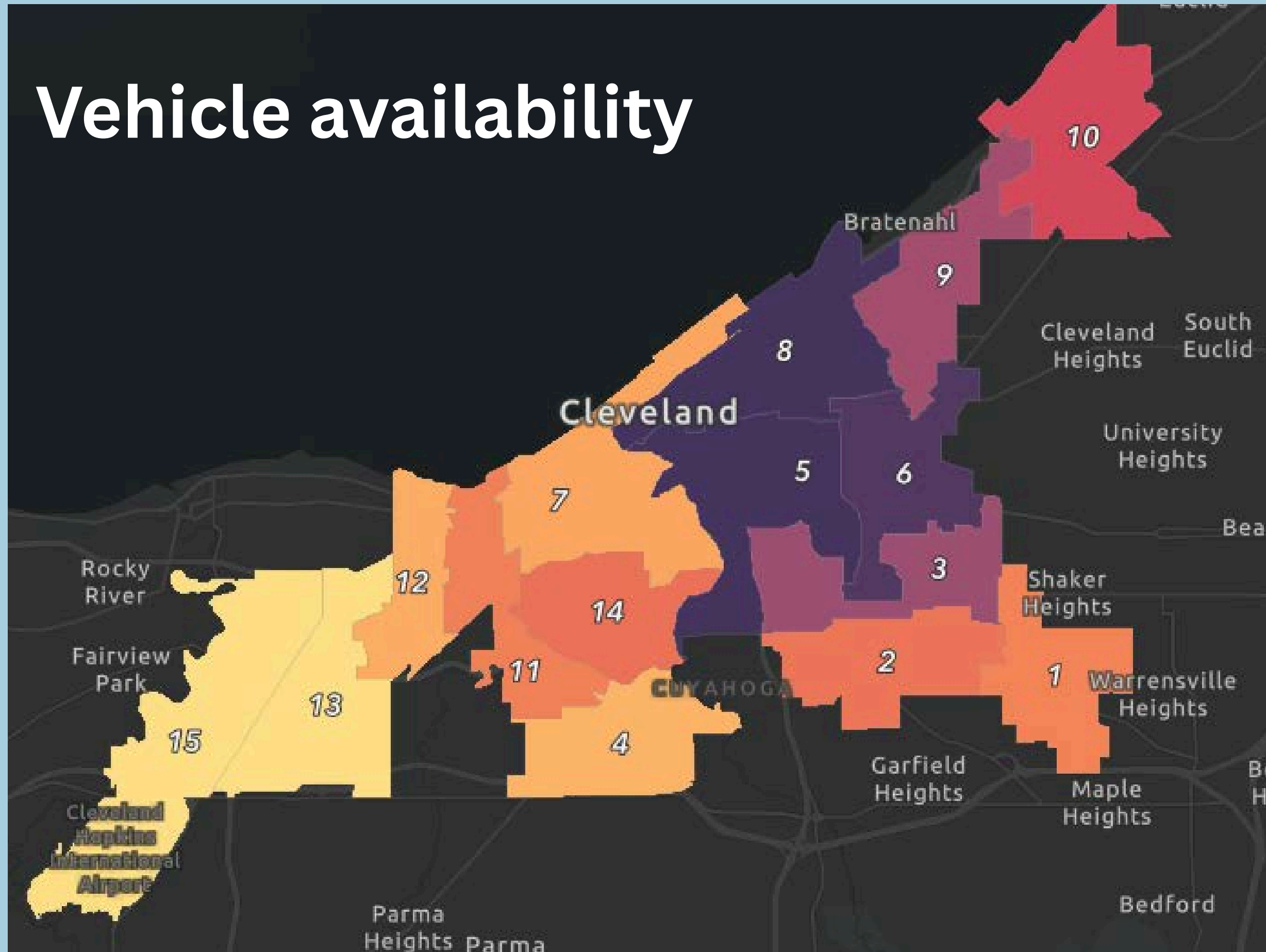
Everyone can access their needs.

Cleveland Health Survey

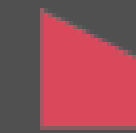
Unreliable transportation has kept residents from their medical appointments, work, and/or getting the things they needed in the last year.

1	3,843 (22.2%)	9	6,710 (38.9%)
2	3,999 (23.4%)	10	4,423 (17.6%)
3	3,416 (16.5%)	11	4,232 (17.4%)
4	2,963 (16.1%)	12	4,807 (21.8%)
5	6,176 (28.4%)	13	4,843 (20.2%)
6	2,753 (15.7%)	14	3,460 (17.8%)
7	3,882 (14.8%)	15	1,132 (4.8%)
8	4,574 (21.6%)	61,213 Clevelanders	

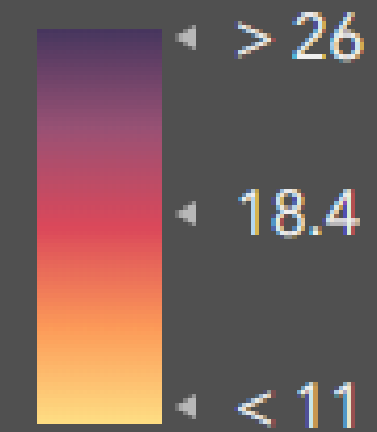
Vehicle availability

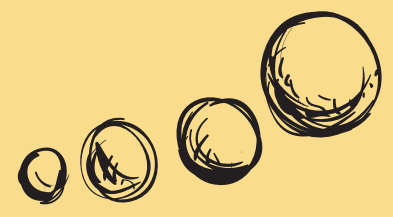


Vehicle Availability



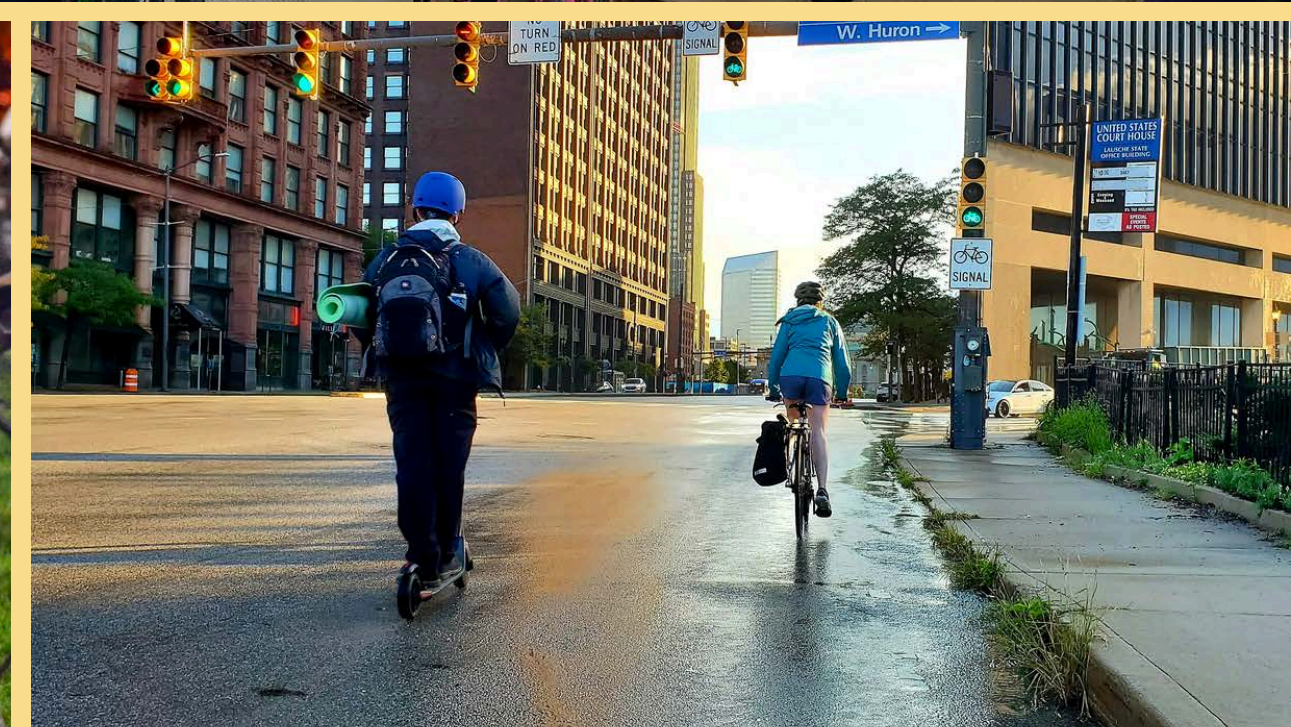
Percent of Households with no vehicle available

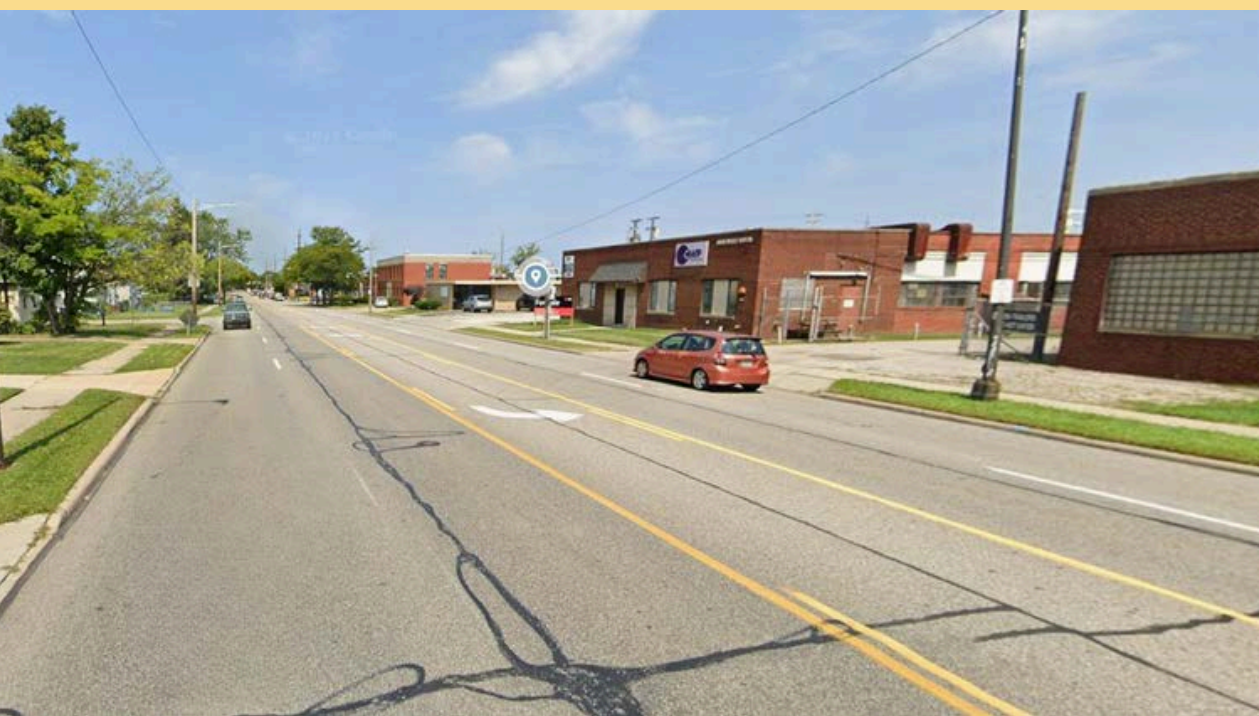
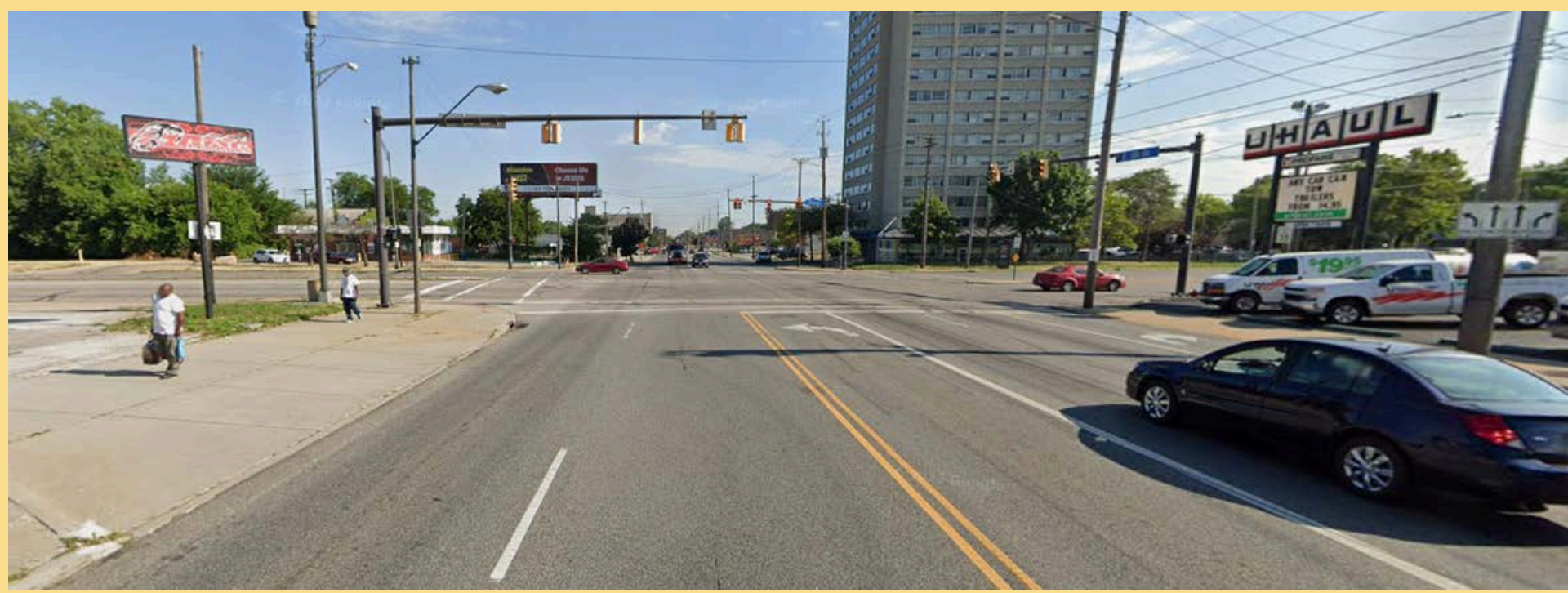
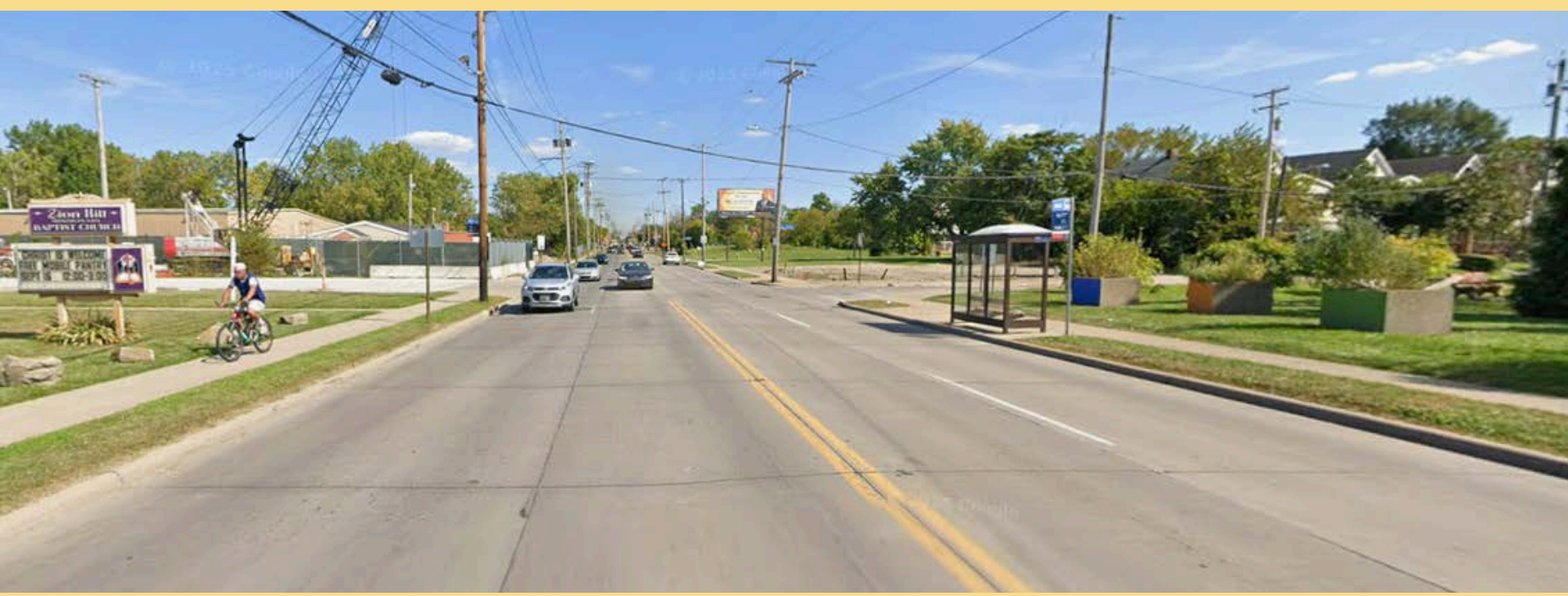


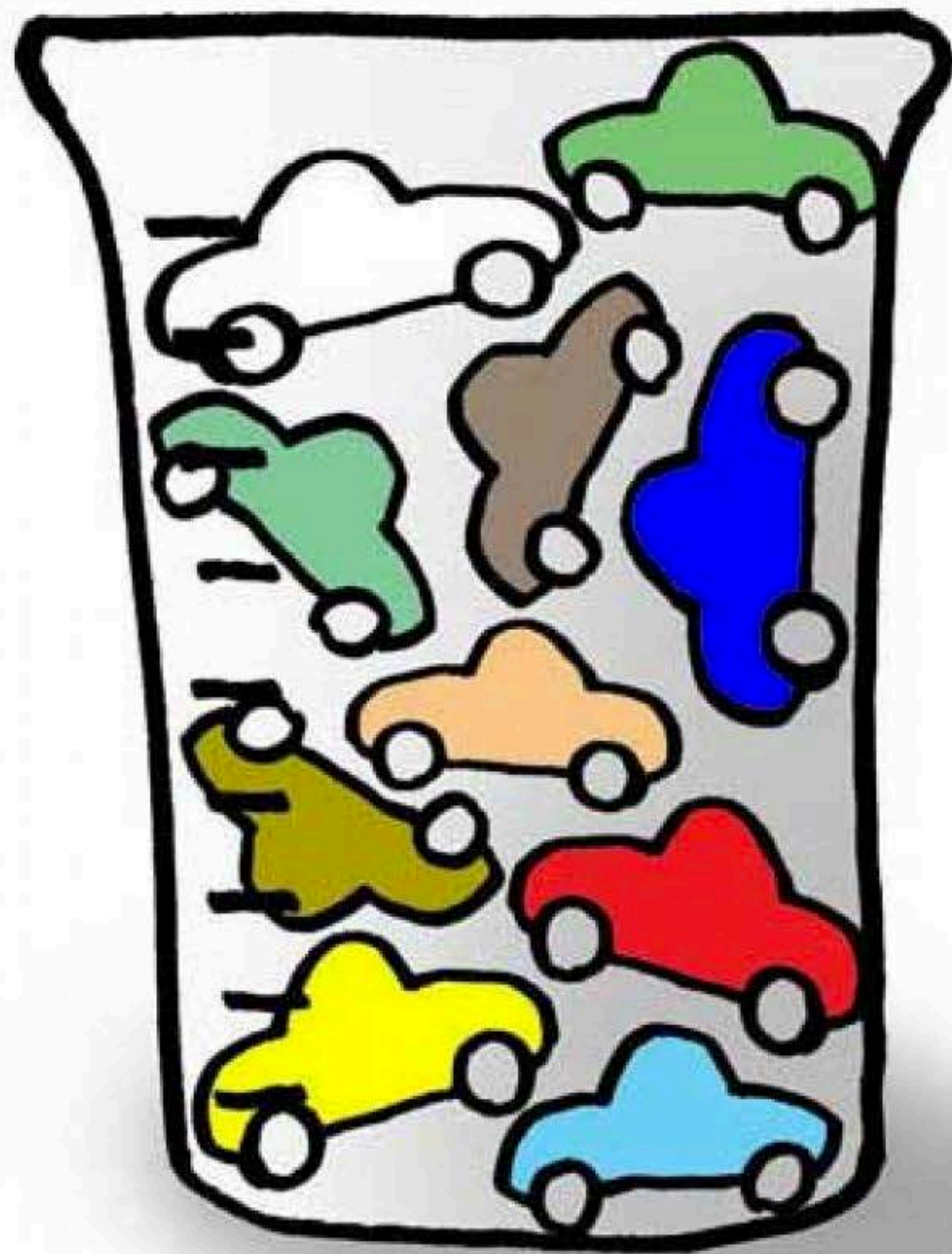




The bicycle is a great form of transportation!







"Capacity" of a Street

Lockwood