

vocon.

cleveland.
3142 Prospect Ave.
Cleveland, OH 44115
216.588.8800

new york.
366 Madison Ave, Floor 10
New York, NY 10017
646.865.1200

I hereby certify that the drawings, specifications, and reports were prepared by me or under my direct supervision and that I am a duly Licensed Professional Engineer in the State of Ohio. My license number is 102826. I am a member of the Ohio Society of Professional Engineers (OSPE) and the American Society of Professional Engineers (ASPE).

Drawn: M.J. [unclear]
Checked: John C. [unclear]
Professional Engineer Number: [unclear]
Expiration Date: 03/31/21

**PROPOSED TENANT
IMPROVEMENTS FOR:
KEY TOWER LOBBY**

127 Public Square, Cleveland,
OH 44114

DRAWING ISSUE:

NO. DATE DESCRIPTION

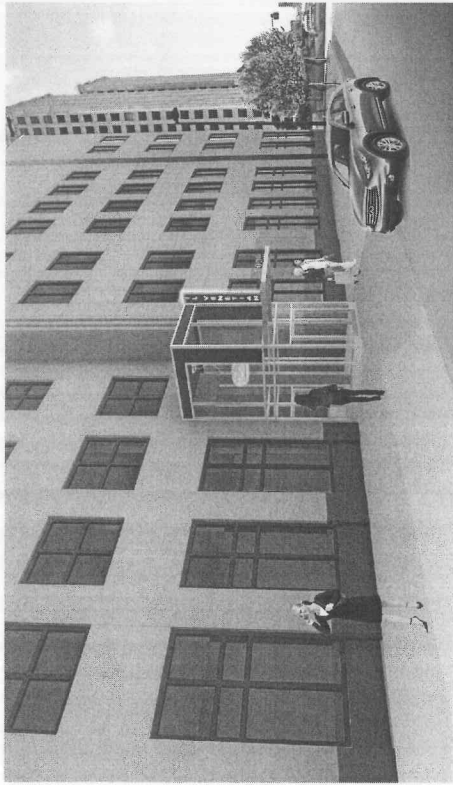
BY: [unclear] BIM Coordinator
DRAWN BY: [unclear] Author
CHECKED BY: [unclear] Checker
JOB NUMBER: 1902826056

DATE PLOTTED: 06/06/17
SUSTAINABILITY: CERTIFICATION: NONE
SHEET TITLE:

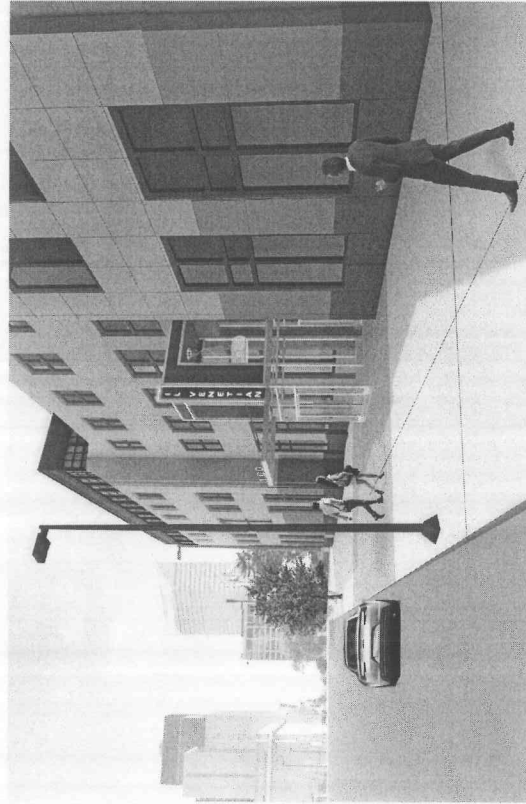
**ENCROACHMENT
PERMIT - ENLARGED
PLANS**

SHEET NUMBER

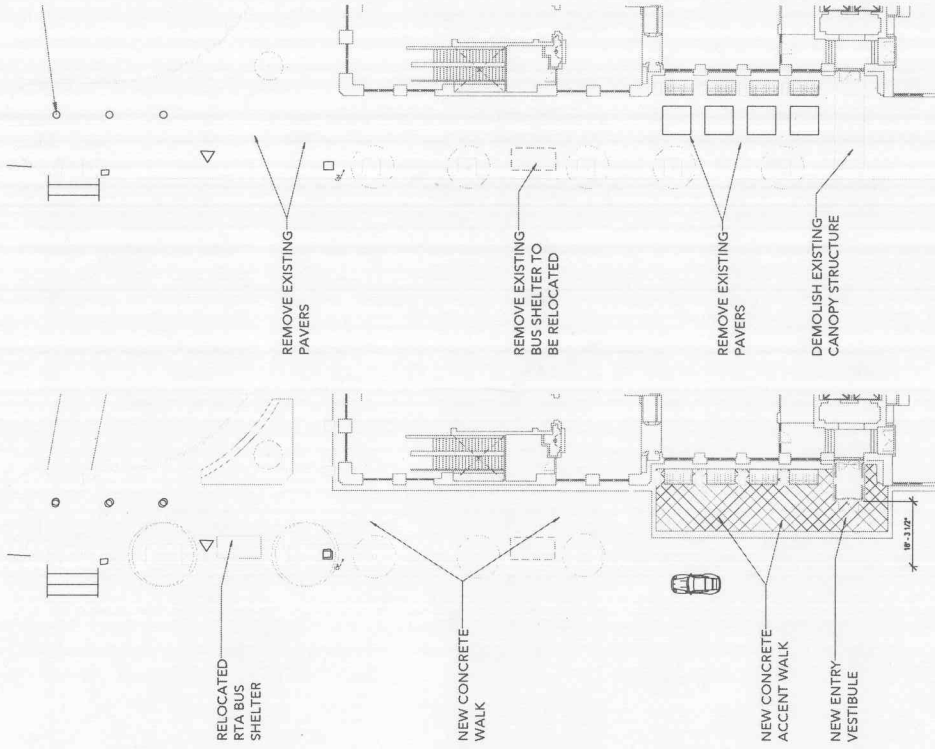
EP-2



4 RENDERING - SOUTH
SCALE: 1/2" = 1'-0"



3 RENDERING - NORTH
SCALE: 1/2" = 1'-0"



2 ENLARGED PROPOSED SITE PLAN
SCALE: 1/8" = 1'-0"

1 ENLARGED DEMOLITION SITE PLAN
SCALE: 1/8" = 1'-0"