

Curve Table						
Curve #	Length	Radius	Tan	Delta	Chord	Bearing
C1	23.63'	15.00'	15.07'	090° 16' 19"	21.26'	S 46° 05' 48" E
C2	23.09'	15.00'	14.54'	088° 11' 56"	20.88'	N 44° 40' 04" E
C3	24.03'	15.00'	15.48'	091° 48' 04"	21.54'	N 45° 19' 56" W
C4	23.49'	15.00'	14.93'	089° 43' 41"	21.16'	S 43° 54' 12" W
C5	23.09'	15.00'	14.54'	088° 11' 56"	20.88'	S 44° 40' 04" W
C6	24.03'	15.00'	15.48'	091° 48' 04"	21.54'	S 45° 19' 56" E
C7	23.43'	15.00'	14.87'	089° 30' 25"	21.12'	N 44° 00' 50" E
C8	23.69'	15.00'	15.13'	090° 29' 35"	21.30'	N 45° 59' 10" W

## RIGHT OF WAY TABLE

### WITHIN HUDSON AVENUE

P.P.N. 121-19-069	-	0.0380 Acres	1,654 Sq.Ft.
P.P.N. 121-19-070	-	0.1313 Acres	5,718 Sq.Ft.
P.P.N. 121-19-071	-	0.0324 Acres	1,410 Sq.Ft.
P.P.N. 121-19-078	-	0.0012 Acres	50 Sq.Ft.
P.P.N. 121-19-079	-	0.0612 Acres	2,664 Sq.Ft.
P.P.N. 121-19-080	-	0.0616 Acres	2,682 Sq.Ft.
P.P.N. 121-19-081	-	0.0023 Acres	98 Sq.Ft.

P.P.N. 121-19-159	-	0.0351 Acres	1,531 Sq.Ft.
P.P.N. 121-19-109	-	0.0737 Acres	3,209 Sq.Ft.
P.P.N. 121-19-110	-	0.0665 Acres	2,896 Sq.Ft.
P.P.N. 121-19-111	-	0.0006 Acres	28 Sq.Ft.
P.P.N. 121-19-118	-	0.1055 Acres	4,597 Sq.Ft.
P.P.N. 121-19-117	-	0.0291 Acres	1,268 Sq.Ft.

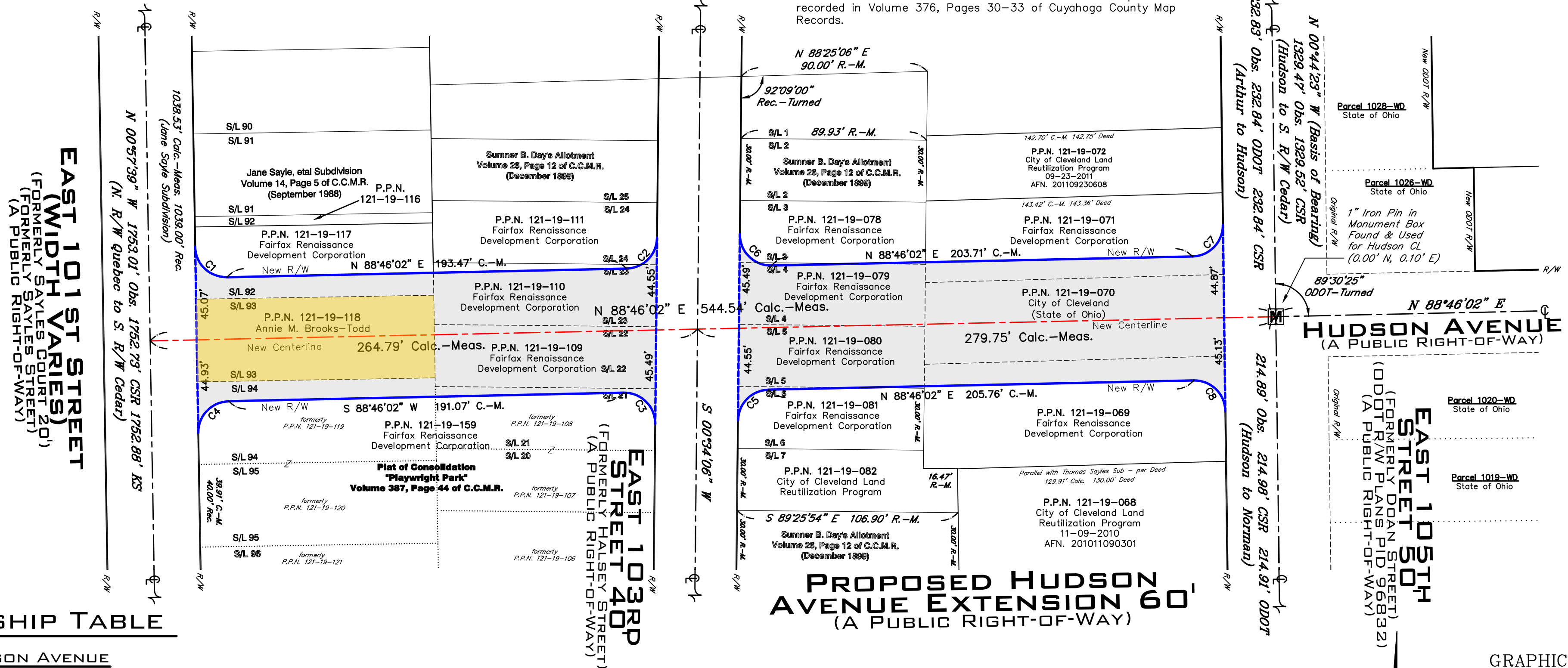
# PROPOSED HUDSON AVENUE EXTENSION

## OF INNOVATION SQUARE CITY OF CLEVELAND, OHIO

### RIGHT OF WAY

### BASIS OF BEARINGS

The centerline of East 105th Street as North 00°44'23" West in the East 105th Street Centerline Plat as shown on the plat recorded in Volume 376, Pages 30-33 of Cuyahoga County Map Records.



### OWNERSHIP TABLE

#### WITHIN HUDSON AVENUE

P.P.N. 121-19-159 (Playwright Park)  
Land conveyed to Fairfax Renaissance Development Corporation by deed dated April 18, 2017 and recorded in AFN. 201704180362 of Cuyahoga County Records.

**P.P.N. 121-19-118**  
Land conveyed to Annie M. Brooks-Todd by deed dated March 4, 2019 and recorded in AFN. 201903040417 of Cuyahoga County Deed Records.

P.P.N. 121-19-109  
Land conveyed to Fairfax Renaissance Development Corporation by deed dated November 3, 2014 and recorded in AFN. 201411030489 of Cuyahoga County Deed Records.

P.P.N. 121-19-110  
Land conveyed to Fairfax Renaissance Development Corporation by deed dated March 15, 2019 and recorded in AFN. 201903150638 of Cuyahoga County Deed Records.

P.P.N. 121-19-111  
Land conveyed to Fairfax Renaissance Development Corporation by deed dated February 21, 2019 and recorded in AFN. 201902210051 of Cuyahoga County Deed Records.

P.P.N. 121-19-079  
Land conveyed to Fairfax Renaissance Development Corporation by deed dated February 21, 2019 and recorded in AFN. 201902210051 of Cuyahoga County Deed Records.

P.P.N. 121-19-078  
Land conveyed to Fairfax Renaissance Development Corporation by deed dated August 22, 2018 and recorded in AFN. 201808220339 of Cuyahoga County Deed Records.

P.P.N. 121-19-080  
Land conveyed to Fairfax Renaissance Development Corporation by deed dated February 21, 2019 and recorded in AFN. 201902210051 of Cuyahoga County Deed Records.

P.P.N. 121-19-081  
Land conveyed to Fairfax Renaissance Development Corporation by deed dated February 21, 2019 and recorded in AFN. 201902210051 of Cuyahoga County Deed Records.

P.P.N. 121-19-069  
Land conveyed to Fairfax Renaissance Development Corporation by deed dated February 21, 2019 and recorded in AFN. 201902210051 of Cuyahoga County Deed Records.

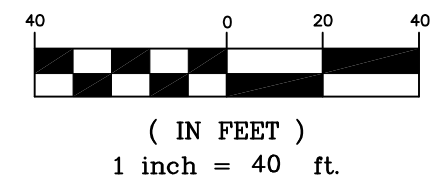
P.P.N. 121-19-070  
Land conveyed to City of Cleveland (State of Ohio Department of Transportation) by deed dated December 20, 2018 and recorded in AFN. 201812200447 of Cuyahoga County Deed Records.

P.P.N. 121-19-071  
Land conveyed to Fairfax Renaissance Development Corporation by deed dated February 21, 2019 and recorded in AFN. 201902210051 of Cuyahoga County Deed Records.

### REFERENCE SURVEYS

- 1.) Sumner B. Day's Allotment, Volume 26, Page 12 of Cuyahoga County Map Records. (Rec.)
- 2.) Jane Sayle, etal Subdivision, Volume 14, Page 5 of Cuyahoga County Map Records. (Rec.)
- 3.) Massey, Mansure & Grant Subdivision, Volume 5, Page 59 of Cuyahoga County Map Records. (Rec.)
- 4.) James Mansure Allotment, Volume 9, Page 5 of Cuyahoga County Map Records. (Rec.)
- 5.) East 105th Street Centerline Plat, Volume 376, Page 30-33 of Cuyahoga County Map Records. (ODOT)
- 6.) City of Cleveland Survey Records. (CSR)

### GRAPHIC SCALE



April 8, 2019

**RIVERSTONE**

LAND SURVEYING - ENGINEERING - DESIGN  
3800 LAKESIDE AVENUE - SUITE 100  
CLEVELAND - OHIO - 44114  
PHONE: (216) 491-2000 FAX: (216) 491-9640  
WWW.RIVERSTONEENGINEERING.COM

18-265 , PAGE 1 OF 1