

# Ordinance No. 613-2024

- Acquire nine parcels from CNP subsidiaries STA Realty and LAND
- Convey seventeen city-owned parcels to CNP subsidiary
- Enter into an Option Agreement with CNP and NVC subsidiary LAND

Property Exchange between City and CNP in UC			
Upper Chester Parcels( CNP/NVC)	Address	Owner	Notes
119-09-002	1819 E 89 St	STA Realty Inc	
119-09-057	1755 E 90 St	LAND Assembly for Neighborhood Dev. LTD.	
119-09-073	9277 Amesbury Ave	STA Realty Inc. Trustee	
119-12-026	10012 Lamont Ave	STA Realty, Inc. Trustee	
119-12-078	9726 Woodward Ave	STA Realty, Inc. Trustee	
119-12-079	9728 Woodward Ave	STA Realty, Inc. Trustee	
119-12-080	9732 Woodward Ave	STA Realty, Inc. Trustee	
119-12-081	9802 Woodward Ave	STA Realty, Inc. Trustee	
119-12-085 (Frontline Development)	10000 Woodward Ave	Frontline Development Group, LLC	Transferred from STA Realty, Inc 3-8-24
119-12-098	Woodward Ave	STA Realty, Inc. Trustee	
<b>Requested City of Cleveland Parcels</b>			
021-26-059	3303 W 128 St	Land Bank	
021-29-013	3328 W 130 St	Land Bank	
021-29-017	3342 W 130 St	Land Bank	
113-04-015	Devon Rd	Land Bank	
113-04-016	Lakeport Ave	Land Bank	
113-04-021	17653 Lakeport Ave	Land Bank	
113-04-078	Lakeport Ave	Land Bank	
113-04-079	Devon Rd	Land Bank	
113-04-080	Lakeport Ave	Land Bank	
113-07-035	18106 Marcella Rd	Land Bank	
113-25-007	17316-17318 Lake Shore Blvd	Land Bank	
113-25-008	17300 Lakeshore Blvd	City of Cleveland	Not in the land bank
114-03-135	18020 Schenely Ave	Land Bank	
114-09-052	18320 Hiller Ave	Land Bank	
114-11-073	18216 Canterbury Rd	Land Bank	
114-20-099	19102 Shawnee Ave	Land Bank	
114-21-134	19508 Mohican Ave	Land Bank	

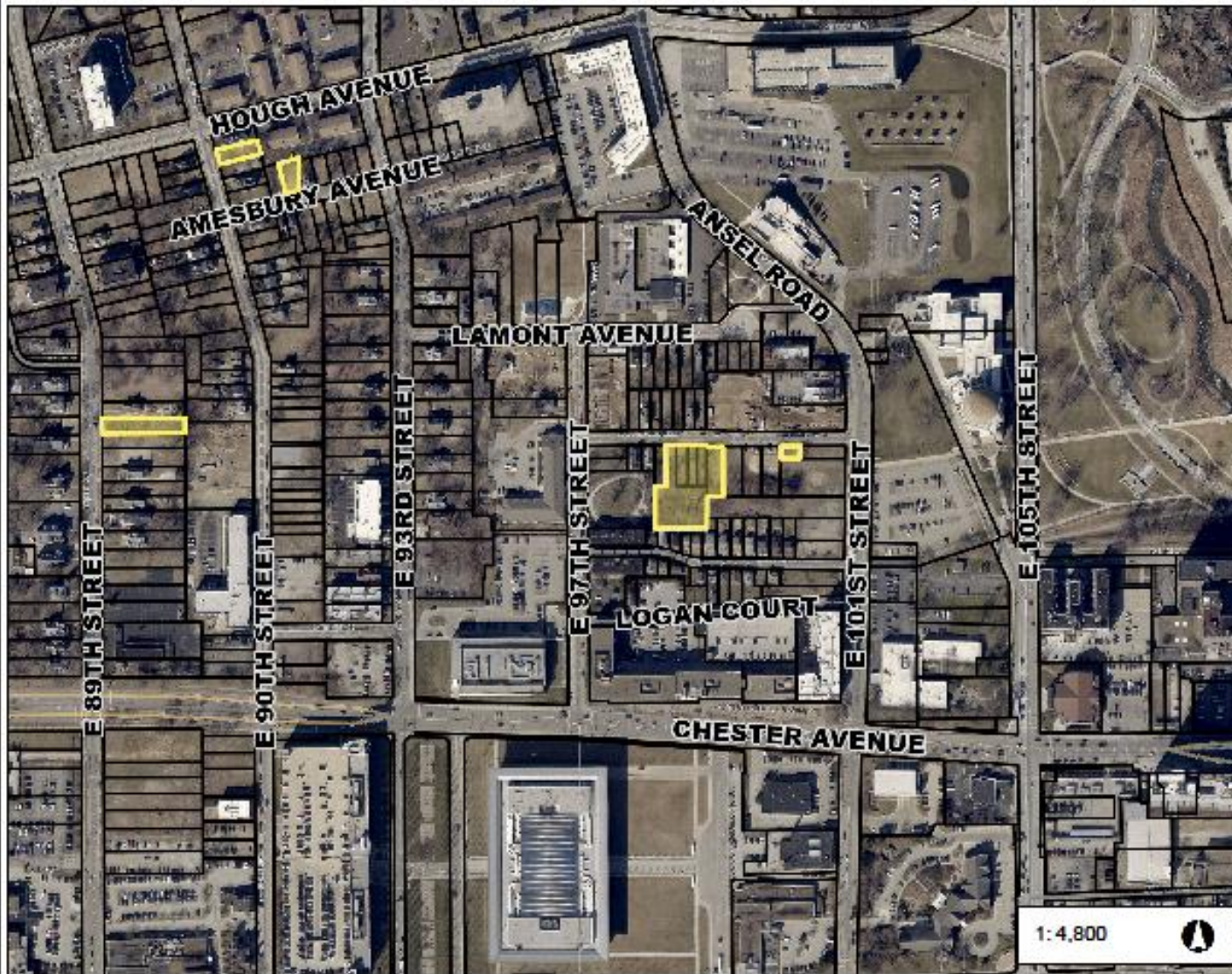
**Property Exchange between City and CNP in UC**

<b>Upper Chester Parcels( CNP/NVC)</b>	<b>Address</b>	<b>Owner</b>	<b>Notes</b>
119-09-002	1819 E 89 St	STA Realty Inc	
119-09-057	1755 E 90 St	LAND Assembly for Neighborhood Dev. LTD.	
119-09-073	9277 Amesbury Ave	STA Realty Inc. Trustee	
119-12-026	10012 Lamont Ave	STA Realty, Inc. Trustee	
119-12-078	9726 Woodward Ave	STA Realty, Inc. Trustee	
119-12-079	9728 Woodward Ave	STA Realty, Inc. Trustee	
119-12-080	9732 Woodward Ave	STA Realty, Inc. Trustee	
119-12-081	9802 Woodward Ave	STA Realty, Inc. Trustee	
119-12-085 (Frontline Development)	10000 Woodward Ave	Frontline Development Group, LLC	Transferred from STA Realty, Inc 3-8-24
119-12-098	Woodward Ave	STA Realty, Inc. Trustee	

<b>Requested City of Cleveland Parcels</b>			
021-26-059	3303 W 128 St	Land Bank	
021-27-143	3356 W 127 St	Land Bank	Exchanged for PPN 113-07-035
021-29-013	3328 W 130 St	Land Bank	
021-29-017	3342 W 130 St	Land Bank	
113-04-015	Devon Rd	Land Bank	
113-04-016	Lakeport Ave	Land Bank	
113-04-021	17653 Lakeport Ave	Land Bank	
113-04-078	Lakeport Ave	Land Bank	
113-04-079	Devon Rd	Land Bank	
113-04-080	Lakeport Ave	Land Bank	
113-25-007	17316-17318 Lake Shore Blvd	Land Bank	
113-25-008	17300 Lakeshore Blvd	City of Cleveland	Not in the land bank
114-03-135	18020 Schenely Ave	Land Bank	
114-09-052	18320 Hiller Ave	Land Bank	
114-11-073	18216 Canterbury Rd	Land Bank	
114-20-099	19102 Shawnee Ave	Land Bank	
114-21-134	19508 Mohican Ave	Land Bank	



# Upper Chester STA Parcels



Date Created: 6/28/2023

### Legend

- Municipalities
- Platted Centerline
- Parcel

1:4,800



800 0 400 800 Feet

Projection:  
WGS\_1984\_Web\_Mercator\_Auxiliary\_Sphere

This map is a user generated static output from an internet mapping site and is for reference only. Data layers that appear on this map may or may not be accurate, current, or otherwise reliable.

THIS MAP IS NOT TO BE USED FOR NAVIGATION

Cuyahoga County  
**Enterprise GIS**  
FOR USE BY THE PUBLIC

# CNP- CD Parcel Swap - Upper Chester PPN 119-12-026



# CNP - CD Parcel Swap - Jefferson SPA



# CNP - CD Parcel Swap - North Shore Collinwood SPA

