The background is a solid light green color. It is decorated with a pattern of faint, white line-art icons representing various types of food waste. These include an apple, a carrot, an eggplant, a banana, a beet, a chili pepper, a corn cob, a tomato, and a piece of bread. There is also a small icon of a shovel on the left side, partially behind the main title.

FEED PEOPLE, NOT LANDFILLS

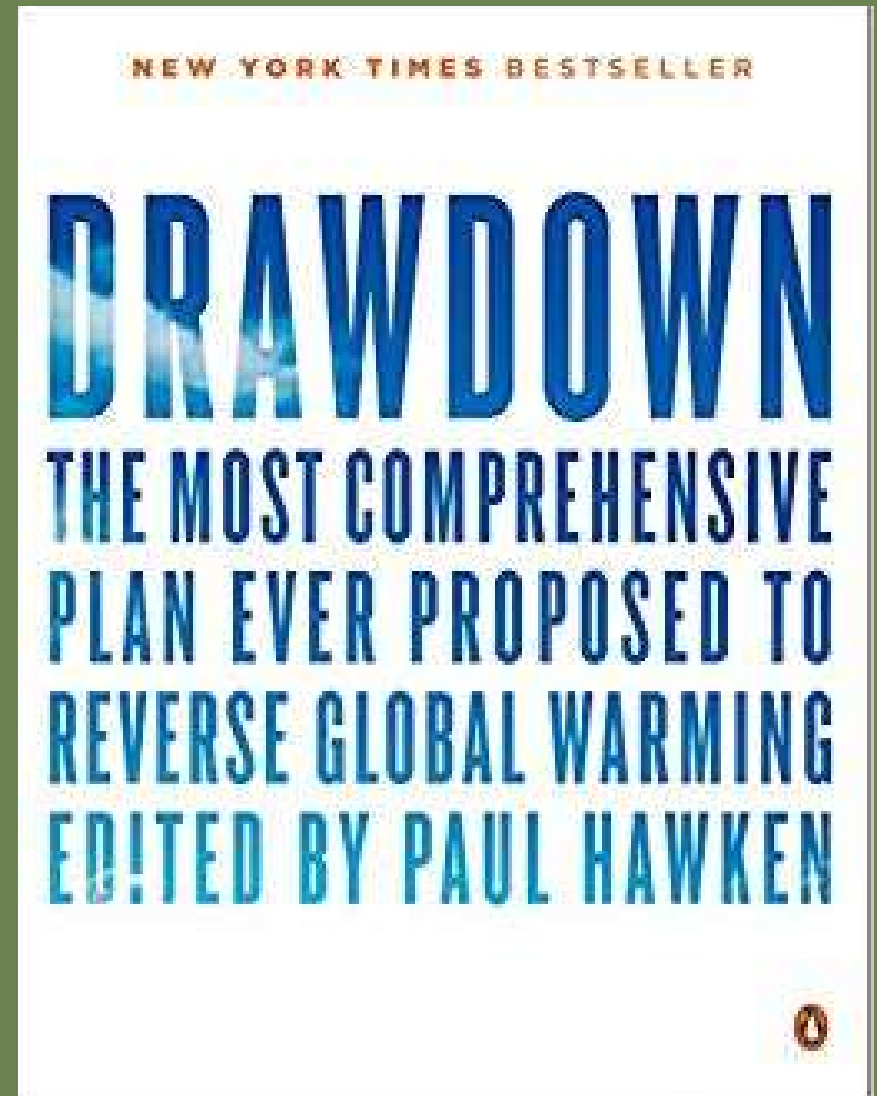
RUST BELT RIDERS

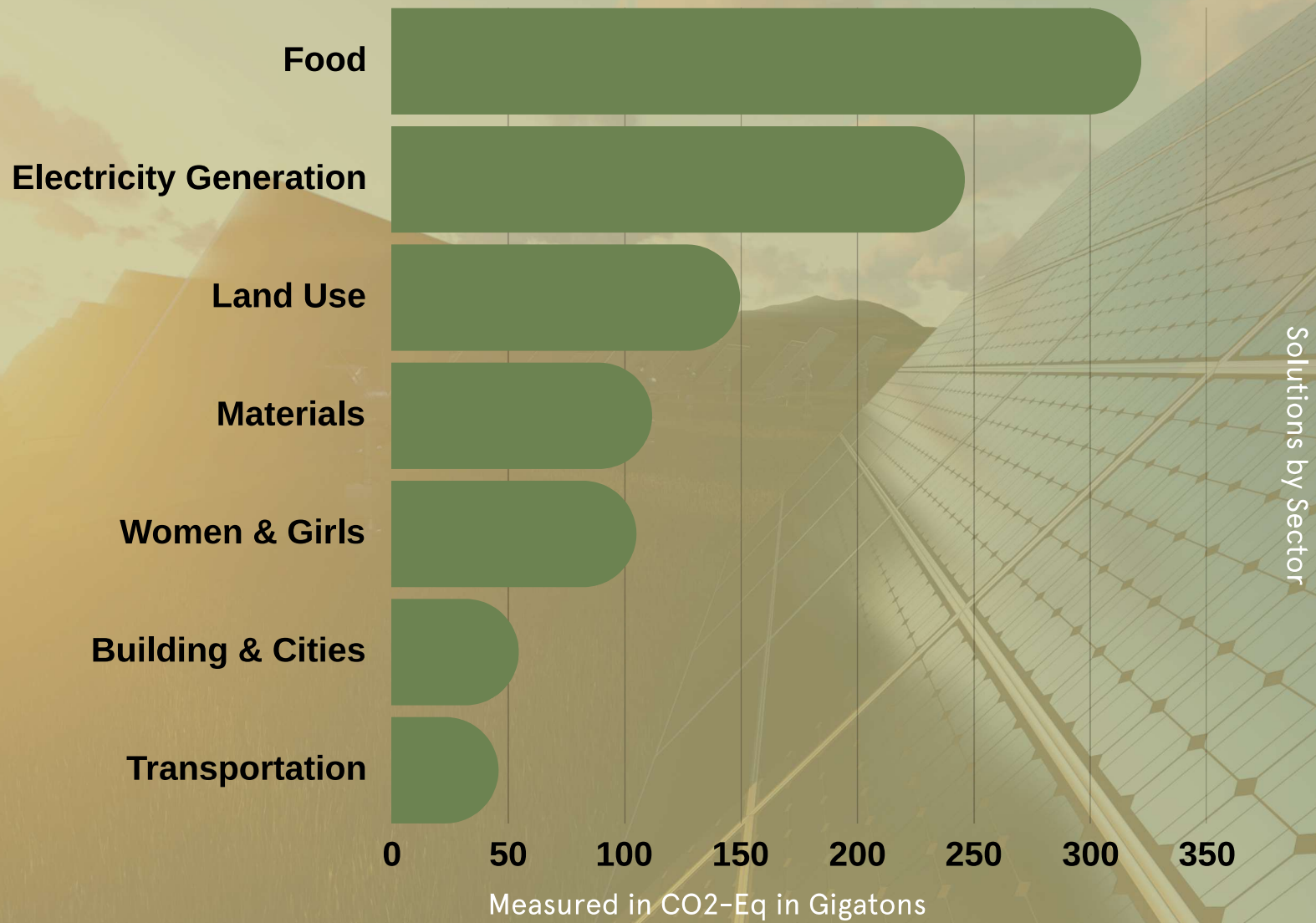
An inconvenient story of food waste

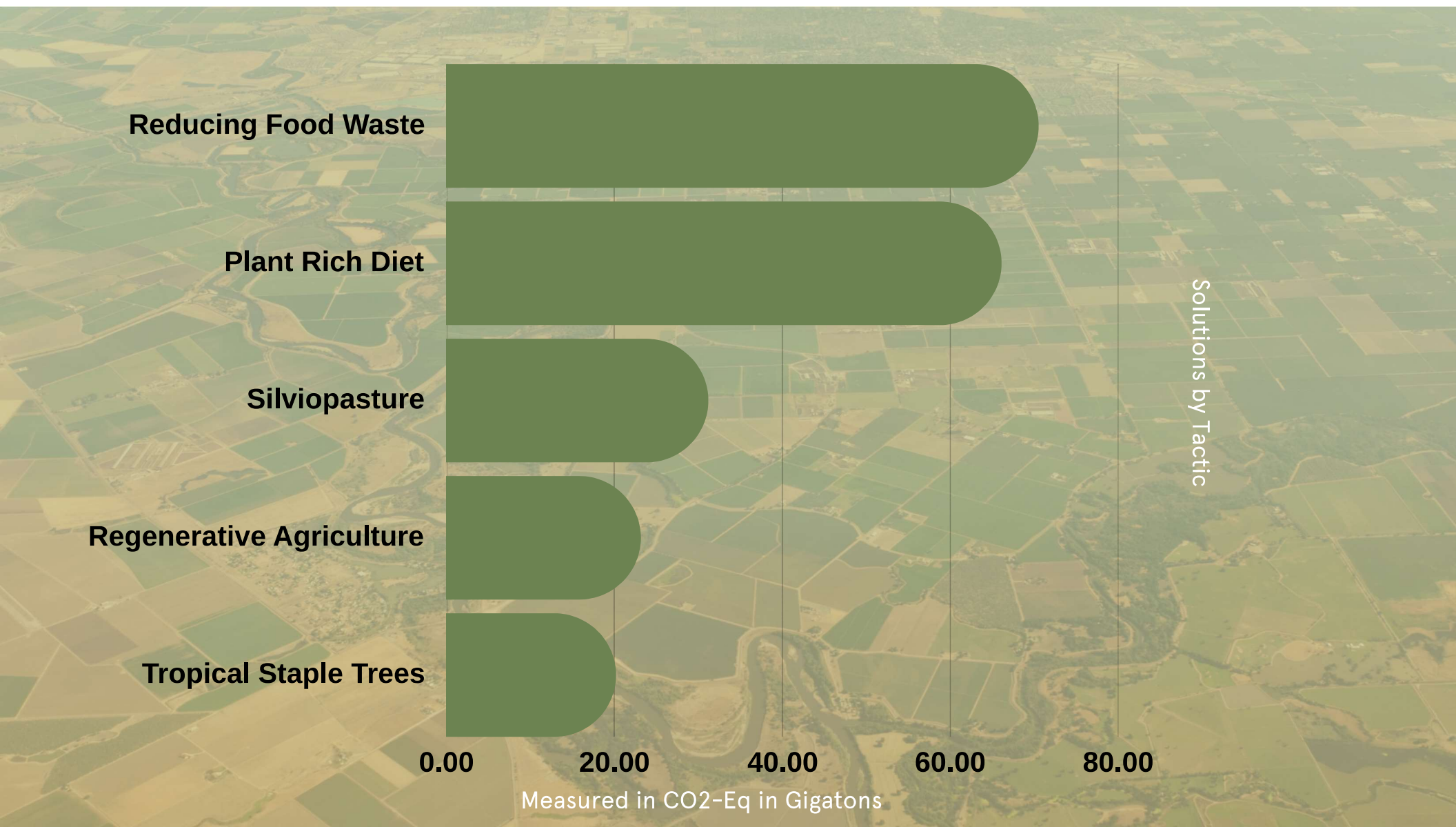
Project Drawdown

PAUL HAWKEN

The Most comprehensive plan ever
proposed to reverse global warming.









40%

OF ALL FOOD IN THE U.S.
IS WASTED

#1

THE SINGLE LARGEST
COMPONENT OF OUR
NATIONS LANDFILLS

Who wastes all of this?



Households
43%



Businesses
40%



Farms
16%

Customized
solutions for any
organization
type.



RUST BELT RIDERS
COMMUNITY SUPPORTED COMPOSTING PROGRAM

DROP-OFF

CONVENIENT COMMUNITY ACCESS

- **\$12 PER MONTH**
- 24/7 ACCESS TO CONVENIENT DROP-OFF LOCATIONS
- DISCOUNTS ON ALL TILTH SOIL PRODUCTS
- ACCESS TO WORKSHOPS + PERKS



RUST BELT RIDERS
COMMUNITY SUPPORTED COMPOSTING PROGRAM

DROP-OFF

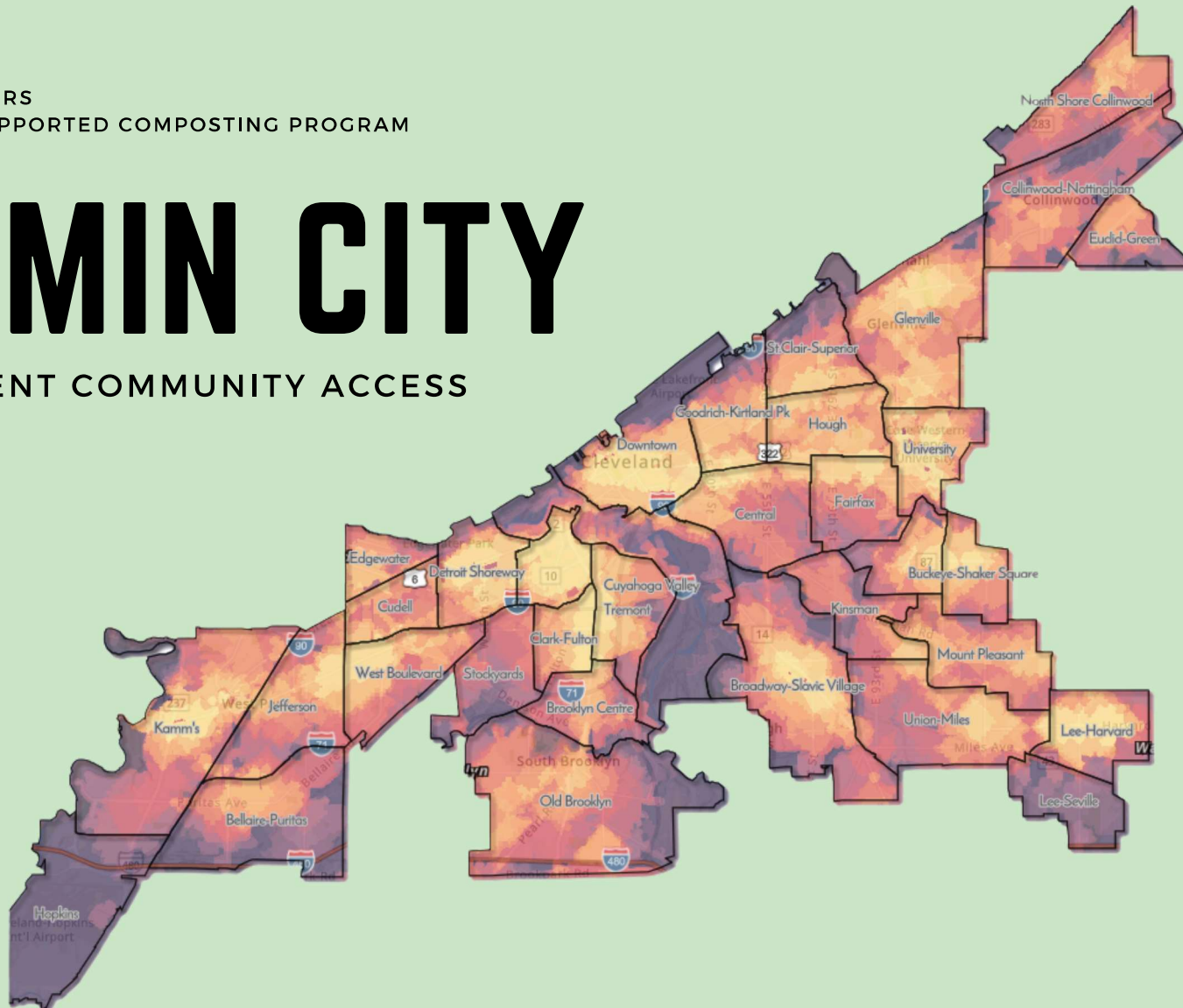
CONVENIENT COMMUNITY ACCESS - 35 LOCATIONS AND GROWING



RUST BELT RIDERS
COMMUNITY SUPPORTED COMPOSTING PROGRAM

15-MIN CITY

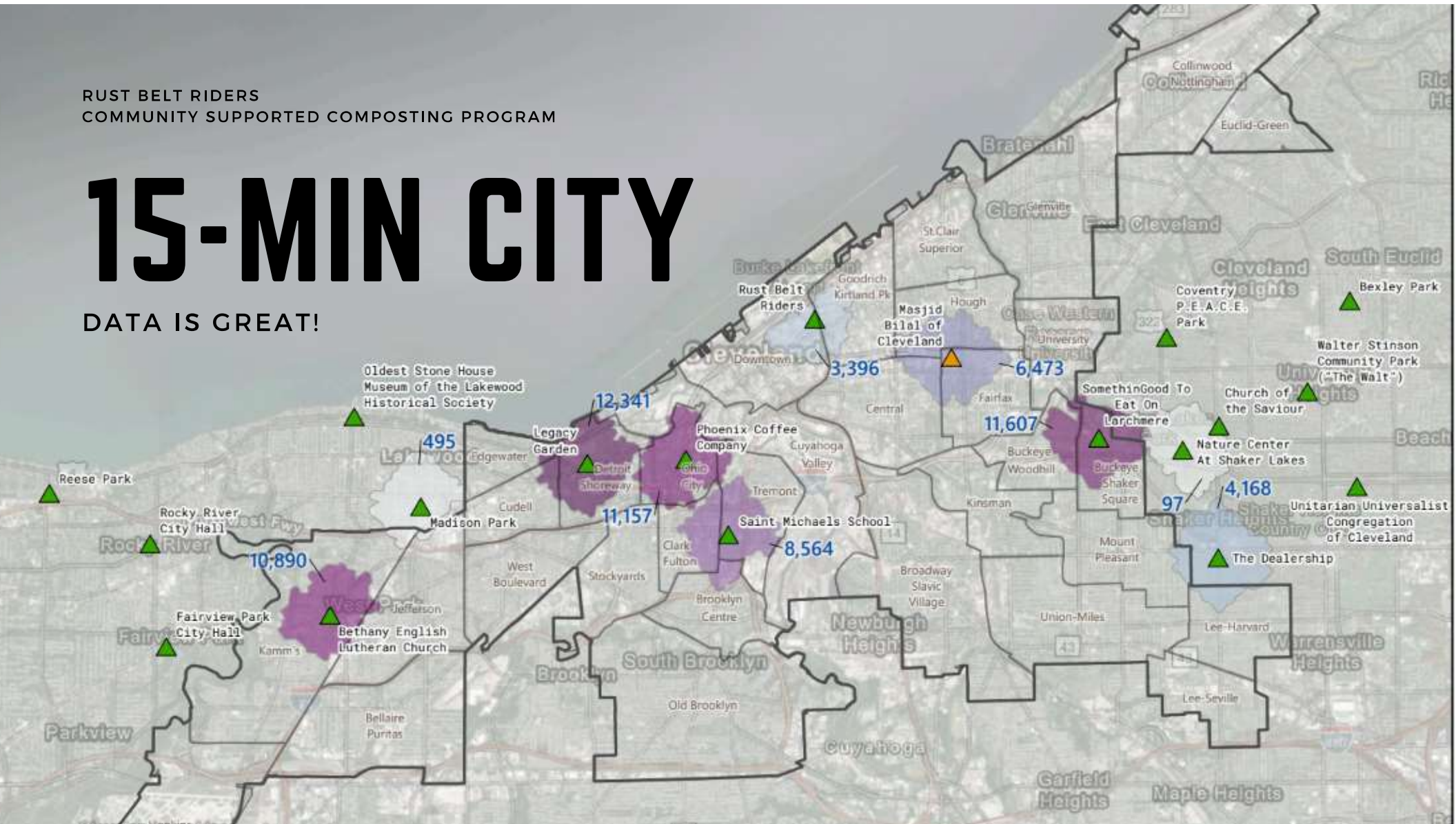
CONVENIENT COMMUNITY ACCESS



RUST BELT RIDERS
COMMUNITY SUPPORTED COMPOSTING PROGRAM

15-MIN CITY

DATA IS GREAT!



tilth.



made from
food scraps



made in
Cleveland



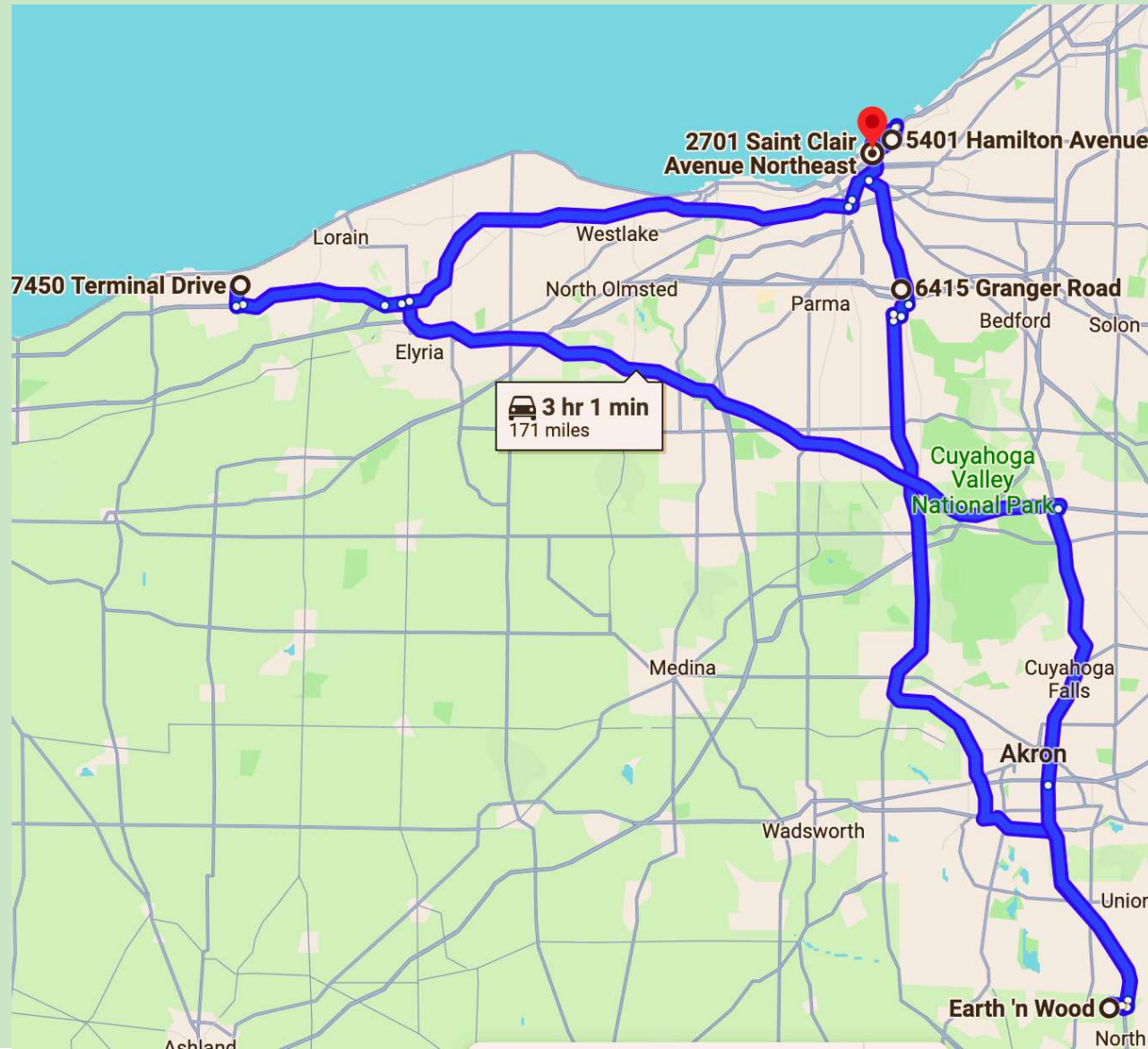
made by
Rust Belt Riders

RUST BELT RIDERS
REGIONAL COMPOSTING INFRASTRUCTURE

WASTEFUL

(AND VERY EXPENSIVE)

- **\$19/TON**
 - TO DROP MATERIAL IN INDEPENDENCE
- **\$335/TRIP**
 - TO TRANSPORT MATERIAL FROM INDEPENDENCE TO N. CANTON
- **\$512/TRIP**
 - TO TRANSPORT FINISHED COMPOST FROM N. CANTON TO LORAIN.
- **\$50/YARD**
 - THE COST TO CURRENTLY PRODUCE A CUBIC YARD OF COMPOST



tilth.



2023 Site



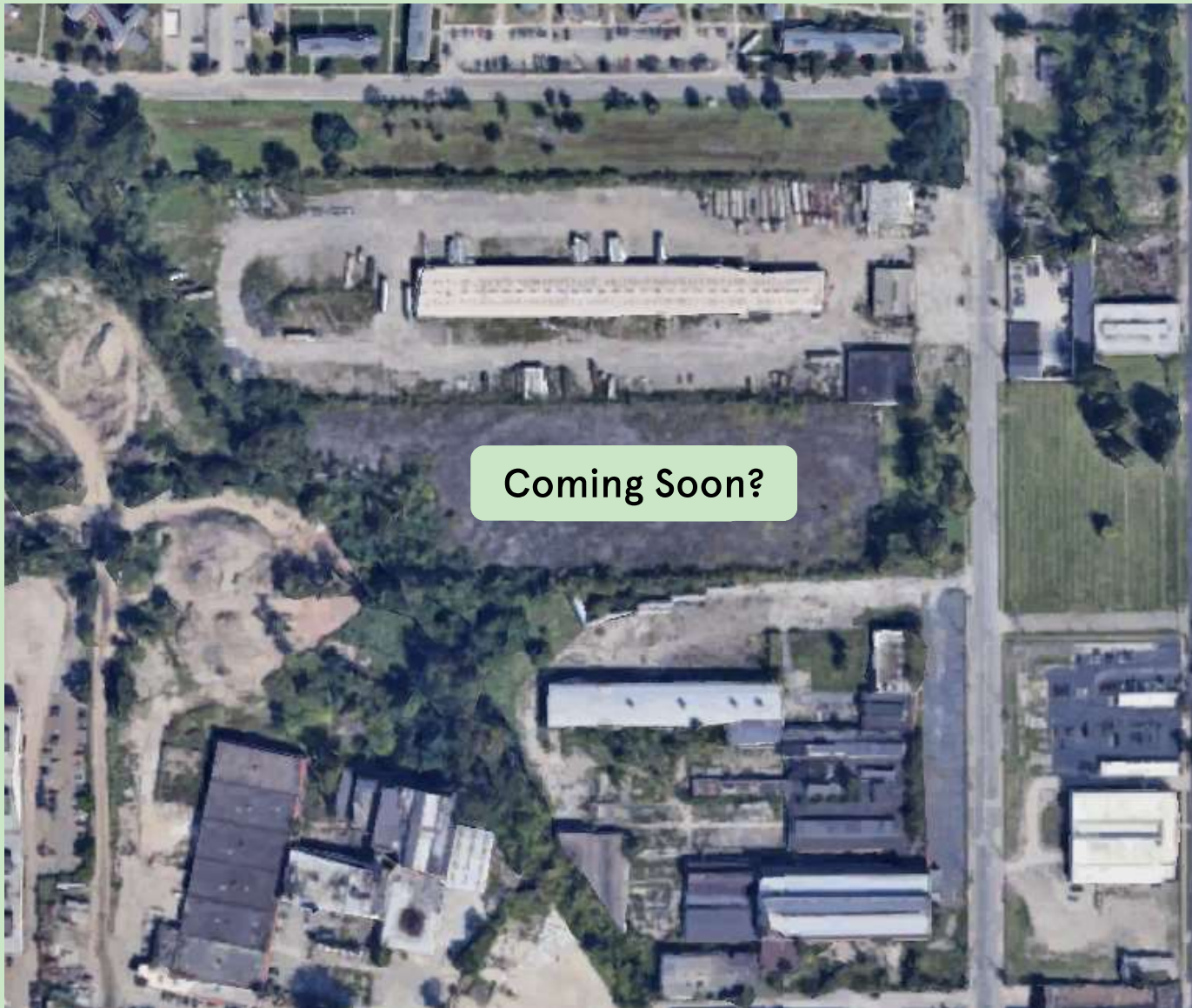
made from
food scraps



made in
Cleveland



made by
Rust Belt Riders



Coming Soon?

ASSETS TO WORK

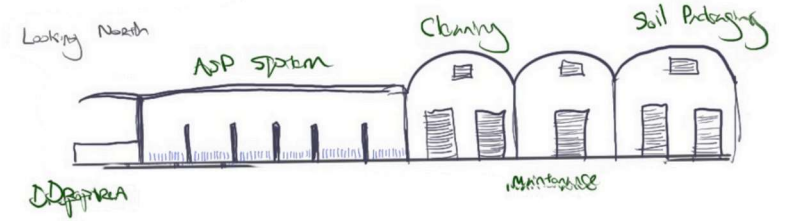
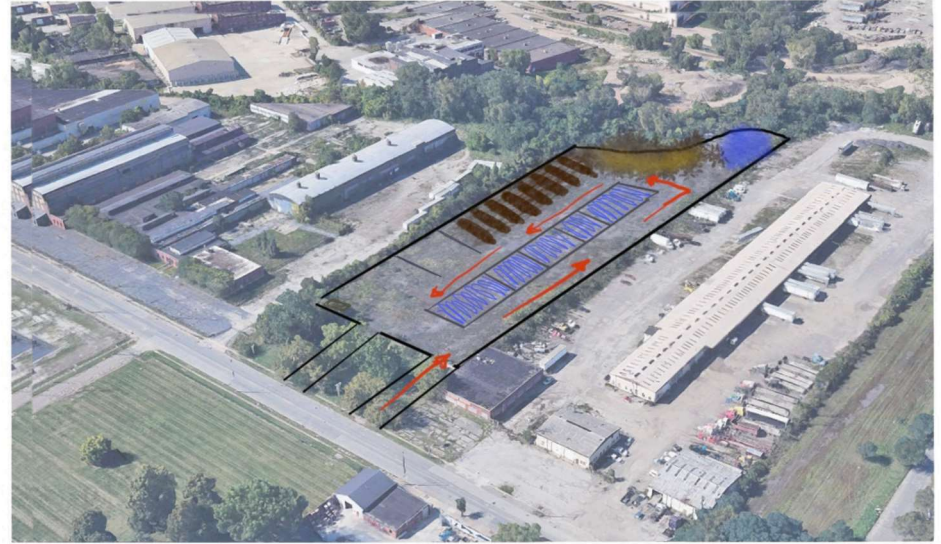
BUILDING ON HISTORY

- **FORMER PUBLIC WORKS FACILITY**
 - SITE HAS BEEN VACANT FOR UPWARDS OF 30 YEARS.
 - FORMER TRANSFER STATION.
- **PROXIMITY TO ELDERS**
 - LESS THAN ONE MILE AWAY FROM RID-ALL AND THE URBAN AGRICULTURE INNOVATION ZONE.
 - STRENGTHEN PARTNERSHIPS
- **POSITIONED FOR GROWTH**
 - ZONED LIGHT-INDUSTRIAL.
 - MEETS SET BACK REQUIREMENTS FOR CLASS II FACILITY.



tilth.





tilth.

tilth.



tilth.





tilth.

HIGHLIGHTS

- 2018: University of Kentucky names “Sprout” one of the best organic seed starting mixes in the U.S.
 - 2019: Best Small Scale Composter in the US by US Composting Council.
 - 2022: Nathan Rutz appointed to Ohio Organics Council
 - 2023: Nathan Rutz becomes second person in Ohio to complete Compost Facility Operators Training program.
 - 2024: Tilth Soil becomes RBR’s largest source of revenue.
-



ADVANCING THE CIRCULAR ECONOMY

Feed People, Not Landfills

www.RustBeltRiders.com

[@RustBeltRiders](https://www.instagram.com/RustBeltRiders)

info@RustBeltRiders.com

www.TilthSoil.com

[@TilthSoil](https://www.instagram.com/TilthSoil)

info@TilthSoil.com