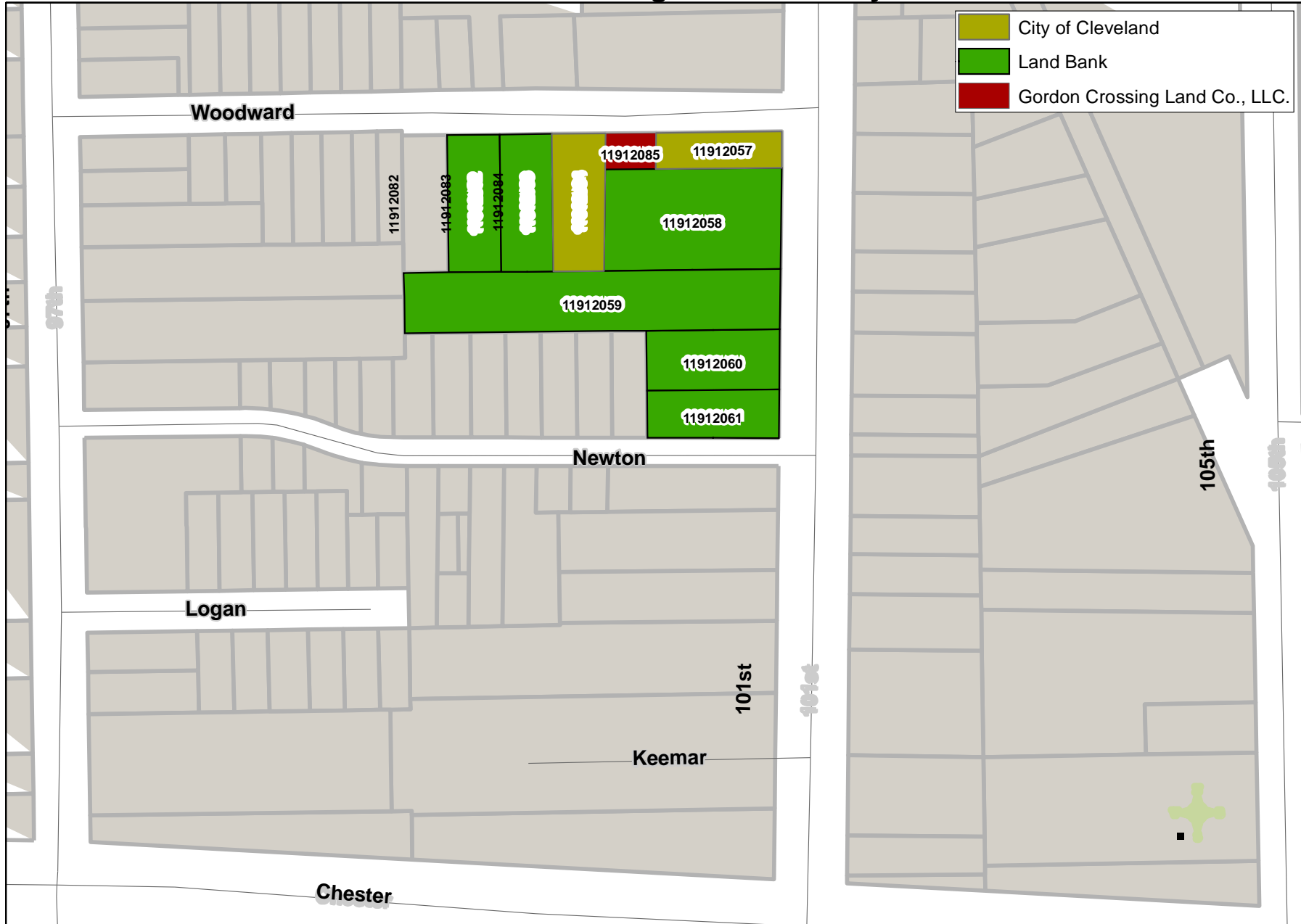
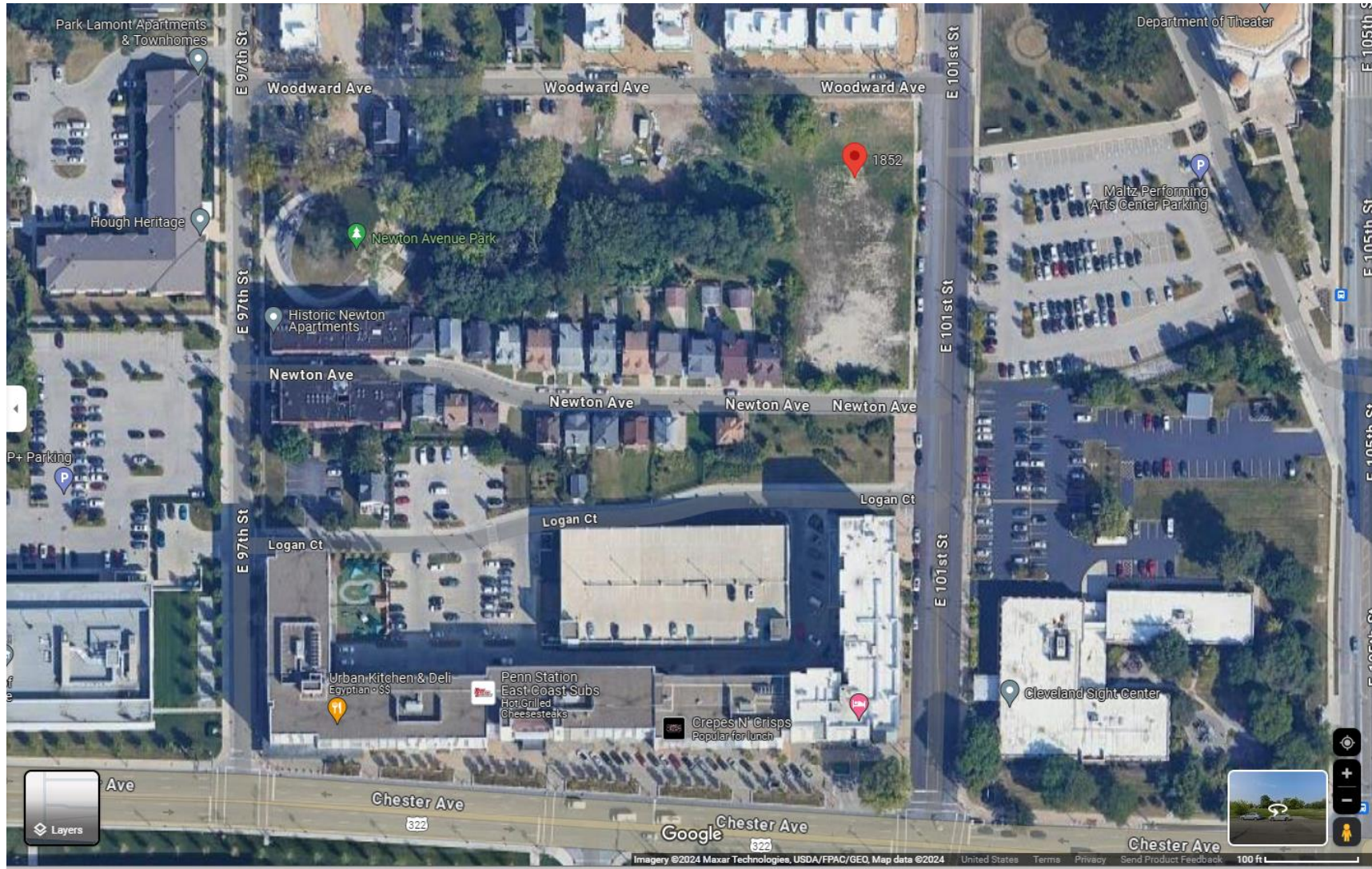


# Gordon Crossing Land Assembly







# Gordon Crossing

Frontline Development Group, LLC &  
Woda Cooper Companies, Inc.







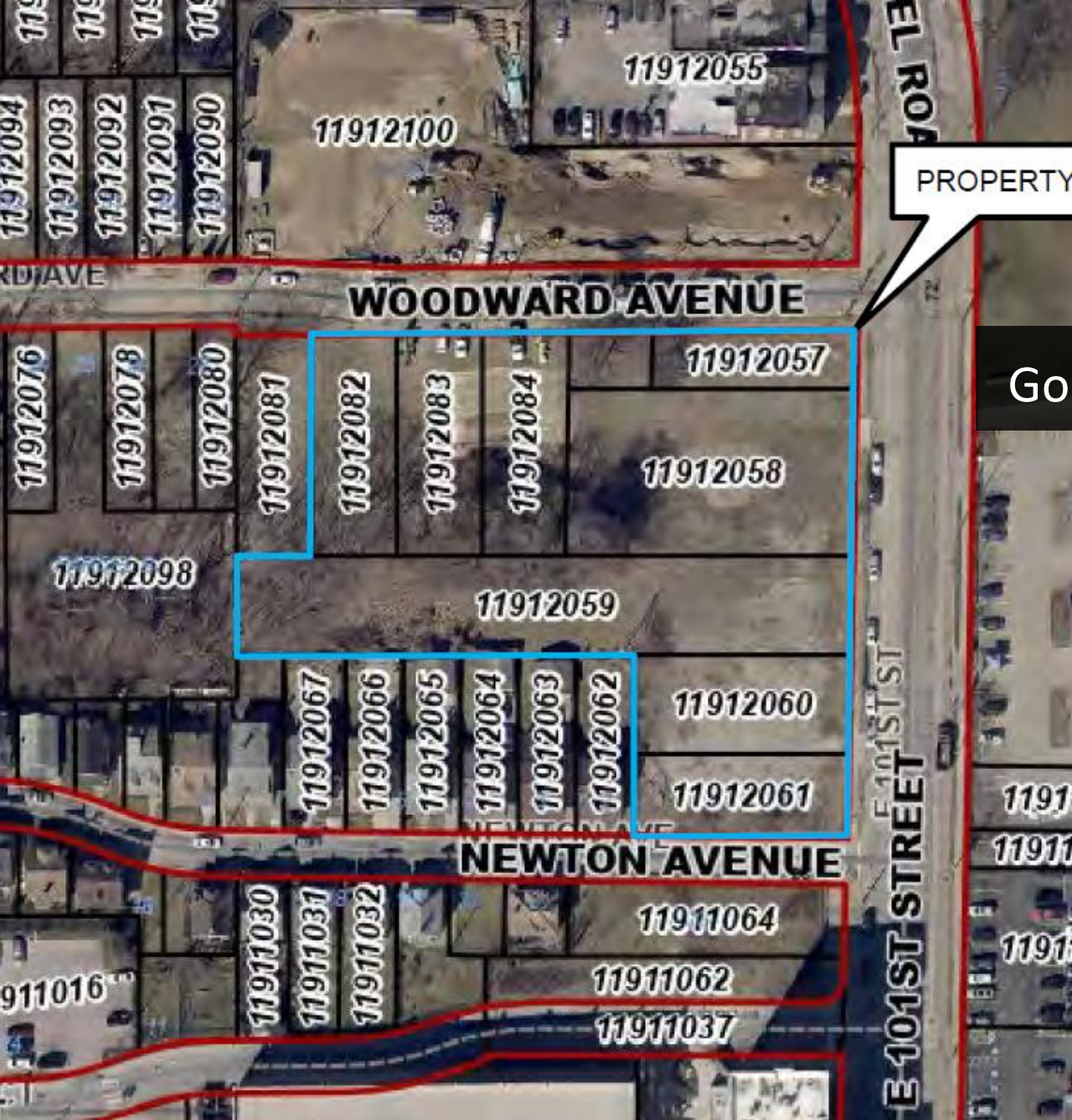
# Gordon Crossing Overview

Providing Mixed Income Housing in the Historic Hough Neighborhood

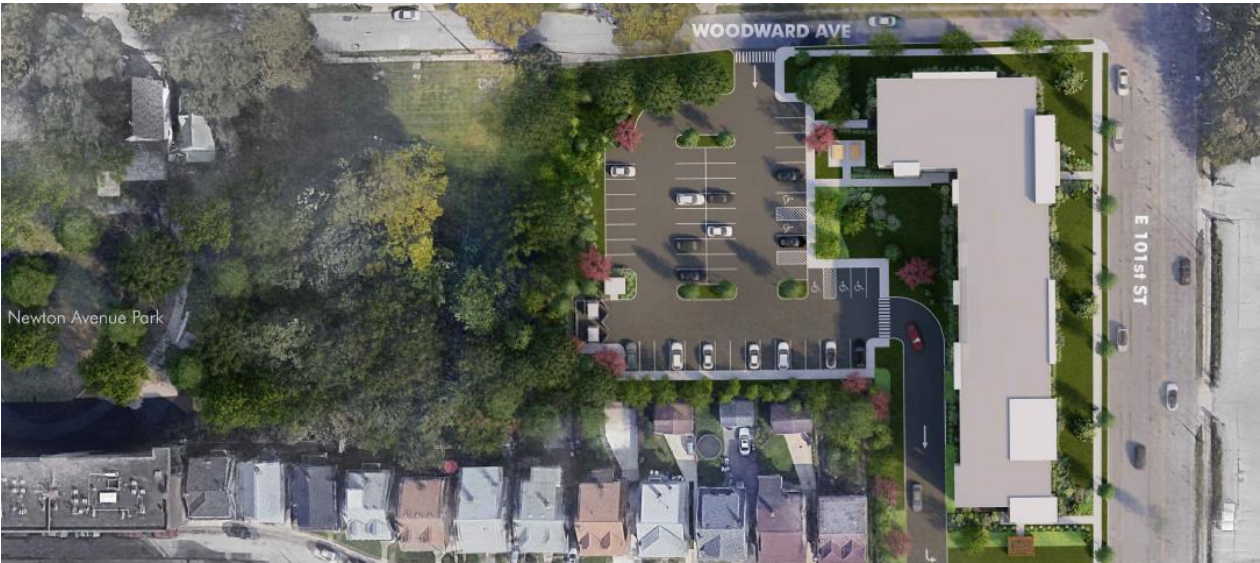
Gordon Crossing will be a new construction, 4-story general occupancy building with 54 units to add to Cleveland's much needed workforce housing.

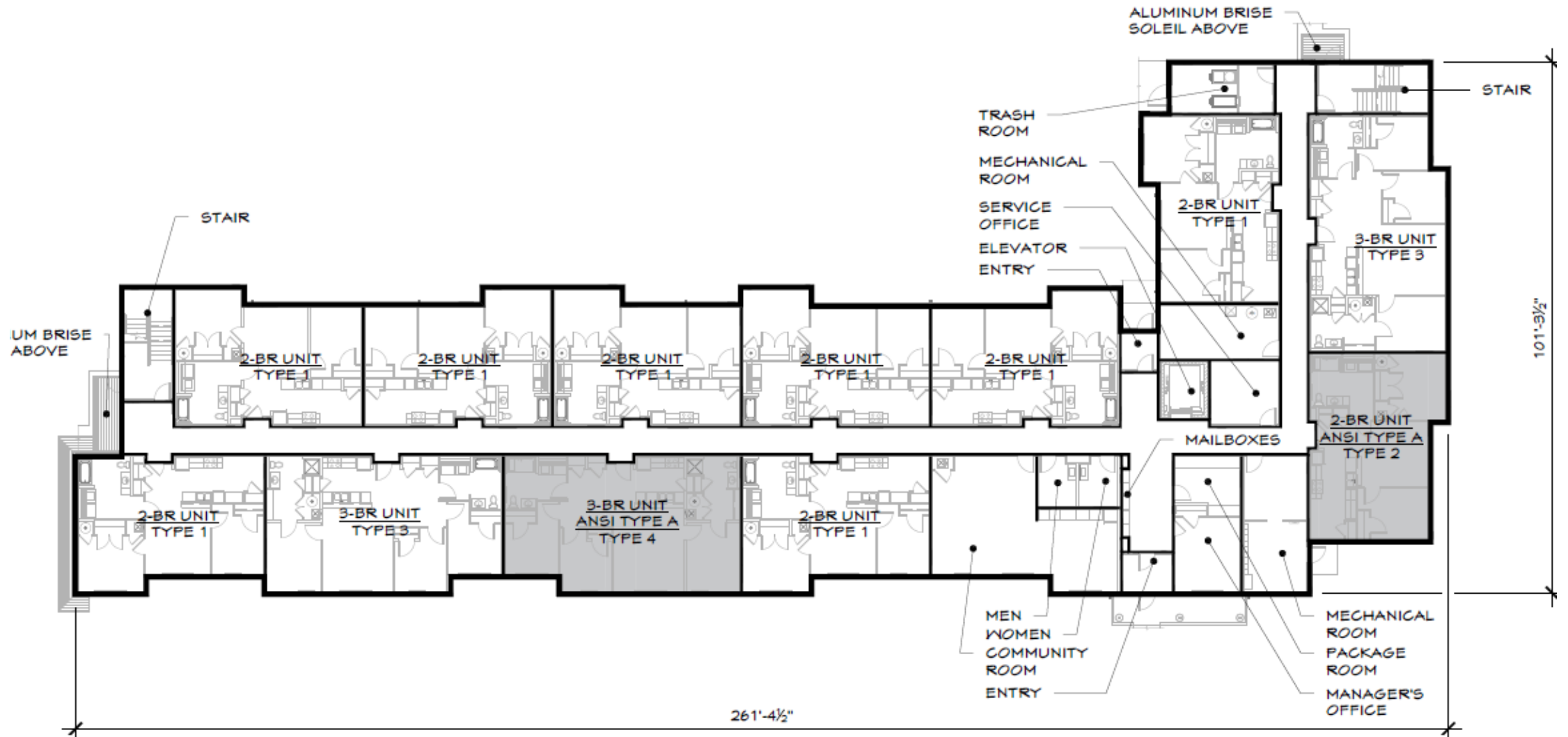
- Address: **Woodward Avenue & East 101<sup>st</sup> Street**
- Anticipated Construction Start: **Late Summer 2024**
- Placed In Service: **Q4 2025**





## Gordon Crossing Site Plan





# Gordon Crossing Floor Plan





Gordon Crossing Exterior

# Unit Mix

## Bedroom Composition:

- 42 2-bedrooms, and 12 3-bedrooms

## Area Median Income (AMI) Breakdown:

- 10 units at or below 30% Area Median Income (AMI)
- 2 units at or below 50% AMI
- 4 units at or below 60% AMI
- 30 units at or below 70% AMI
- 8 market rate units

## Residents Served:

- singles, young professionals, seniors, single-parent households, small families needing three-bedroom units, and those needing workforce housing in close proximity to numerous amenities and surrounding job centers.

