

LEGISLATIVE SUMMARY
Mayor's Office of Capital Projects
Division of Real Estate

Permanent Easement for Tamir Rice Memorial at Cudell Commons

Ordinance No:	247-2021
Legislative Purpose:	To authorize the Director of Public Works to grant a permanent easement to the Tamir Rice Foundation on a 0.0028-acre portion of Parcel No. 001-29-081 for constructing and maintaining a portion of the Tamir Rice Memorial at Cudell Commons.
Project Summary:	<p>City of Cleveland intends to transfer PPN 001-29-081 to the Cleveland Metropolitan School District ("CMSD") for construction of a new Marion C. Seltzer Elementary School.</p> <p>A very small portion of the sidewalk around the Tamir Rice Memorial ("Memorial") is located on this parcel; it is approximately 122 square feet and lies just outside of the old West Blvd. right-of-way. Granting an easement to the Tamir Rice Foundation ("Foundation") prior to transfer of land to CMSD will allow the memorial to remain undisturbed going forward.</p>
Tamir Rice Memorial:	<p>The majority of the Tamir Rice Memorial is located within the old West Blvd. right-of-way and the Foundation has been issued an encroachment permit pursuant to Ord 883-2020 to allow improvements and maintenance of the Memorial.</p> <p>The proposed improvements to the Memorial have been approved by Landmarks Commission and will be a memorial to Tamir Rice. The memorial is located at the existing butterfly garden dedicated to Tamir's sister, Tajai, and connects to the engraved stone memorializing Tamir. The connection is made by means of a walking path, and also a dry creek that will carry rainwater to the butterfly garden.</p>

The project will also make improvements to existing amenities at the site. These improvements include the addition of a refined, accessible pathway, additional plantings to create winter interest, and improvements to the stone edging. Additionally, the existing bollards will be touched up and sealed for preservation and redistributed evenly around the site.

Permanent Parcel No:	Portion of PPN 001-29-081
Price:	\$1.00
Ward:	Ward 15 (Councilmember Jenny Spencer)
Attachments:	Location map and renderings of the improvements



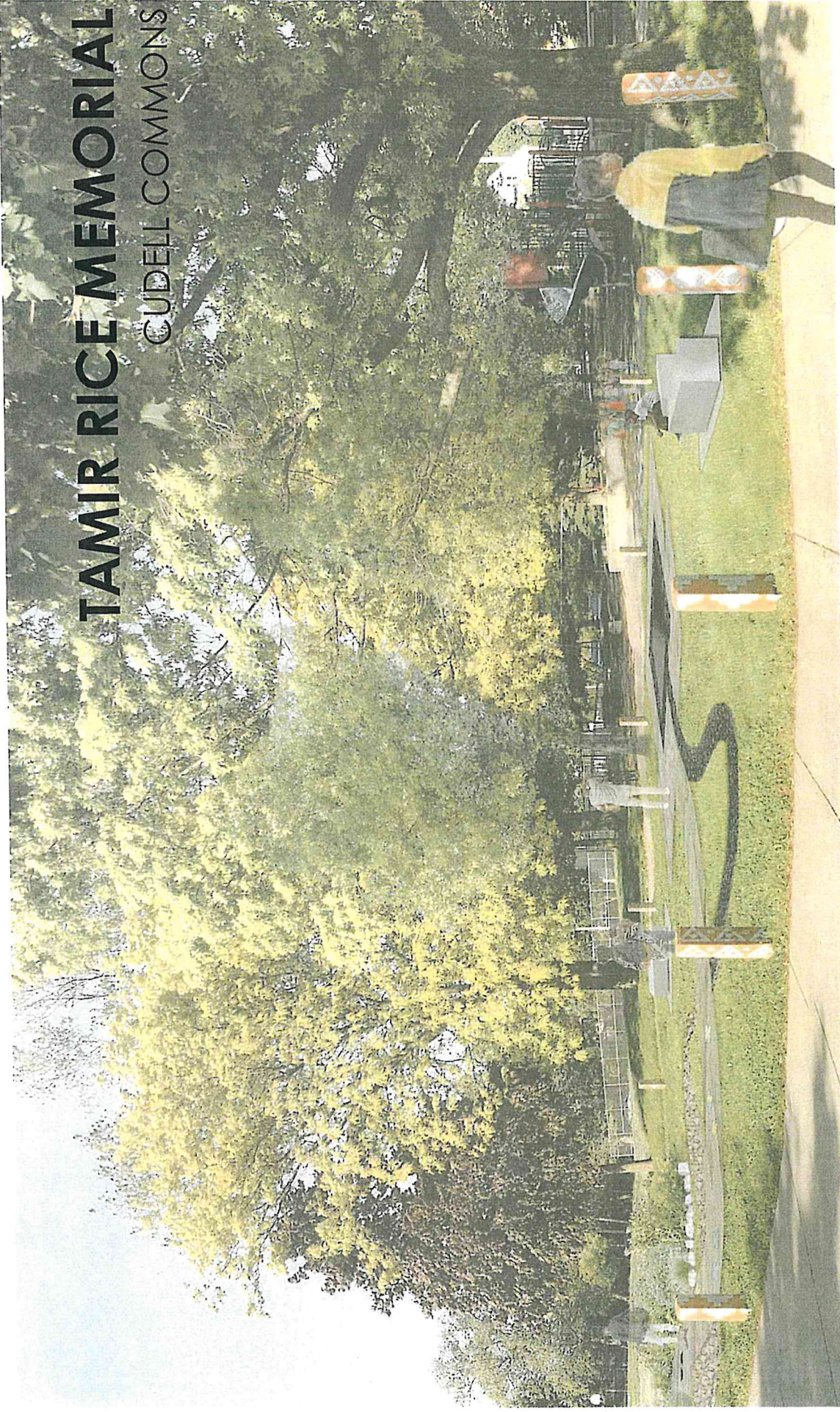
CITY OF CLEVELAND
Mayor Frank G. Jackson



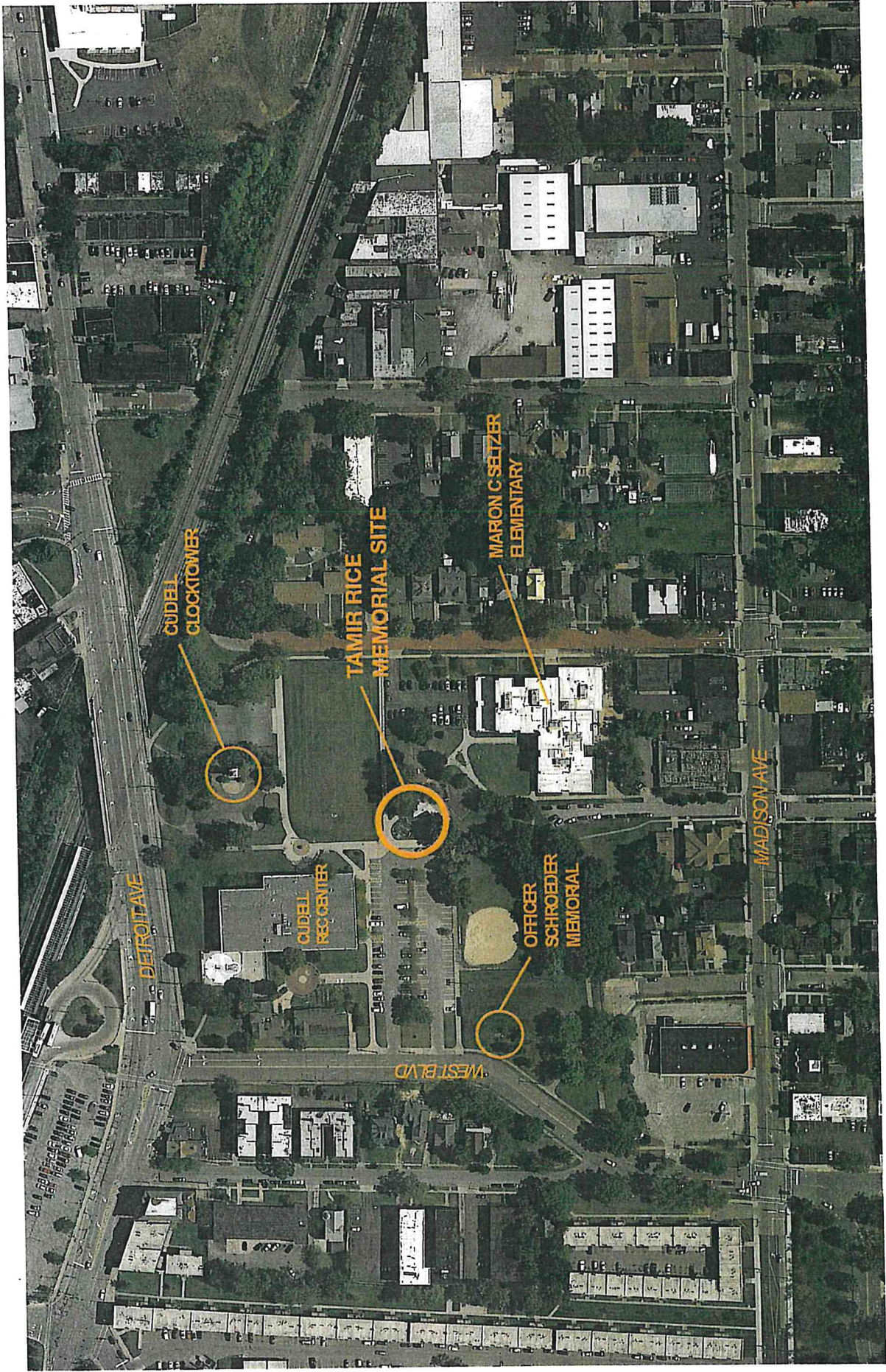
Location Map of Easement Area for Tamir Rice Memorial



TAMIR RICE MEMORIAL CUDELL COMMONS



LANDMARKS COMMISSION
JULY 9, 2020



CUDDELL
CLOCKTOWER

TAMIR RICE
MEMORIAL SITE

MARION C SELTZER
ELEMENTARY

CUDDELL
REC CENTER

OFFICER
SCHROEDER
MEMORIAL

DETROIT AVE

WEST BLVD

MADISON AVE

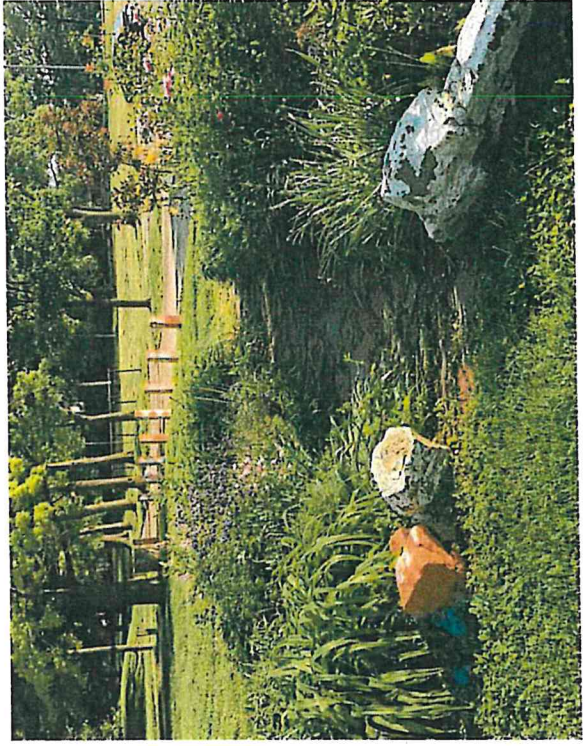
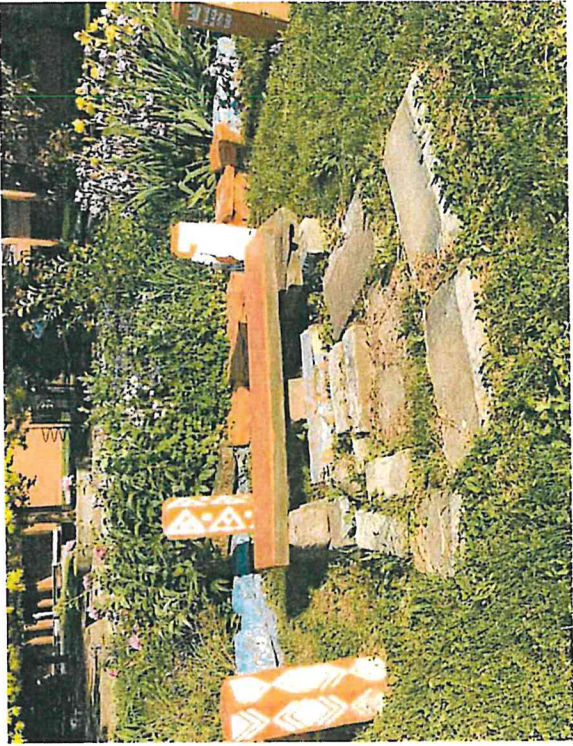
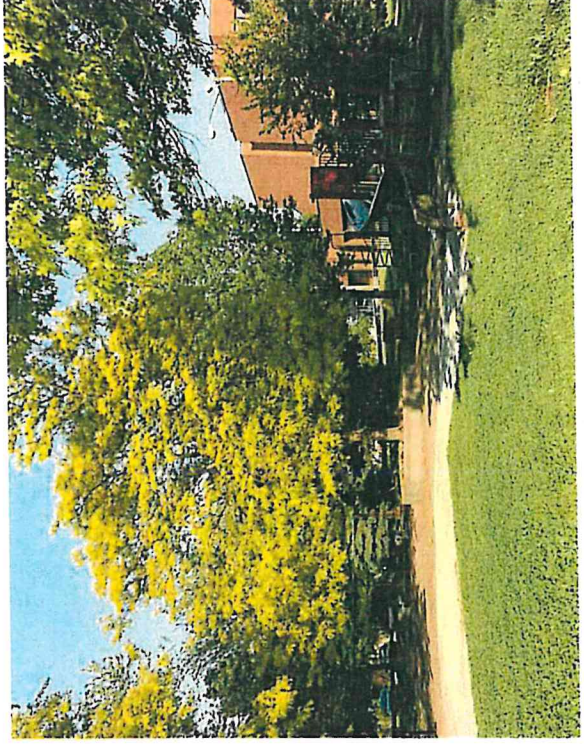
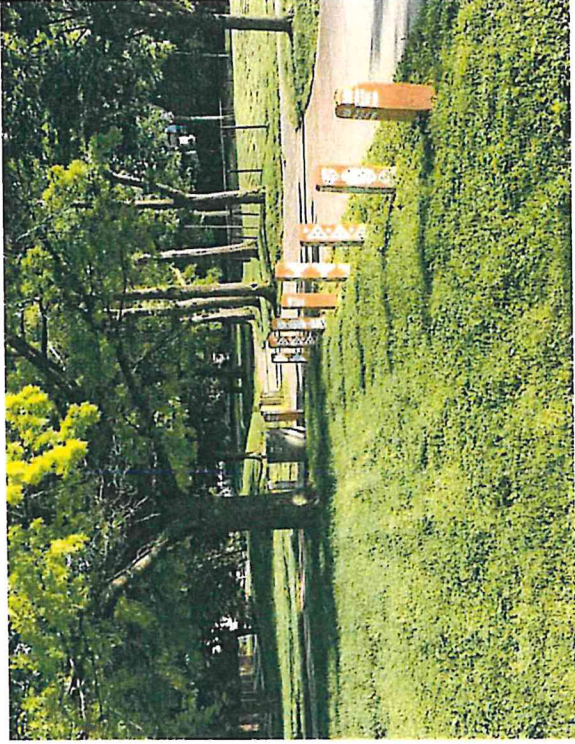


BUTTERFLY GARDEN

EXISTING PLAYGROUND

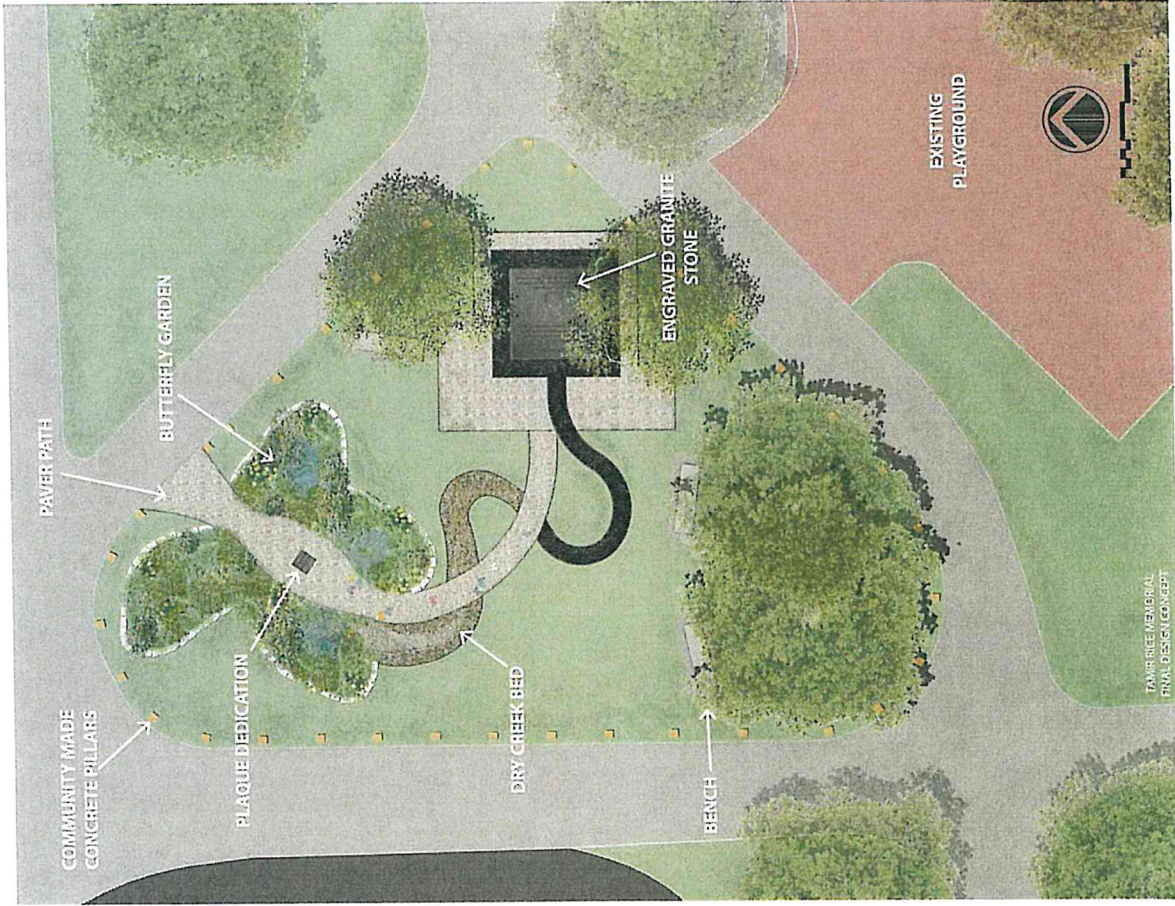
AREA OF SITE: 4,200 SF

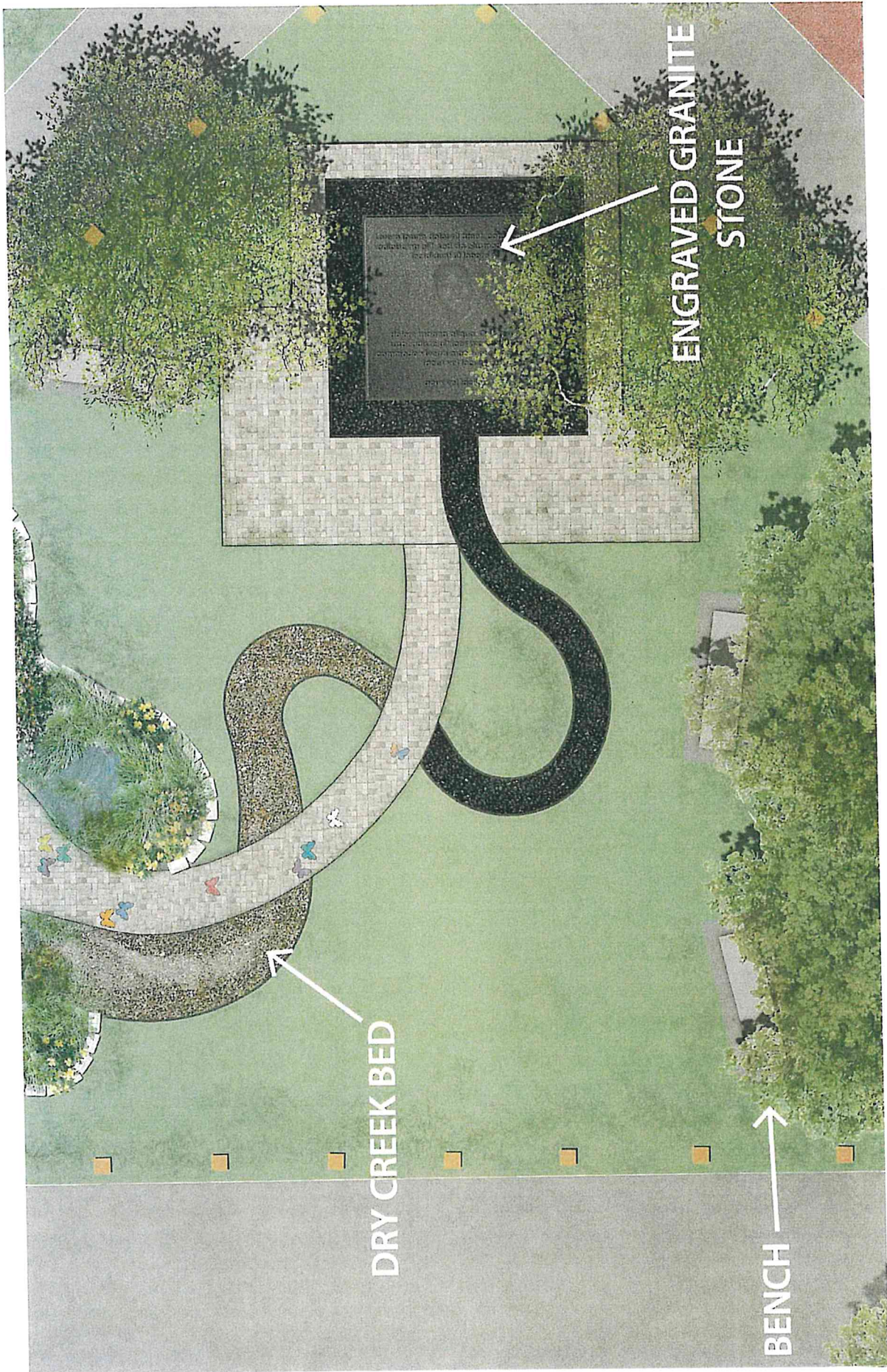
EXISTING SITE CONDITIONS



The Tamir Rice Memorial makes sacred a space of devastating injustice in the remembrance of a vibrant young Black child full of possibilities. It uses the forms of the butterfly and the box to signify what Tamir was, the flight of freedom, and what society assigned for him, the darkness of confinement.

The design incorporates the existing butterfly garden that is dedicated to Tamir's sister, Tajai, and connects it to the engraved stone memorializing Tamir. The connection is made through a walking path, and also a dry creek that will carry rainwater into the butterfly garden.





ENGRAVED GRANITE
STONE

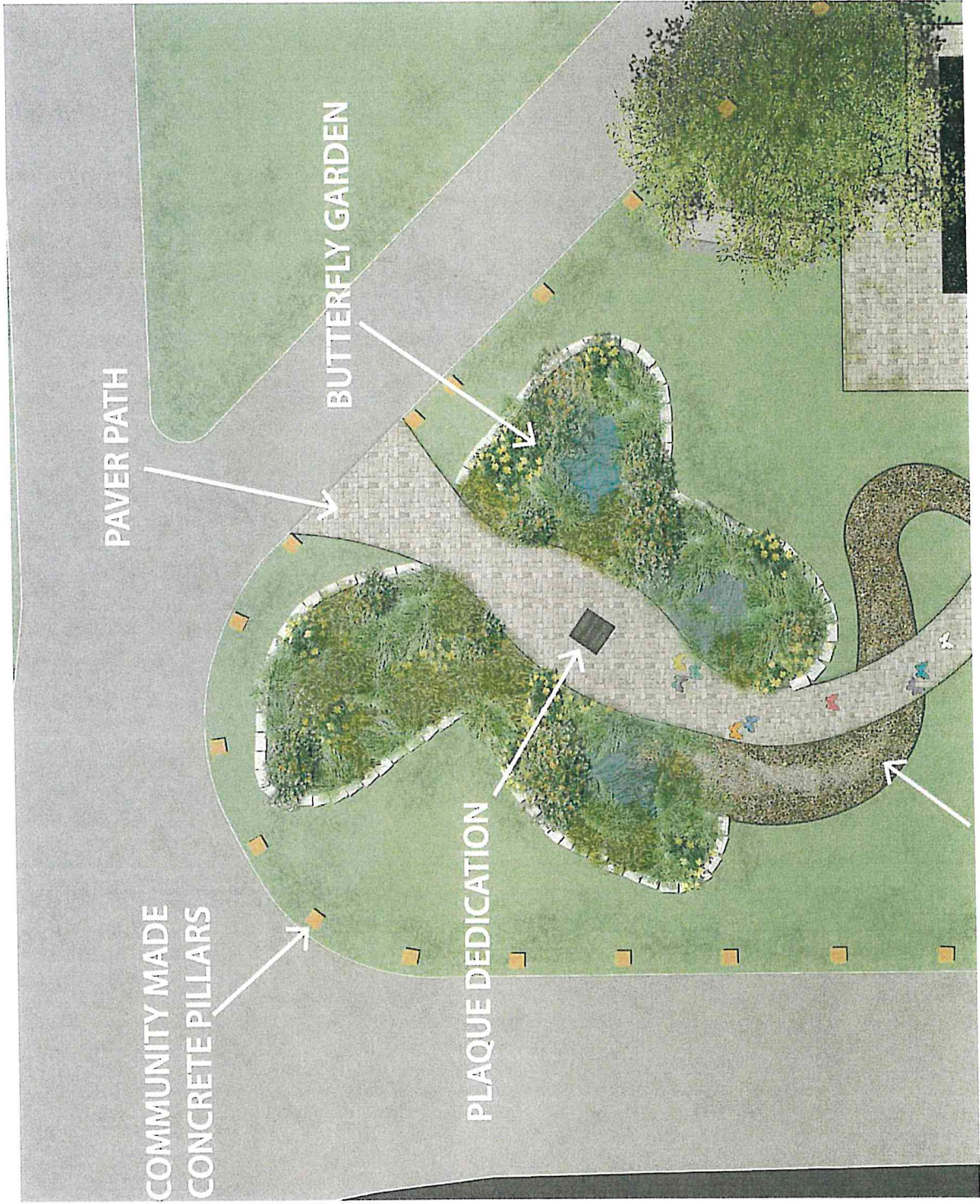
DRY CREEK BED

BENCH

The existing garden will undergo the following improvements:

- a refined, accessible pathway
- additional plants to create winter interest
- new stone edging

The existing bollards, painted by the community, will be touched up and sealed for preservation, and redistributed evenly around the site.





CONCEPT 1
SECTION B

TAMIR RICE MEMORIAL MATERIALS & FURNISHINGS

PAVERS



PAVER EXAMPLE



IVORY BAY
PERMEABLE PAVEN
BELDEN

BENCHES



SOCRATES BENCH
LANDSCAPE FORMS
4 OPTIONS IN CAST STONE



DRY CREEK



DRY CREEK EXAMPLE

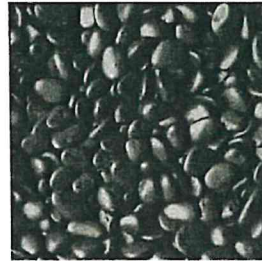
TREES



WHITE FLOWERING REDBUD



RIVER ROCK



BLACK RIVER
ROCK

