

MATCH LINE SEE SHEET 2

PERMANENT EASEMENT
 ACROSS PARCEL NO. 107-01-001
 PART OF ORIGINAL 100
 ACRE LOT NO. 385
 CITY OF CLEVELAND
 COUNTY OF CUYAHOGA
 STATE OF OHIO
 SHEET 1 OF 2

107-01-001
 CITY OF CLEVELAND
 V. 575 P. 540
 V. 575 P. 542
 V. 575 P. 545
 V. 575 P. 547

107-23-028
 FAMICOS
 FOUNDATION
 INC.

107-23-027
 1365 EAST
 BLVD. CORP

107-23-026

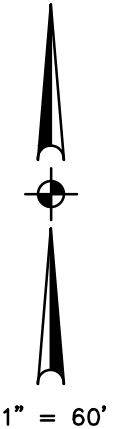
107-23-025
 THE 1377
 CORPORATION

107-23-024
 FIRST APT CORP

107-23-023
 BLUESTONE
 CIRCLE LLC

107-23-022
 CS PANDA, LLC

EAST BOULEVARD
 UNDEDICATED



ABBREVIATIONS

- AFN AUTOMATIC FILE NUMBER
- CCMR CUYAHOGA COUNTY MAP RECORDS
- P PAGE
- POB POINT OF BEGINNING
- POC POINT OF COMMENCEMENT
- V VOLUME

PERMANENT EASEMENT
DVRCS P01
0.4597 ACRE

| LINE TABLE | | |
|------------|-------------|--------|
| LINE | BEARING | LENGTH |
| L2 | S65°24'32"E | 49.17' |

| CURVE TABLE | | | | | |
|-------------|--------|---------|-----------|-------------|--------|
| CURVE | LENGTH | RADIUS | DELTA | BEARING | CHORD |
| C1 | 13.38' | 903.97' | 00°50'54" | S10°57'47"W | 13.38' |
| C2 | 20.49' | 903.97' | 01°17'55" | S12°02'12"W | 20.49' |



N03°36'44"E 227.98'
 S03°36'44"W 216.75'
 N65°24'32"W 67.38'

ASHBURY AVE 60'
 N65°38'37"W 362.96'
 POB
 DVRCS P01
 POC

E.105th ST. 60'

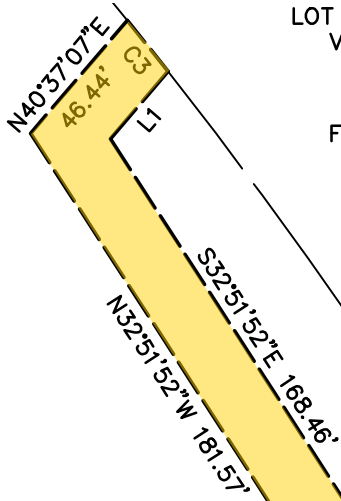
DRILL HOLE
 IN STONE FD
 & USED

Trevor A. Bixler 8-8-19
 TREVOR A. BIXLER
 PROFESSIONAL SURVEYOR, OHIO NO. 7730

KS KS Associates, Inc.
 260 Burns Road, Suite 100
 Elyria, OH 44035
 P 440 365 4730
 F 440 365 4790
 www.ksassociates.com

LOT CONSOLIDATION PLAT
V. 266 P. 61 CCMR

107-23-035
FAMICOS FOUNDATION
AFN 201405090612



107-23-034
1327 EAST
BOULEVARD
CORPORATION

107-23-033

107-23-032

107-23-031
1341 EAST
BOULEVARD,
LLC

107-23-030
WOODROW
PROPERTY
MANAGEMENT
LLC

107-23-029

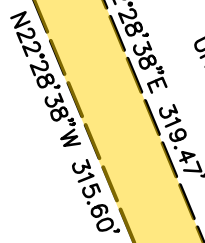
EAST BOULEVARD
UNDEDICATED

PERMANENT
EASEMENT
DVRCS P01
0.4597 ACRE

107-01-001
CITY OF CLEVELAND
V. 575 P. 540
V. 575 P. 542
V. 575 P. 545
V. 575 P. 547



1" = 60'



MATCH LINE SEE SHEET 1

LINE TABLE

| LINE | BEARING | LENGTH |
|------|-------------|--------|
| L1 | S40°37'07"W | 27.70' |

CURVE TABLE

| CURVE | LENGTH | RADIUS | DELTA | BEARING | CHORD |
|-------|--------|----------|-----------|-------------|--------|
| C3 | 20.36' | 1542.25' | 00°45'23" | S38°36'15"E | 20.36' |

PERMANENT EASEMENT
ACROSS PARCEL NO. 107-01-001
PART OF ORIGINAL 100
ACRE LOT NO. 385
CITY OF CLEVELAND
COUNTY OF CUYAHOGA
STATE OF OHIO
SHEET 2 OF 2



KS Associates, Inc.
260 Burns Road, Suite 100
Elyria, OH 44035
P 440 365 4730
F 440 365 4790
www.ksassociates.com

Date: 2/2/2017 Path: P:\10_Projects\NEORS\SD\70NR\3\envi_Surveys\Projects\CURSD\YR\EVALUATIONS\DIRCS\GIS\Map5_Site.mxd



Pin oak across from 1341 East Blvd.

Figure 1.01. Site Map of Wetlands and Other Water Resources.
NEORS - DVRCS.



 Project Area

0 100 200 400 Feet

0 20 40 80 Meters



5.01

 **EnviroScience**
Excellence In Any Environment

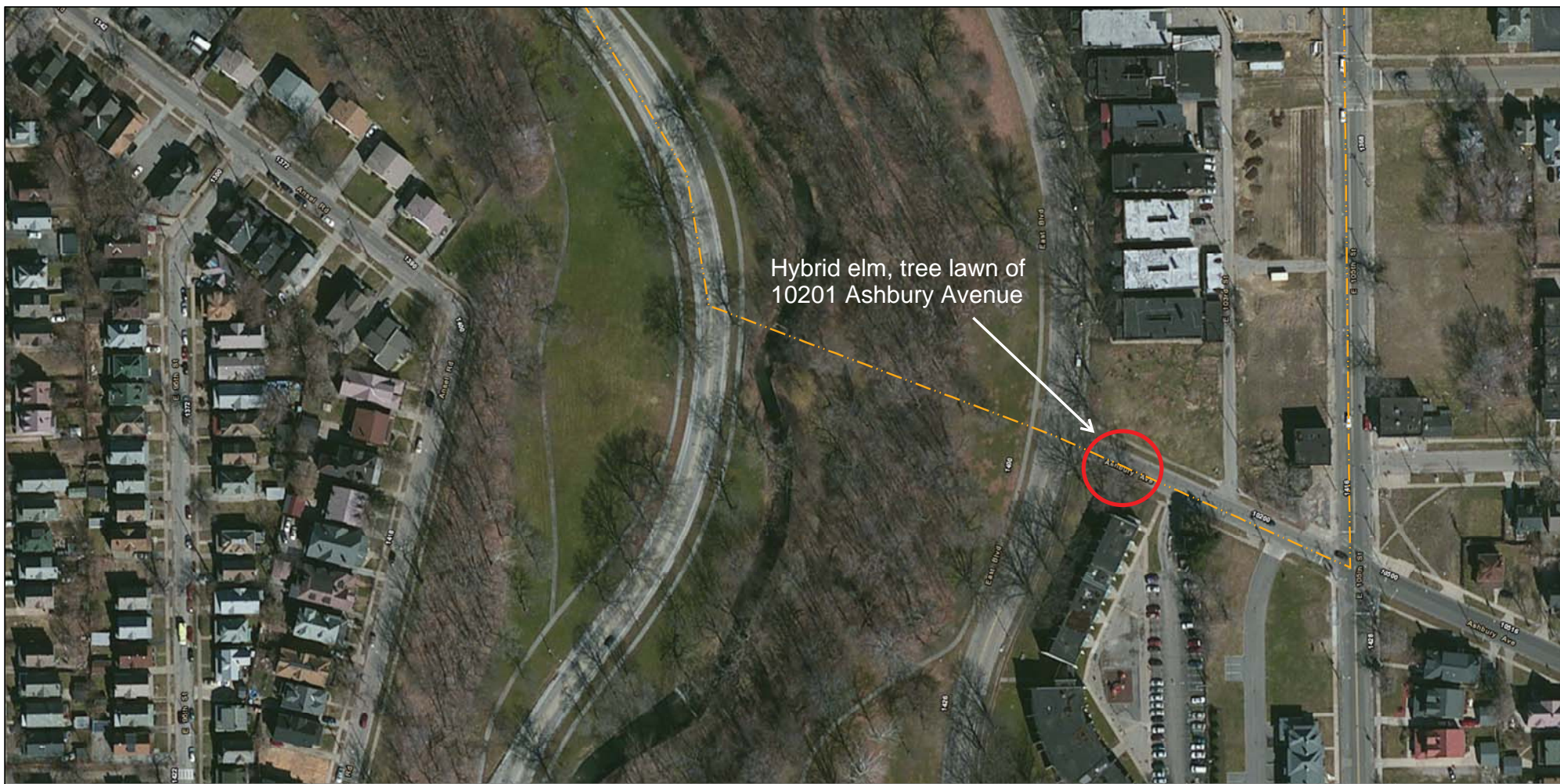


Figure 1.02. Site Map of Wetlands and Other Water Resources.
NEORSD - DVRCS.



 Project Area

0 100 200 400 Feet

0 20 40 80 Meters



5.02

