

Cleveland's

# North Coast

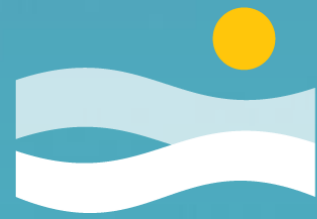
## North Coast Connector (549-2025) Let's Build a Bridge!

June 2, 2025



# Agenda

- North Coast Connector Overview
- Current Status
- Osborn Extended Scope of Services
- Next Steps



Cleveland's

**North Coast**

## Project Overview

# Shore to Core to Shore

Lake Access

Connectivity

Riverfront  
Development

Pedestrian & Bike  
Safety

Urban Community



# What Is the North Coast Connector?



## Pedestrian Land Bridge

- Pedestrian only connection from downtown to Lakefront
  - Makes iconic experience for locals and visitors
  - Immediately improves access to lakefront
  - Creates public pathway from riverfront through downtown to Lakefront

## Shoreway Transformation

- Transformation of Shoreway into a Boulevard
  - Opens additional development opportunities
  - Creates a pedestrian friendly city street
  - Slows traffic and increases safety
  - Removes historic barrier to lakefront access



## Phase 1

## Phase 2



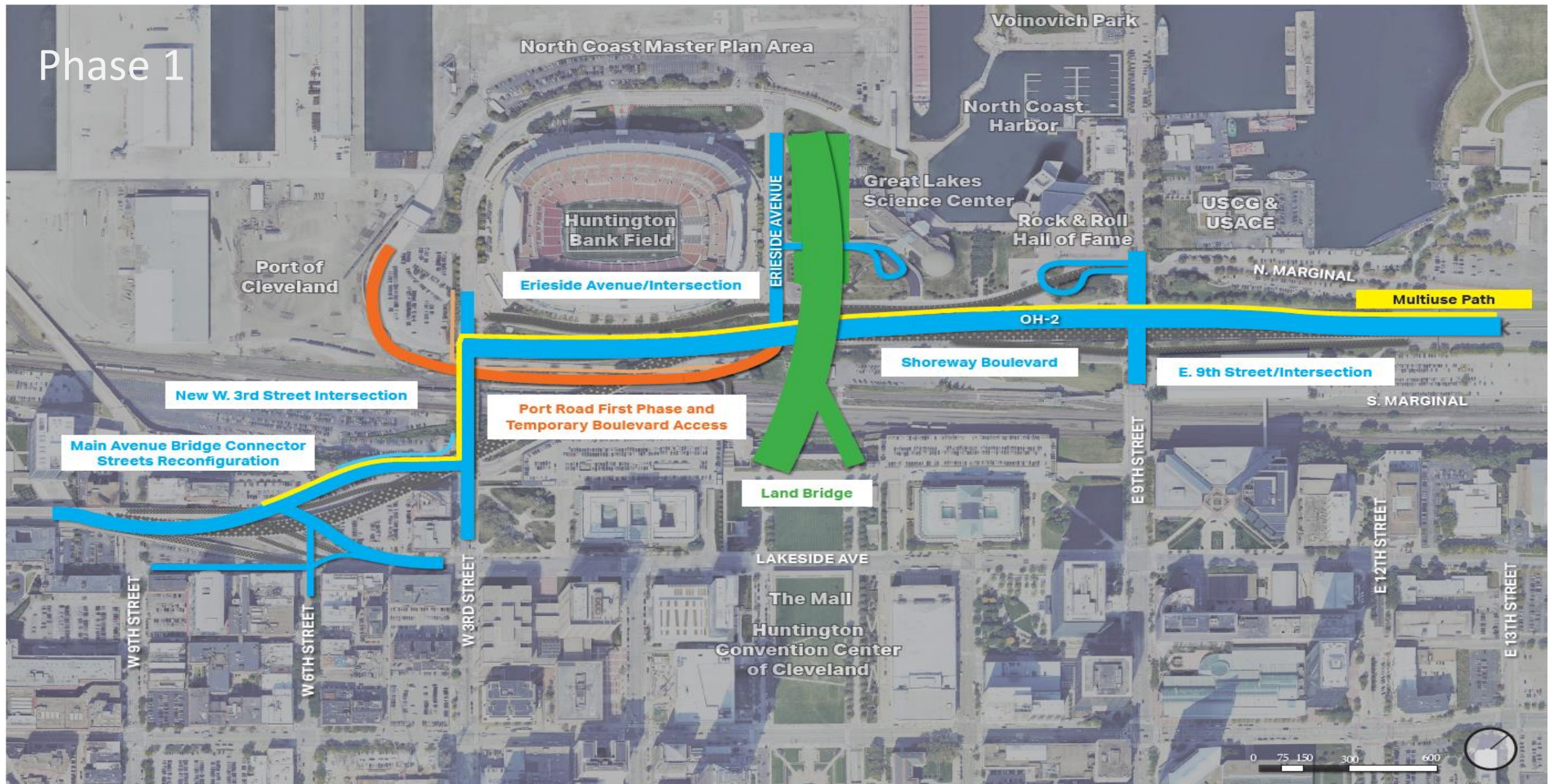
# Phase 1

## Project Budget - Land Bridge + Downtown Boulevard

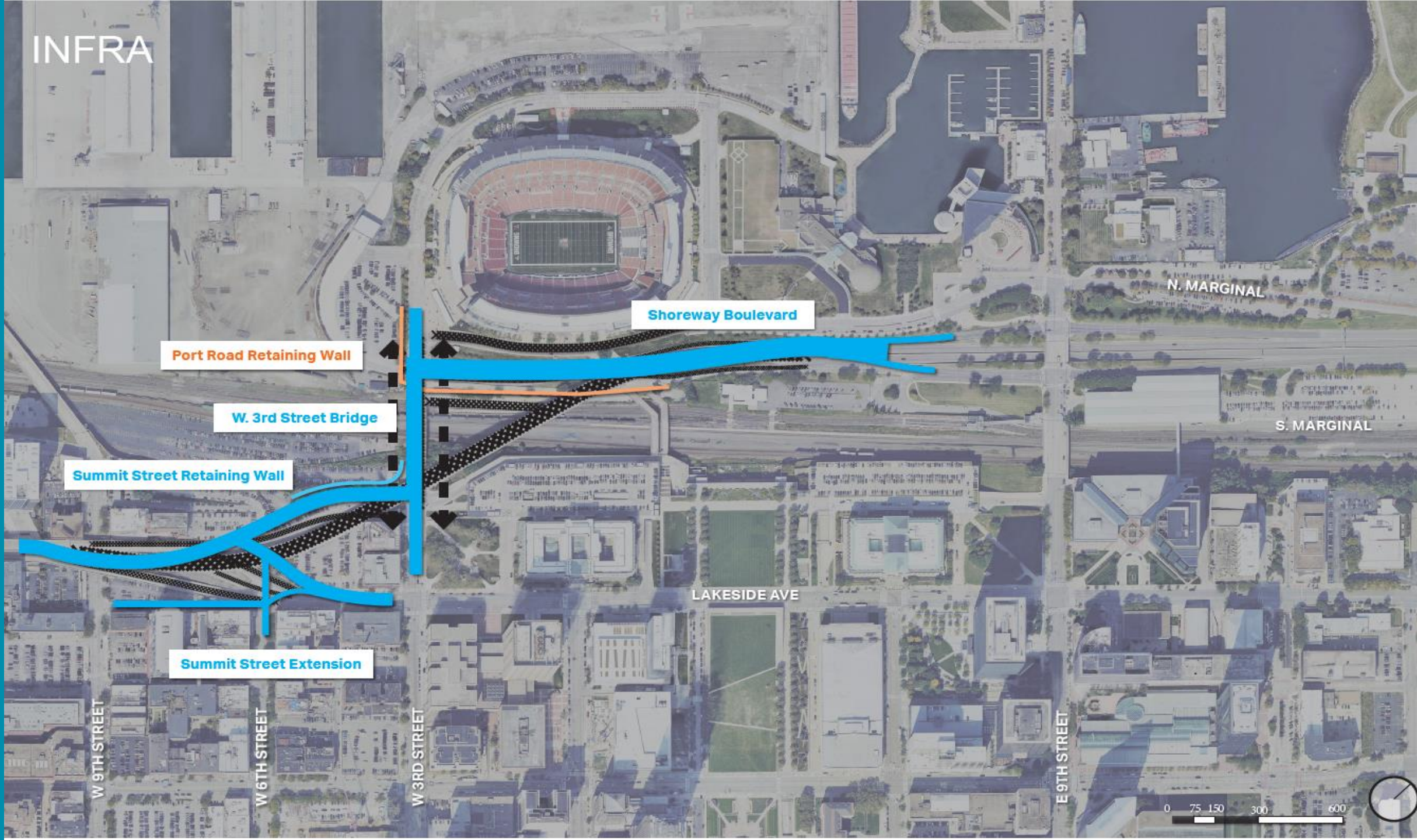
RCP North Coast Connector Project: Land Bridge + Downtown Boulevard Sources (Revised Dec. 6, 2024)							
Funding Source	Land Bridge	Shoreway Boulevard	Port Access	Trails/Pedestrian Enhancement	Grant Administration	Total	Percentage
Reconnecting Communities Pilot	\$ 66,308,604			\$ 2,982,824		\$ 69,291,428	24%
Other Federal (INFRA)		\$ 54,419,267	\$ 5,300,000			\$ 59,719,267	21%
Non-Federal (State of Ohio Grant Funds)	\$ 20,000,000					\$ 20,000,000	7%
Non-Federal (TIFIA Loan/TIF Bonding)	\$ 58,804,670	\$ 51,848,370	\$ 18,720,975	\$ 5,626,680		\$ 135,000,695	48%
Local In Kind					\$ 475,000	\$ 475,000	
<b>Current Total</b>	<b>\$ 145,113,274</b>	<b>\$ 106,267,637</b>	<b>\$ 24,020,975</b>	<b>\$ 8,609,504</b>	<b>\$ 475,000</b>	<b>\$ 284,486,390</b>	<b>100%</b>

Ohio Department of Natural Resources - \$8,000,000

# Phase 1



# INFRA



Shoreway Boulevard

Port Road Retaining Wall

W. 3rd Street Bridge

Summit Street Retaining Wall

Summit Street Extension

N. MARGINAL

S. MARGINAL

LAKESIDE AVE

W 9TH STREET

W 6TH STREET

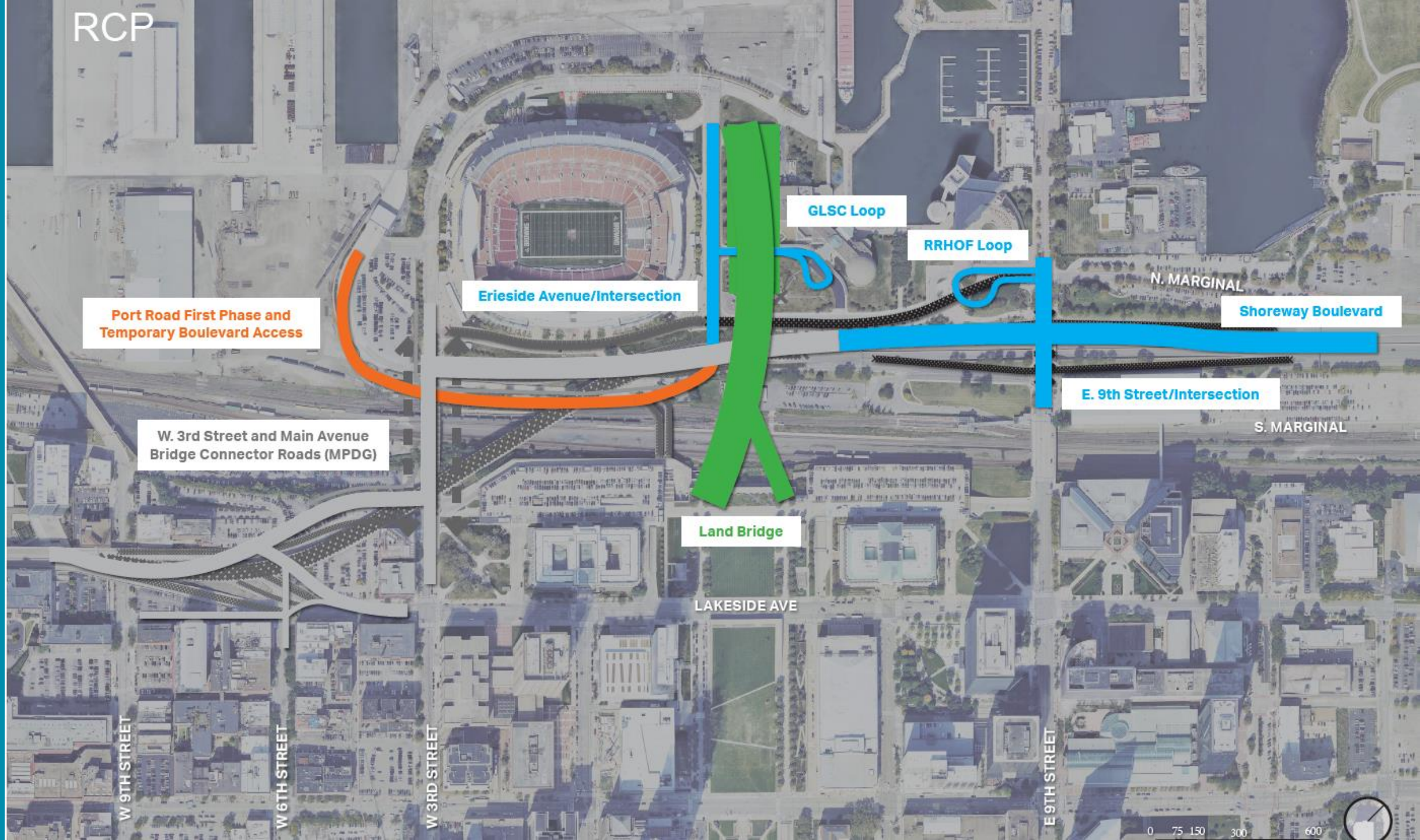
W 3RD STREET

E 9TH STREET

0 75 150 300 600



RCP



Port Road First Phase and  
Temporary Boulevard Access

W. 3rd Street and Main Avenue  
Bridge Connector Roads (MPDG)

Erieside Avenue/Intersection

GLSC Loop

RRHOF Loop

N. MARGINAL

Shoreway Boulevard

E. 9th Street/Intersection

S. MARGINAL

Land Bridge

LAKESIDE AVE

W 9TH STREET

W 6TH STREET

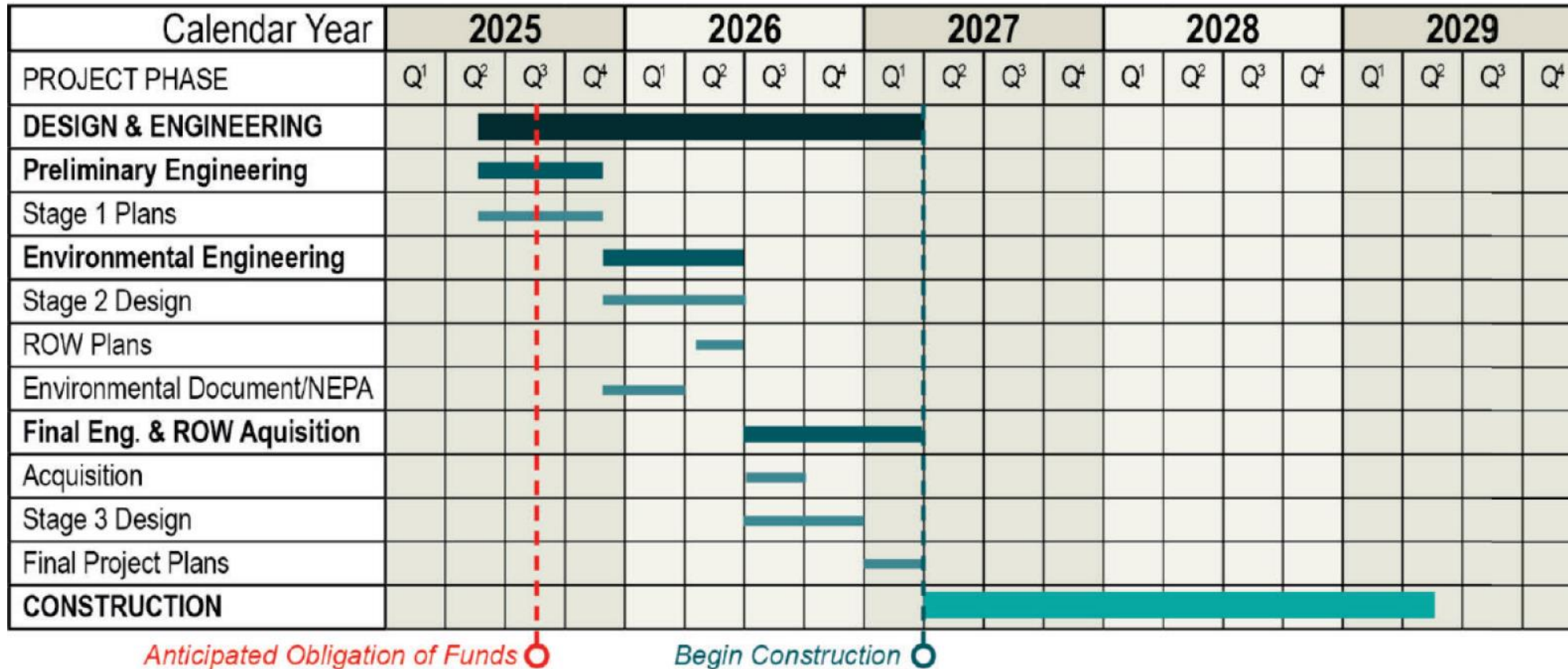
W 3RD STREET

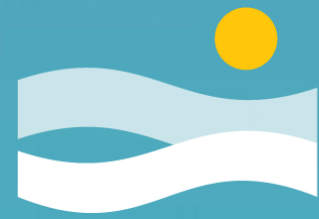
E 9TH STREET

0 75 150 300 600



## Project Schedule – Land Bridge + Downtown Boulevard





Cleveland's

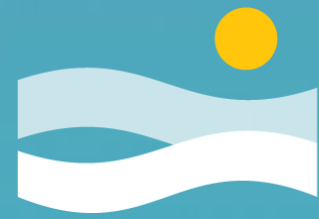
**North Coast**

# **Alternative Evaluation Report Osborn Contract Extension**

# Extended Services



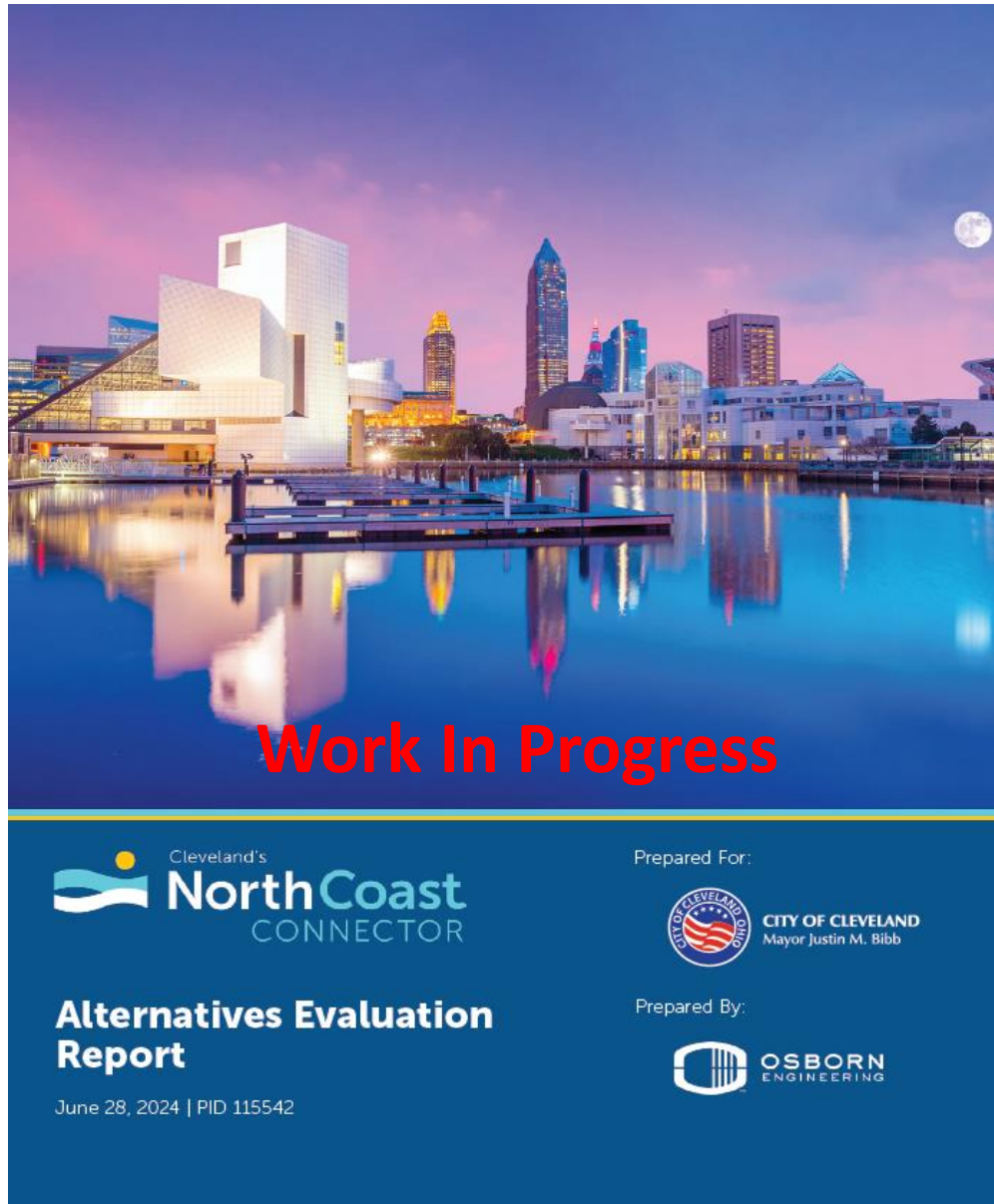
- AER Completion Requirements
  - Structure Type Studies and Preliminary Retaining Wall Design
  - Port Rd. Alignment
  - Traffic Analysis
  - Railroad Coordination
- Design-Build Package Preparation
  - RTA East 9<sup>th</sup> St. Pedestrian Connection
  - Preliminary Layout for Garages
  - Maintenance of Traffic Alternative Analysis
  - Bid Documents
- Community Engagement
- Coordination with Stakeholders, NCWDC, and Public Agencies
- Multimodal Transportation Hub



Cleveland's

**North Coast**

## **Current Project Activities**



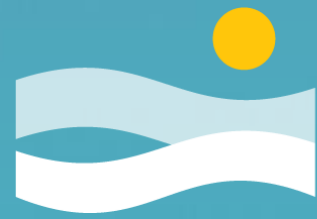
# Current RFQs

- Owners Representative
  - Manage NCC's design and implementation through post-construction
  - Align project with vision and meets Cleveland's diverse technical, aesthetic, and community needs
  - Execute Alternative Evaluation findings and implement project per FHWA and NEPA requirements.
- NEPA Consultant
  - Prepare documents and submittals per FHWA requirements

# FHWA Engagement



- Grant Execution & Administration
- Design Build Method
- Right of Way/Land Acquisition
- NEPA
- Major Project Designation



Cleveland's

**North Coast**

**Thank you**