

The vacation a portion of Southpoint Drive S.W., Eglindale Avenue S.W., West 17th Street and Ginger Court.

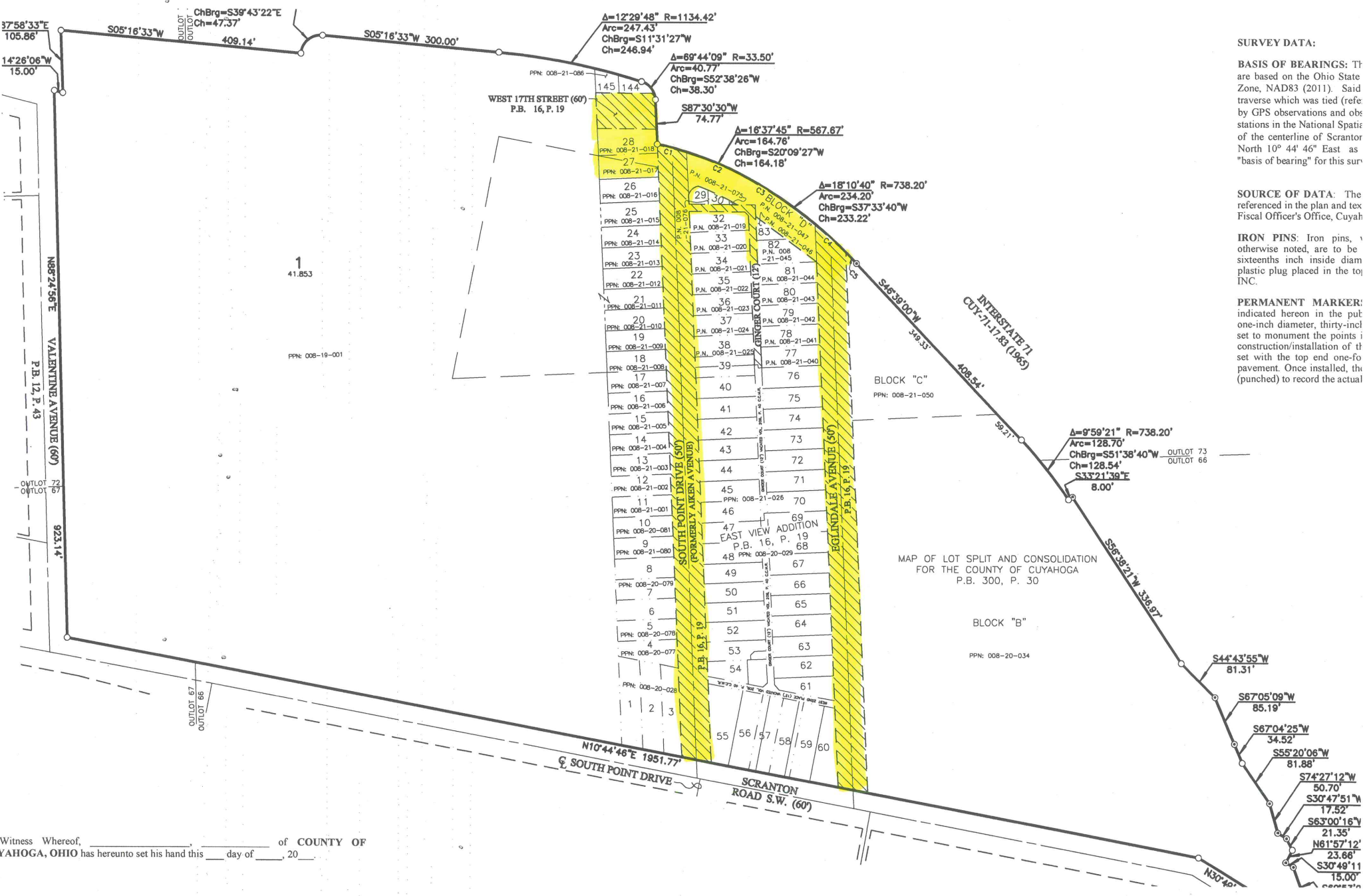
SURVEY DATA:

BASIS OF BEARINGS: Tl are based on the Ohio State Zone, NAD83 (2011). Said traverse which was tied (refe by GPS observations and obs stations in the National Spatiz of the centerline of Scrantor North 10° 44' 46" East as "basis of bearing" for this sur

SOURCE OF DATA: The referenced in the plan and tex Fiscal Officer's Office, Cuyah

IRON PINS: Iron pins, 1 otherwise noted, are to be sixteenths inch inside diam plastic plug placed in the top INC.

PERMANENT MARKER: indicated hereon in the put one-inch diameter, thirty-incl set to monument the points i construction/installation of tl set with the top end one-fo pavement. Once installed, th (punched) to record the actual



Witness Whereof, _____ of COUNTY OF VAHOGA, OHIO has hereunto set his hand this ____ day of ____, 20__.