

LEGISLATIVE SUMMARY
Mayor's Office of Capital Projects
Division of Real Estate

**NEORS D: Sale of Easements for the Shoreline Consolidation Sewer (SCS)
Project at or under Various City Properties**

Ordinance No: 995-2021

Legislative Purpose: To authorize the Department of Public Works and Public Utilities to sell permanent, temporary, and subterranean easements within and under portions of various City properties near S. Marginal Road to the Northeast Ohio Regional Sewer District (NEORS D) to secure the right of way necessary for the Shoreline Consolidation Sewer (SCS) Project.

Project Summary: NEORS D's Shoreline Consolidation Sewer (SCS) Project will cross portions of land owned by the City of Cleveland near S. Marginal Road at the following locations: Parks Mall Maintenance & Streets Operations (1155 E. 40th St.), Kirtland Park (1140 E. 49th St.), Kirtland Pump Station (4901 S. Marginal Rd.), CPP Substation (S. Marginal Rd.), and a Vacant Parcel Adjacent to the CPP Pole Yard at S. Marginal Rd. (Rear).

The SCS is a nearly 1 mile long, deep tunnel that will capture overflows from outfalls along the Lake Erie shoreline and will then divert them to the adjacent NEORS D Shoreline Storage Tunnel. The improvements brought by the SCS project to the combined sewer system will greatly reduce the volume and frequency of wet weather combined sewer overflows to Lake Erie, thereby helping to improve Lake Erie water quality.

In order to have access to the project area for construction and future maintenance, NEORS D is seeking three permanent surface easements, five permanent subterranean easements, and three temporary easements from the City.

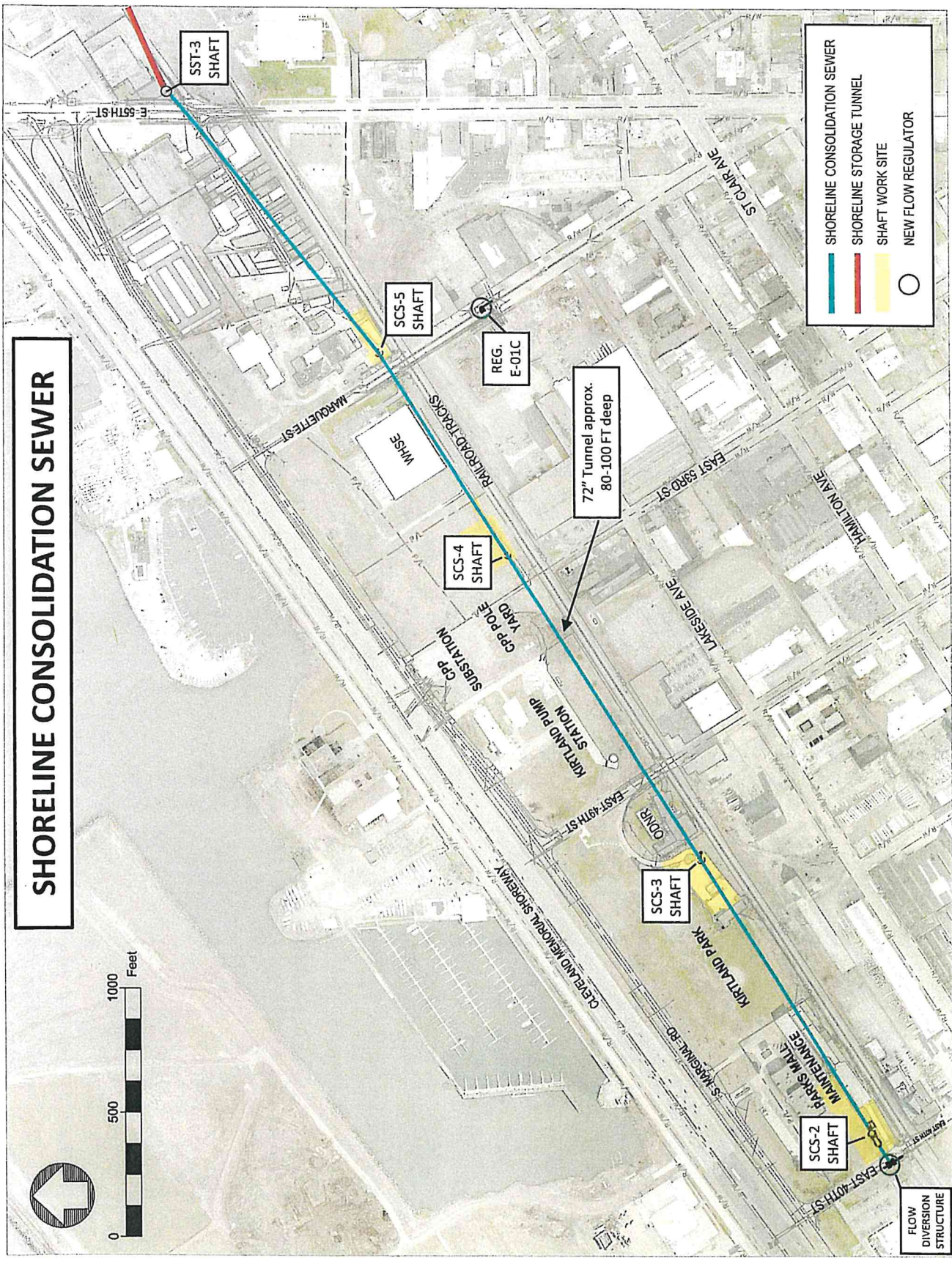
The 6-FT diameter tunnel will be approximately 100 feet below ground with no access to the CWD or CPP facilities at the surface.

Parks Mall Maintenance & Streets Operations: An access shaft (SCS-2) will be constructed adjacent to the entrance drive to this facility. The drive gate will not be closed or locked by the NEORS D contractor. The NEORS D

contractor will not park vehicles in the upper or lower City lots nor will the contractor restrict movement of traffic within this facility. Any disturbed trees will be replaced with new trees.

Kirtland Park:	An access shaft (SCS-3) will be constructed adjacent to the Park Maintenance Building. The NEORSD contractor will allow access to this building at all times during construction.
Kirtland Pump Station & CPP Substation:	Sewer will be subterranean and will not affect any improvements at the surface.
Vacant Parcel Adjacent to CPP Pole Yard:	An access shaft (SCS-4) will be constructed at this site and permanently removed after construction.
Sale Price:	\$150,434 (appraised value)
Departmental Allocation:	\$94,534 = Public Works \$32,900 = DPU, Cleveland Public Power \$23,000 = DPU, Division of Water
Permanent Parcel Nos:	Various – see attached spreadsheet
Ward:	10, Councilperson Anthony Hairston
Attachments:	Project Maps and Summary Spreadsheet

SHORELINE CONSOLIDATION SEWER

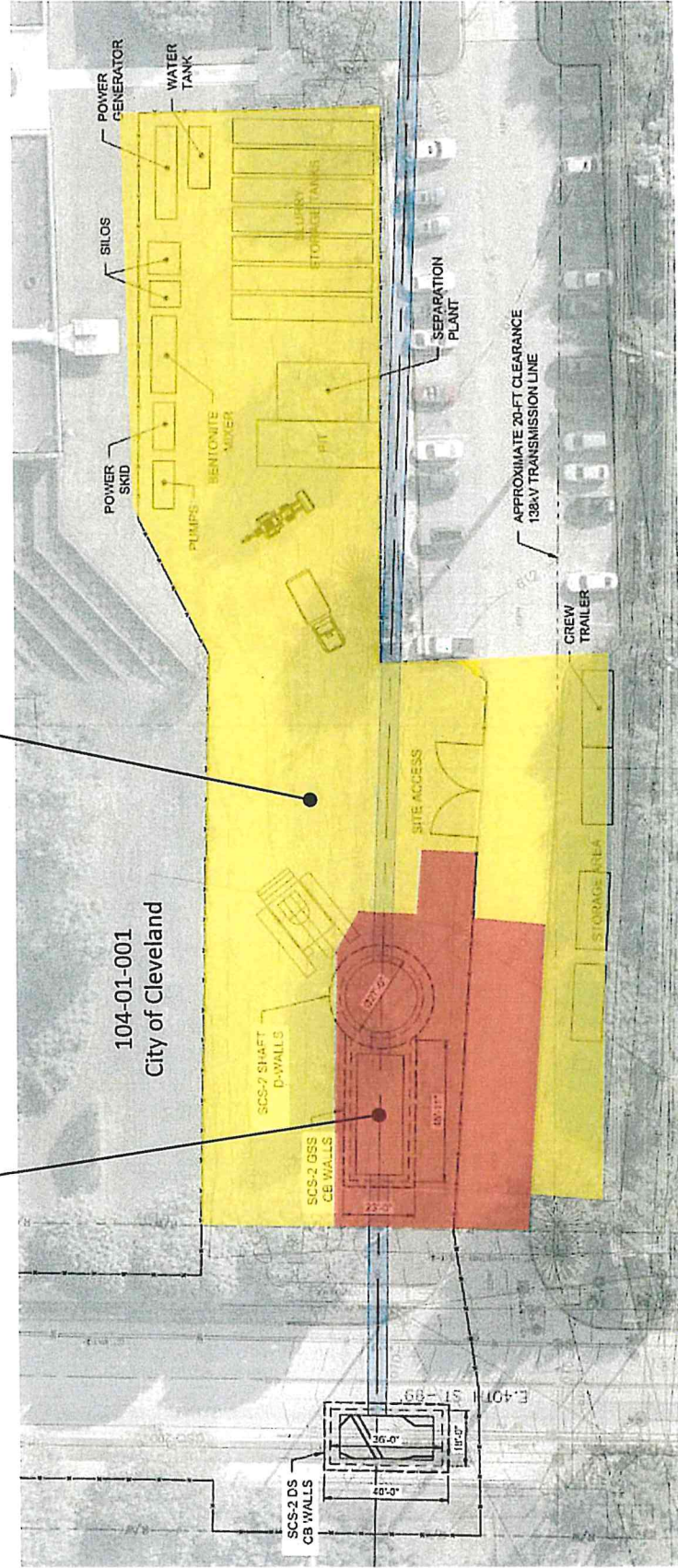


- SHORELINE CONSOLIDATION SEWER
- SHORELINE STORAGE TUNNEL
- SHAFT WORK SITE
- NEW FLOW REGULATOR

SCS-2 Shaft Site - Parks Mall Maintenance & Street Operations (1155 E. 40th St.)

Permanent Easements
104-01-001-P1 & P2 (0.1597 acre)

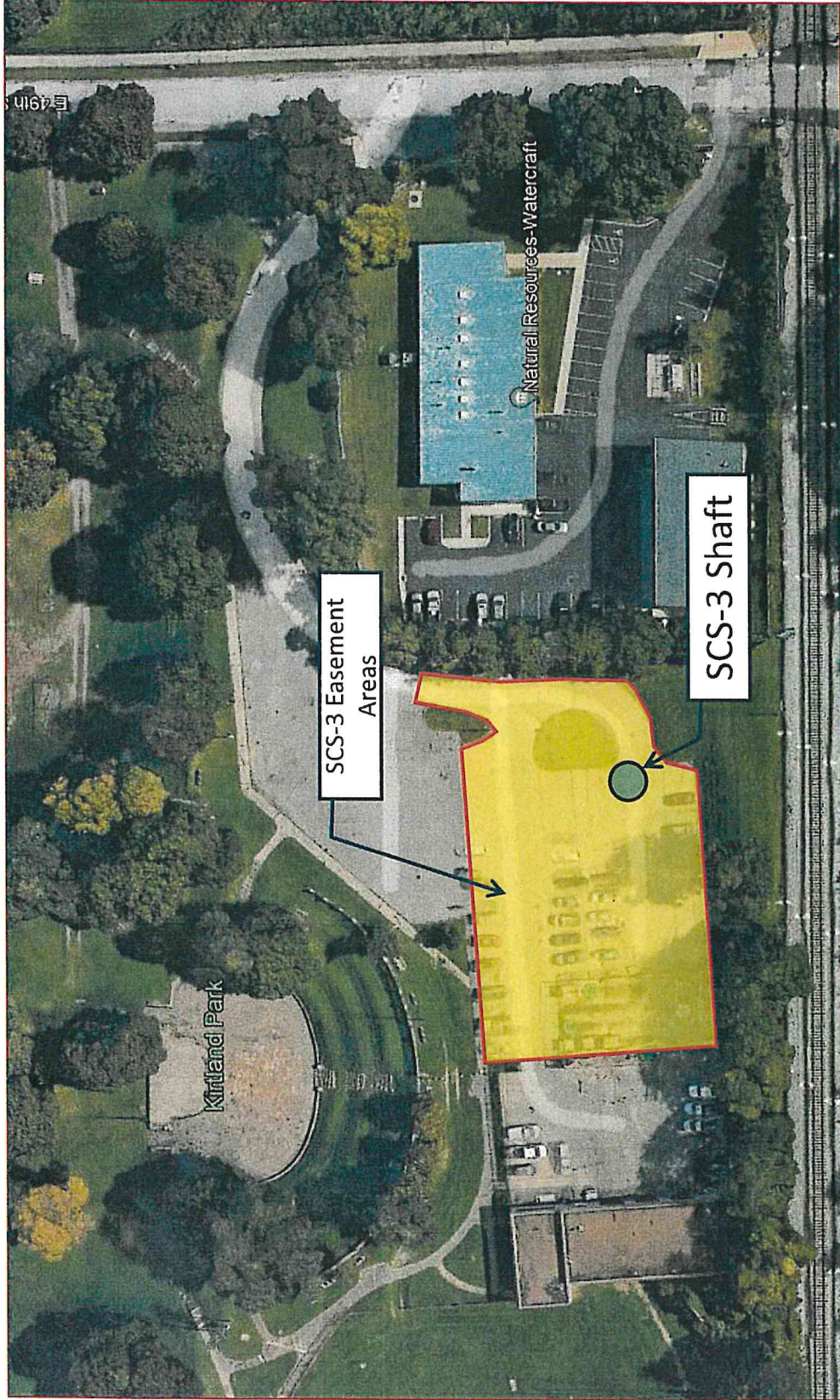
Temporary Construction Easement
104-01-001-T (0.7066 acre)



Notes:

- City's gate shall not be locked or closed by SCS contractor.
- SCS contractor shall not park vehicles in upper or lower city lots.
- SCS contractor shall not restrict the movement of traffic on city property.

SCS-3 Shaft Site – Kirtland Park



Notes:

- SCS contractor shall allow city to access garage through the work site.
- SCS contractor shall maintain accessibility of the entire garage by the city.
- City to store portable toilets elsewhere for SCS project duration

SCS-4 Shaft Site - Vacant Parcel Adjacent to CPP Pole Yard

Temporary Construction Easement
104-01-016-T (0.8057 acre)



SCS Easements - City of Cleveland Parcels

Location	Department	PPN	Easement Type			Acreage	Value	Total Per Parcel
			Non-Exclusive Permanent	Exclusive Temporary				
Parks Mall Maintenance & Streets Operations 1155 E. 40th St.	Public Works	104-01-001	104-01-001-P1		Surface & Subsurface	0.1055	\$7,950	\$45,800
			104-01-001-P2		Surface	0.0542	\$4,100	
			104-01-001-P3		Subterranean	0.3902	\$19,550	
				104-01-001-T	Surface	0.7066	\$14,200	
Kirtland Park 1140 E. 49th St.	Public Works	104-01-002A	104-01-002A-P1		Surface	0.0244	\$1,850	\$48,734
			104-01-002A-P2		Subterranean	0.4704	\$23,550	
			104-01-002A-P3		Subterranean	0.2359	\$11,800	
				104-01-002A-T	Surface	0.5767	\$11,534	
Kirtland Pump Station 4901 S. Marginal Rd. CPP Substation S. Marginal Rd.	Public Utilities - CWD	104-02-010	104-02-010-P		Subterranean	0.4236	\$23,000	\$33,600
	Public Utilities - CPP					0.1935	\$10,600	
Vacant Parcel Adjacent to CPP Pole Yard S. Marginal Rd. (Rear)	Public Utilities - CPP	104-02-016	104-02-016-P		Subterranean	0.2714	\$10,200	\$22,300
					Surface	104-02-016-T	0.8057	
			Totals			4.2581		\$150,434



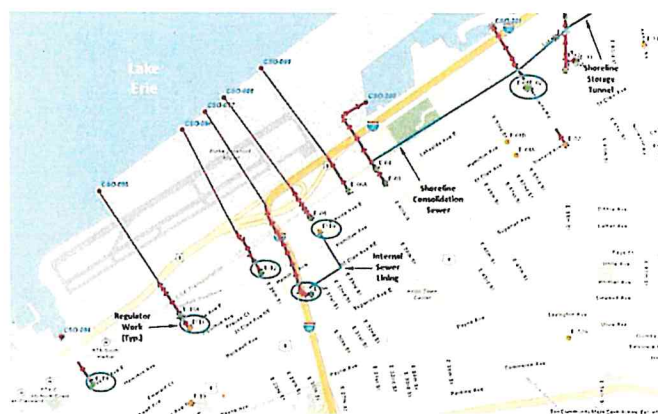
SHORELINE CONSOLIDATION SEWER & E-09 CSO CONTROL AND RELIEF SEWER PROJECT

DESCRIPTION

The Shoreline Consolidation Sewer & E-09 CSO Control and Relief Sewer project (SCS) is part of Project Clean Lake, a \$3B, 25-year program NEORSD began in 2011 designed to meet Clean Water Act standards and address water quality issues. The SCS project will reduce wet weather combined sewer overflows (CSOs) released into Lake Erie in the Greater Cleveland area by about 202.7 million gallons (MG) in a typical year.

At this time, the SCS project is anticipated to include the following:

- A 5,100 LF soft ground micro-tunnel parallel to, and north of, the CSX railroad corridor north of Lakeside Avenue from East 40th Street to East 55th Street, where it will connect to the Shoreline Storage Tunnel. It will convey wet weather flow diverted from CSO 200.
- Internal lining of 2,200 LF of brick sewer ranging in size from No. 2 to No. 10 under St. Clair Avenue and East 33rd Street.
- Modification/replacement of regulators associated with CSOs 094, 095, 096, 097, 098 and 201. These regulators are located from East 12th Street to Marquette Street and are generally north of St. Clair Avenue



PROJECT BENEFITS

The improvements brought by the SCS project to the combined sewer system will greatly reduce the volume and frequency of wet weather CSOs to Lake Erie, thereby helping to improve Lake Erie water quality. The SCS project will reduce the annual frequency of overflows at 8 CSOs to two events (CSO 200) or three events (CSOs 093, 094, 095, 096, 097, 098 and 201) in a typical year and will reduce the annual volume of combined sewage released to Lake Erie by these 8 CSOs from 208.1 million gallons to about 5.4 million gallons in a typical year.

CONSTRUCTION COST:

\$47 Million (Est.)

STATUS:

Design started in November 2019

SCS Project Schedule						
Project Phase	Year					
	2019	2020	2021	2022	2023	2024
Design		■	■	■	■	
Bidding				■		
Construction				■	■	■