

City Planning Commission On-Call Services Contract



CITY OF CLEVELAND

Mayor Justin M. Bibb

Purpose and Goals

- **Purpose: retain professional planning, design, engineering, and engagement services to deploy strategically in support of additional planning and implementing priority projects across the city.**
 - Currently: gap between plans done by the Commission or community partners and implementation: preliminary roadway engineering, detailed site analysis, grant writing, etc.
- **Goals:**
 - **To strategically implement elements of adopted plans that require additional professional skills.**
 - **To assist city planners in more directly conducting planning in collaboration with neighborhood residents and other stakeholders.**





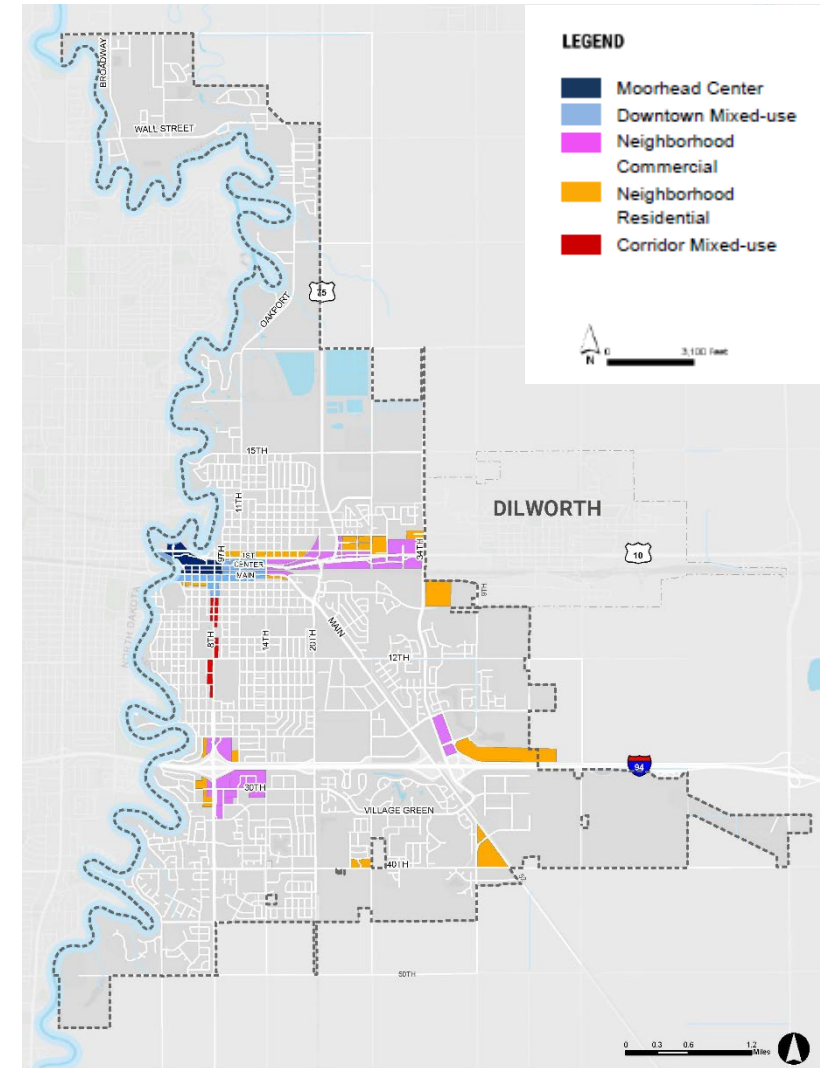
▶ Task Order Examples



Small Area Plan/Strategic Zoning Change Example

Moorhead Comprehensive Plan

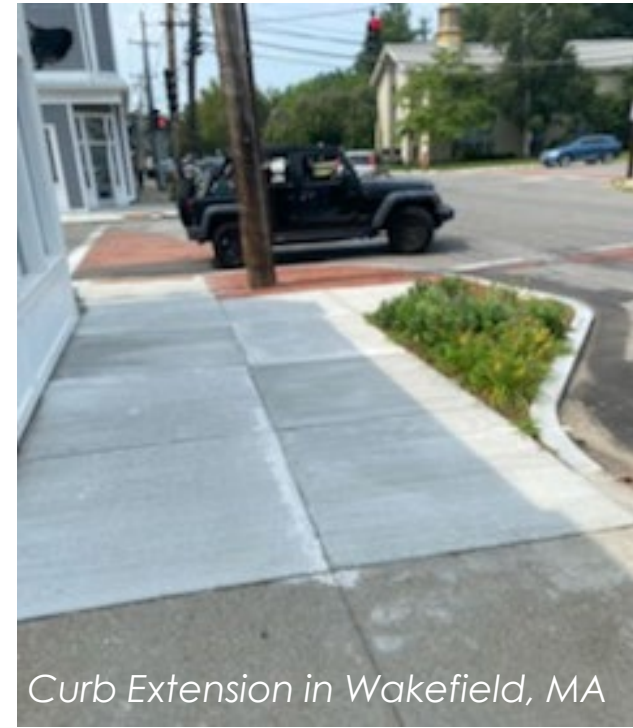
- Competitive RFP, issued as a task order
- Stantec followed up with a \$6,000 task order for a zoning comparison analysis of mixed-use districts





Multimodal and Transportation Examples

- MassDOT Shared Streets and Spaces Program developed quick-build designs for trails, bus stops, and sidewalk improvements
- *Pandemic-funded projects – available for cities to tap into for help on quick task orders/projects*



Curb Extension in Wakefield, MA



Trail in Middleton, MA

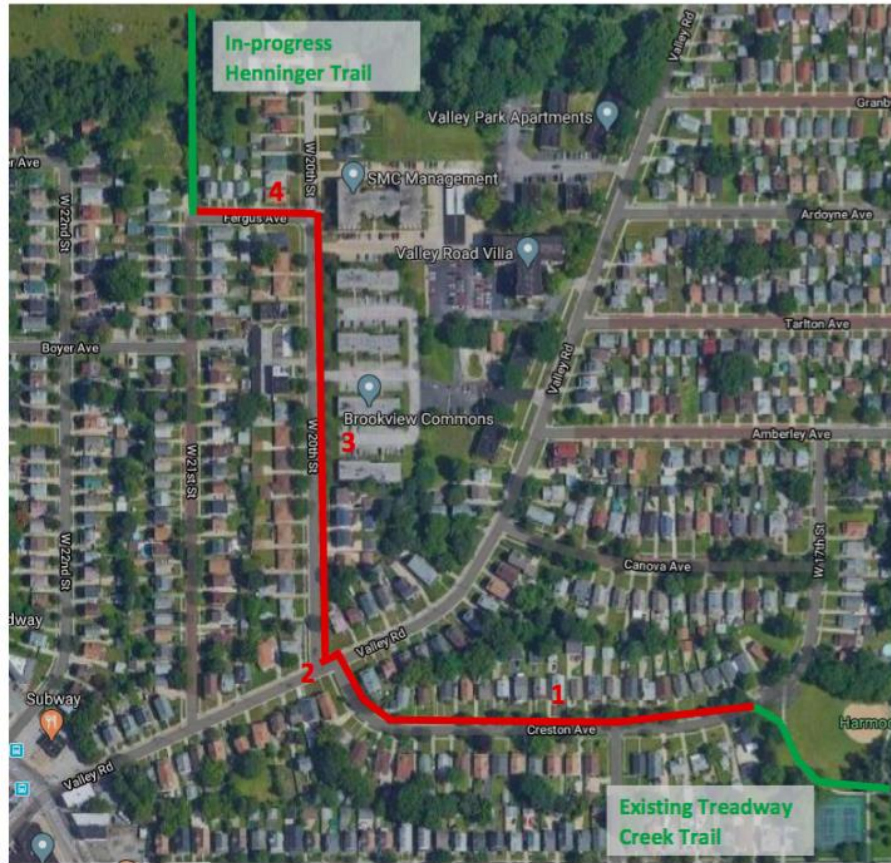


Bus Shelter in Amherst, MA



Road Diet/Outdoor Dining in Plymouth, MA

Multi-modal/transportation planning and preliminary engineering - Greenways



Waterloo & E156th

Legend

Option for pavement art and planters

Flexible posts

10-11'
lane widths

Hardened centerline

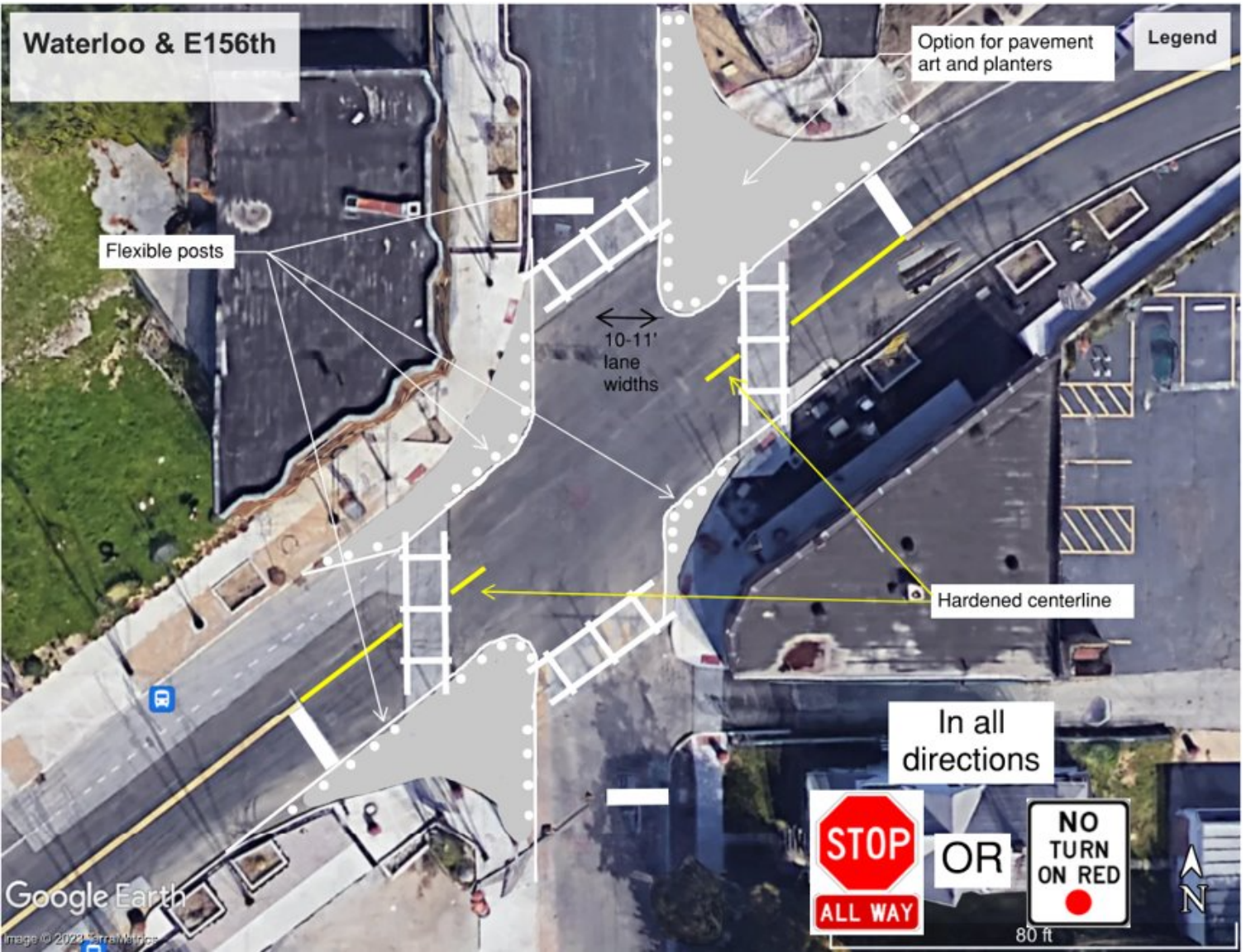
In all directions



OR



80 ft



Waterloo & E156th

Option for pavement art and planters

Legend

Flexible posts

12-14' Lanes

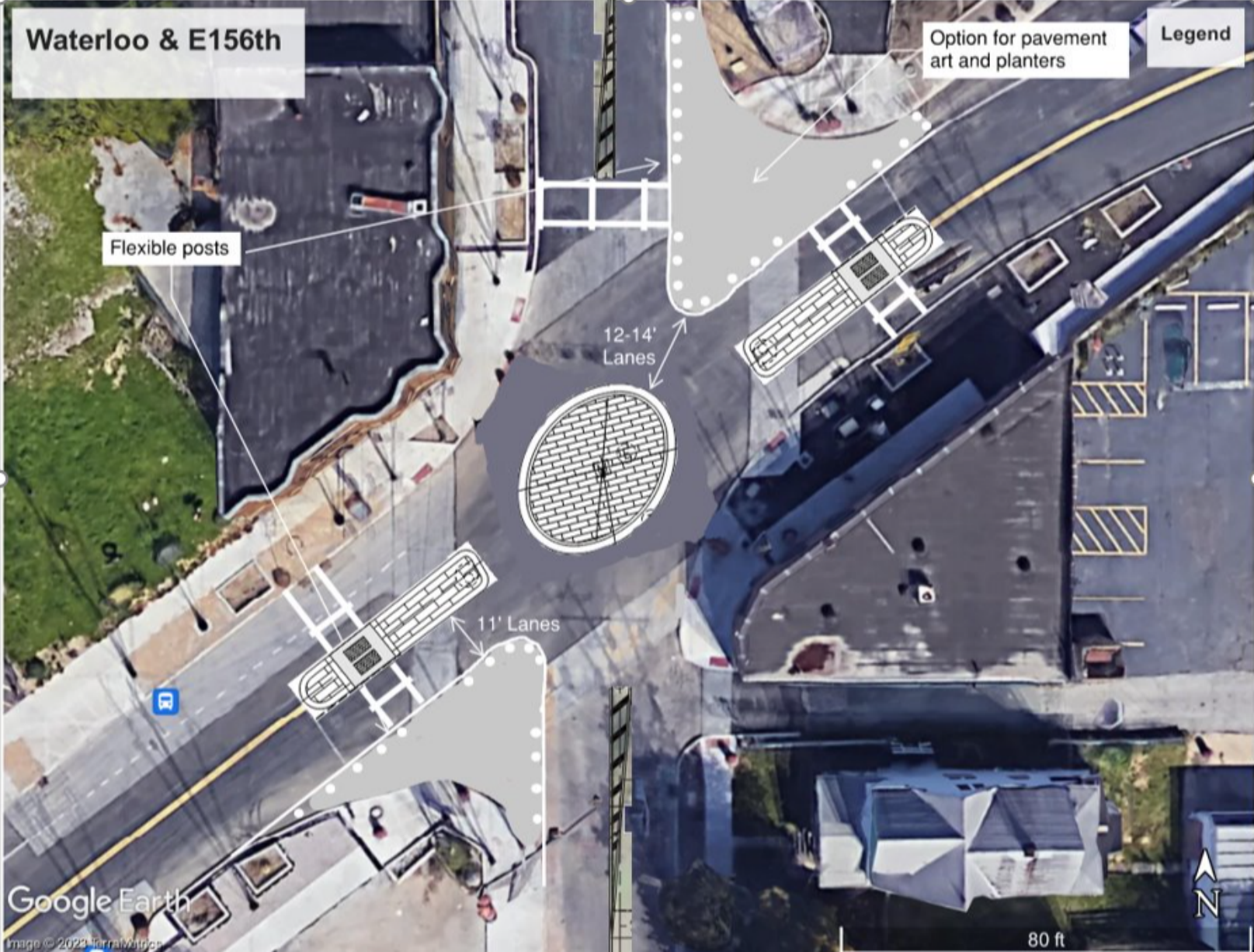
11' Lanes



Google Earth

Image © 2023 TerraMetrics

80 ft



Multi-modal/transportation planning and preliminary engineering – non-capital projects



Architecture – form-based code mapping

B. MASSING



1. Building	Sec. 2.2.11
A Height (max stories/feet)	4/55'
B Width (max)	275'
C Active depth (min)	9'
Dwelling units per building (max)	Unlimited
2. Story Height	Sec. 2.2.12
D Ground story height (min)	10'
E Ground floor elevation (min/max)	2'/5.5'

	Primary St.	Side St.
3. Windows	Sec. 2.2.13	
F Ground story (min)	35%	30%
G Upper story (min)	15%	15%
H Blank wall width (max)	15'	25'
4. Doors	Sec. 2.2.14	
I Street-facing entry spacing (max)	40'	60'



Graphic Design/Communication

RESIDENTIAL
DESIGN
GUIDELINES

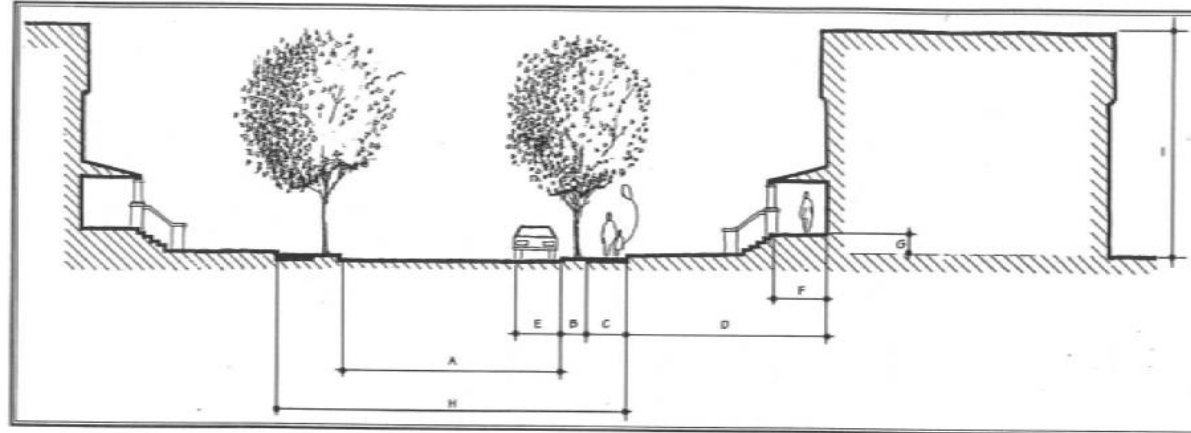
CITY
OF
CLEVELAND

II
HISTORICAL/ARCHITECTURAL
NEIGHBORHOOD ANALYSIS

CITY PLANNING
COMMISSION
581 LAUREL AVENUE
ROOM 501
CLEVELAND, OHIO 44114

12

II HISTORICAL/ARCHITECTURAL NEIGHBORHOOD ANALYSIS



Streetscape Analysis

- | | |
|--|--|
| <p>A. Street: -is a public road, within the urban area, usually paved and is laid out in intersecting grids
-the width may vary depending on traffic volume and location
-typical neighborhood streets range in width, from 10'-0" Alley to 26'-0" Local Street</p> | <p>E. On-street Parking: -generally, parallel parking that occurs along one side of any Local Street having a minimum width of 26'-0"</p> |
| <p>B. Tree lawn: -a strip of grass varying in width, and generally running the length of the front portion of the property
-its function is to separate the vehicular street from the pedestrian sidewalk, and aid in softening the streetscape</p> | <p>F. Porch: -generally a raised exterior, semi-private structure attached to the front of a house varying in width and length (generally a min. Of 50% of structure's frontage
-structure usually has a roof (gabled, hipped etc...)</p> |
| <p>C. Sidewalk: -continuous concrete or natural stone pedestrian walkways
-width may vary within a given block and neighborhood, but are typically 4'-0" to 5'-0"</p> | <p>G. Foundation: -that portion of the building foundation wall that extends above the ground, giving the first floor a distinct sense of importance in comparison to the ground.</p> |
| <p>D. Setback: -a given dimension establishing the distance a house is relative to the property line (primary concern the front property line)</p> | <p>H. Right of Way: -the combined areas of the street, the tree lawns and the sidewalk separating the two properties on either side of the street -typically, this area is under the city's jurisdiction</p> |
| | <p>I. Building Height: -the actual height of a building from the ground plan to the upper most portion of the structure</p> |

19





Grant Writing Support

RAISE Grants

- Roxbury Resilient Transportation Corridors (Resiliency) → **\$20 million**
- Blue Hill Avenue Multimodal Corridor (Bus rapid transit) → **\$25 million**

Safe Streets for All

- Safety at Key Intersections in Boston (High-crash locations) → **\$9 million**

Reconnecting Communities

- Reconnecting Chinatown (Reintegrating community) → **\$2 million**

Stantec has secured over **\$45 million** for the City of Boston



A park over the Pike in Chinatown? Boston officials are looking into it.

The city won a federal grant to study a park **B** over the Mass. Turnpike and rail lines in Chinatown.

By Catherine Carlock | Globe Staff, Updated March 22, 2023, 5:33 a.m.

✉️ 🌐 🐦 🗑️ 💬 66



Team Introductions



Beth Elliott

Project Manager
Stantec



Craig Suehrstedt

Local Advisor
Stantec



Ralph DeNisco

Lead Mobility Planner
Stantec



David Jurca

Lead Engagement Strategy
Seventh Hill



Key Staff and Discipline Leads



Craig Sklenar

Client Services Manager
Stantec



Tom Young

Lead Urban Designer/Design
Guidelines
Stantec



Erin Perdu

Form-based Design Guidance/
Planning and Zoning
Stantec



Bryan Zundel

Lead Landscape Architect
Stantec



Rhonda Bell

Lead Transportation Planner
Stantec



Tom Leighton

Lead Housing and Economic
Development Analyst
Stantec



Adam O'Brien

Lead Architect
Stantec



John Verikakis

Lead Estimator
Regency Construction



Collaboration

Seventh Hill partners regularly with a diverse team of independent contractors with specialized skills.



Katie Parland
AGNES STUDIO



Danielle Rini Uva
AGNES STUDIO



Jamal Collins
CREATIVE KIDS GROUP



Josiah Britt
COLLECTIVEXPRESS



Diane Howard
ENGAGEMENT SPECIALIST



Benjamin Herring
PAADG STUDIO



Roberta Duarte
AREKO CONSULTING



La Queta Worley
ENGAGEMENT SPECIALIST



Ronnetta Stallworth
ENGAGEMENT SPECIALIST



Sonia Matis
ENGAGEMENT SPECIALIST



Jordan Wright
EVENT DESIGNER



Ariel Vergez
ARTIST



Jacinda Walker
DESIGNEXPLORR