

Ord. No. 8-2021

Otis Lithograph Company Building  
Perspectus Architecture for Robert Kanner



7,200sf mtl bldg

7,800sf mtl bldg

72,000sf open space

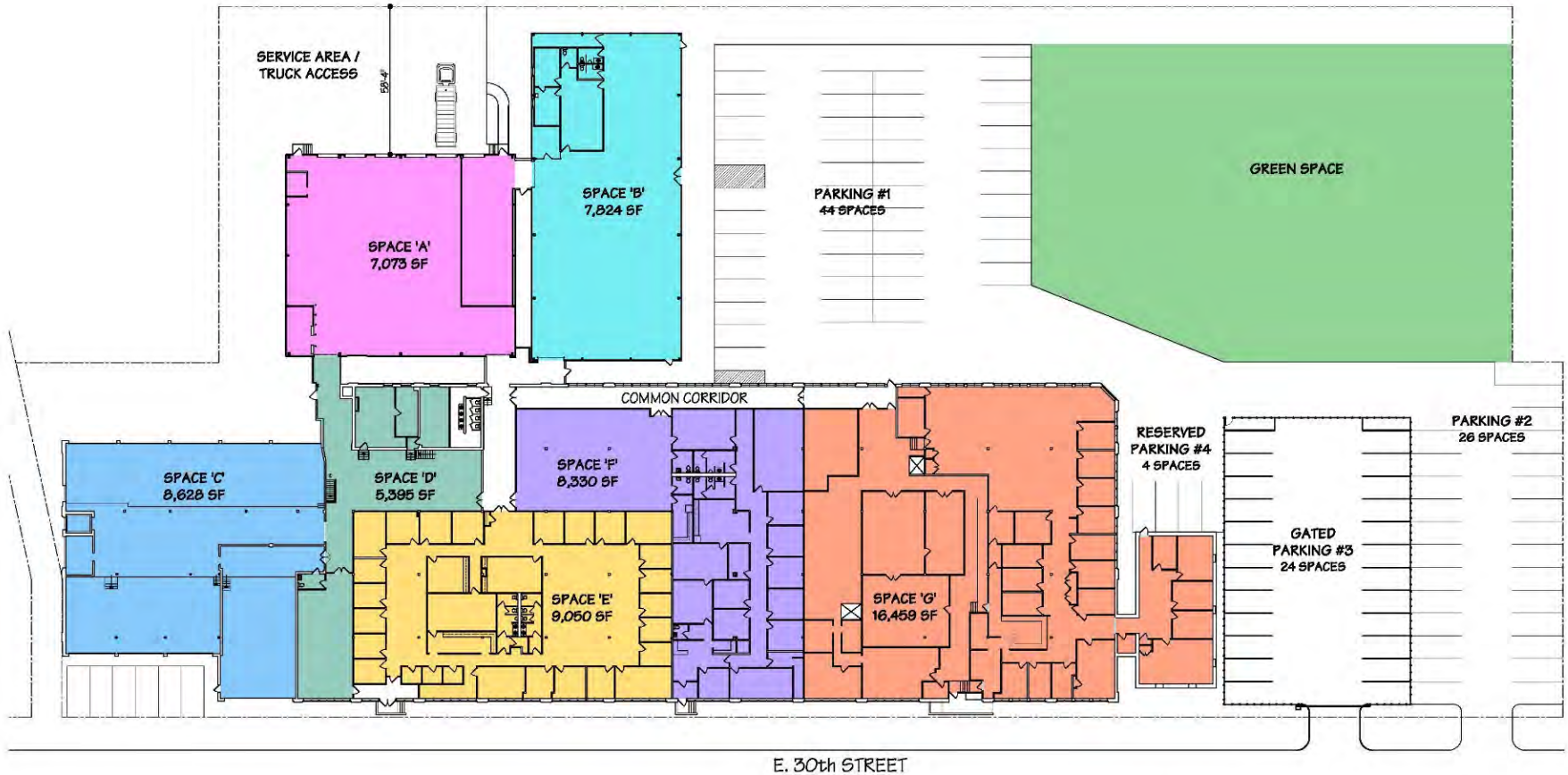
Payne Ave.

E 30th St.

1st Floor 47,800sf  
Basement: 7,500sf

2,000sf addition

Otis Lithograph Company Building Site Plan



**METROPOLITAN  
ARCHITECTURE  
STUDIO**

2310 Superior Avenue, Suite 240  
Cleveland, Ohio 44114  
T: 216.823.0290 F: 216.823.0291  
www.metroarchstudio.com

**SPACE SUMMARY**

SPACE 'A'	7,073 SF
SPACE 'B'	7,824 SF
SPACE 'C'	8,628 SF
SPACE 'D'	5,395 SF
SPACE 'E'	9,050 SF
SPACE 'F'	10,000 SF
SPACE 'G'	16,865 SF
<b>Total Leaseable Area:</b>	<b>64,835 SF</b>

**PARKING SUMMARY**

PARKING #1	44
PARKING #2	26
PARKING #3	24
PARKING #4	4
<b>TOTAL PARKING</b>	<b>98 SPACES</b>

# EXISTING LAYOUT



0' 8' 16' 32' 64'

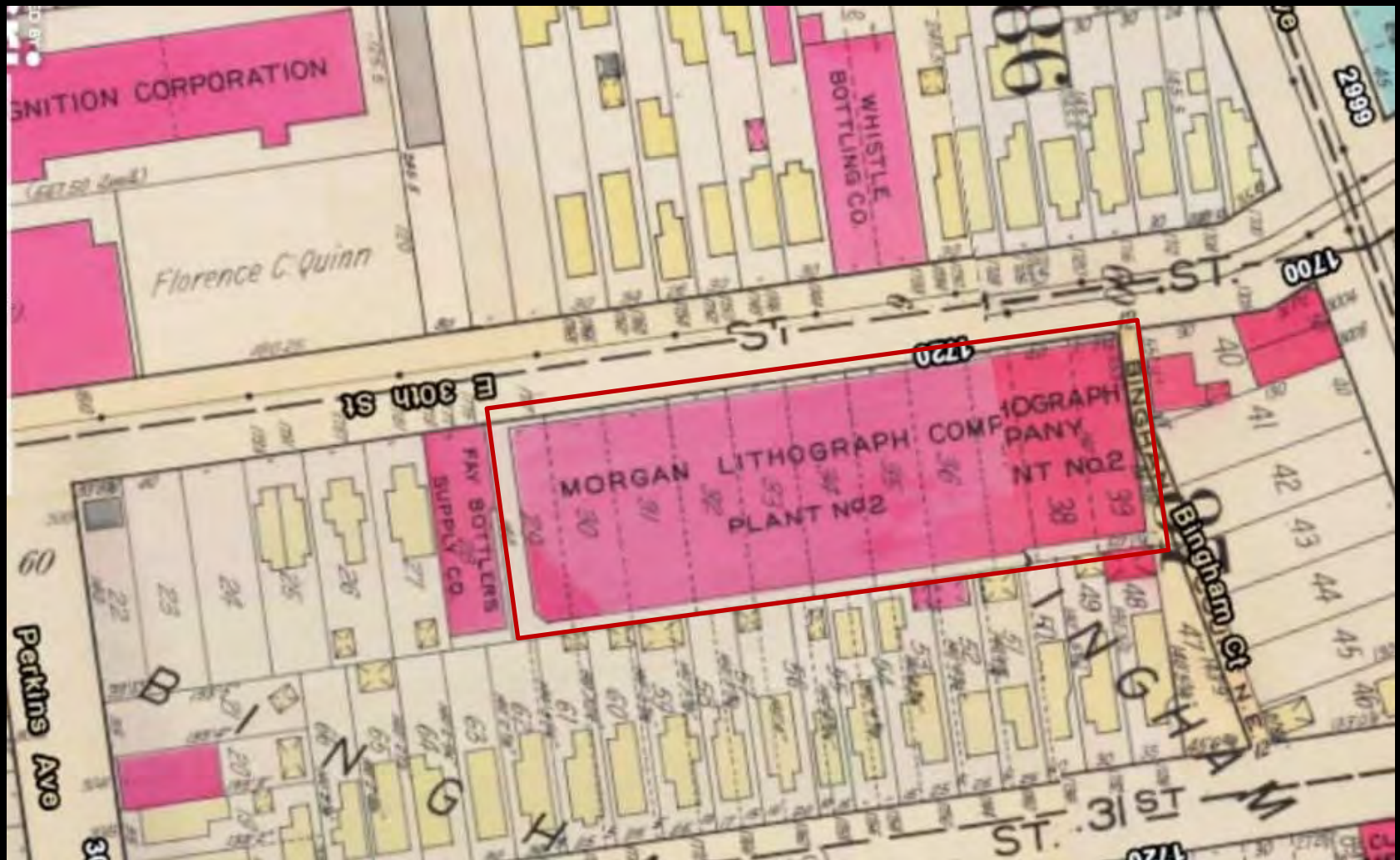
May 03, 2017



1881 Hopkins Map.  
Chester Avenue does not yet exist



1912 Sanborn Map.  
Red square indicates Otis Lithograph Company Building



1927-1937 Sanborn Map.  
Red Square Indicates Morgan Lithograph Company Building



1951 Sanborn Map  
Red Square Indicates Bonnar Vawter Fanform Company Building



West Elevation





Left image: West Elevation  
Right image: East Elevation



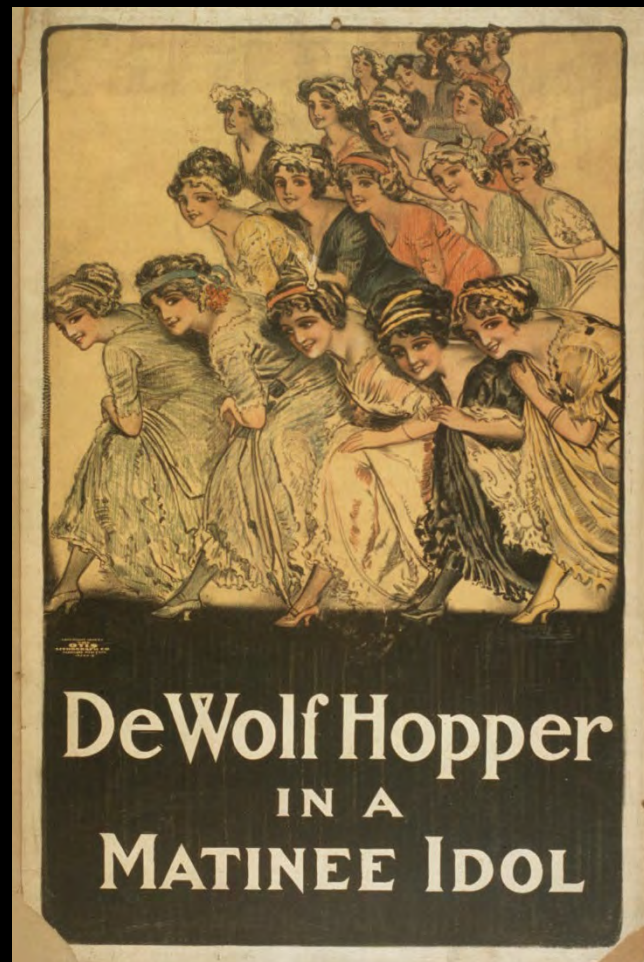
East Elevation



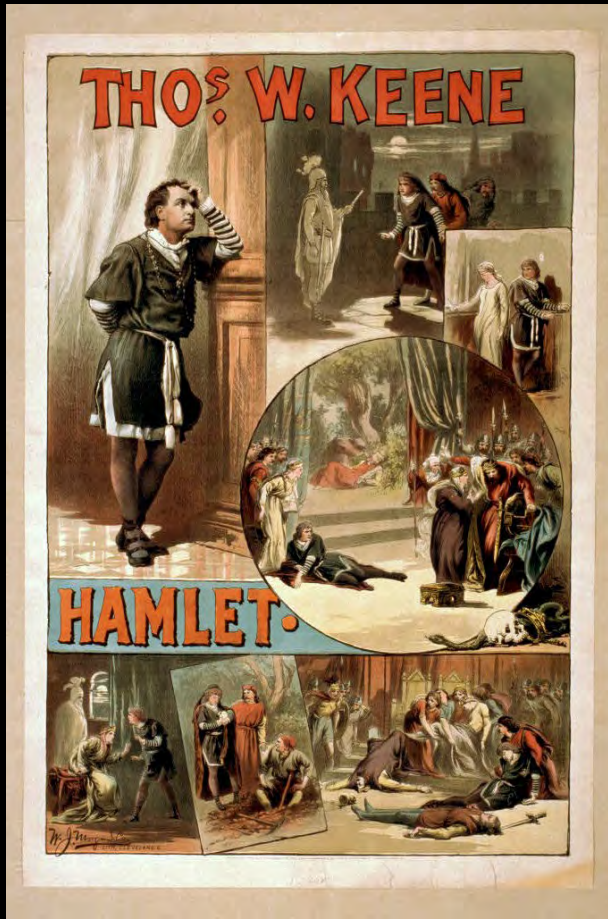
Otis Lithograph Company Building | Existing Interior



Otis Lithograph Company Building | Existing Interior



Left Image: 1898 Poster from Otis Lithography  
Middle Image: 1909 Poster from Otis Lithography  
Right Image: c1935 Poster from Otis Lithography



Left Image: 1884 Posters from Morgan Lithograph Company  
 Middle Image: 1931 Poster from Morgan Lithograph Company  
 Right Image: 1932 Poster from Morgan Lithograph Company

