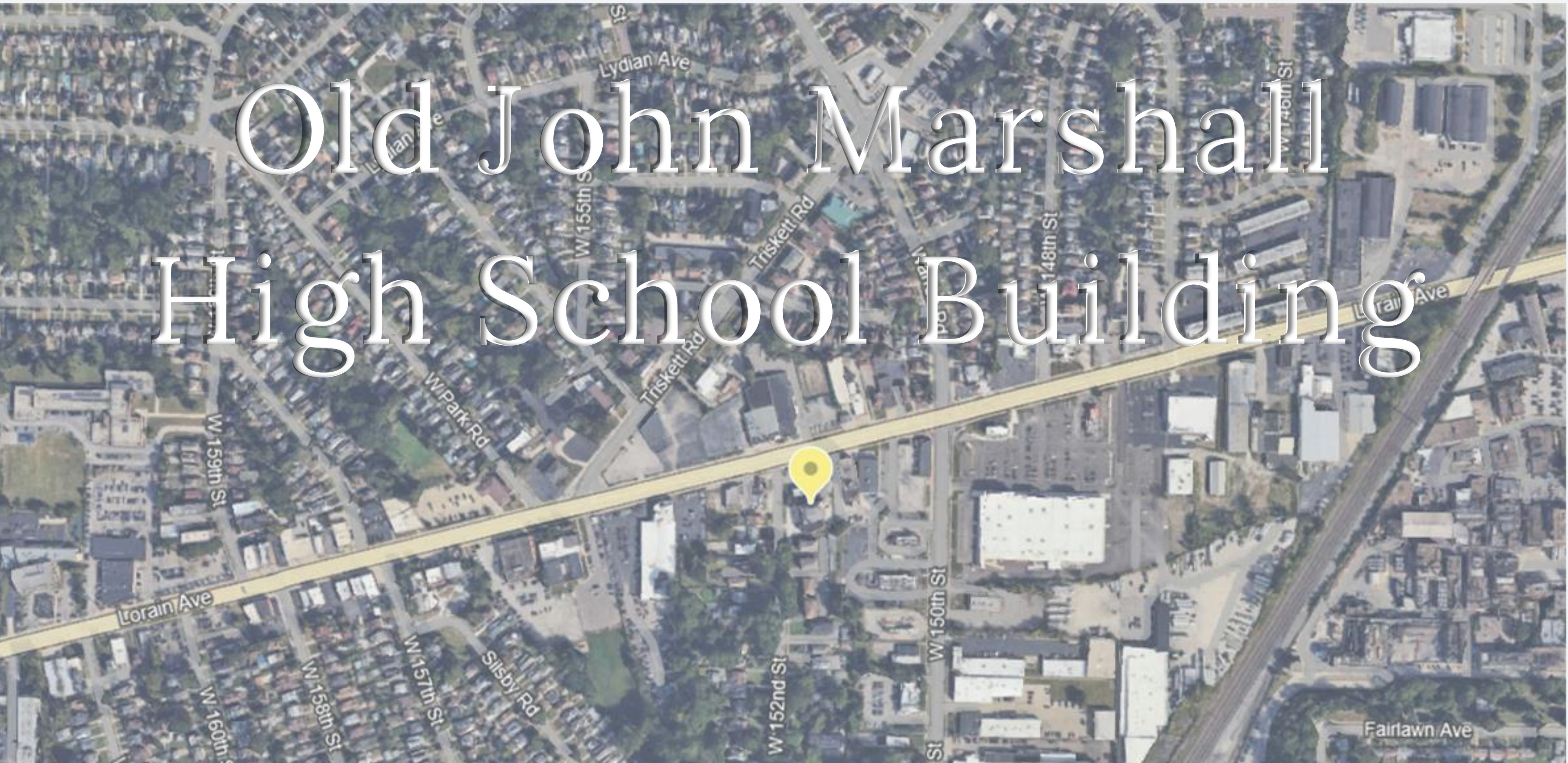
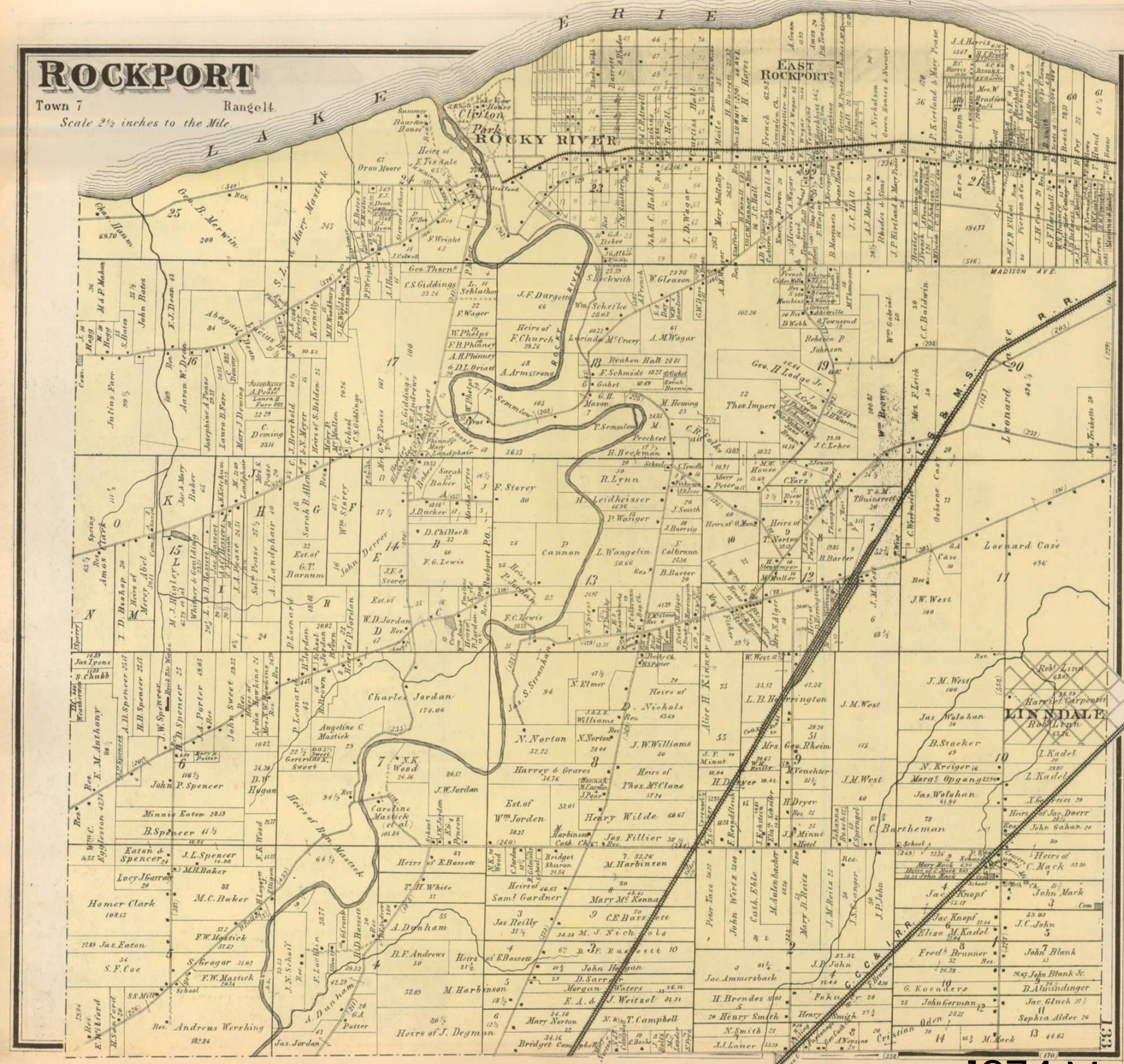


# Old John Marshall High School Building



15149 Lorain Avenue



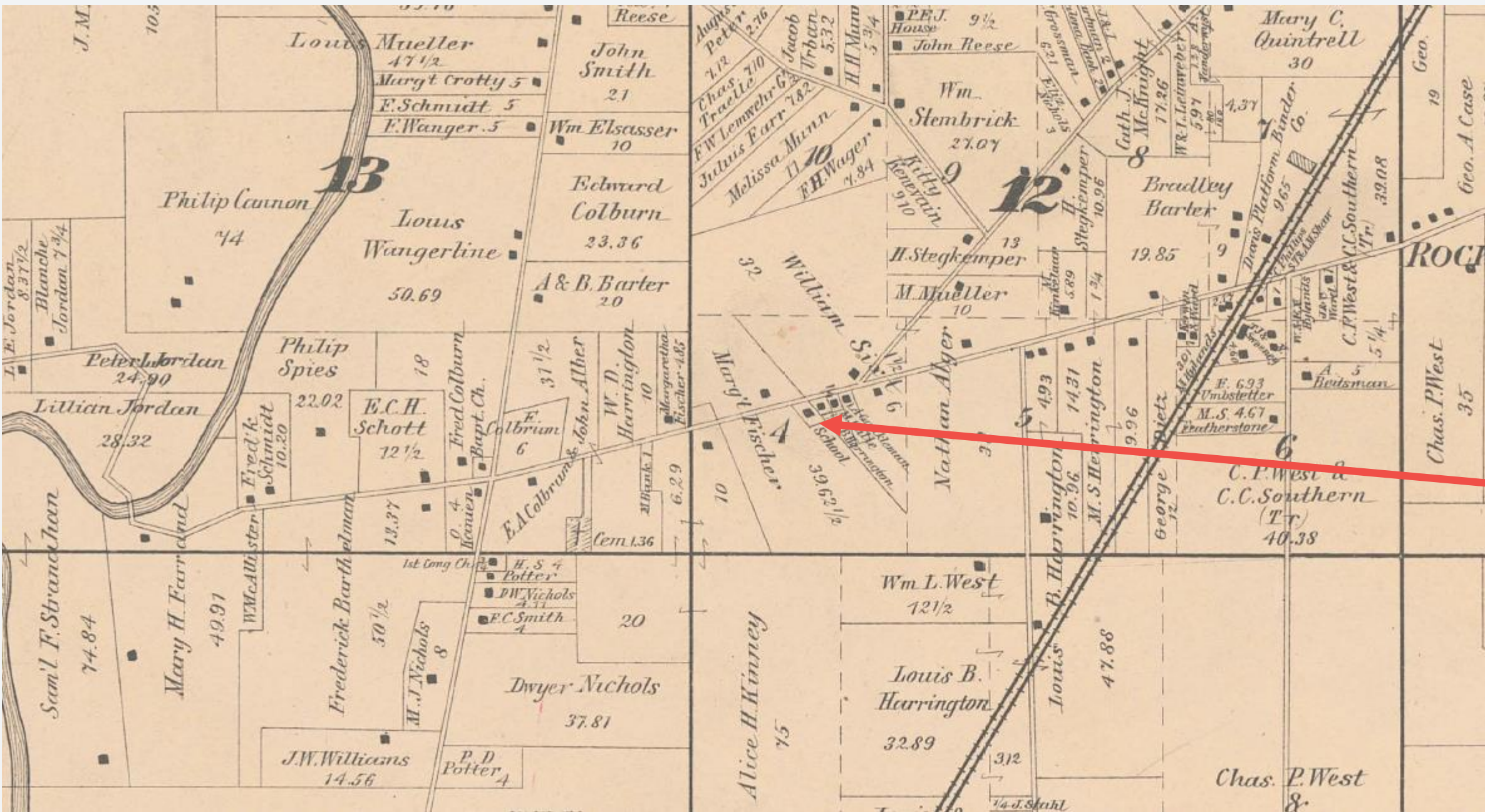


1874 Map

Rockport Township (est. 1819)



# Rockport Special School District



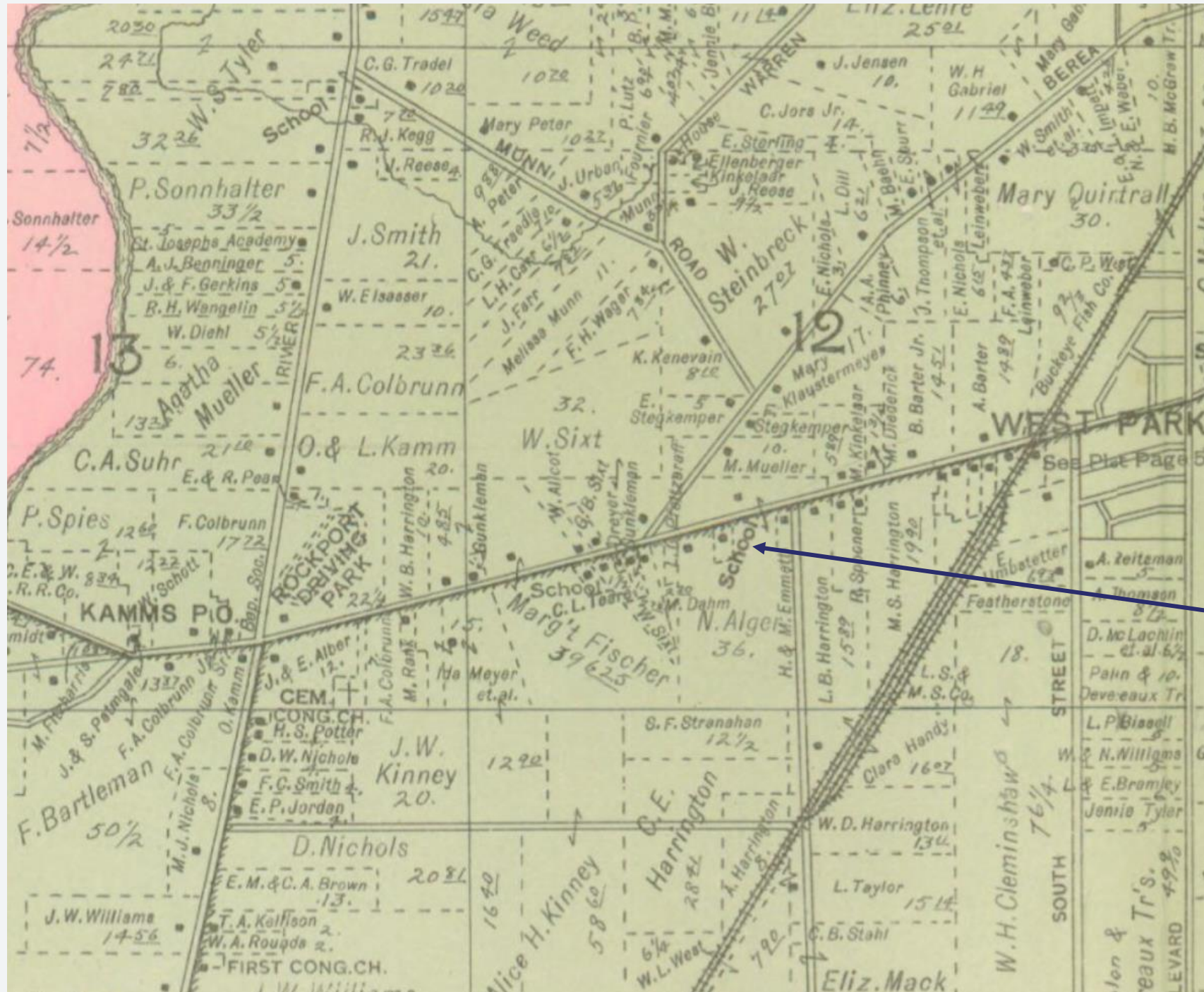
1892 Map



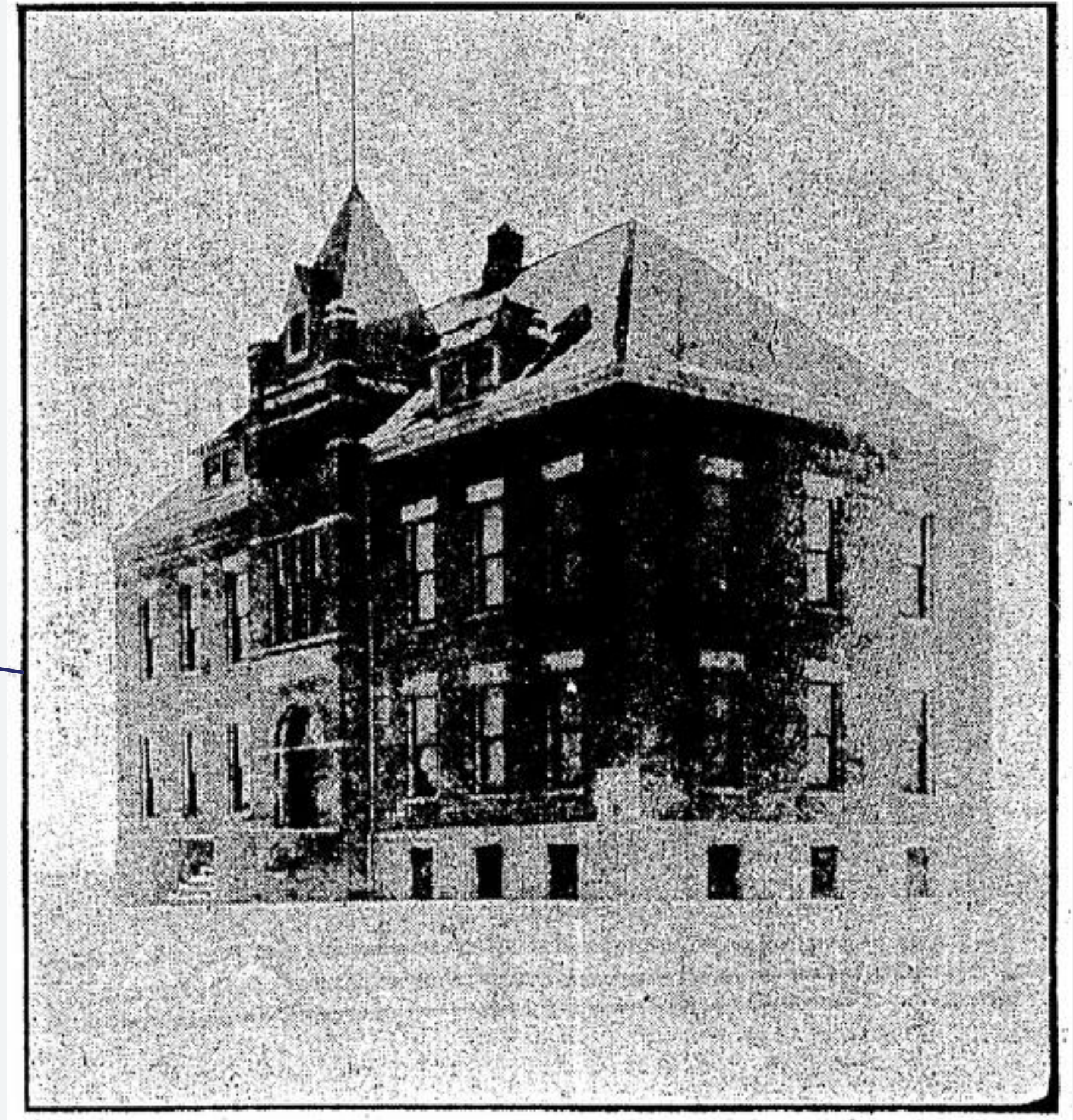
From Rockport to West Park



# Rockport Special School District



1903 Map



Built in 1899

1901 Plain Dealer





History of John Marshall High School

# Central High School (or Rockport Village High School or Lincoln High School)



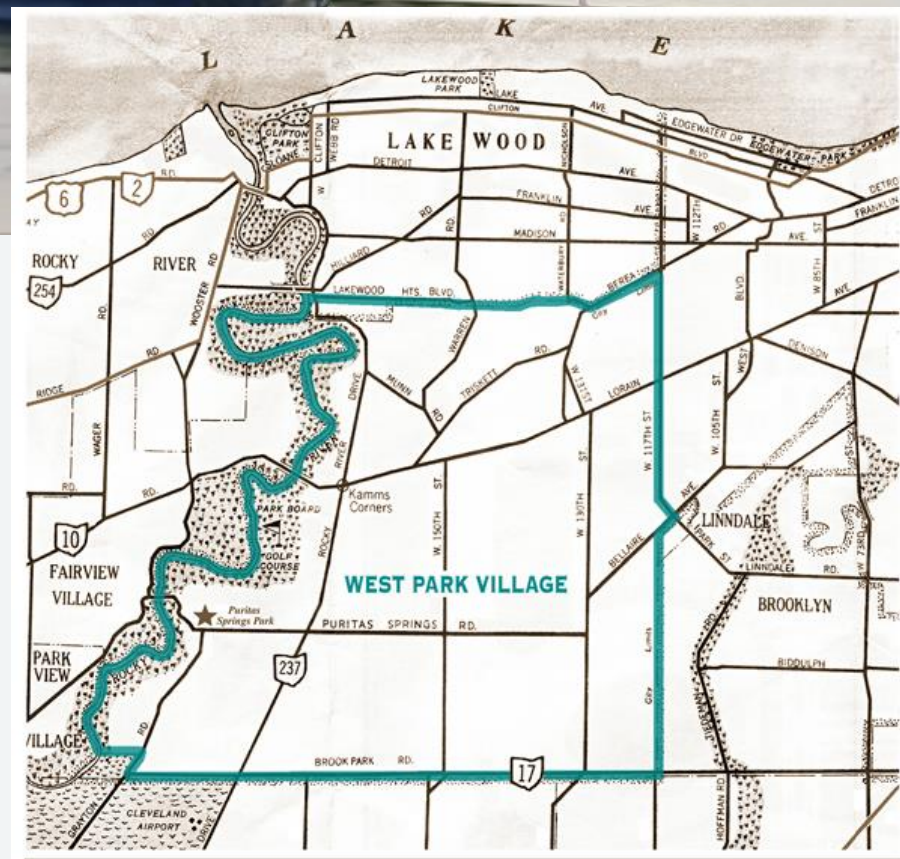
~1909 Postcard

Rockport Hamlet 1892–1902; Rockport Village 1902–1913; West Park Township

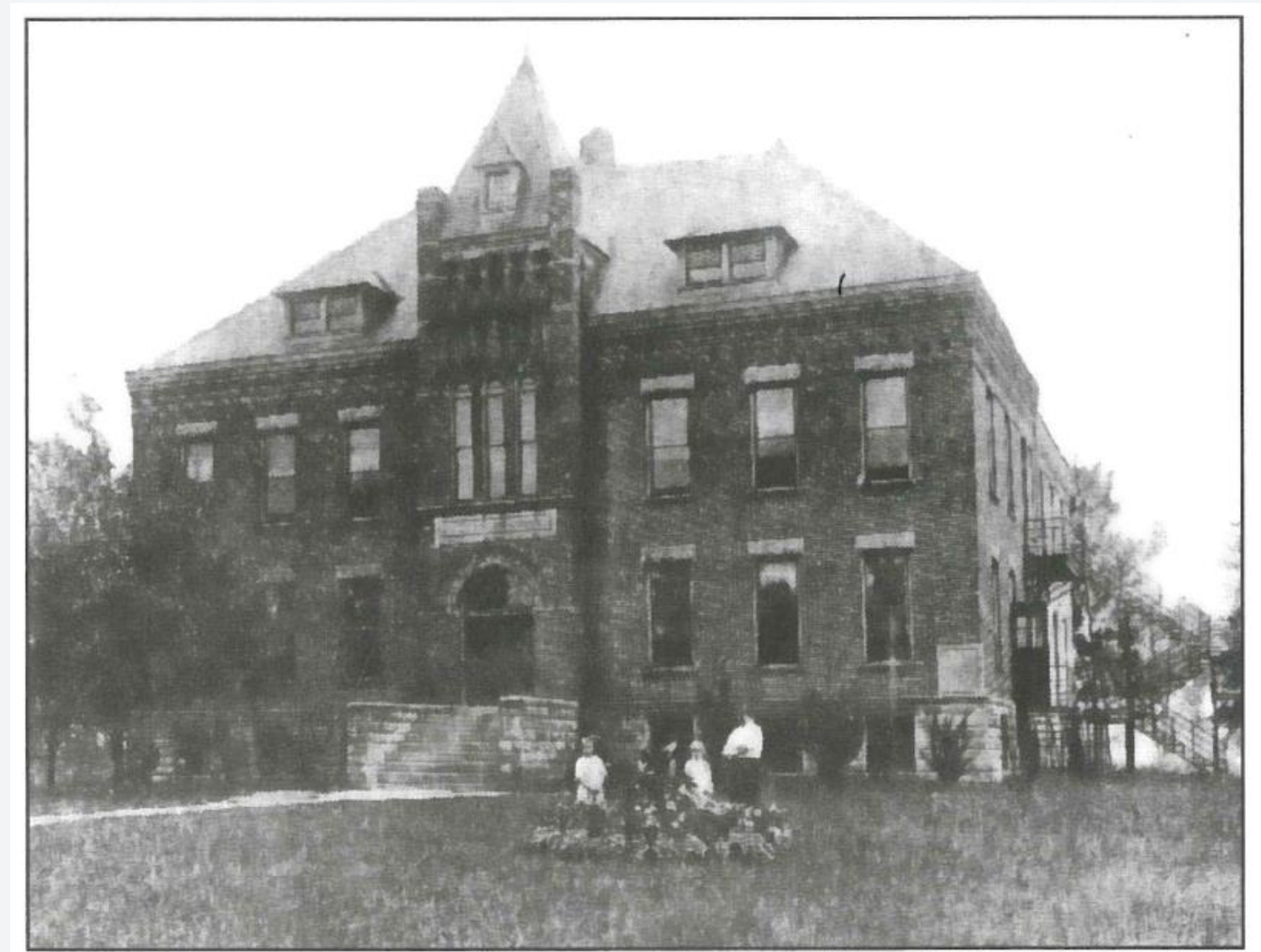




# West Park High School (or West Park Lincoln High School)

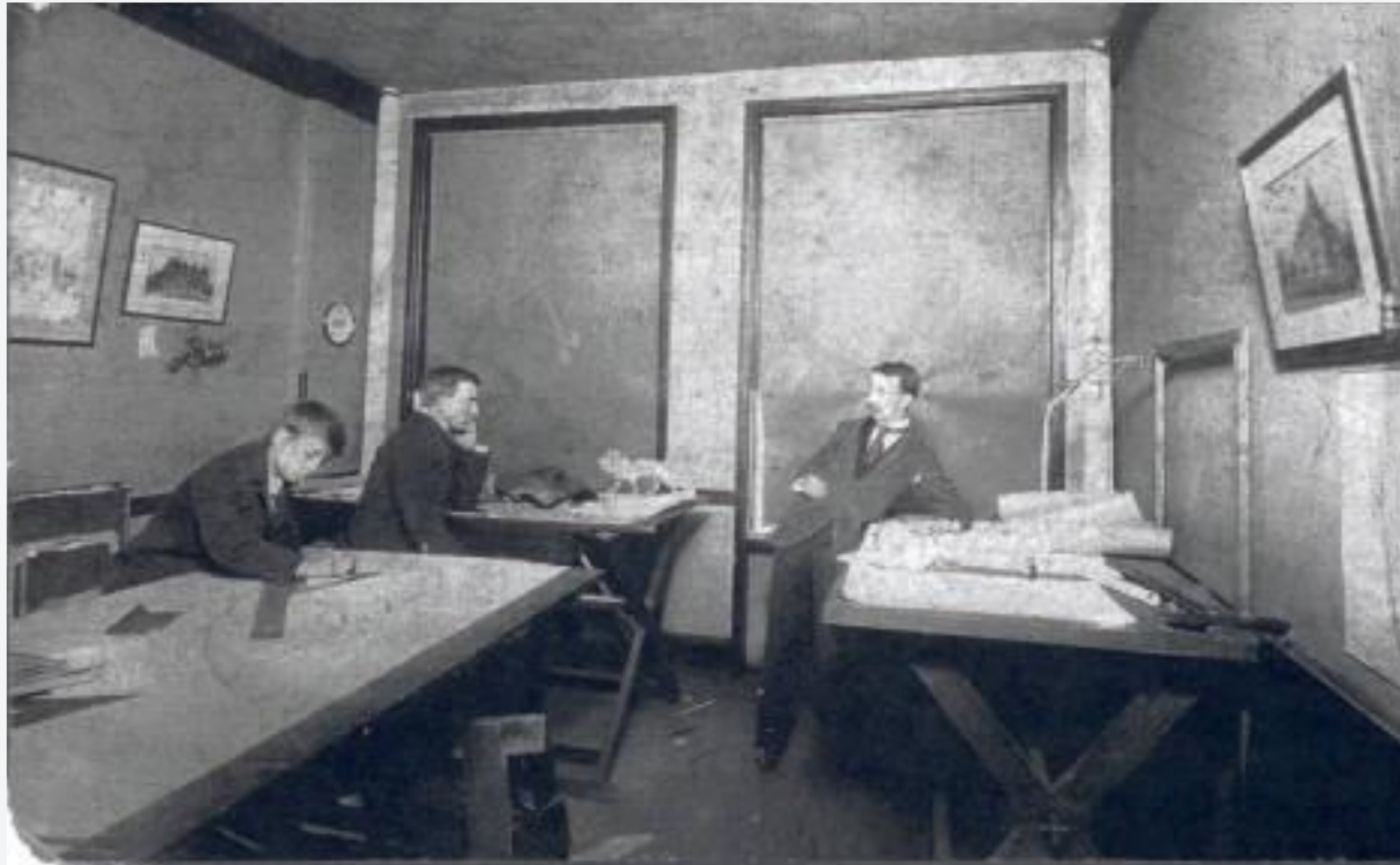


West Park Historical Society



From Rockport to West Park





Bohnard and Parsson office – CPL



Fellowship Baptist Church of Christ



West Park Town Hall – CPL

Architects

William Bohnard and Raymond Parsson

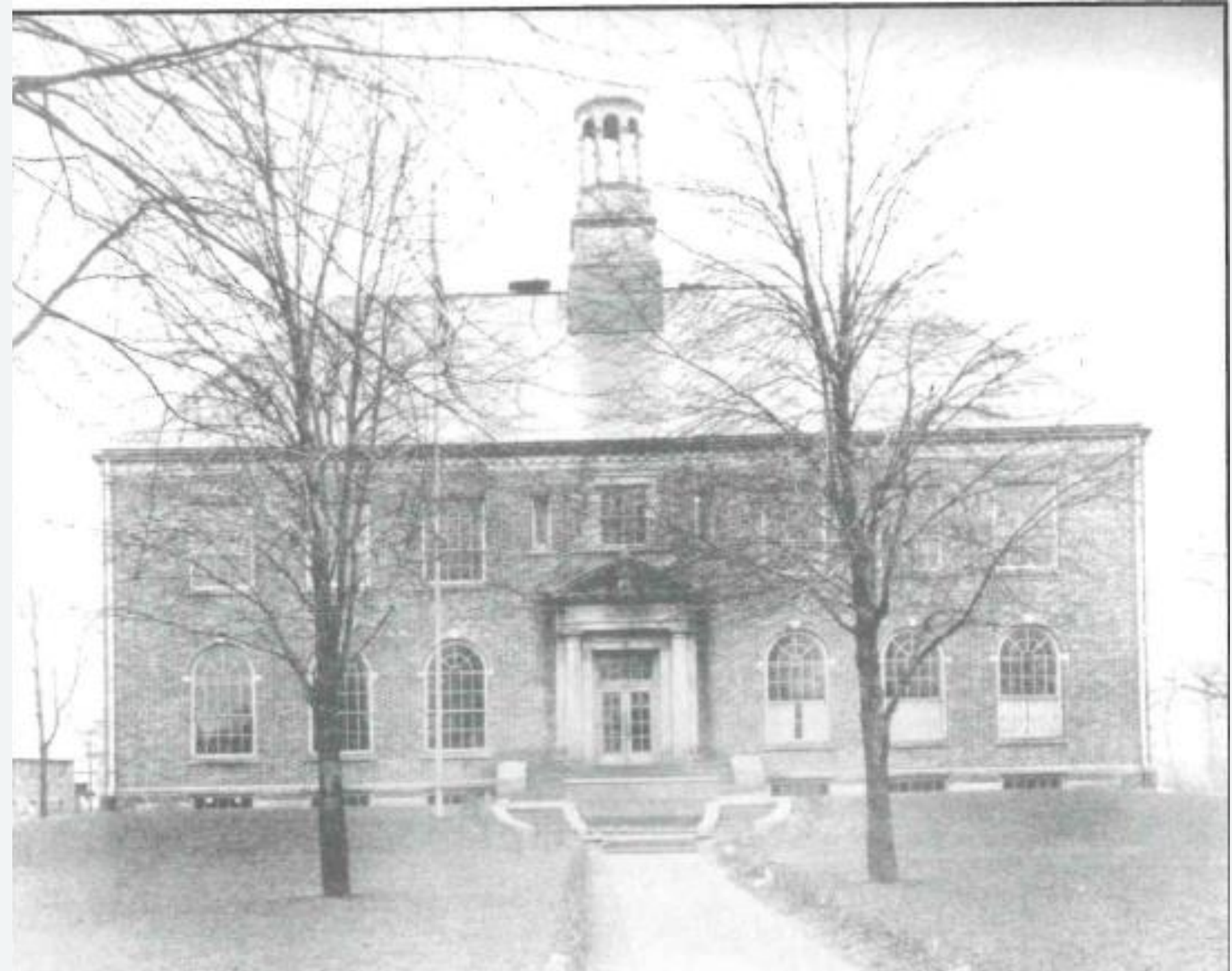


**NEW~1916**



*History of John Marshall High School*

# West Park High School



*History of John Marshall High School*

City of West Park 1921-1923



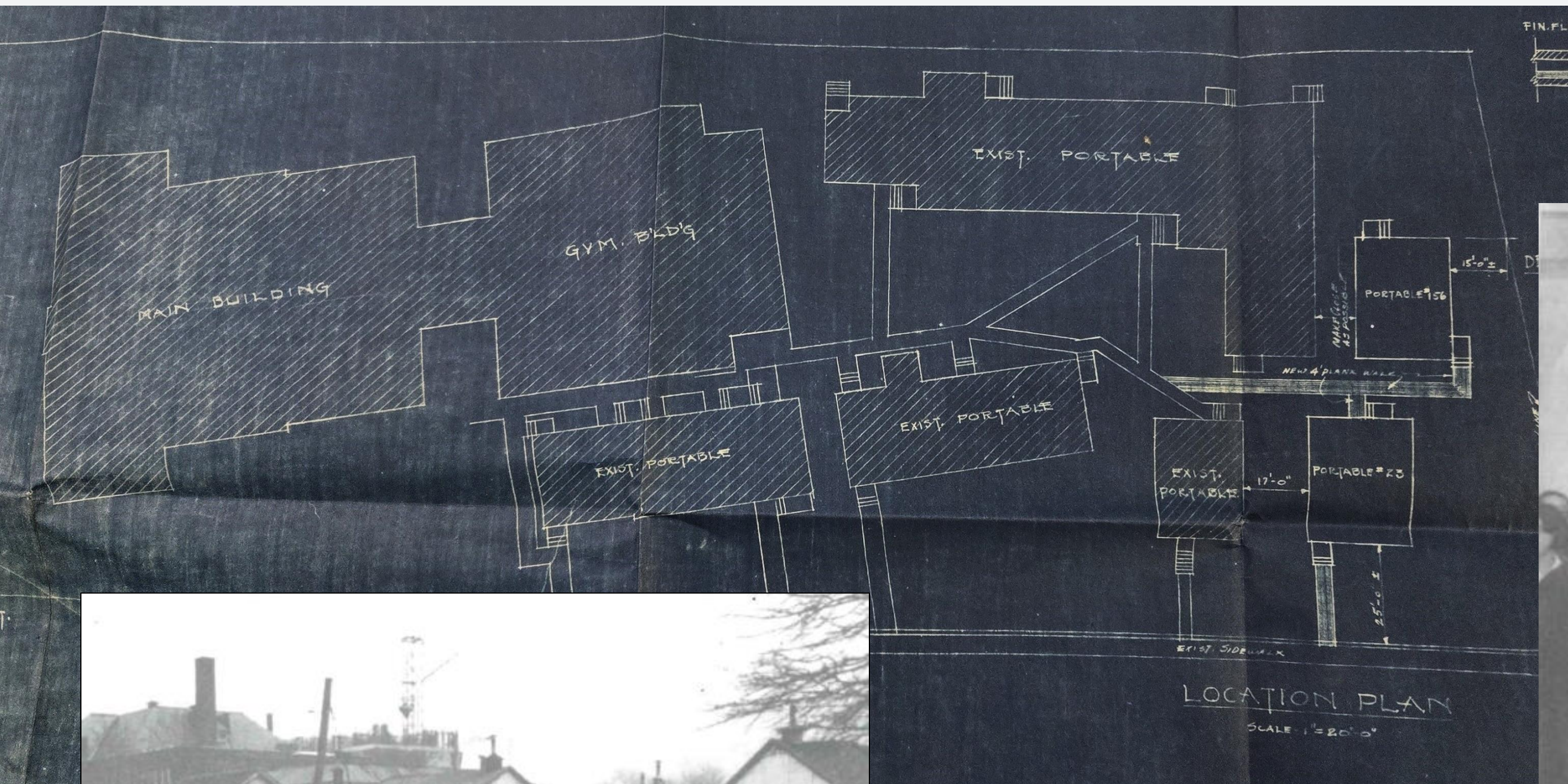
# John Marshall High School



*History of John Marshall High School*







*History of John Marshall High School*



*History of John Marshall High School*

"The school already has every spot except its front lawn filled by portables"  
 September 9, 1931 *Plain Dealer*





Under construction



2003

# The *new* John Marshall High School



Pre-2013 demolition





1932 Plain Dealer

## **Ideas for the site post-John Marshall**

Elementary School

Junior High School

War Housing

Community Space



1932 Plain Dealer



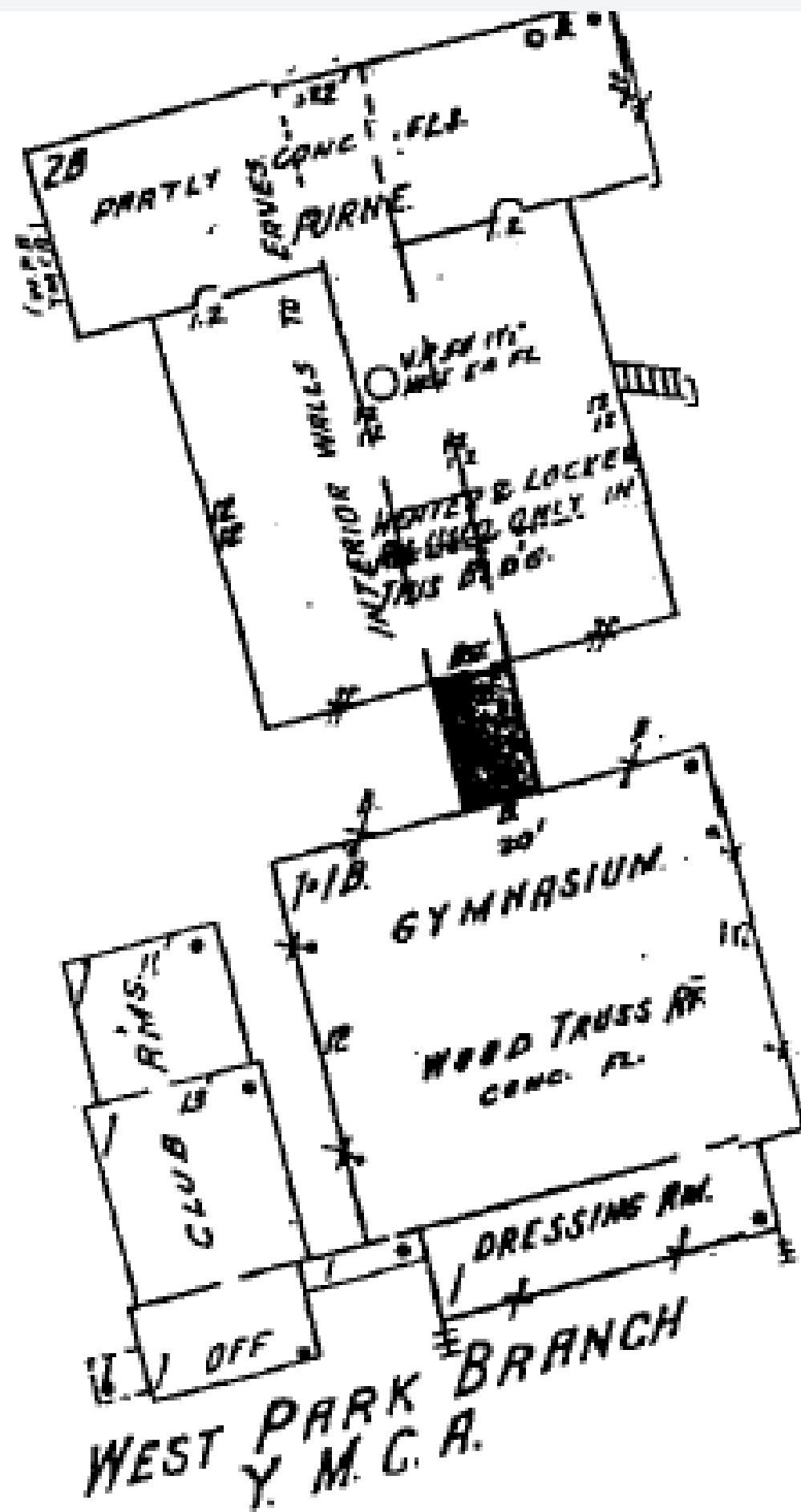
# West Park Y.M.C.A.

APPROVED a plan to permit the Y. M. C. A. to use the old John Marshall Building at Lorain Avenue and W. 152d Street for "Y" activities. The "Y" will keep the building in order, will pay no rent, will return the building to the board whenever the board needs it again for school purposes.

1935 Plain Dealer



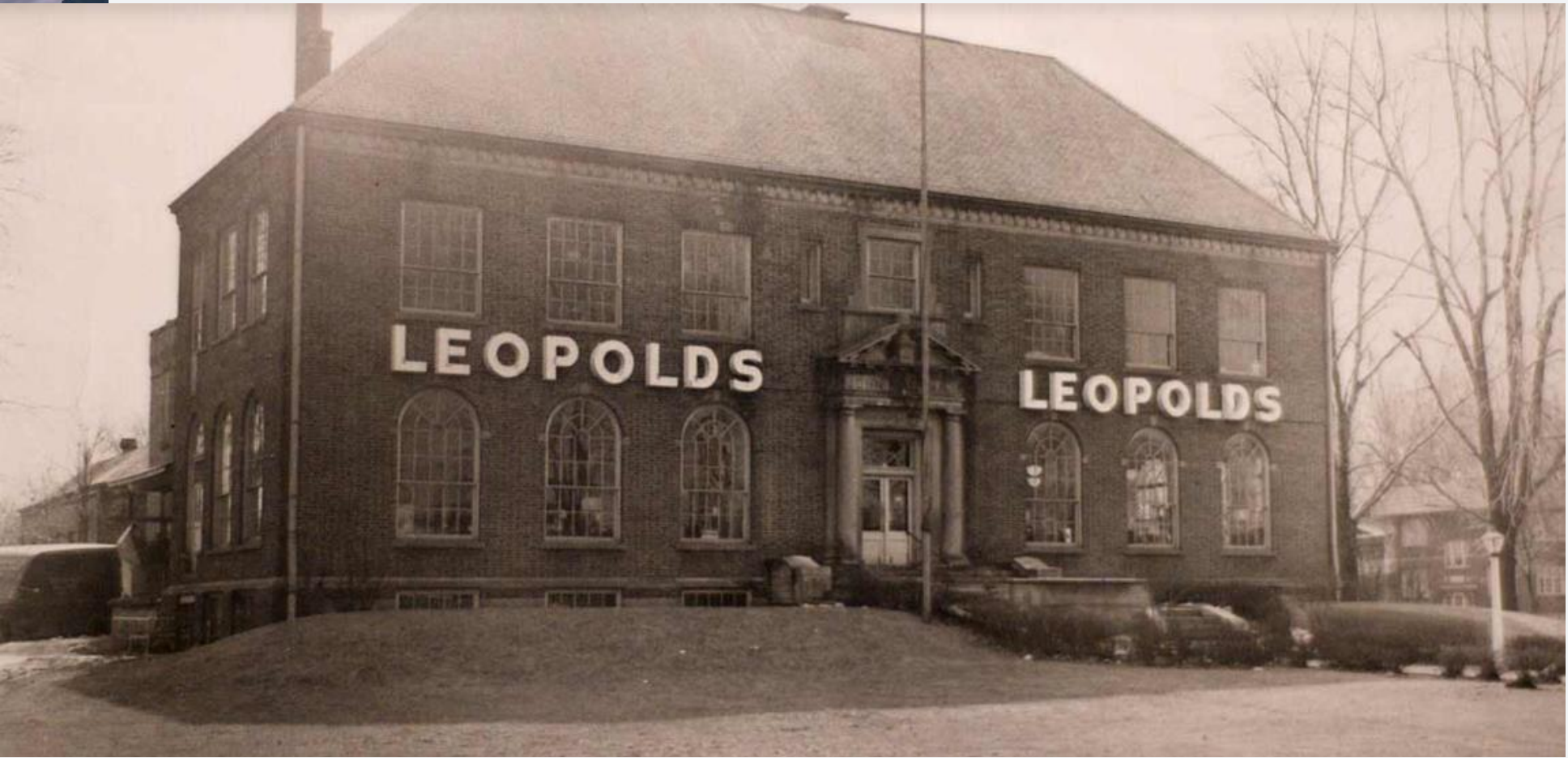
Current West Park Branch YMCA; dedicated 1957



1950 Sanborn Map



# Leopold Brothers Furniture



1950s Leopold's Fine Furnishings

**LEOPOLD'S FURNITURE**  
Art and Honesty in Every Piece.

**N**EVER in the history of Furniture have the people of Cleveland and vicinity had the chance to see, under, one roof, such an array of handsome suits and odd pieces from the Cabinet Maker's Art as we have brought out for this season's trade. Its completeness almost baffles an attempt to describe; the latest productions of the most elaborate makers in this and other countries are here in endless variety and design, in all the choicest woods and finishes. Every article in our large stock is offered at the lowest figure consistent with good work.

We offer for this week a line of **BRASS BED BARGAINS** never before equaled in Cleveland. Prices from **\$15 to \$75**

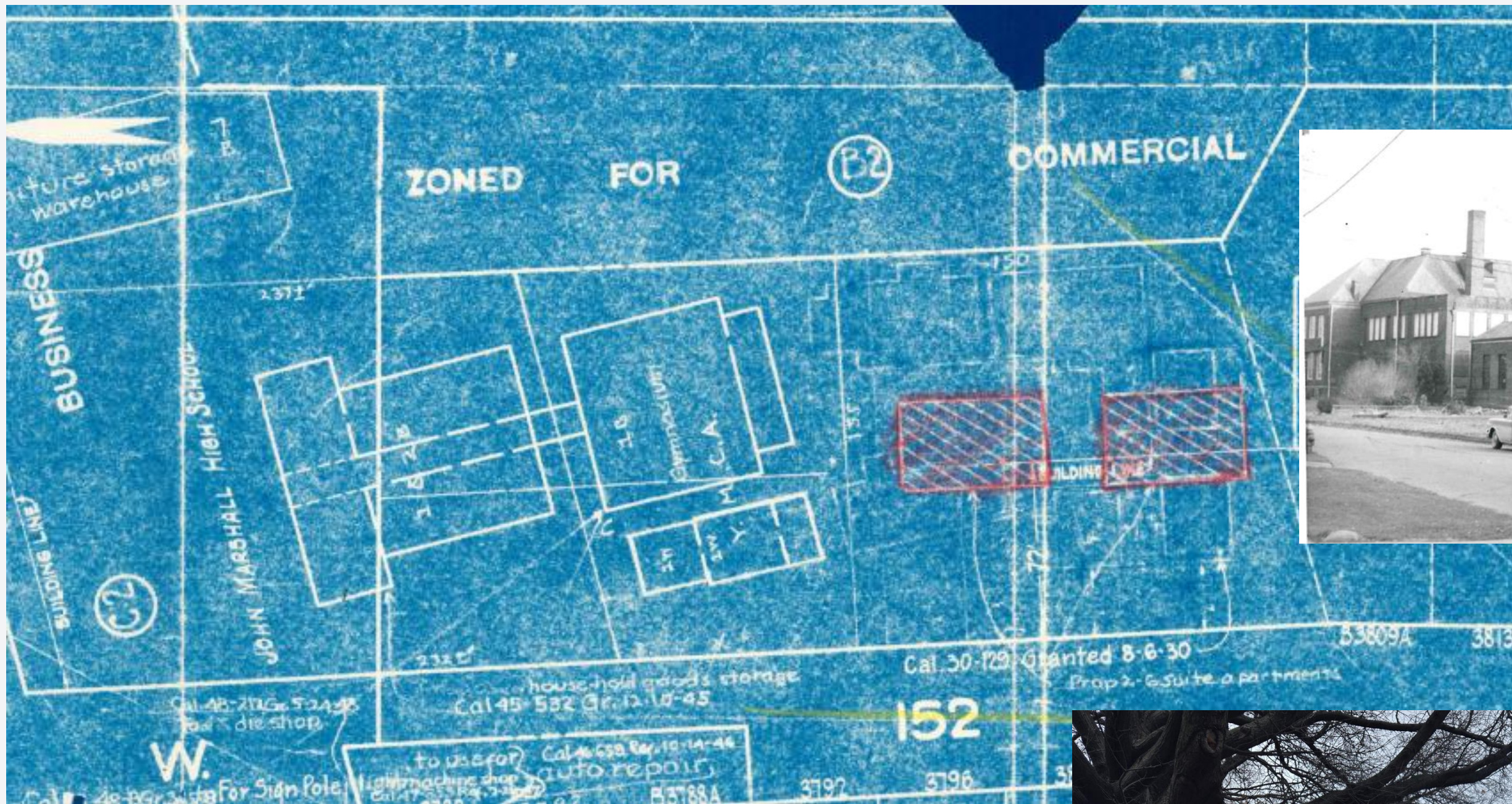
The Largest Furniture Store in Cleveland,  
**LEOPOLD'S**  
Lorain St., Cor. Rhodes.

1905 Plain Dealer



1959 Plain Dealer





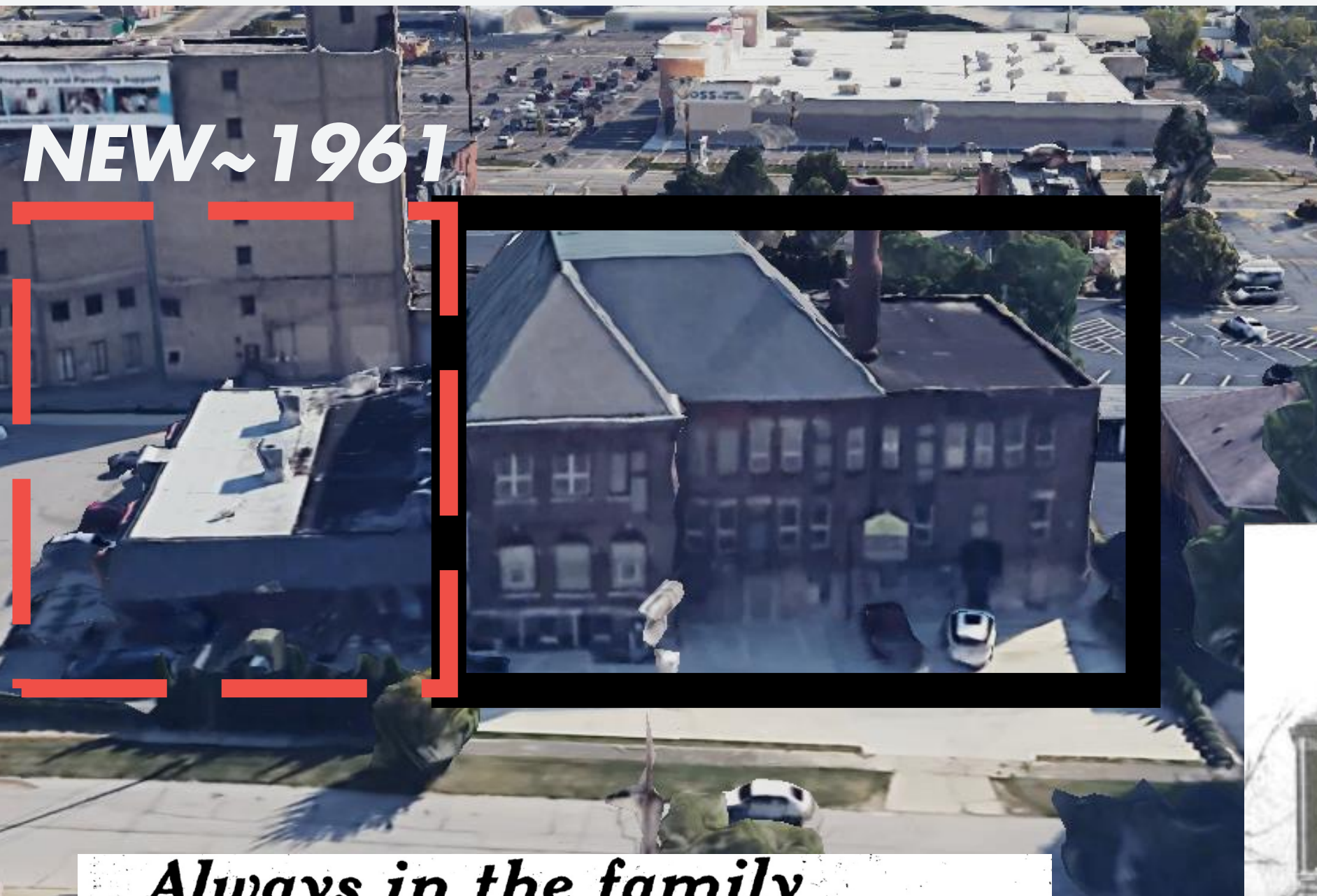
1957 BZA Case

Down West 152<sup>nd</sup> St



Current





**NEW~1961**

# Leopold Brothers Furniture



From Rockport to West Park

## *Always in the family* 120-year-old furniture business spans 5 generations

**By John F. Huth**

The furniture business in Cleveland has undergone a complete transformation in 120 years. Living proof is the Leopold Bros. Furniture Co. now observing the anniversary of its founding in 1859 and its unique continuous operation by five generations of one family.

The company, at 15149 Lorain Ave. since 1946 and at 8147 Brecksville Rd., Brecksville, has survived through adapting to the times and through dedication of family members, according to Charles Lutz, whose wife is a great-granddaughter of founder Henry A. Leopold.

Lutz manages the Lorain Ave. store and Wilbert A. Leopold, Henry's great-grandson, the Brecksville store. Both are in their mid-50s.

Each has a son working in the Lorain store — the fifth generation — Mark W. Lutz and Todd Leopold, both 27, who attend to customers, receive shipments, arrange deliveries and work at all the duties a store imposes.

In pre-Civil War days furniture was a death-a-minute business here. The most popular orders usually were for caskets. Making household furniture was the rest of the time.

That's the way it was when Leopold set up shop on Lorain W. 25th St.

He came here from his native Germany in 1853, a trained cabinet maker, and hired other new immigrants in 1859. They worked in the

ment of the store. As Cleveland and business grew, Leopold's former parking."



1979 Plain Dealer



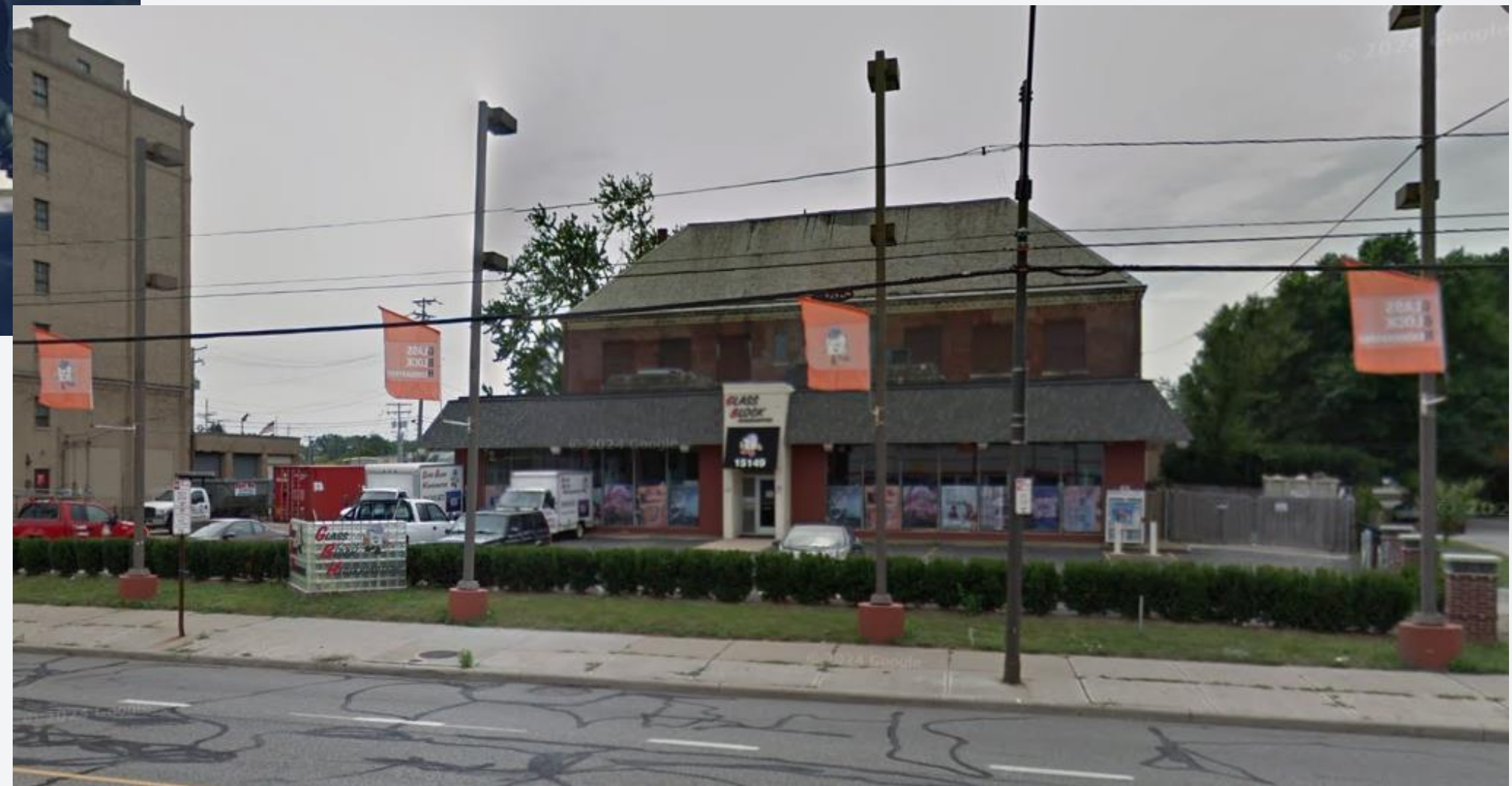
# Bill Lake Buick/ Ganley Dodge West



~2010



# Glass Block Headquarters

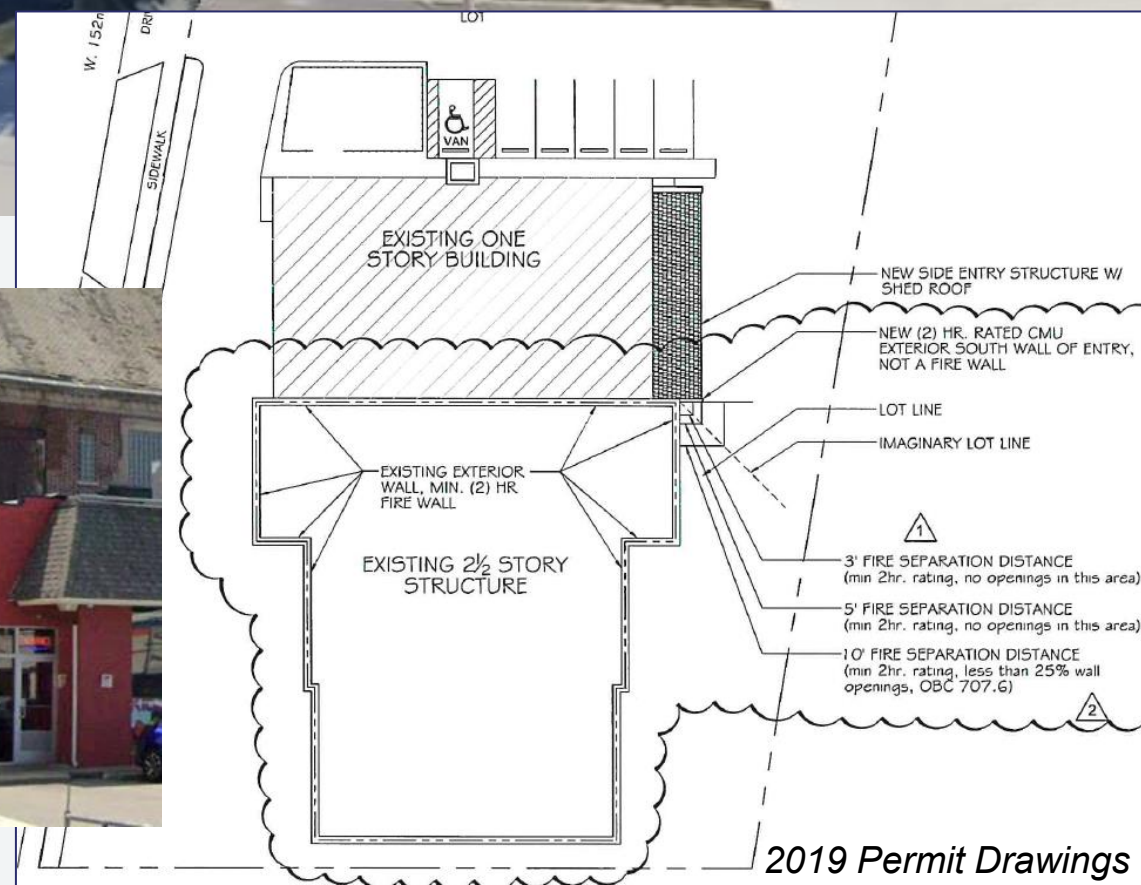


2017



# The Wash House and Café

(Old John Marshall Lofts)





## Cleveland Landmarks Commission Nomination Criteria:

- X The historic property exemplifies the cultural, economic, social or historic heritage of the City.
- X The historic property's location or its singular physical characteristics represent the establishment or are a familiar visual feature of a neighborhood, community or City.



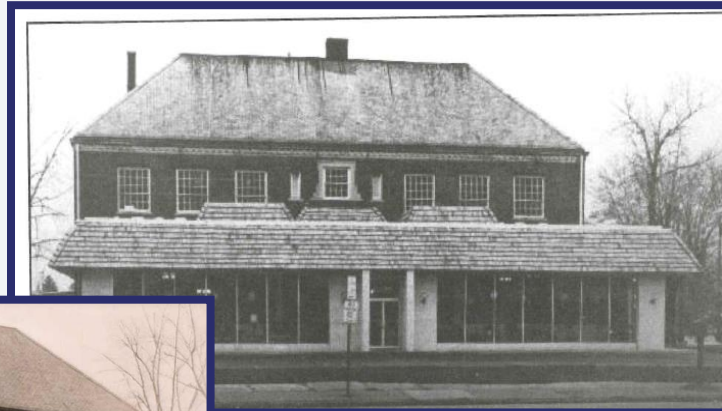
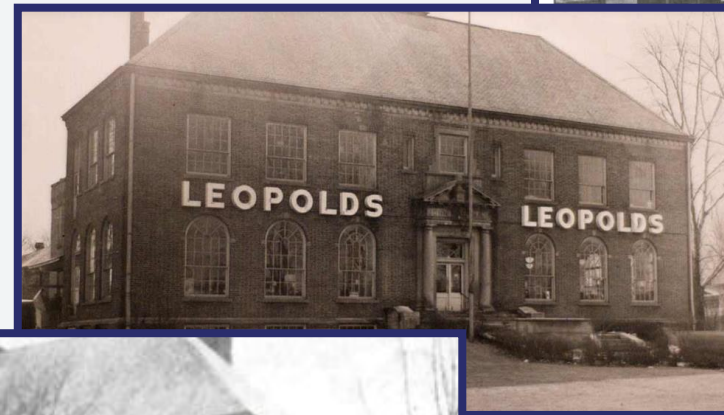
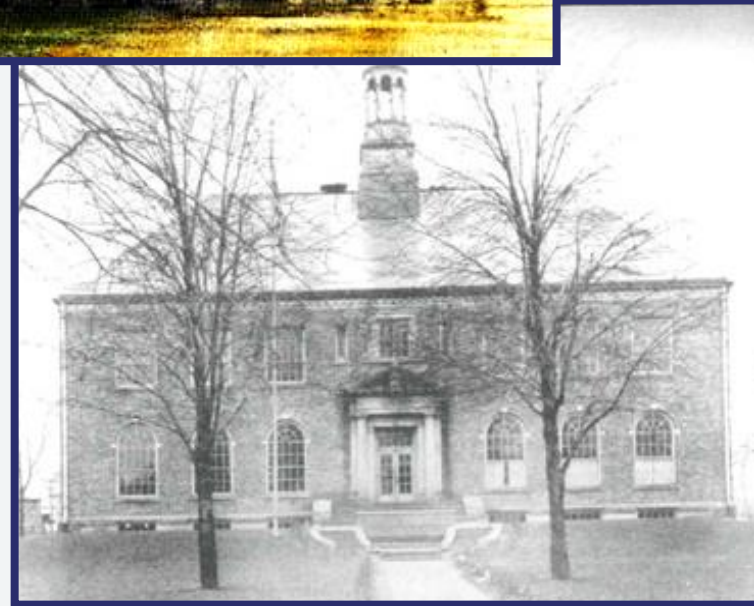
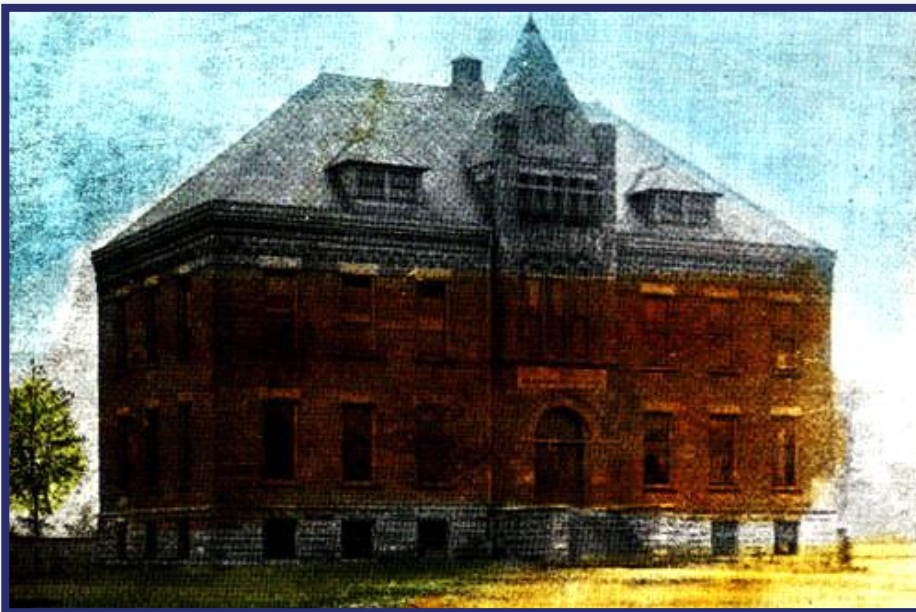
- Additional windows openings added to the west and east elevations on the 1899/1910 sections sometime after 1916
- Covered side porch on east elevation of 1899/1910 building, construction date not known
- New windows began to be installed after 2016



## Significance:

- One of the two last remaining West Park municipal buildings pre-annexation
- Growth and development of Rockport Township to Village/City of West Park to Cleveland's West Park neighborhood

# 1899



# 2025





## Sources

*A History of Cuyahoga County and the City of Cleveland* – William Coates

Cleveland Architects Database

Cleveland Historical

Cleveland Memory Project

Cleveland Municipal School District

Cleveland Public Library

Cuyahoga County Fiscal Office

Cuyahoga County Ohio GenWeb

Encyclopedia of Cleveland History

*From Rockport to West Park* - Ralph A. Pfingsten

*Furniture World Magazine*

HaithiTrust

Leopold's Furniture

Plain Dealer Historic

Sanborn Fire Insurance Maps

*The History of John Marshall High School, Cleveland Ohio* – Ralph A. Pfingsten

*True Tales of West Park* – Gary Swilik

West Park Historical Society

*West Park Then and Now* – Ralph A. Pfingsten and Gary Swilik