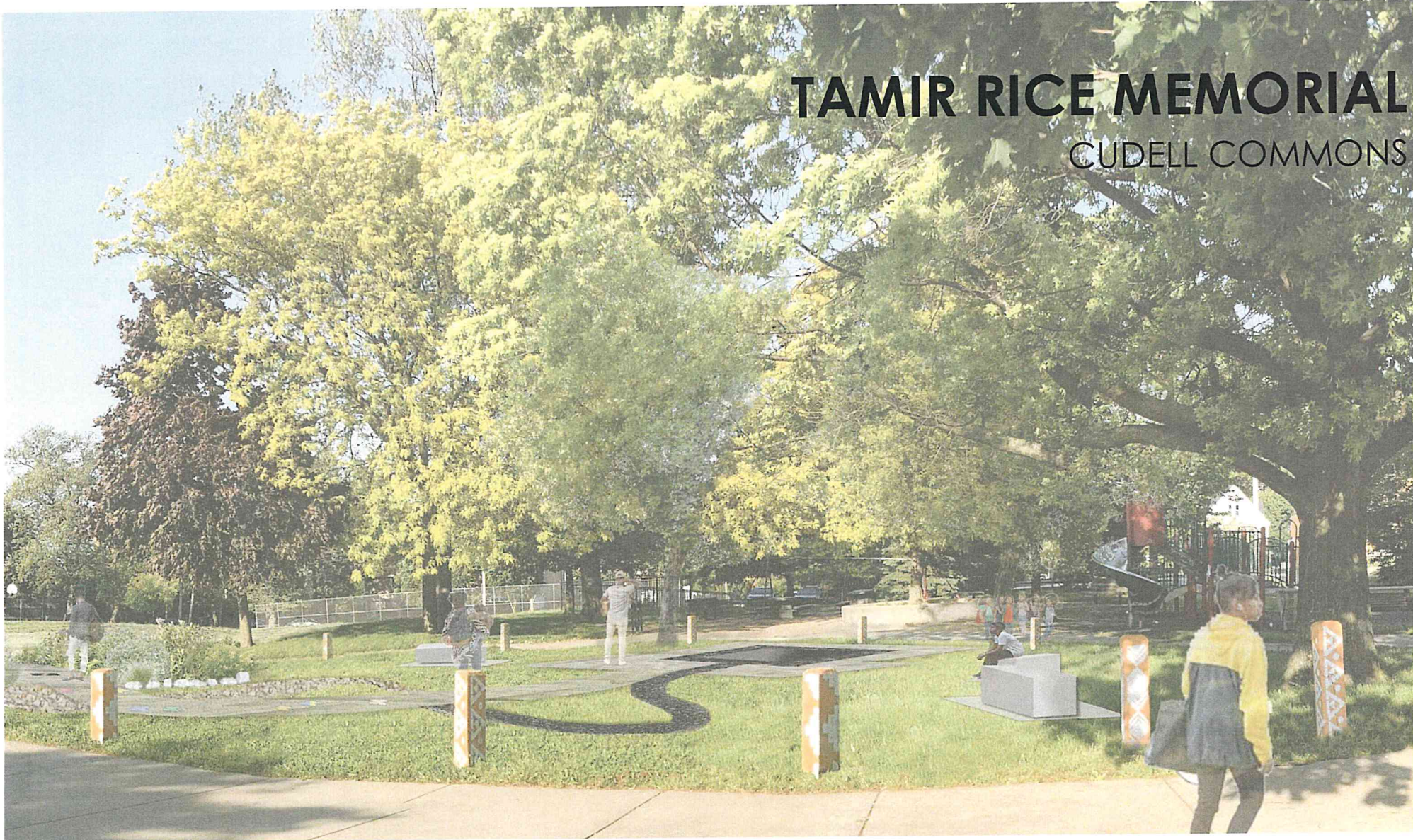
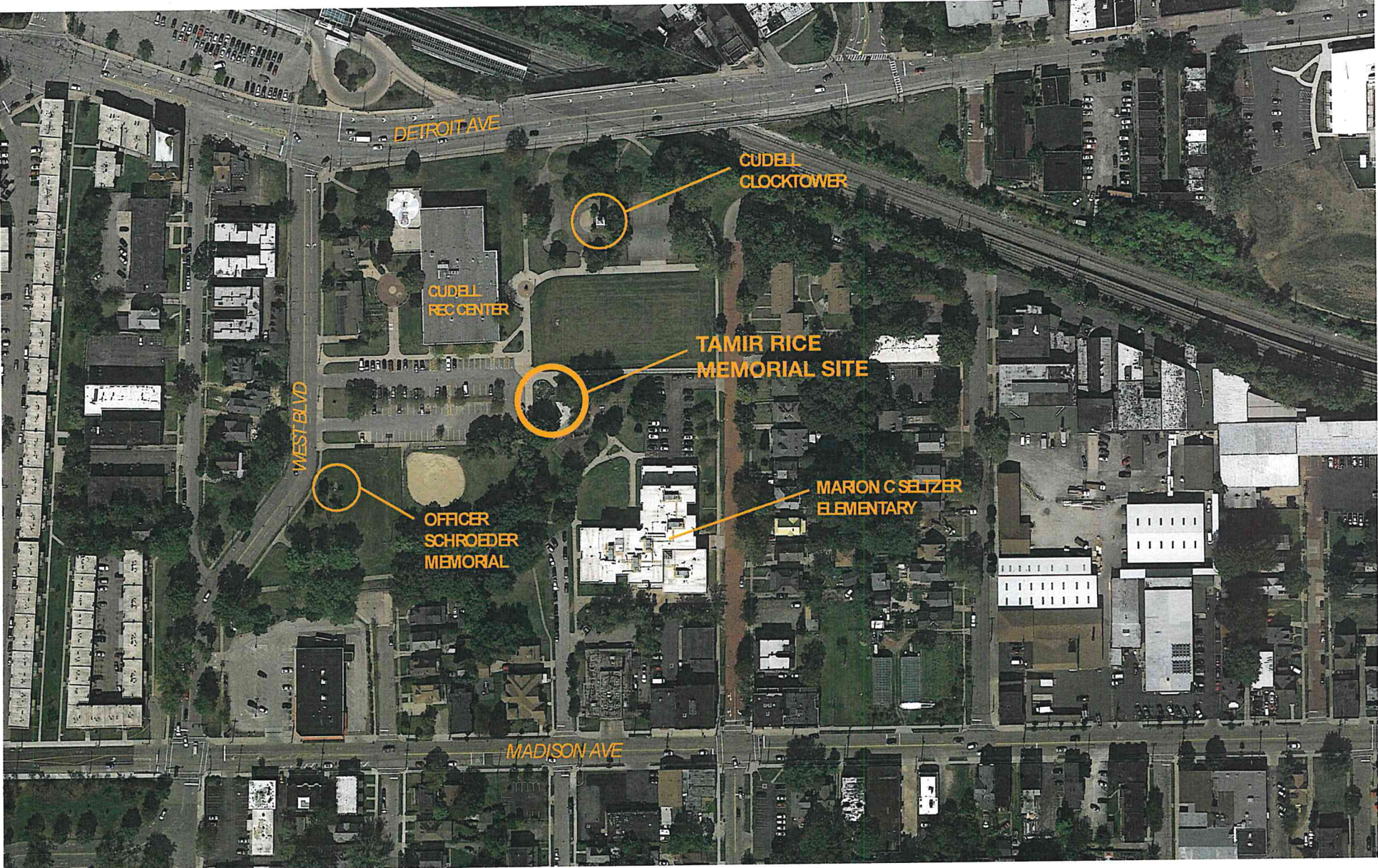


TAMIR RICE MEMORIAL

CUDELL COMMONS





DETROIT AVE

CUDELL
CLOCKTOWER

CUDELL
REC CENTER

TAMIR RICE
MEMORIAL SITE

WEST BLVD

OFFICER
SCHROEDER
MEMORIAL

MARION C SELTZER
ELEMENTARY

MADISON AVE



BUTTERFLY GARDEN

EXISTING PLAYGROUND

AREA OF SITE: 4,200 SF

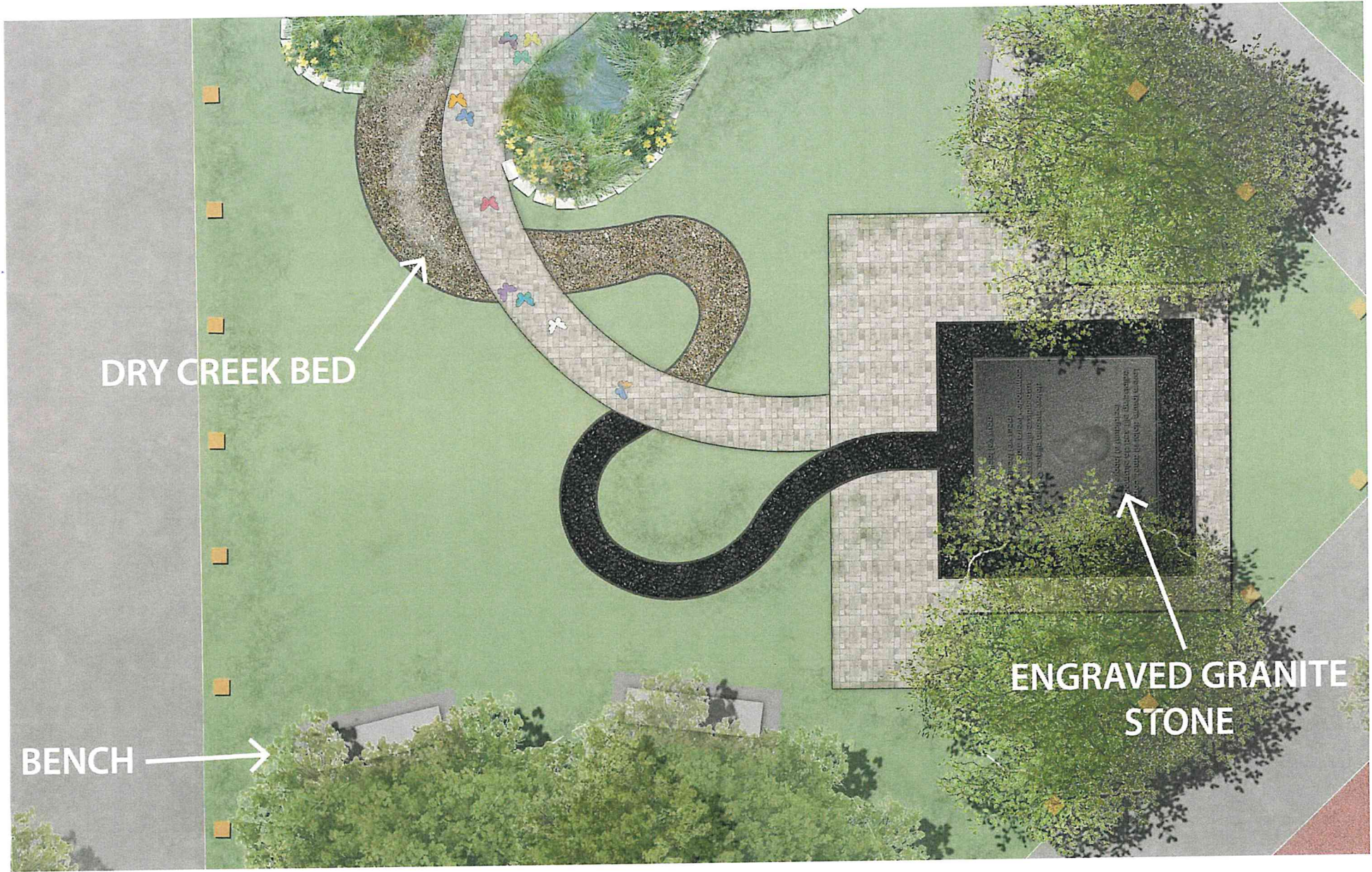
EXISTING SITE CONDITIONS



The Tamir Rice Memorial makes sacred a space of devastating injustice in the remembrance of a vibrant young Black child full of possibilities. It uses the forms of the butterfly and the box to signify what Tamir was, the flight of freedom, and what society assigned for him, the darkness of confinement.



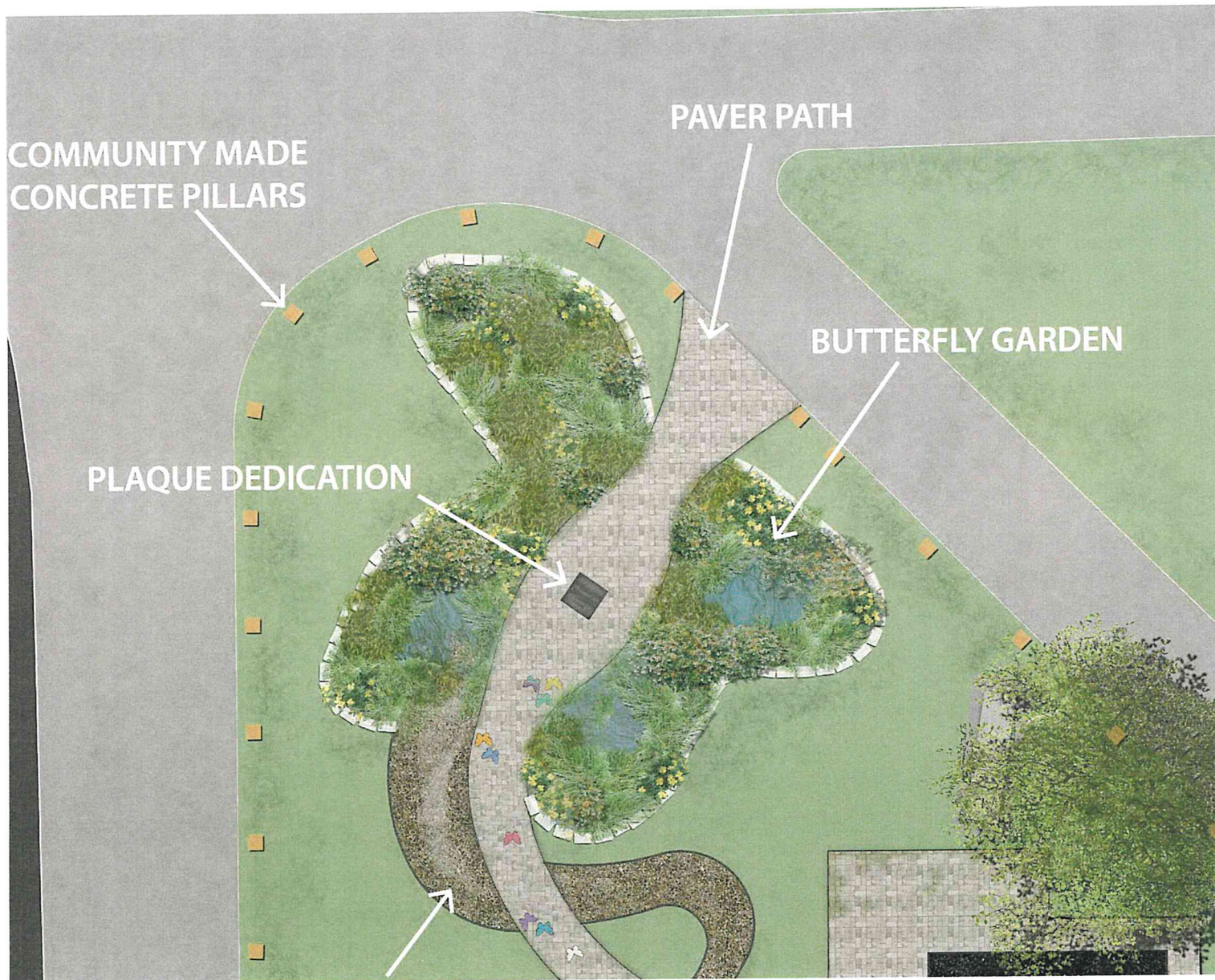
The design incorporates the existing butterfly garden that is dedicated to Tamir's sister, Tajai, and connects it to the engraved stone memorializing Tamir. The connection is made through a walking path, and also a dry creek that will carry rainwater into the butterfly garden.



DRY CREEK BED

ENGRAVED GRANITE
STONE

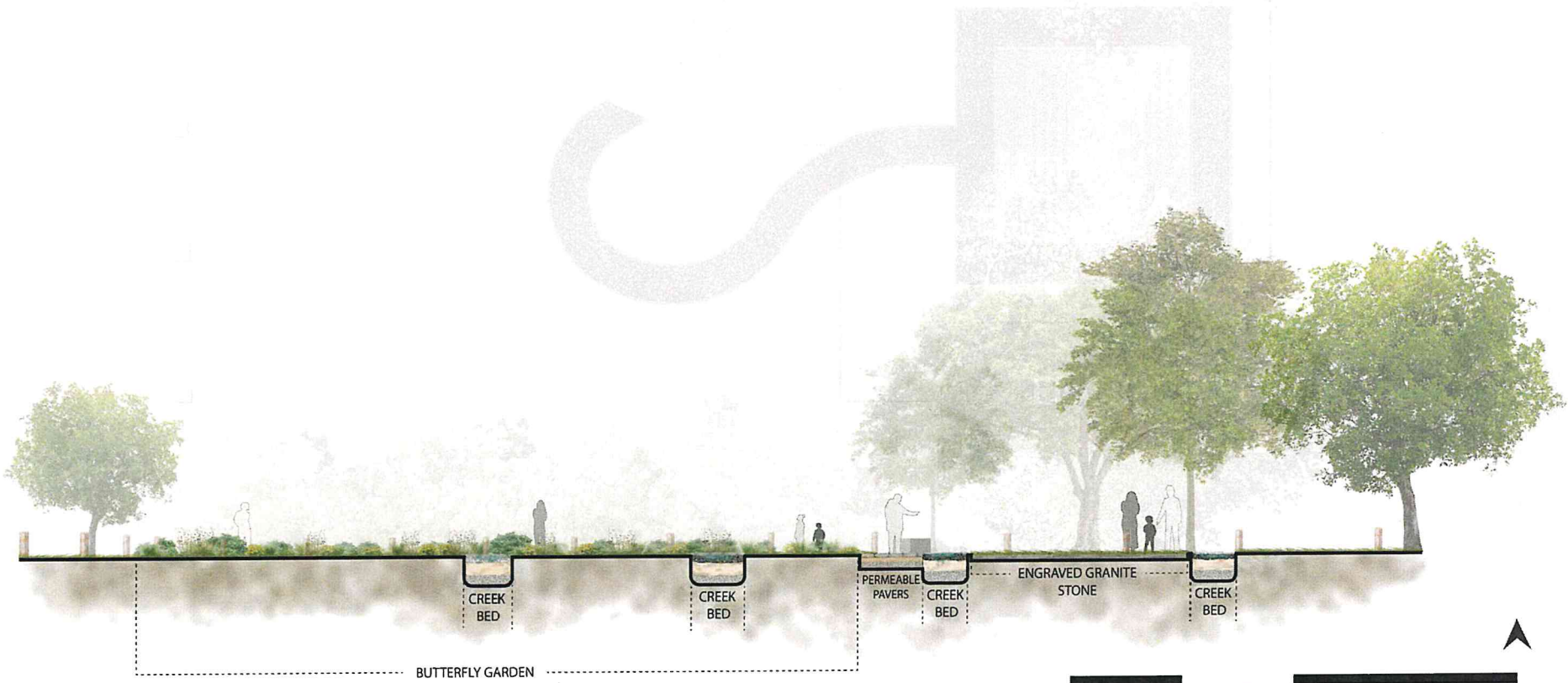
BENCH



The existing garden will undergo the following improvements:

- a refined, accessible pathway
- additional plants to create winter interest
- new stone edging

The existing bollards, painted by the community, will be touched up and sealed for preservation, and redistributed evenly around the site.



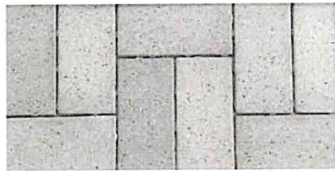
CONCEPT 1
SECTION B

TAMIR RICE MEMORIAL MATERIALS & FURNISHINGS

PAVERS



PAVER EXAMPLE



IVORY BAY
PERMEABLE PAVER
BELDEN

BENCHES



SOCRATES BENCH
LANDSCAPE FORMS
4 OPTIONS IN CAST STONE



DRY CREEK



DRY CREEK EXAMPLE



RIVER ROCK



BLACK RIVER
ROCK

TREES



WHITE FLOWERING REDBUD

