



City Council Update | August 2020



Lead Safe Certification Implementation

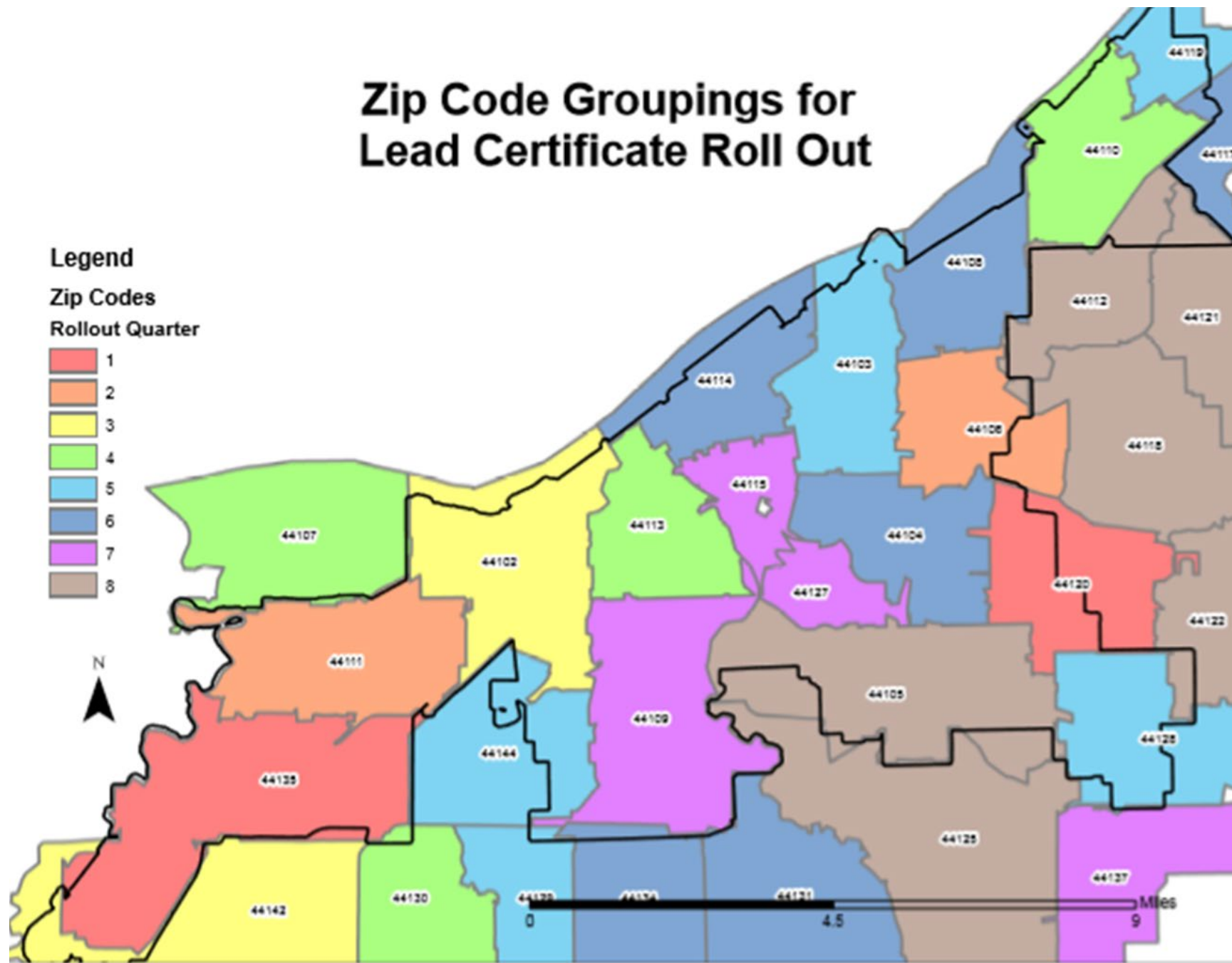
- Onboarding **Lead Safe Auditor**
- Hiring staff
- Boards and Commission
- Monitoring impact of Covid-19 on property owners
- **Zip Code Groupings** for Lead Safe Certification Roll Out

Zip Code Groupings for Lead Certificate Roll Out

Legend

Zip Codes

Rollout Quarter






City \$5 million Investment

- **City allocated \$5M to the Lead Safe Home Fund as part of 2019 Transfer Ordinance**
- **Proposal:**
 - Award funds to CHN Housing Capital
 - Directly support loans, grants, and incentives to property owners
 - Outlines minimum eligibility criteria
 - No more than 10% to be spent on administration
 - City will receive bi-annual reports



Your child. Your niece. Your neighbor. Your barber.
The invisible causes and harmful effects of lead poisoning
have a sweeping impact on our community.
We can prevent children from being lead poisoned.
It's up to us to protect future generations.

**Know the sources. Prevent exposure.
Let's build a lead safe Cleveland.**



Lead Safe Cleveland Coalition **2020 ACTION PLAN**



SUPPORT THE CITY OF
CLEVELAND TO BUILD &
MEASURE THE ROLL OUT
OF LEAD SAFE
CERTIFICATION SYSTEM



LAUNCH PUBLIC
AWARENESS
CAMPAIGN



ADVOCATE FOR
STATE & FEDERAL
LEAD SAFE POLICIES
& RESOURCES



SECURE
INVESTMENTS IN THE
LEAD SAFE HOME
FUND



LAUNCH THE LEAD
SAFE RESOURCE
CENTER & HOME
LOANS AND GRANTS

Steering Committee

Committees Chairs + Individuals directly impacted by lead + Civic leaders + At-large members + City of Cleveland representatives

Lead Safe Cleveland Coalition



LEAD SAFE HOME FUND

Governance
Chair: Mt. Sinai Health Care Foundation

Community Engagement
Chair: Environmental Health Watch

Research & Evaluation
Chair: Case Western Reserve University

Policy
Chair: Enterprise Community Partners

Summit
Chair: United Way

Resource Development
Chair: Gund Foundation

Workforce Development Advisory Group
Chair: Urban League

Lead Safe Resource Center
Administrator: Environmental Health Watch

Lead Safe Home Loans & Grants
Administrator: CHN Housing Partners

Resident Action Teams

Educational Interventions
Chair: Legal Aid Society & Cleveland Metropolitan School District

HHAC + Early Childhood Screening, Testing & Services
Chair: Invest In Children & County Board of Health

Child Care Settings
Chair: Starting Point



Downstream Consequences of Childhood Lead Poisoning

- Effects of lead poisoning are **long term and cumulative**
- Cleveland children with EBLs:
 - 27% lower chance of being on-track for kindergarten
 - 25-30% more likely to enter the juvenile justice system and 34% more likely to be incarcerated as adults
 - By age 23, more likely to have relied on public assistance programs



JACK, JOSEPH AND MORTON MANDEL
SCHOOL OF APPLIED SOCIAL SCIENCES

CASE WESTERN RESERVE
UNIVERSITY



Lead Safe Home Fund

- **First-of-its-kind public-private partnership** to support qualifying property owners and families to comply with Lead Safe Certification. It encompasses 2 interrelated functions:
 - 1) **Lead Safe Resource Center**
 - 2) **Lead Safe Home Loans and Grants**
- National RFQ and review process to select **EHW** and **CHN**



Lead Safe Home Fund

- Raised nearly **\$20 million in 9 months**
 - The George Gund Foundation: \$2 million
 - Mt. Sinai Health Care Foundation: \$1 million
 - St. Luke's Foundation: \$100,000
 - State of Ohio: \$2 million
 - Huntington Bank: \$40,000
 - Mandel Foundation: \$5 million
 - United Way of Greater Cleveland: \$250,000
 - City of Cleveland: \$5 million
- **Prospects**



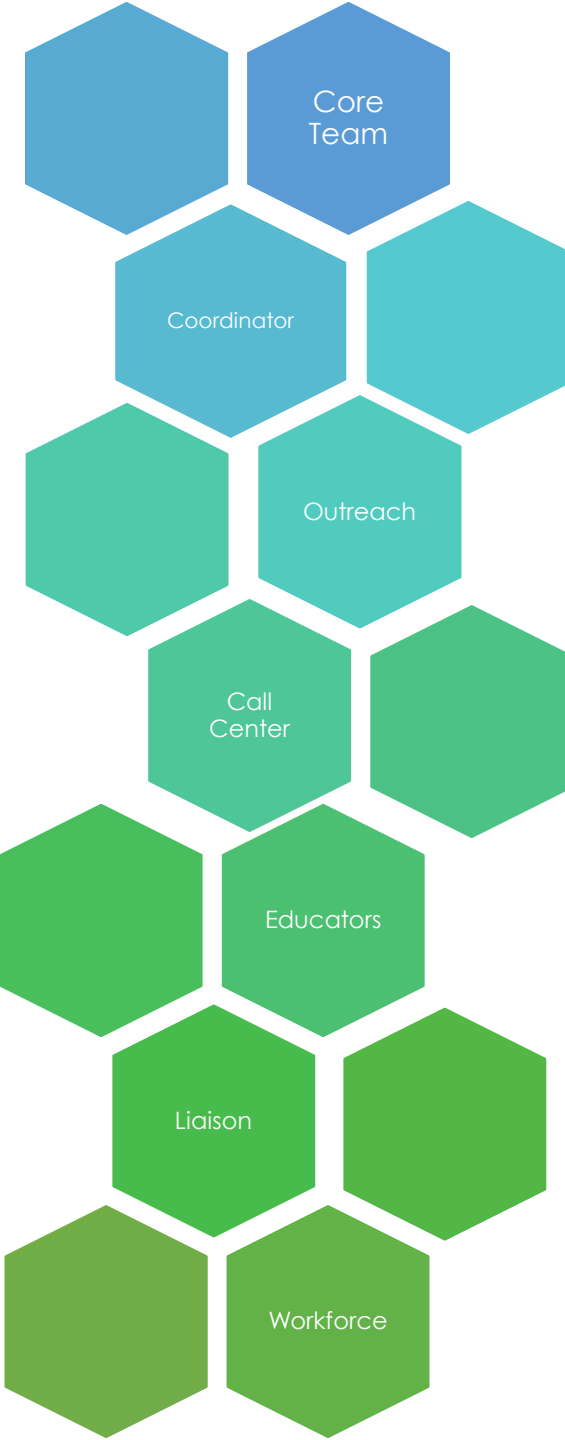
Lead Safe Resource Center

- **New location + workshop**
- **Hired team**
 - **Program Manager** | Chantal Tademy
 - **Tenant/Landlord Liaison** | Tracie Washington
 - **Lead Safe Hotline** | Robin Brown + CCOAL
 - **Community Organizing Team** | Fred Ward + 3 coordinators, 6 organizers



Lead Safe Resource Center

- **Our community's one-stop-shop for lead poisoning prevention**
- We will provide:
 - Lead Safe Certification navigation
 - Community outreach and organizing
 - Resident and landlord education
 - Workforce training



Activate

• Purpose is to activate community member engagement in the process for achieving lead safety activities in Cleveland.

Navigate

• Purpose is to navigate community members to the appropriate resources and teams to achieve lead safety in Cleveland.

Integrate

• Purpose is to integrate community members in the process of landlord and tenant interactions with policy and dollars associated with lead safety in Cleveland.

Generate

• Purpose is to generate ideas and information for the LSRC teams.

Disseminate

• Purpose is to disseminate information to community members for the knowledge on lead safety activities in Cleveland.

Educate

• Purpose is to educate community members on the affects of lead and its importance for lead safety in Cleveland.

Remediate

• Purpose is to remediate lead exposed community member homes in Cleveland in compliance with lead safe policy in Cleveland.

LEAD POISONING CAN AFFECT ANYBODY”

- Mandel Duncan
Landlord

Lead poisoning can cause lifelong, often irreversible problems that affect education, behavior, and health. No amount of lead exposure is considered safe.

KNOW THE SOURCES. PREVENT EXPOSURE.
LET'S BUILD A LEADSAFE CLEVELAND.



833-601-LEAD (5323)

www.lead safecle.org

COMMON SOURCES OF LEAD EXPOSURE ARE PEELING PAINT, PAINT CHIPS OR PAINT DUST”

- Dr. Aparna Bole
Pediatrician, Riverside Children's Hospital

The invisible causes and harmful effects of lead poisoning have a sweeping impact on our community. No amount of lead exposure is safe.

KNOW THE SOURCES. PREVENT EXPOSURE.
LET'S BUILD A LEADSAFE CLEVELAND.



833-601-LEAD (5323)

www.lead safecle.org

AS LONG AS MY NEIGHBOR'S AFFECTED, I'M AFFECTED”

- Gwen Garth
Community Voice

Lead poisoning can cause lifelong, often irreversible problems that affect education, behavior, and health. No amount of lead exposure is considered safe.

KNOW THE SOURCES. PREVENT EXPOSURE.
LET'S BUILD A LEADSAFE CLEVELAND.



833-601-LEAD (5323)

www.lead safecle.org

EVERYONE DESERVES TO LIVE IN A HEALTHY HOME”

- Sonia Manroy Matis
Community Voice

Lead poisoning can cause lifelong, often irreversible problems that affect education, behavior, and health. No amount of lead exposure is considered safe.

KNOW THE SOURCES. PREVENT EXPOSURE.
LET'S BUILD A LEADSAFE CLEVELAND.



833-601-LEAD (5323)

www.lead safecle.org

WE HAVE AN OBLIGATION TO ENSURE THAT OUR TENANTS ARE SAFE IN THE PLACES THAT THEY'RE RENTING FROM US”

- Scott Kneable
Landlord

Lead exposure, even at low levels, is toxic. Together, we can prevent children from being lead poisoned.

KNOW THE SOURCES. PREVENT EXPOSURE.
LET'S BUILD A LEADSAFE CLEVELAND.



833-601-LEAD (5323)

www.lead safecle.org

833-601-LEAD (5323)

Contact Us

Comuníquese

Lead Safe Resource Center

Lead Safe Certification

Events & Training



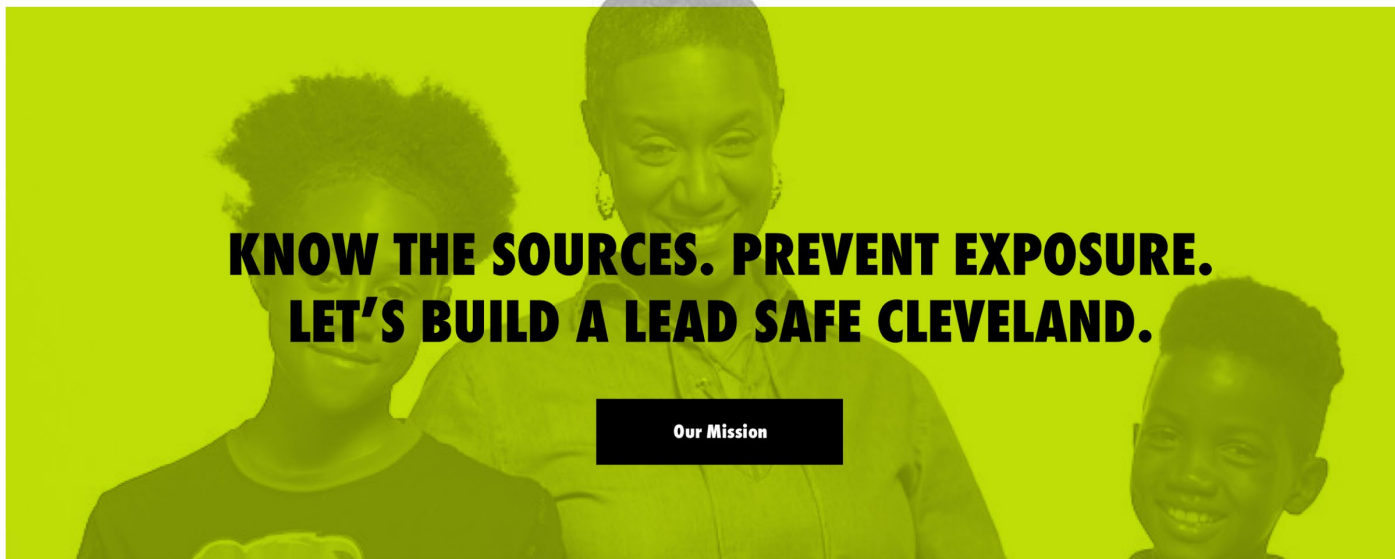
About Lead

Residents & Families

Landlords & Property Owners

Lead Safe Workers

About The Coalition



**KNOW THE SOURCES. PREVENT EXPOSURE.
LET'S BUILD A LEAD SAFE CLEVELAND.**

[Our Mission](#)



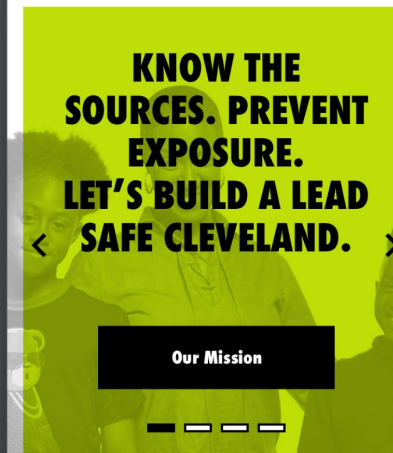
LEARN HOW TO PROTECT FAMILIES AND CREATE

9:41

www.leadSAFE.org

Contact Us

Comuníquese



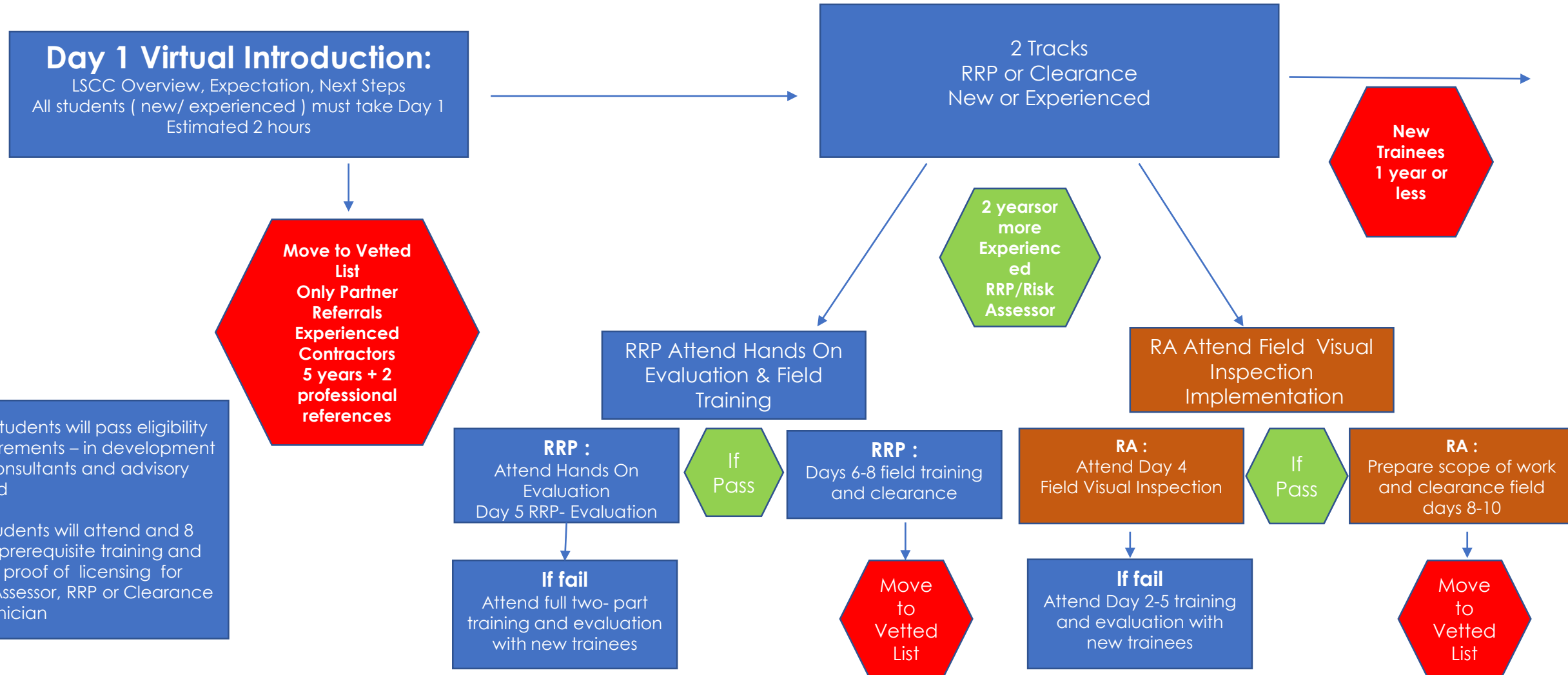
**KNOW THE SOURCES. PREVENT EXPOSURE.
LET'S BUILD A LEAD SAFE CLEVELAND.**

[Our Mission](#)

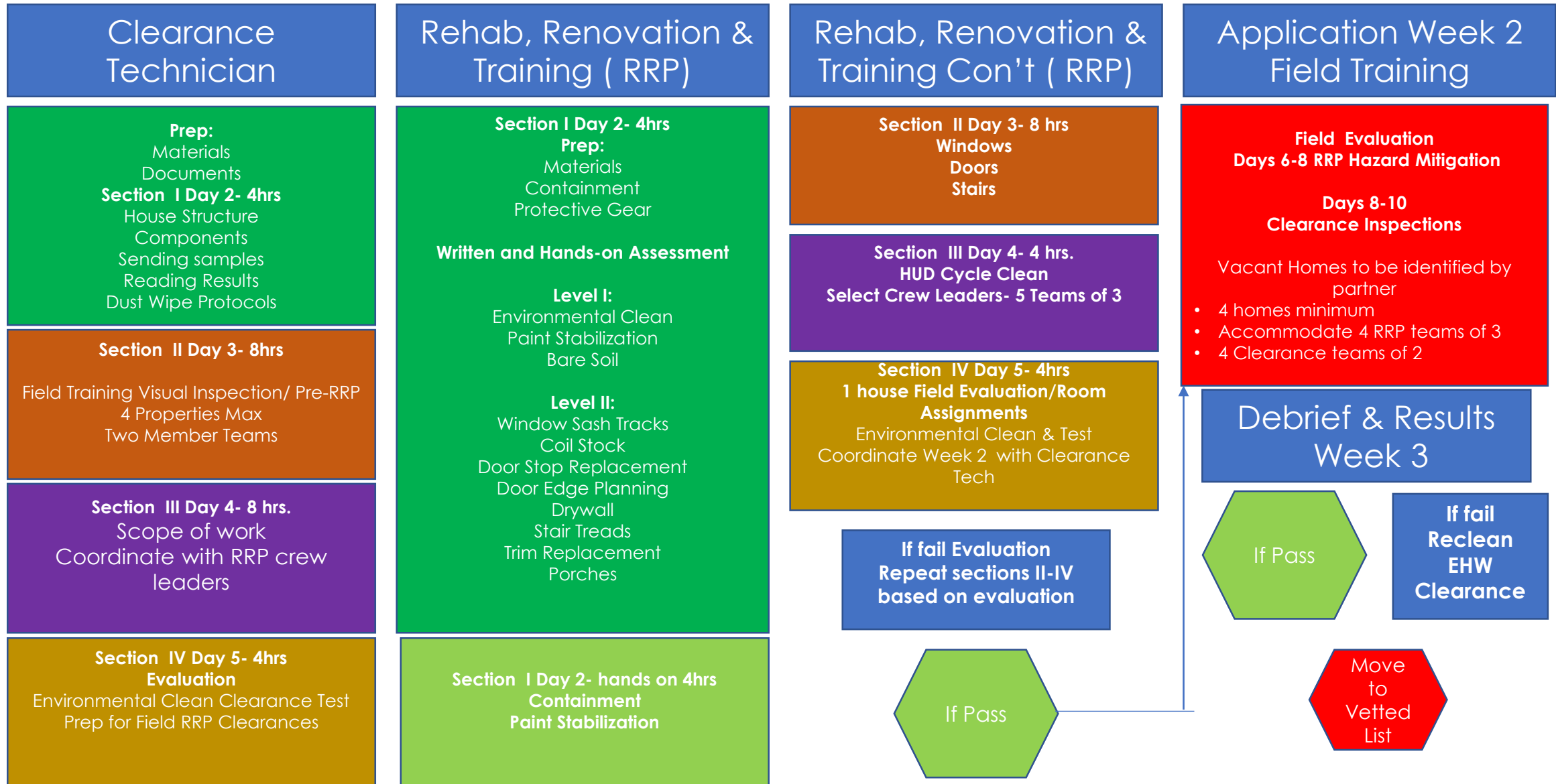


LEARN HOW TO PROTECT FAMILIES AND CREATE LEAD SAFE HOMES

Workforce Development Two-Part Training RRP/Lead Clearance Technician



Workforce Development Two-Part Training RRP/Lead Clearance Technician

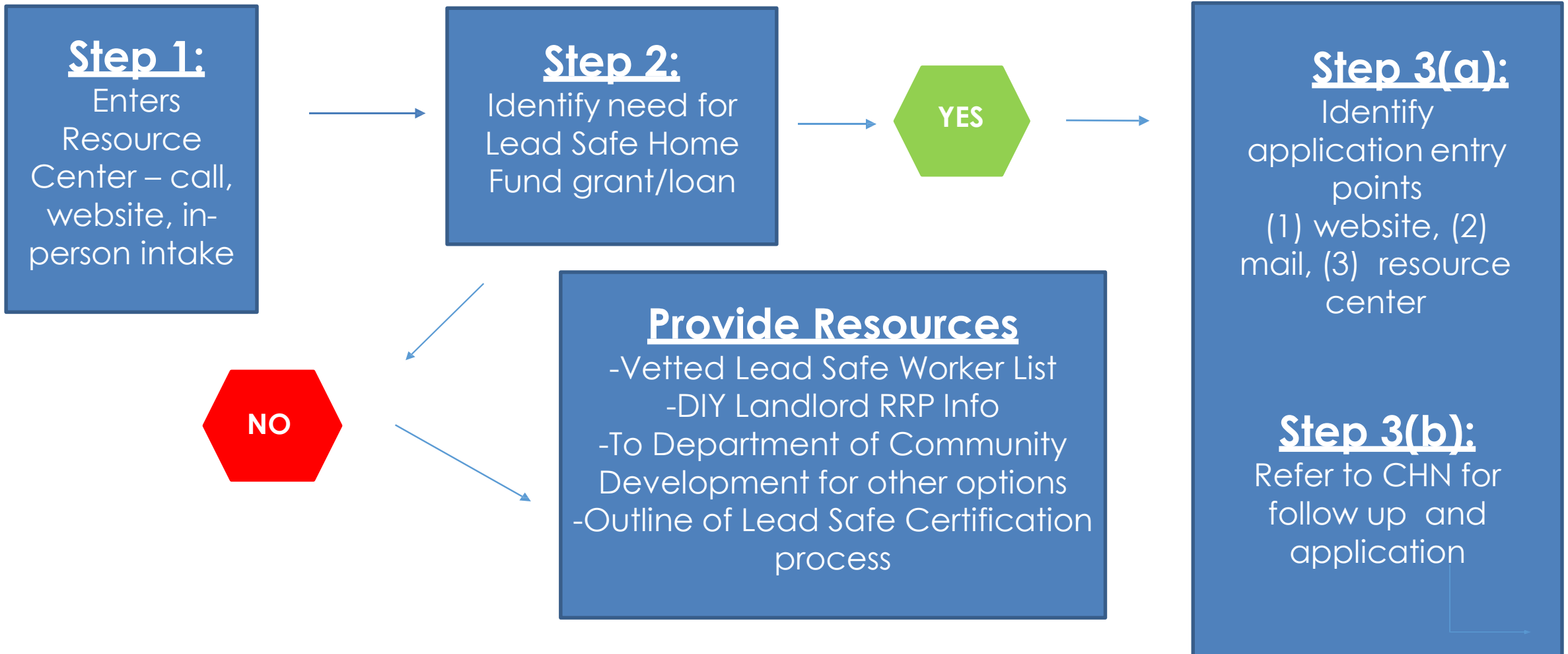




Lead Safe Home Loans and Grants

- We will provide: **a spectrum of home loans, grants, and incentives to help property owners achieve Lead Safe Certification**
- **Hiring Team**
 - **Lead Services Director** | Matt Sattler
- **Finalizing loan, grant, incentive products**
 - Construction management process
 - Landlord engagement
 - Expectations and assumptions
 - Building the Loan Fund

Home Loans and Grants Workflow



Step 4: Application Submission

Step 4 (a): Loan Applications/Supporting Documents

Processing/
Underwriting

Loan Committee
Review

Approved,
transferred to interim
controls

Step 4 (b): Grant Application/ Supporting Documents

Intake/ Processing

Loan Committee
Review

Approved,
transferred to interim
controls

Rejected
Applicants

Provide Resources

Step 5: Visual Inspection/Measurement/Spec Writing

Complete visual inspection of unit

Unit Passed = Visually Cleared

Recommend Environmental Cleaning prior to Clearance Testing

Step 5 (b): Customer does not move forward

- Scope to large
- No hazards found
- Customers choice

Unit Failed: Need Interim Controls

- Develop scope of work/specs
- Request contractor remediation
- Resource Center provides lead education

Step 6: Contractor Selection Process

- Multiple contracts are executed between vendors and client (Interim, Cleaning, Clearance)
- Notice to proceed issued / interim control work begins
- Contractor submits completion certificate / invoice & waiver of lien

Step 7: Visual Inspection of Completed Work



Contractor work verified/ invoice approved for payment



Inspection Failed: Punch list developed for incomplete work

1. Second inspection required to clear punch list
2. Invoice approved for payment

Step 8: Environmental Cleaning Work

- Notice to proceed issued
- Vendor must coordinate with Clearance Tech upon completion of work



Step 9: Clearance Tech Testing / Lab Sample

- Testing samples are secured and sent to lab for analysis

Unit Failed – Notice to re-clean and retest will be required

Unit Passed: Clearance Achieved

Step 10: Clearance Achieved

- Provide notice and documentation to property owner
- Provide documentation to Department of Building and Housing Lead Safe Certification

Step 11: Payment Points

1. Risk Assessor = Upon visual inspection & scope development
2. Interim Control Contractor = Upon completion and visual clearance
3. Risk Assessor = Upon clearing interim control work
4. Environmental Cleaners = Upon achieving Lab Sample Clearance
5. Clearance Technicians = Upon delivery of Clearance test results



Landlord Incentives

- Coalition believes the *“Lead Safe Certification should be enforced in all parts of the city, but the resources should be targeted based on high-risk areas”*
- **Two-prong approach for accessibility + equity:**
 - A first-come, first-serve pool of incentives available evenly across every Roll Out grouping
 - A targeted pool of incentives for landlords in “hotspot” ZIP codes and Roll Out groupings

LEAD  **SAFE**
CLEVELAND COALITION

Thank you | Questions?