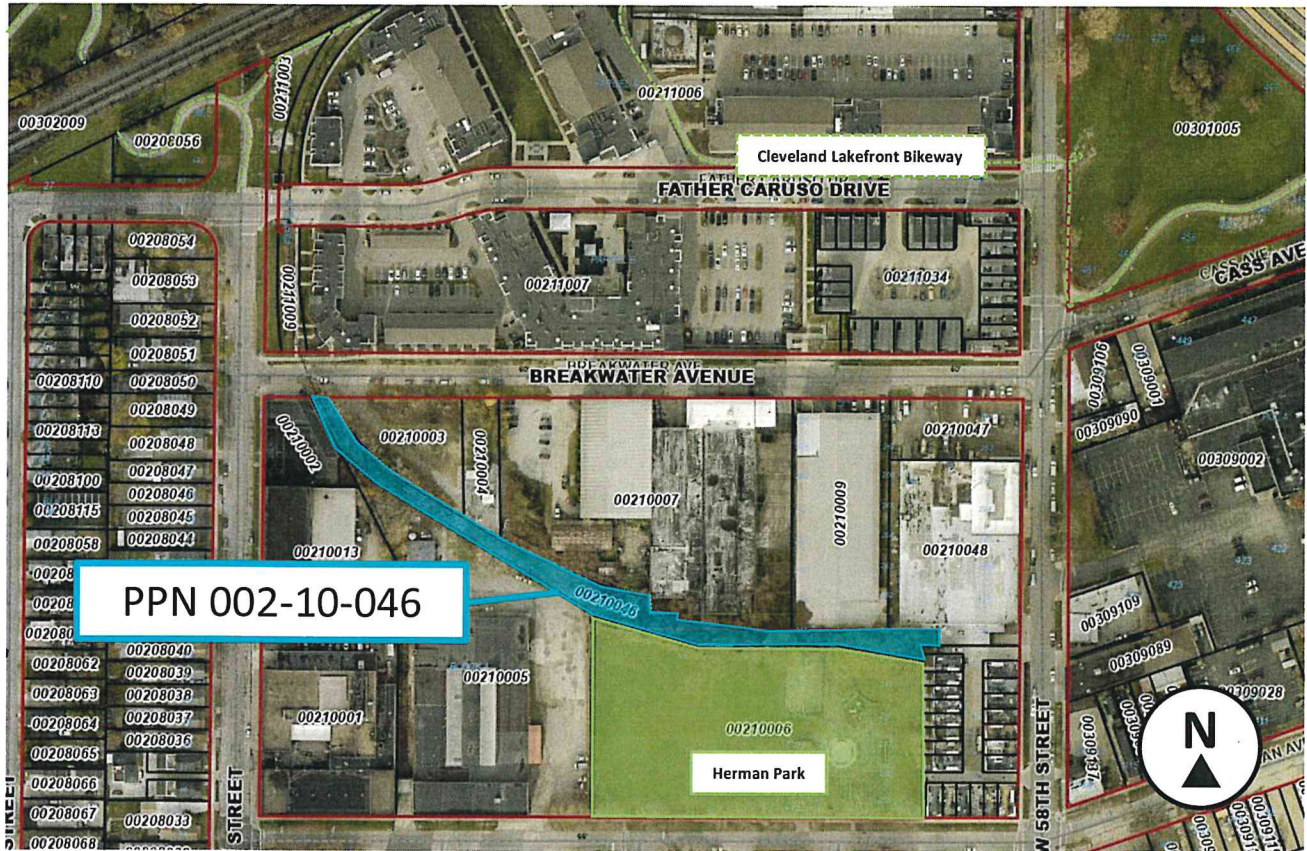


LEGISLATIVE SUMMARY
Mayor's Office of Capital Projects
Division of Real Estate

Accept Property Donation for Herman Park Trail Connector

Ordinance No:	251-2023
Legislative Purpose:	Authorizing the Director of the Mayor's Office of Capital Projects to enter into an agreement with the NRP group to accept the donation of property.
Project Summary:	<p>In December 2022, the NRP Group offered to donate at no cost PPN 002-10-046 to the City of Cleveland for the purpose of planning, designing and constructing a trail to connect the Cleveland Lakefront Bikeway to Herman Park. The proposed Herman Park Connector Trail will serve as an amenity for existing and future residents of the Detroit Shoreway neighborhood, the City and the region.</p> <p>The development of the trail aligns with the Connecting Cleveland 2020 Citywide Plan which acknowledges the importance of connections between neighborhoods and opportunities.</p>
PPN:	002-10-046
Ward:	Ward 15 (Councilperson Spencer)
Attachments:	Location Map

Location Map of Donated Land (PPN 002-10-046) for the Proposed Herman Park Trail Connector





City of Cleveland **Memorandum**
Justin M. Bibb, Mayor

Date: February 2, 2023

To: Mark D. Griffin, Director
Department of Law

From: James DeRosa, Director
Mayor's Office of Capital Projects

Subject: Accept Property Donation for Herman Park Trail Connector

Please prepare legislation authorizing the Director of the Mayor's Office of Capital Projects to enter into an agreement with the NRP Group to accept donation of land for the construction of a trail connector between the Cleveland Lakefront Bikeway and Herman Park.

Thank you.

JD/ap

Encl.

cc: Bradford J. Davy, Chief of Staff
Ryan Puente, Deputy Chief of Staff & Chief Government Affairs Officer
Bonita G. Teeuwen, Chief Operating Officer
Susanne DeGennaro, Commissioner, Division of Real Estate, MOCAP
Meredith Carey, Legislative Liaison, MOCAP
Nancy Lanzola, Legislative Liaison, Department of Law
Beverly Gray, Legislative Liaison, Department of Law