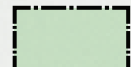



EAST 55th STREET MARINA

-  East 55th Street/Gordon Park Land
-  Land Removed by Lease Modification

East 55th Street Before Lease Modification: ±52 acres
 East 55th Street After Lease Modification: ±49 acres



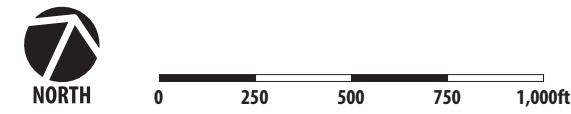
EDGEWATER PARK


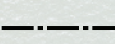
- Cleveland Metroparks Boundary
- Proposed New Lease Area
- Proposed Lease Boundary



Exhibit A-2.1
Edgewater Lease Boundary

May 2019



 Cleveland Metroparks Boundary
 Proposed Lease Boundary



Lake Erie

Cuyahoga River

1.7 Acres

Exhibit A-2.1
 Wendy Park Lease Boundary

May 2019



0 200 400 600 800 1,000 ft

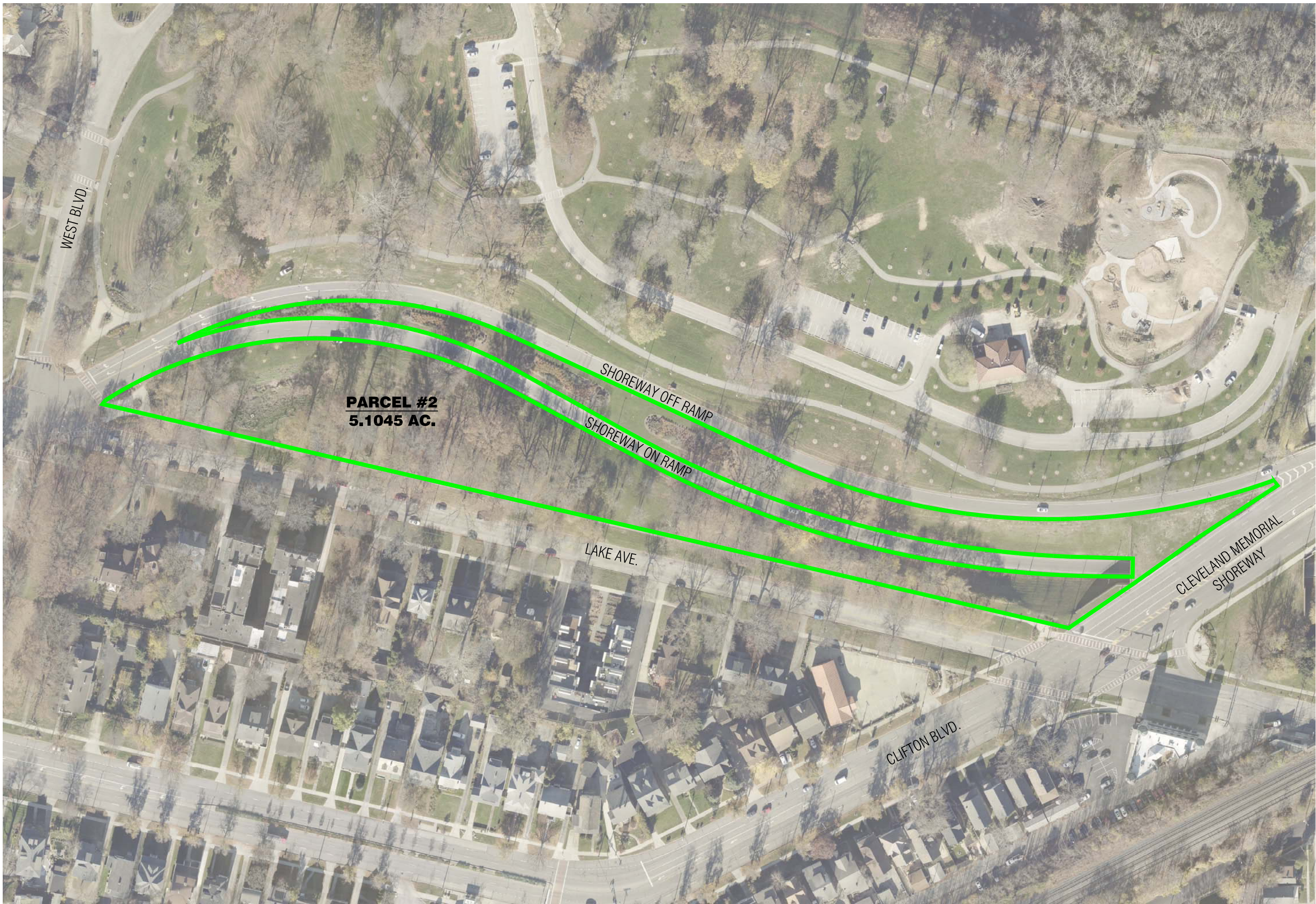




CALCULATED	APK
	CHECKED

EDGEWATER LEASE AMENDMENTS 2021
 PARCEL #1 - LAKEFRONT RESERVATION





PARCEL #2
5.1045 AC.

WEST BLVD

LAKE AVE.

CLIFTON BLVD.

SHOREWAY OFF RAMP
SHOREWAY ON RAMP

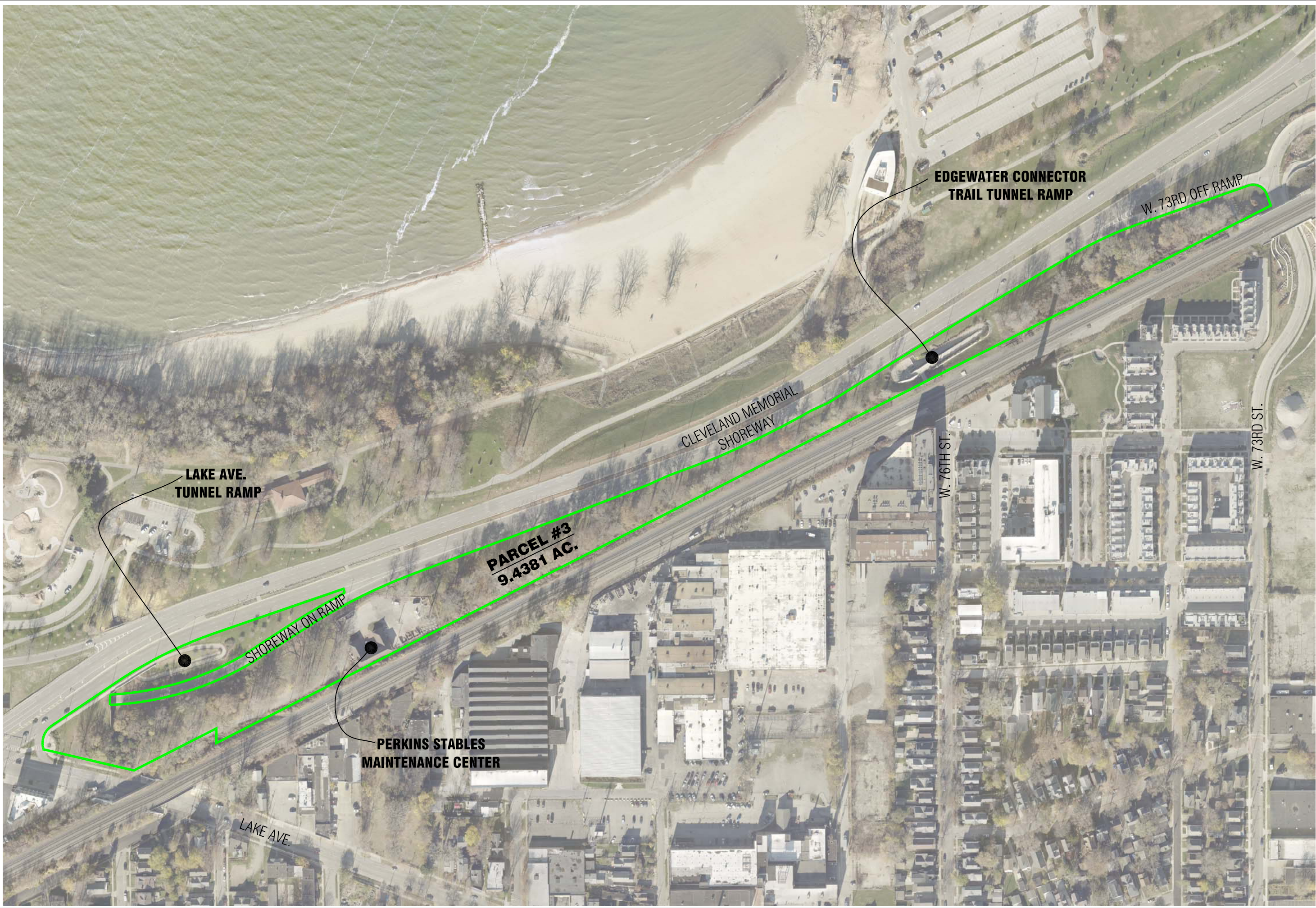
CLEVELAND MEMORIAL
SHOREWAY



CALCULATED
APK
CHECKED

EDGEWATER LEASE AMENDMENTS 2021
PARCEL #2 - LAKEFRONT RESERVATION

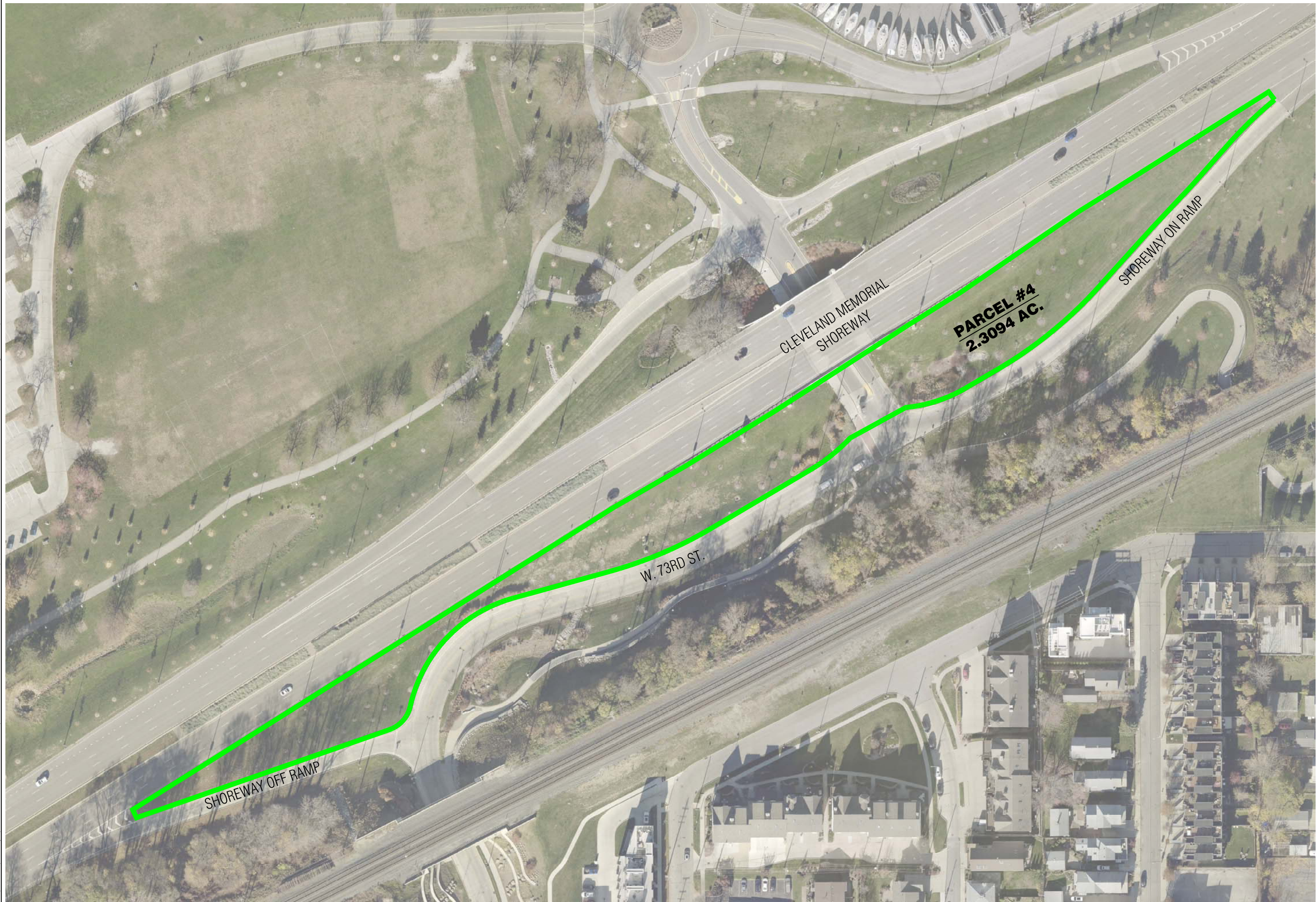




CALCULATED	APK
	CHECKED

EDGEWATER LEASE AMENDMENTS 2021
 PARCEL #3 - LAKEFRONT RESERVATION





SHOREWAY OFF RAMP

W. 73RD ST.

CLEVELAND MEMORIAL SHOREWAY

PARCEL #4
2.3094 AC.

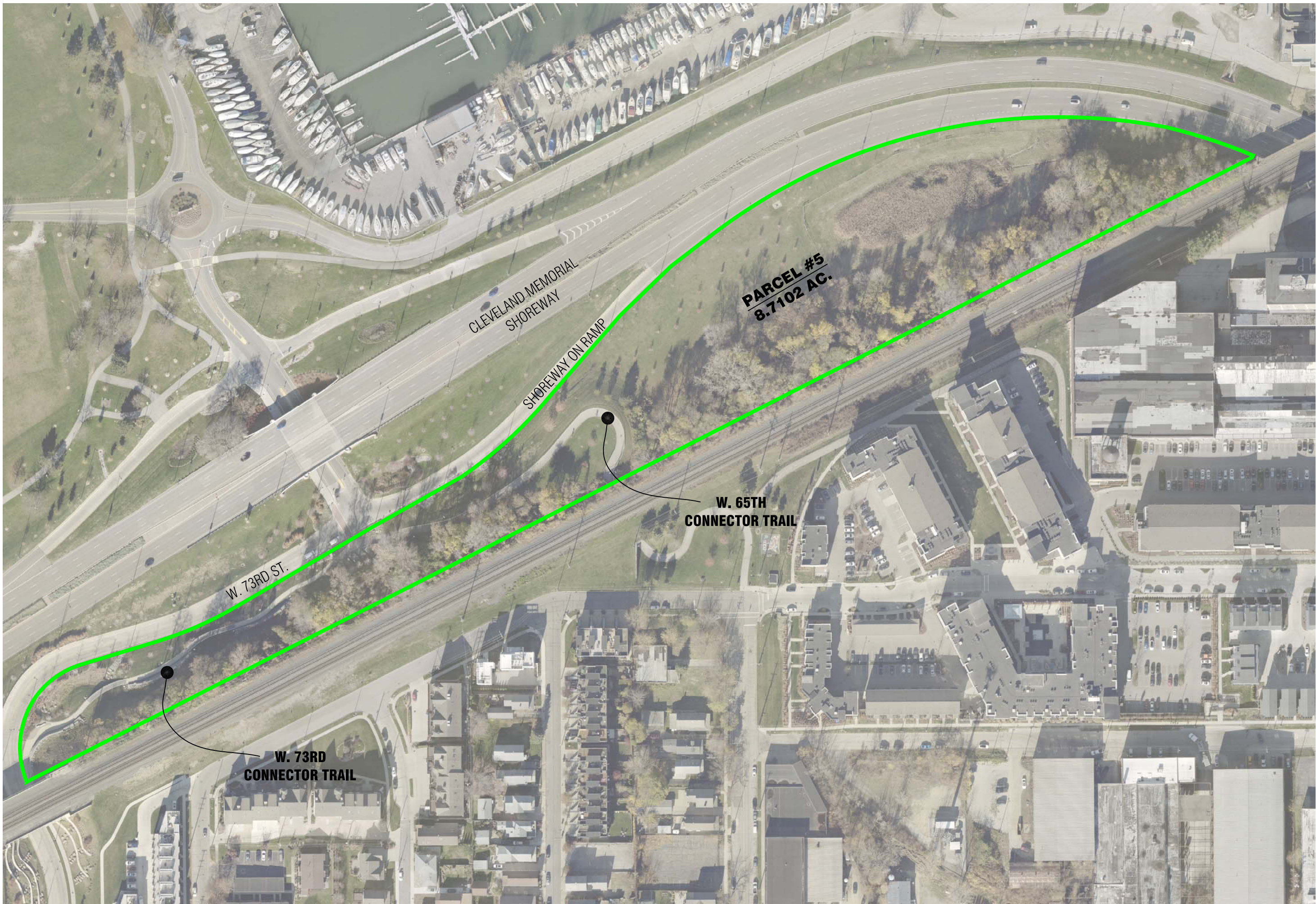
SHOREWAY ON RAMP



CALCULATED	APK
	CHECKED

EDGEWATER LEASE AMENDMENTS 2021
PARCEL #4 - LAKEFRONT RESERVATION





PARCEL #5
8.7102 AC.

W. 73RD ST.

W. 73RD
CONNECTOR TRAIL

CLEVELAND MEMORIAL
SHOREWAY

SHOREWAY ON RAMP

W. 65TH
CONNECTOR TRAIL

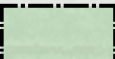



CALCULATED	APK	CHECKED

EDGEWATER LEASE AMENDMENTS 2021
PARCEL #4 - LAKEFRONT RESERVATION



LAKESIDE YACHT CLUB

 Lakeside Yacht Club Land

 Land Removed by Lease Modification

Lakeside Yacht Club Before Lease Modification: ±23 acres

Lakeside Yacht Club After Lease Modification: ±23 acres

