

Abutting Property Owners to Roadway Parcel No. 101-11-003

Flats East Phase 2 LLC, an Ohio limited liability company

Deed 202109170282 – Parcel Nos. 101-13-036, 101-11-017 and 101-01-015

AP 1155 W 11th Property, LLC, a Delaware limited liability company

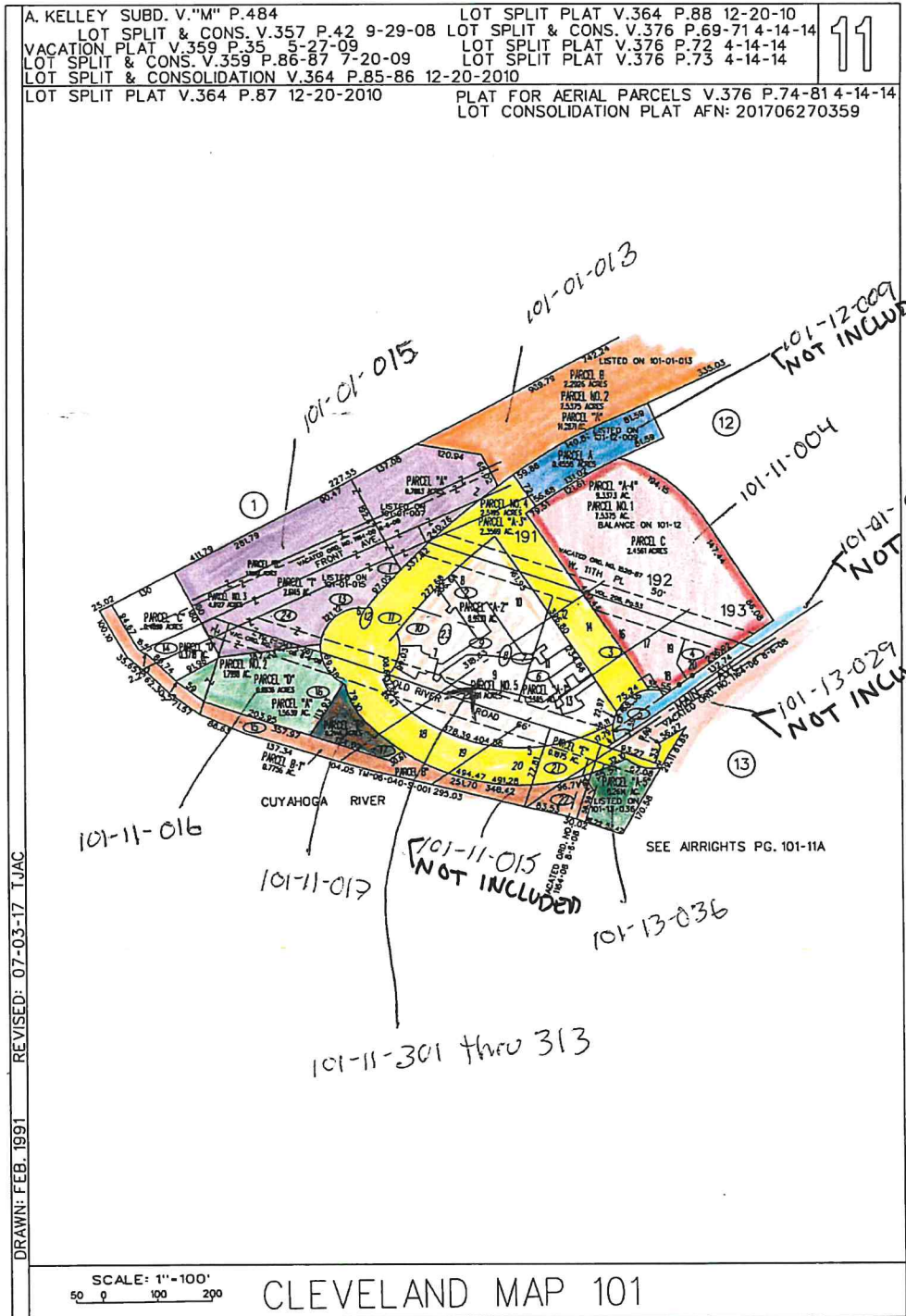
Deed 202012300438 – Parcel No. 101-11-004

Flat East Northeast Surface Parking LLC, an Ohio limited liability company

Deed 201703280734 – Parcel No. 101-01-013

Cleveland Cuyahoga County Port Authority

Deed 201703280734 – Parcel Nos. 101-11-016 and 101-11-301 thru 313



DRAWN: FEB. 1991 REVISED: 07-03-17 TJAC