

- LEGEND**
- M = Monument Box Found
  - = Iron Pin Found
  - = Iron Pipe Found
  - = 5/8"x30" Iron Pin Set
  - = Drill Hole Set / Found
  - ⊕ = P.K. Nail Set / Found
  - ⊕ = Centerline

**BASIS OF BEARINGS**  
 The centerline of East 55th Street as North 00°00'00" East is an assumed bearing and is used to indicate angles only.

**NOTE**  
 Note: ● Denotes 5/8"x30" iron pins set and capped "Riverstone Company-PS6747-PS8646"

**REFERENCE SURVEYS**

- 1.) Cleveland Survey Records (CSR)
- 2.) L.M. Southern & W.S. Chamberlain's Subdivision as recorded in Volume 11, Pages 42-43 of Cuyahoga County Map Records. (Plat)
- 3.) Vacation of Hawthorne Court S.E. as recorded in Volume 210, Page 26 of Cuyahoga County Map Records.
- 4.) Vacation of East 57th Street as recorded in Volume 215, Page 27 of Cuyahoga County Map Records.
- 5.) The Plat of Consolidation as recorded by the plat in AFN. 201911180383 of Cuyahoga County Records.
- 6.) Consolidation and Assembly, Volume 285, Page 44 of Cuyahoga County Map Records.
- 7.) Lot Consolidation, Volume 346, Page 56 of Cuyahoga County Map Records.

**OWNERSHIP TABLE**

P.P.N.	Ownership	Recording Information
118-18-020	City of Cleveland Land Reutilization Program	Volume 91-4547, Page 12
118-18-021	City of Cleveland Land Reutilization Program	Volume 91-6043, Page 25
118-18-022	City of Cleveland Land Reutilization Program	Volume 91-6043, Page 25
118-18-023	City of Cleveland Land Reutilization Program	AFN. 202206240145
118-18-024	City of Cleveland Land Reutilization Program	AFN. 202206240145
118-18-025	City of Cleveland Land Reutilization Program	AFN. 201112150129
118-18-026	City of Cleveland Land Reutilization Program	AFN. 200411011257
118-18-027	City of Cleveland Land Reutilization Program	Volume 92-4187, Page 44
118-18-028	City of Cleveland Land Reutilization Program	AFN. 201509230305
118-18-029	Robert Young	AFN. 201611210317
118-18-030	IFS Properties LLC	AFN. 202212160362
118-18-031	IFS Properties LLC	AFN. 202212160362
118-18-032	City of Cleveland Land Reutilization Program	Volume 92-7008, Page 26
118-19-028	City of Cleveland Land Reutilization Program	Volume 90-4734, Page 29
118-19-029	Wavie G. & Octavia Williams	Volume 94-04144, Page 51
118-19-030	Wavie G. & Octavia Williams	AFN. 202204180215
118-19-031	City of Cleveland Land Reutilization Program	Volume 15454, Page 397
118-19-032	City of Cleveland Land Reutilization Program	AFN. 201206260140
118-19-033	City of Cleveland Land Reutilization Program	AFN. 201002110334
118-19-034	City of Cleveland Land Reutilization Program	Volume 95-04322, Page 29
118-19-100	City of Cleveland Land Reutilization Program	AFN. 200012140834
118-19-103	City of Cleveland Land Reutilization Program	AFN. 20050111081

**PLAT OF VACATION OF PART OF EAST 59TH STREET AND PART OF HAWTHORNE COURT**

Ordinance No. \_\_\_\_\_ Passed \_\_\_\_\_  
 Situated in the City of Cleveland, County of Cuyahoga, and State of Ohio and being part of Original 100 Acre Lots No. 334.

**VACATION CLAUSE**

This Vacation Plat is made in accordance with the provisions of ordinance no. \_\_\_\_\_, passed by the council of The City of Cleveland the \_\_\_\_\_ day of \_\_\_\_\_, 20\_\_\_\_.

Richard Switalski - Platting Commissioner

The hatched/shaded area shown hereon is vacated by ordinance no. \_\_\_\_\_

passed by the council of The City of Cleveland the \_\_\_\_\_ day of \_\_\_\_\_, 20\_\_\_\_.

Patricia Britt - Clerk of Council

**CERTIFICATION**

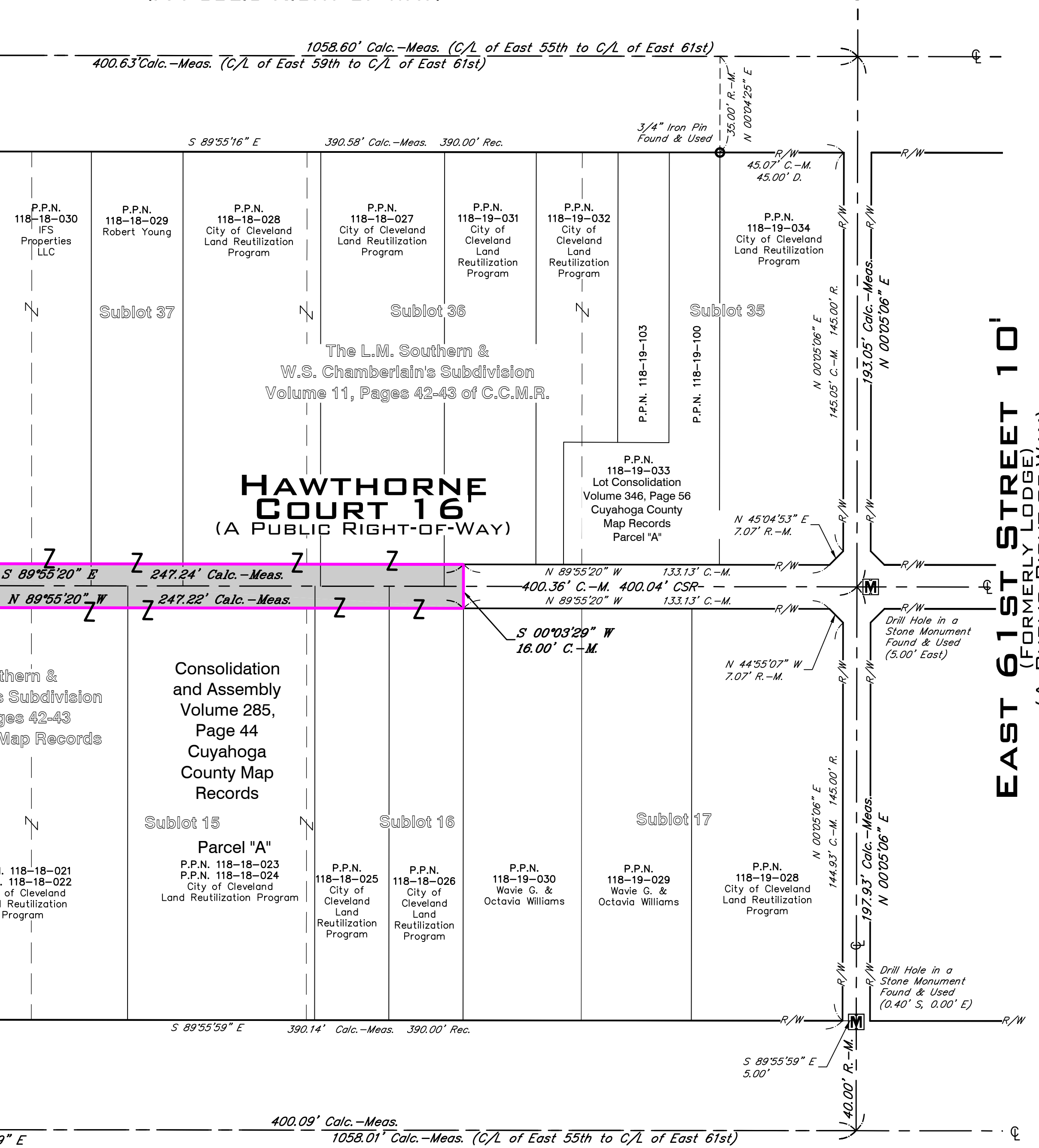
This plat was prepared from a field survey, analysis of recorded plats, recorded deeds, and city survey records. Bearings shown hereon are to an assumed meridian and are intended to indicate angles only. Distances are given in feet and decimal parts thereof. All of which I certify to be correct to the best of my knowledge. I hereby certify I have surveyed the subject premises and prepared this drawing in accordance with the provisions of Chapter 4733-37 of the Ohio Administrative Code.

**Preliminary for Review**

Brian Siebenthal P.S. No. 8740 Date February 27, 2023

Note: ● Denotes 5/8"x30" iron pins set and capped "Riverstone Company-PS6747-PS8646"

**HAWTHORNE AVENUE 70' (FORMERLY THIRD AVENUE) (A PUBLIC RIGHT-OF-WAY)**



**CENTRAL AVENUE 80' (FORMERLY GARDEN STREET) (A PUBLIC RIGHT-OF-WAY)**

**ALLEY VACATION AREA**  
 0.1658 Acres 7,221 Sq.Ft.

**RIVERSTONE**  
 LAND SURVEYING - ENGINEERING - DESIGN  
 3800 LAKESIDE AVENUE - SUITE 100  
 CLEVELAND - OHIO - 44114  
 PHONE: (216) 491-2000 FAX: (216) 491-9640  
 WWW.RIVERSTONE.SURVEY.COM