



Agenda

SIFI NETWORKS

FIBERCITY®

COMMUNITY BENEFITS

COMMUNITY ENGAGEMENT & AWARENESS

CONSTRUCTION PROCESS

PARTNERSHIP OUTCOME





SfM Networks

FiberCity[®] Networks
CITYWIDE DIGITAL ENABLEMENT

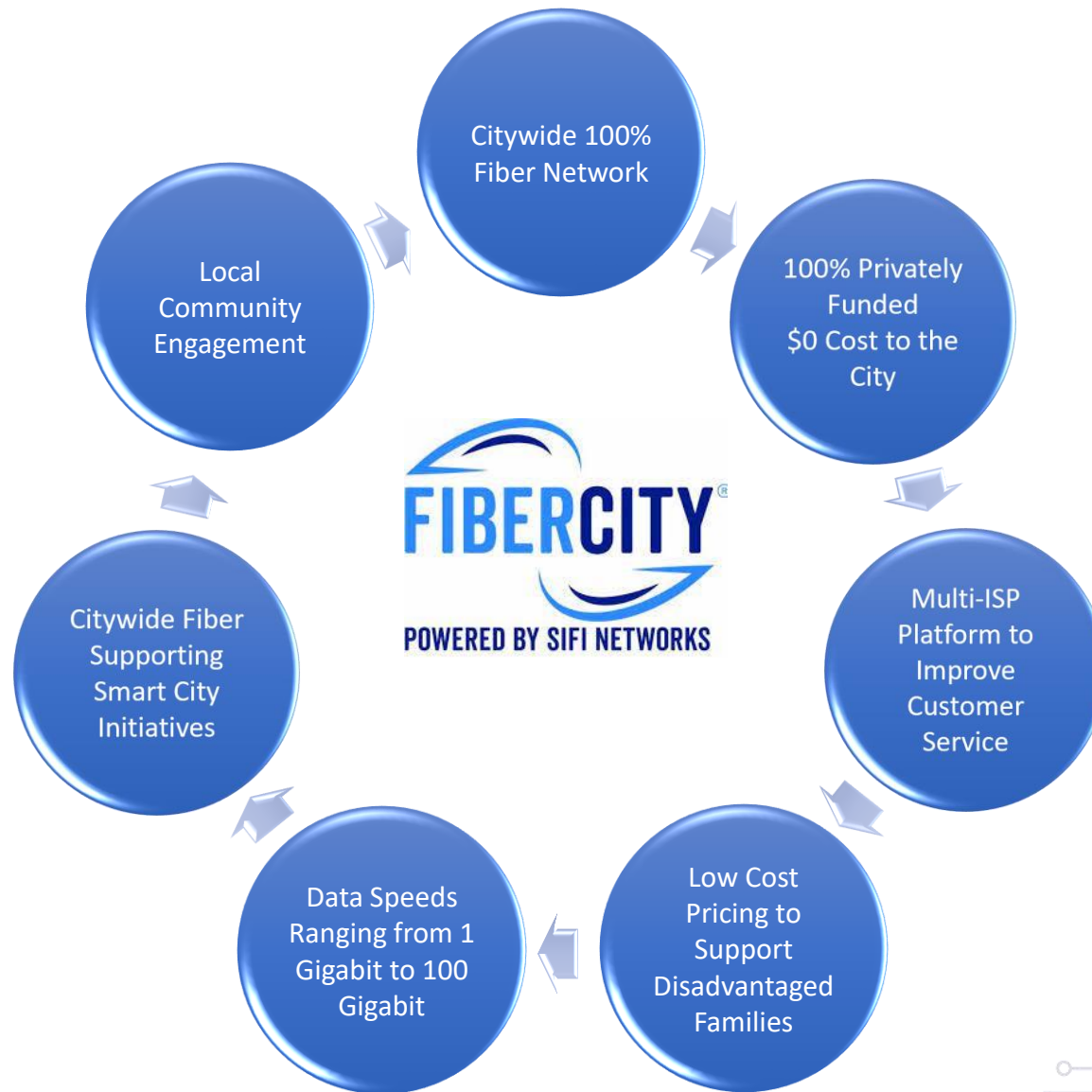


WHO IS SIFI NETWORKS

- Infrastructure Developer
- Citywide Last Mile Fiber Connectivity
- Backed by \$600 Billion Dollar Pension Fund
- Pioneering Open Access Networks
- Investing in Underserved Communities



WHAT IS A FIBERCITY®

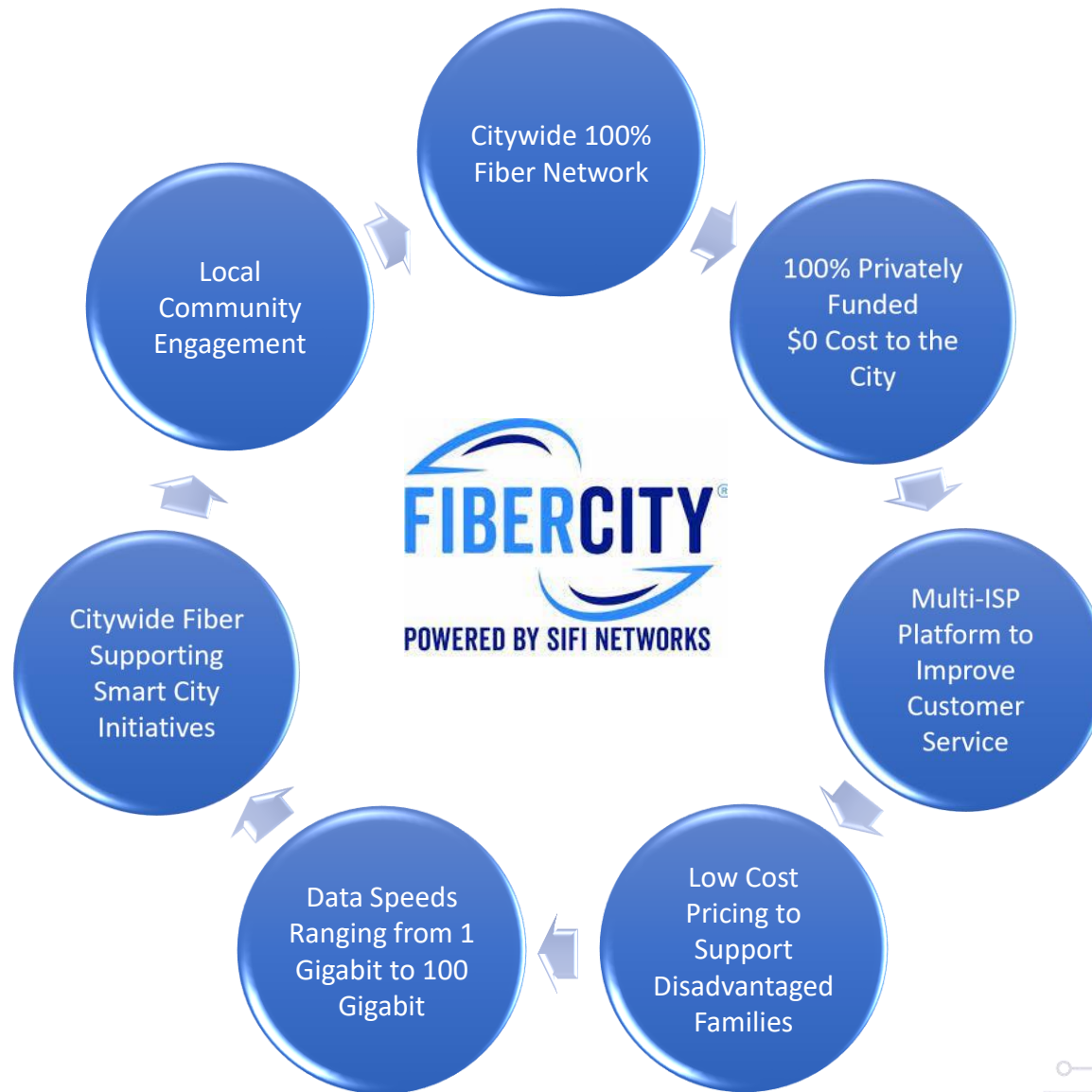


CITYWIDE PRIVATE INVESTMENT



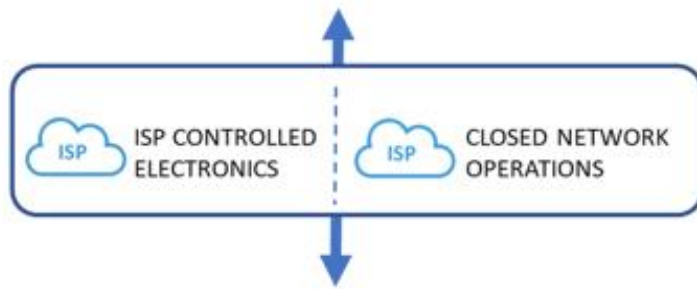
Global Smart City Fund

WHAT IS A FIBERCITY®



WHAT IS OPEN ACCESS

TRADITIONAL BROADBAND (closed network)



Single ISP
Limited Coverage
Limited Products &
Services



Best-in-Class ISPs
Citywide Coverage
Access to Multiple Products & Services

FIBERCITY[®] ISP PARTNERS



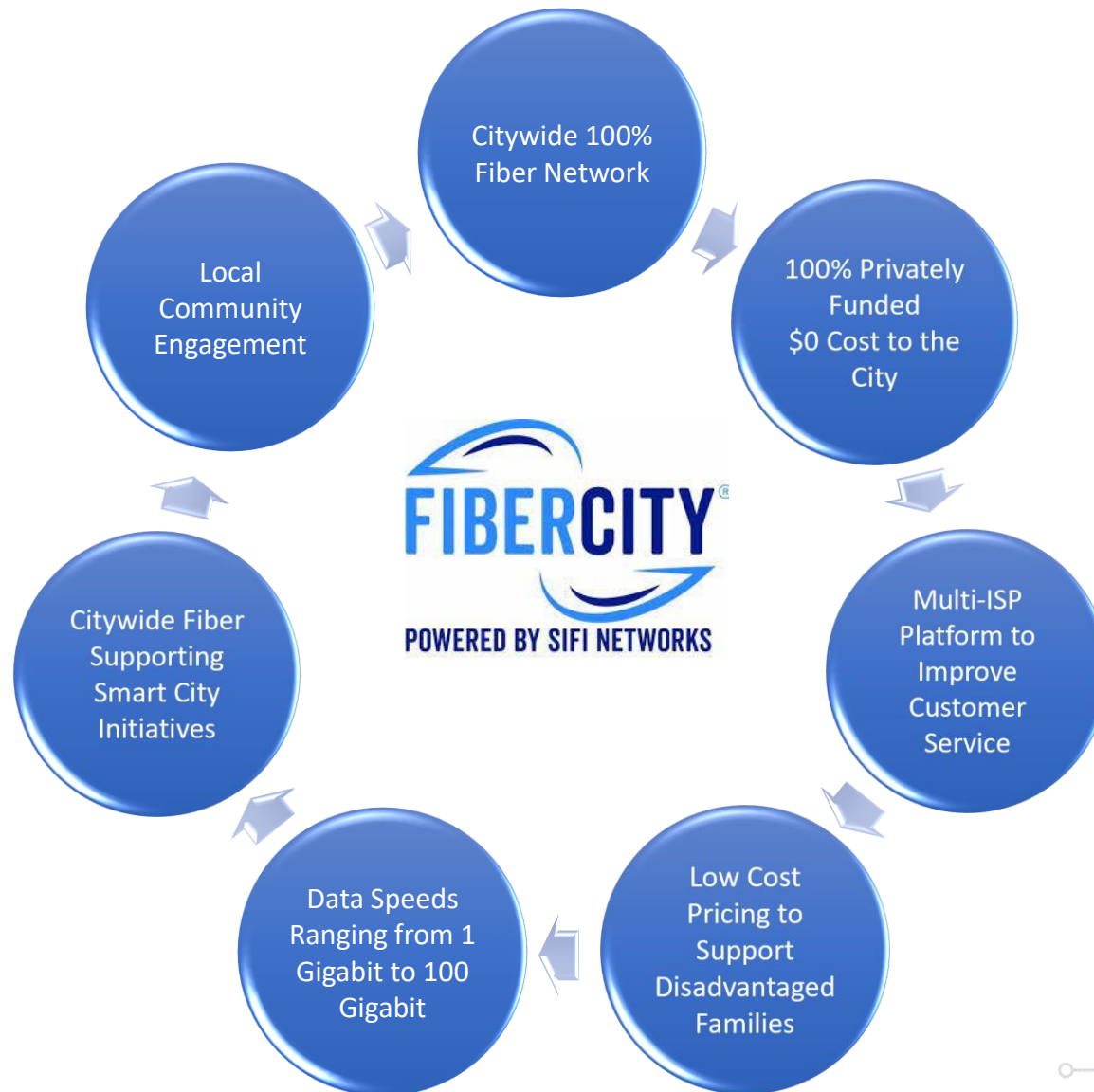
LEADERSHIP

SALES &
MARKETING

CUSTOMER
SERVICE

FINANCIAL
STABILITY

WHAT IS A FIBERCITY®



SUPPORTING DISADVANTAGED FAMILIES



Lending a HELPING HAND WITH FIBERCITY® AID



OUR CITYWIDE FIBER OPTIC NETWORKS PROMOTE EQUALITY, PROVIDING EVERYONE WITH THE ABILITY TO CONNECT. HOWEVER, AVAILABILITY DOESN'T GO FAR ENOUGH FOR EVERYONE. WE ARE AWARE THAT LOWER INCOME HOUSEHOLDS THAT WOULD BENEFIT FROM CONNECTIVITY THE MOST MAY NOT BE ABLE TO AFFORD SERVICE.

BRIDGING THE DIGITAL DIVIDE HAS ALWAYS BEEN PARAMOUNT TO US, SO WE ARE ADDRESSING THIS KEY ISSUE WITH OUR FIBERCITY® AID PROGRAM. WITH SIFI NETWORKS' SUBSIDY WE WILL BE ABLE TO PROVIDE 1 GIG AT A RETAIL RATE OF CIRCA \$30 PER MONTH AND WITH PHILANTHROPIC AND GOVERNMENT SUBSIDY WE WILL STRIVE TO REDUCE THIS FURTHER.

HOW THE PROGRAM WORKS:



SIFI NETWORKS ALLOCATES A MAXIMUM NUMBER OF ADDRESSES THAT CAN QUALIFY FOR THE SUPPORT



THE CITY SPECIFY WHICH ADDRESSES QUALIFY, THESE WILL BE UPDATED ANNUALLY



SIFI NETWORKS OFFERS A HEAVILY REDUCED WHOLESALE RATE TO OUR ISPS WHO IN TURN OFFER A LOW COST SERVICE TO THE QUALIFYING RESIDENT

SPEAK TO US TODAY ABOUT FIBERCITY® AID FOR YOUR CITY



Federal Communications Commission

Affordable Connectivity Program

Are you getting your \$30/month internet discount?

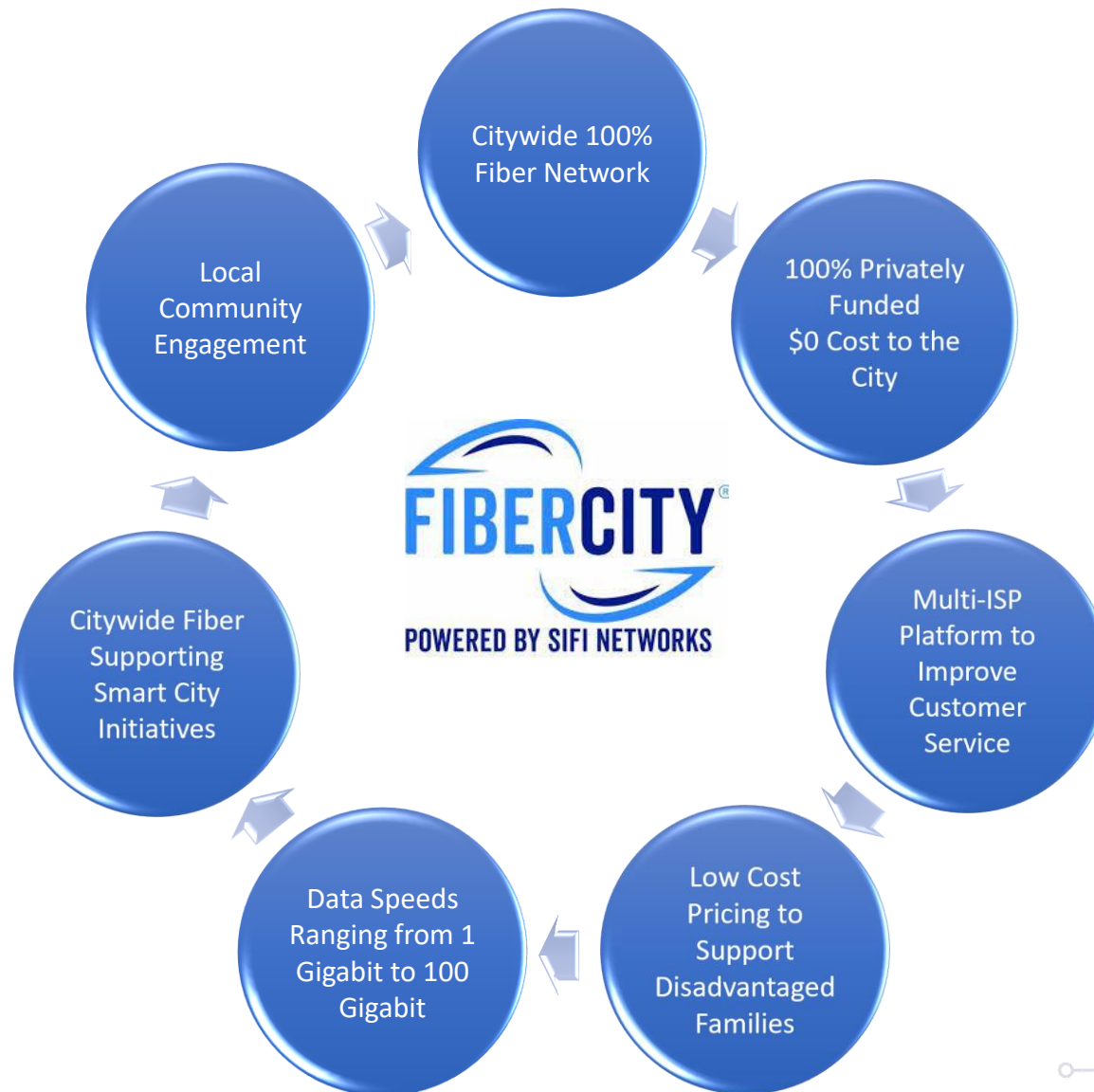


If you participate in any of the following programs, you automatically qualify for the ACP:

- SNAP
- Medicaid
- Federal Public Housing Assistance
- Supplemental Security Income (SSI)
- WIC
- Veterans Pension or Survivor Benefits
- or Lifeline

Apply Now at AffordableConnectivity.gov

WHAT IS A FIBERCITY®



MORE THAN JUST GIGABIT BROADBAND!



Omniflow

NOKIA

Brisa

Signify
the meaning of light

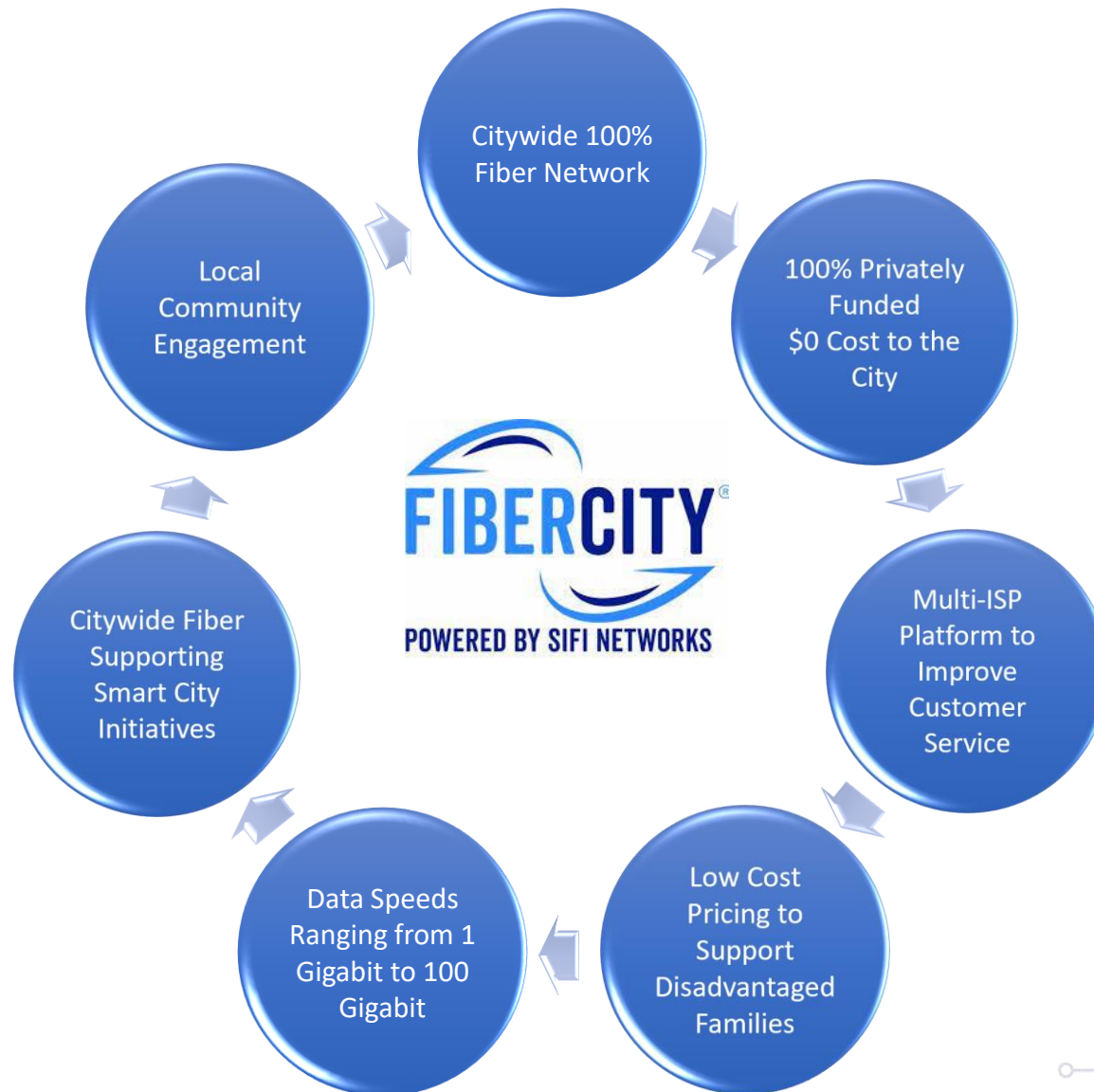
Siklu

citybeacon
hyperconnected

ClearWorld

IoT

WHAT IS A FIBERCITY®



COMMUNITY ENGAGEMENT AND SPONSORSHIP

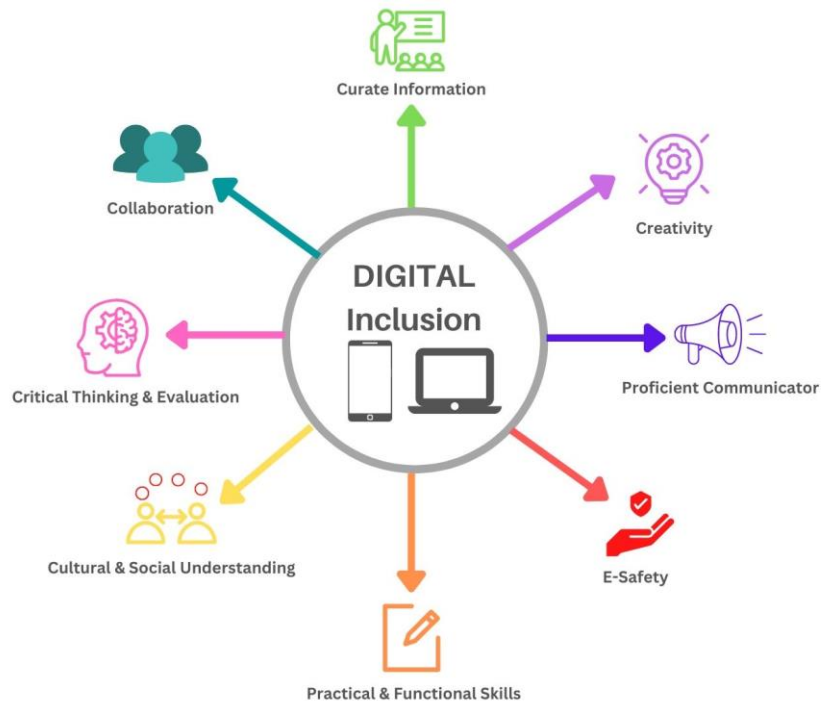
Weekly Food Truck Eat and Greet



Community Events



CLOSING THE DIGITAL DIVIDE THROUGH EDUCATION



Provide:

Digital Inclusion: Provide communities with the tools to access technology

Educate:

Digital Literacy: Educate communities on what technology & services are available to them

Apply:

Digital Preparedness: With the proper tools and education, communities can benefit from the technology now at their fingertips

COMMUNITY BENEFITS

Removes the Digital Divide



10 Gigabit internet to the home - 100 Gigabit to businesses



Subsidized Gigabit internet for disadvantaged families



Supporting remote home working and local business growth

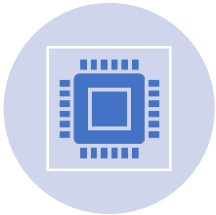


Any premise can access any service from any ISP



Next generation services: smart home, tele-medicine,

CITYWIDE BENEFITS



Best-in-class infrastructure supporting increasing bandwidth demands for generations to come



Dig Once – Minimal disruption & environmental impact whilst providing consumer choice



Citywide enablement providing access to all whilst supporting economic growth & smart city initiatives



Zero cost to the municipality or tax-payer towards network construction



Employment of local resources



Municipal building access

CONNECTING OVER 2.3 MILLION PREMISES

California
Bakersfield, CA
Approx 164,000 units

Buena Park, CA
Approx 29,000 units

Cathedral City, CA
Approx 24,000 units

Corona, CA
Approx 56,000 units

Downey, CA
Approx 40,000 units

Escondido, CA
Approx 62,000

Folsom, CA
Approx 34,000 units

Fountain Valley, CA
Approx 25,000 units

Fullerton, CA
Approx 53,000 units

Kern County,
Approx 73,000 Units

Lancaster, CA
Approx 61,000 units

Lake Forest, CA
Approx 37,000 units

Lynwood, CA
Approx 17,000 units

Marysville, CA
Approx 6,000 units

Oceanside, CA
Approx 74,000 units

Olivehurst & Linda
Approx 14,000 units

Palmdale, CA
Approx 50,000 units

Pico Rivera, CA
Approx 19,000 units

Pittsburg, CA
Approx 26,000 units

Placentia, CA
Approx 20,000 units

Rancho Cordova, CA
Approx 35,000 units

Riverside, CA
Approx 116,000 units

Rosemead, CA
Approx 18,000 units

Simi Valley, CA
Approx 47,000 units

Ventura CA
Approx 60,000 units

Yuba City, CA
Approx 27,000 units

Illinois
Rockford, IL
Approx 78,000 units

Decatur, IL
Approx 41,000 units

Wisconsin
Kenosha, WI
Approx 47,000 units

Michigan
Farmington Area, MI
Approx 47,000 units

New York
Saratoga Springs, NY
Approx 17,000 units

Massachusetts
Salem, MA
Approx 22,000 units

Connecticut
East Hartford, CT
Approx 24,000 units

Arizona
Mesa, AZ
Approx 240,000 units

New Mexico
Albuquerque, NM
Approx 297,000 units

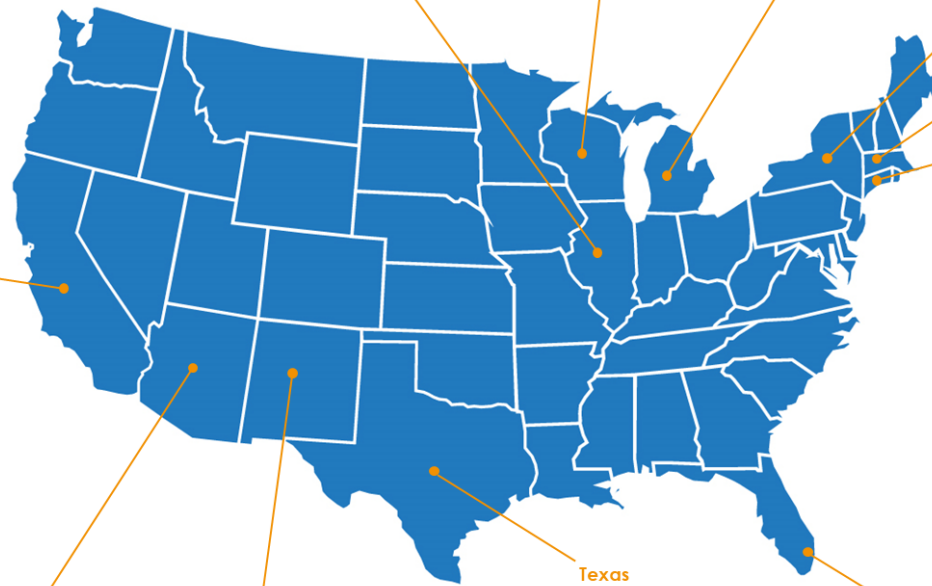
Texas
Arlington, TX
Approx 171,000 units

Odessa, TX
Approx 56,000 units

McKinney, TX
Approx 84,000 units

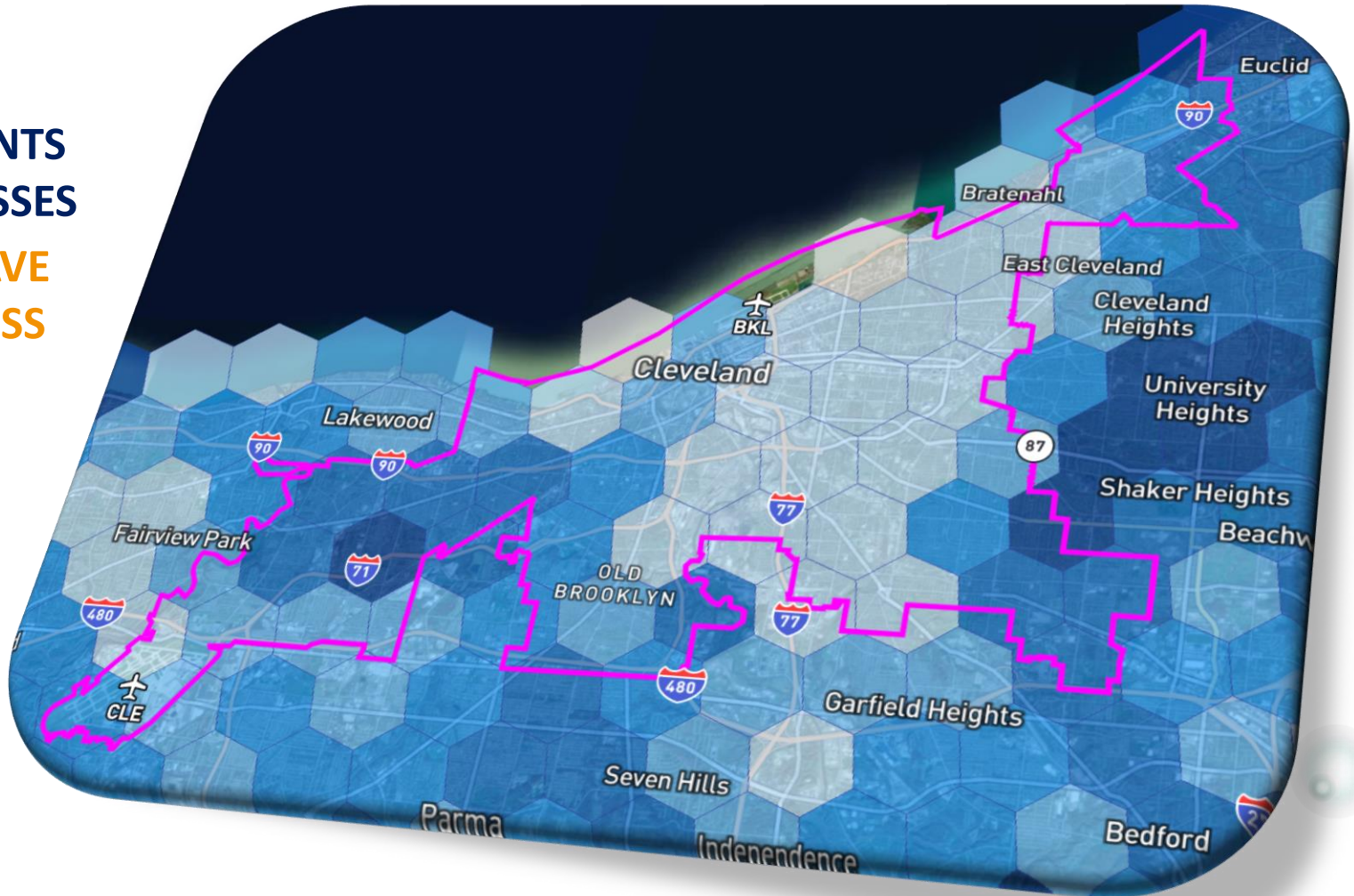
Sugar Land, TX
Approx 45,000 units

Florida
Margate, FL
Approx 29,000 units

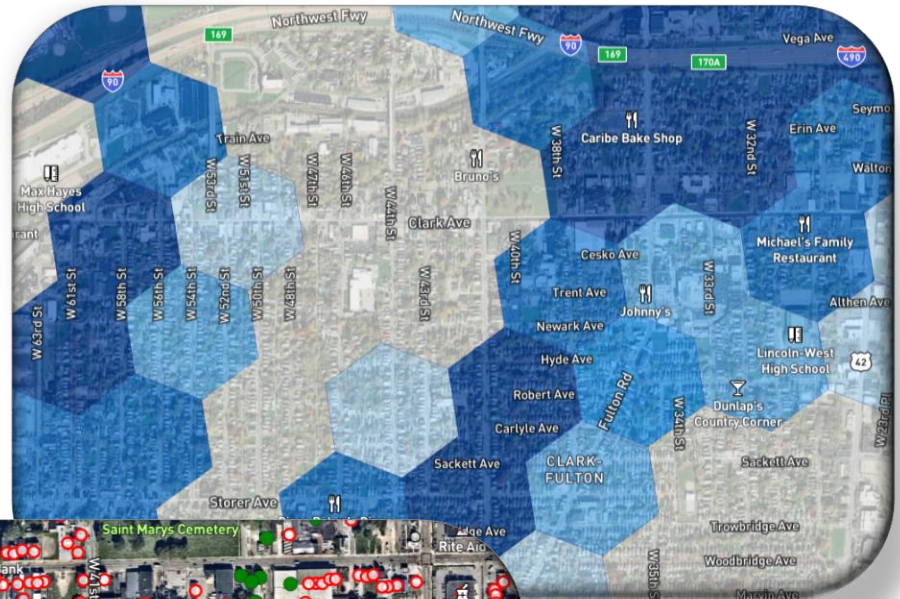
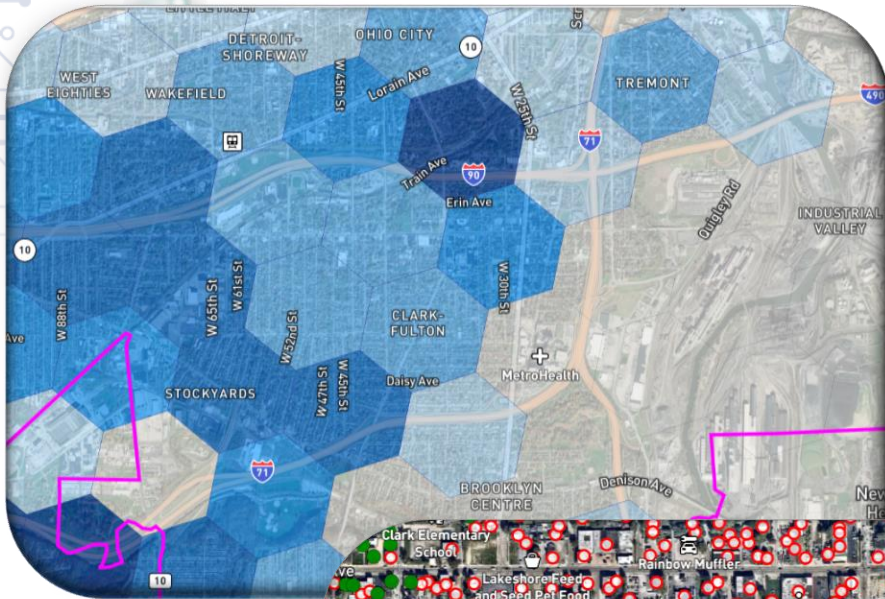


EXISTING FIBER COVERAGE

65% RESIDENTS
64% BUSINESSES
DO NOT HAVE
FIBER ACCESS



EXISTING FIBER COVERAGE






Always Underground Inc

- WBEC (Women Owned Business)
- International Brotherhood of Electrical Workers (IBEW) staffed
- Gold Shovel Certified for safety in underground construction
 - www.alwaysunderground.net



MORE ABOUT AUI

- 9 Midwest office locations
 - 10 million feet currently under construction with Sifi
 - 6 million feet in in 2 additional cities to start in the next 9 months
 - In 2022 AUI completed 2.65 Million feet of underground construction
 - We hire locally through the IBEW and are active in the apprenticeship program offered through the union.
 - We self perform 85% of our work and utilize local sub-contractors
- 

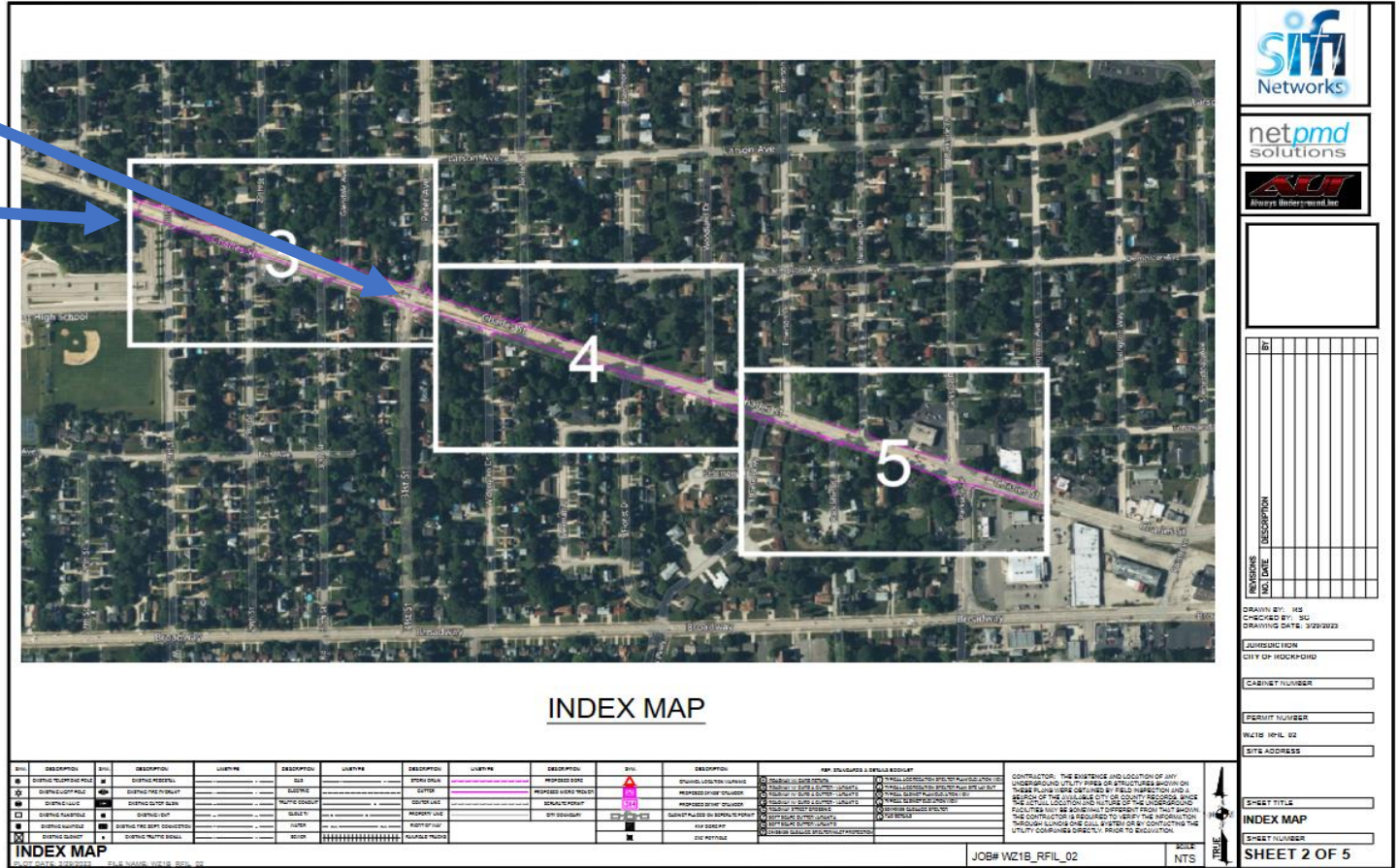
WHAT TO EXPECT LEADING UP TO CONSTRUCTION

- 1 on 1 engagement with each ward representative prior to construction starting to explain methods and procedures
- Engagement with each department in the city
- Engagement with labor leaders and economic development personnel
- Resident notification in multiple forms
- Clear plans provided to all utility locate entities
- We will have an understanding of Cleveland CIP projects and areas we need to coordinate with the city

WHAT TO EXPECT LEADING UP TO CONSTRUCTION

Starting point 5/3


Ending point 5/4



Intersections being bored due to CIP project. No trenching or handholes. Work begins 5/3 and will be done in stages through may and June. This falls in Sub-zone 1B




CONSTRUCTION READY PROCESS

- Locates are called in and marks down
 - Door hangers 5-10 days prior to construction
 - Handholes installed in parkways
 - Cores are completed at intersections
 - Bore, driveway aprons, trees and intersections
 - Trench and place micro duct
 - Restoration both hardscape and softscape
 - Fiber installation
 - Hut construction and cabinets will be done concurrently
- 

COMMUNITY PROJECT AWAERNESS

Community information – City Specific
Construction Website, Leaflets, Business Cards
and Door Hangers





CONSTRUCTION IS HERE!

You may see crews from AUI in your neighborhood! Conduits are being buried in either a small incision within the roadway, or in the parkway behind the curb. You may also see small ground level chambers being installed.


Please turn over to see our frequently asked questions.

Follow us for updates!

[f](#) [i](#) [t](#) [i](#) [n](#)

CONSTRUCTING WITH CARE

SIFI NETWORKS SHALL BE RESPONSIBLE FOR MAINTAINING AND REPAIR OF THE SIDEWALK JOINT, CURBS, GUTTERS AND PARKWAY IMPACTED BY SIFI NETWORKS' CONSTRUCTION, FROM THE EDGE OF THE PUBLIC RIGHT OF WAY TO AND BETWEEN THE CURB, AND TO THE PRIVATE PROPERTY LINE.



TURN OVER FOR OUR FAQs


INSTALLATION AREA ENCOMPASSES - SIDEWALK, PARKWAY, CURB OR ROADWAY

WE WILL RESTORE OR REPAIR THE WORK AREA WHEN INSTALLATION IS COMPLETE


IF YOU HAVE ANY QUESTIONS ABOUT CONSTRUCTION PLEASE CALL 888 766 9475

IT'S MORE THAN JUST A GIG!


www.RockfordFiberCity.com



HOME ABOUT US FIBERCITY NEWS CHANGERS YOUR CONTACT US




Welcome to



POWERED BY SIFI NETWORKS

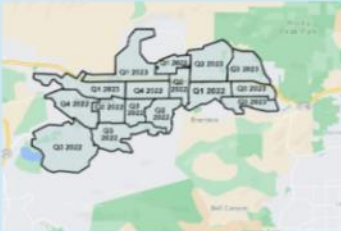
The area surrounding one of the world's largest fiber optic networks is now available in Rockford, Illinois. Contact us today to learn more about this exciting project and how it will impact your area. Based on the current plan.



FIND OUT WHO YOUR INTERNET SERVICE PROVIDERS ARE

FIND OUT MORE

Check YOUR ADDRESS STATUS




The map is split into several work areas:

- It shows commercial districts of which you will enjoy uninterrupted service. You will enjoy a high speed internet service that will allow you to work from home or in the office.
- It shows residential areas of which you will enjoy a high speed internet service that will allow you to work from home or in the office.

What is a FIBERCITY?

SIFI Networks FiberCity is more than just a superficial fiber internet connection to homes and businesses. It will lay out the way for generations to come, bring you more choice of providers, faster to download and upload speeds. It will allow you to work from home or in the office. It will allow you to work from home or in the office.



FIND OUT MORE ABOUT FIBERCITY



POWERED BY SIFI NETWORKS

NOTICE OF CONSTRUCTION

A CITYWIDE FIBER OPTIC NETWORK IS BEING BUILT. PLEASE BE AWARE OF PARKING RESTRICTIONS AS WE INSTALL THE NETWORK.



If you have any questions regarding the construction of the FiberCityS project, contact us:

 +1 (888) 766 9475
 info@sifinetworks.com

CONSTRUCTING WITH CARE

SIFI Networks shall be responsible for maintaining and repair of the sidewalk joint, curbs, gutters and parkway directly impacted by SIFI Networks' construction from the edge of the public right of way to and between the curb, and to the private property line.



INSTALLATION AREA - SIDEWALK, PARKWAY, CURB OR ROADWAY

WE WILL RESTORE OR REPAIR THE WORK AREA WHEN INSTALLATION IS COMPLETE

IT'S MORE THAN JUST A GIG!

FIND OUT MORE AT ROCKFORDFIBERCITY.COM

CONSTRUCTION DOCUMENTATION



CONSTRUCTION DOCUMENTATION

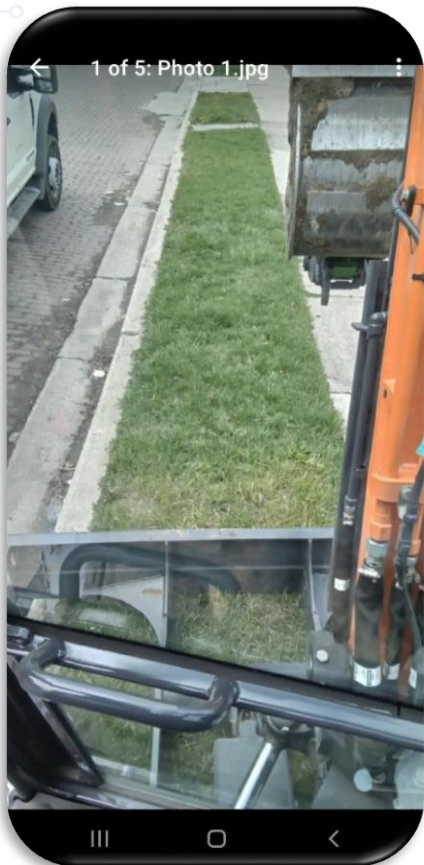


VISIBILITY IN THE COMMUNITY

Workers are easily identifiable in the community



PHASES OF CONSTRUCTION



PHASES OF CONSTRUCTION



PHASES OF CONSTRUCTION



RIGHT OF WAY RESTORATION



Now that restoration has been completed, we would encourage you to water the area covered by the straw matting.

The matting can be removed and disposed of once grass has grown to about 3-4". Grass could start growing between 14 and 30 days but could take up to 60 days.

Ahora que se completó la restauración, le recomendamos que riegue el área cubierta por la estera de paja. La estera se puede quitar y desechar una vez que la hierba haya crecido entre 3 y 4 pulgadas. El césped podría empezar a crecer entre 14 y 30 días, pero podría tardar hasta 60 días.

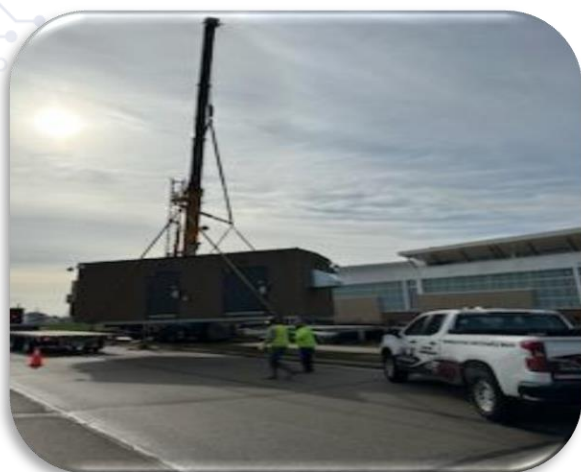
+1 (888) 766 9475

info@sifinetworks.com

SiFiNetworks.com

NETWORK AGGREGATION FACILITIES

Approx. 6 Diverse Facilities for the entire network build out



NETWORK CABINETS

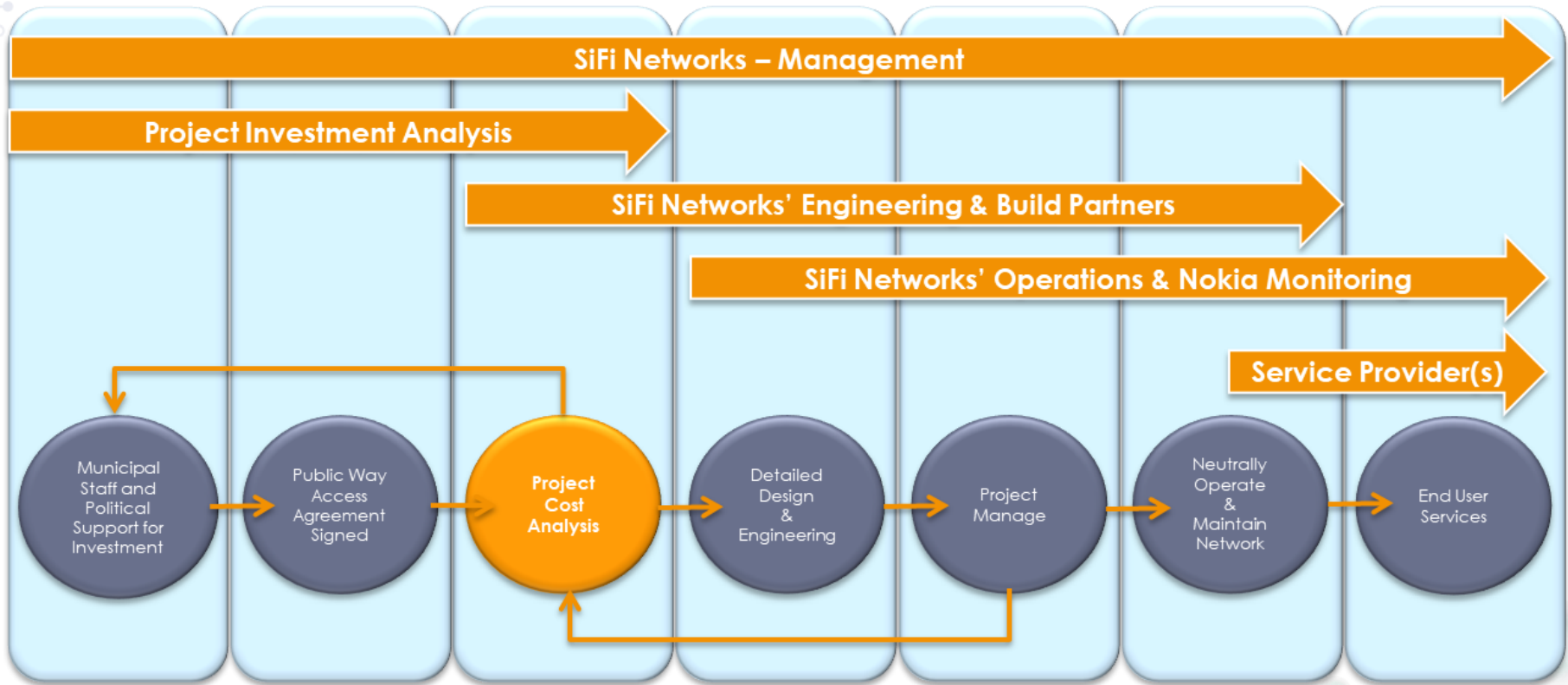
Approx. 270 Cabinets for the entire network build out



CONSISTENT COMMUNITY MESSAGE



FiberCity[®] PROJECT MILESTONES



FIBERCITY® INVESTMENT OUTCOMES

- ✓ Over Half Billion dollars of private investment with \$0 cost to the city
- ✓ Residential and Business service choice, competition, and affordable pricing
- ✓ 10 Gigabit symmetrical broadband connectivity to residential homes
- ✓ FiberCity® Aid supporting disadvantaged families throughout the entire city
- ✓ Citywide Open Access platform driving innovation
- ✓ Local employment for the construction and maintenance of the network
- ✓ Remove the digital divide & drive equality through accessibility
- ✓ Connect any municipal facility to the more than 2600-mile fiber network



Powered by SiFi Networks