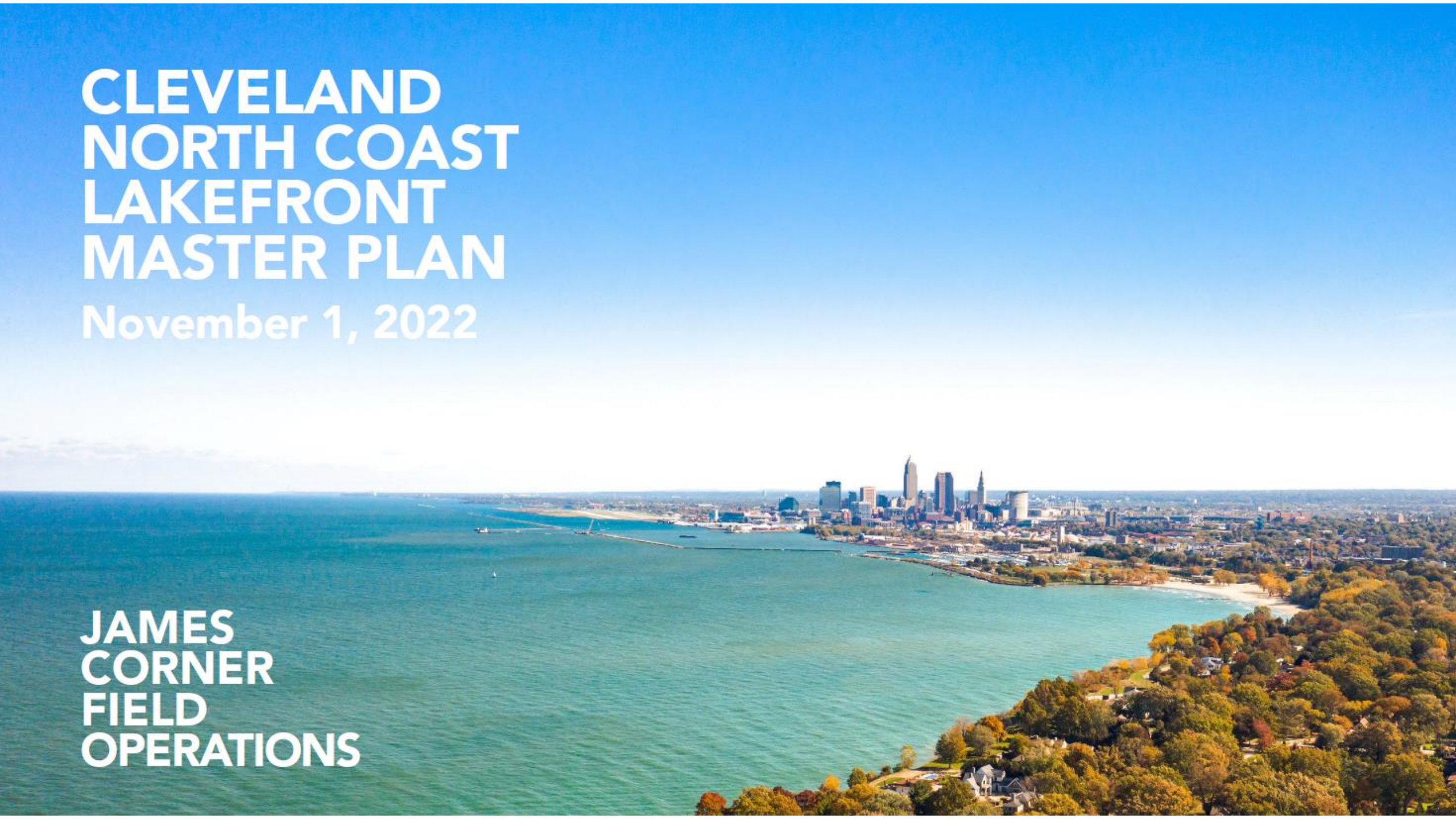


CLEVELAND NORTH COAST LAKEFRONT MASTER PLAN

November 1, 2022

JAMES
CORNER
FIELD
OPERATIONS





Lisa Switkin, RLA, ASLA
Principal-in-Charge
Field Operations



Sahar Moin
Project Manager
Field Operations



Cricket Day
Lead Designer & Planner
Field Operations



Sandra Madison, AIA, NCARB
CEO & Chairperson
RPMI Architects



Gabrielle White
Project Manager
RPMI Architects



Matt Jones, PE, LEED AP BD+C
Civil Managing Principal
MKA



Cary Hirschstein
Partner
HR&A



Rajneesh Sayal, LEED AP
Director
Dharam Consulting



PEOPLE



JAMES
CORNER
FIELD
OPERATIONS

CITIES & NATURE



FIELD OPERATIONS

Project management, planning,
landscape architecture, urban design



DOMINO PARK, BROOKLYN



NAVY YARD, PHILADELPHIA



PUBLIC SQUARE, CLEVELAND

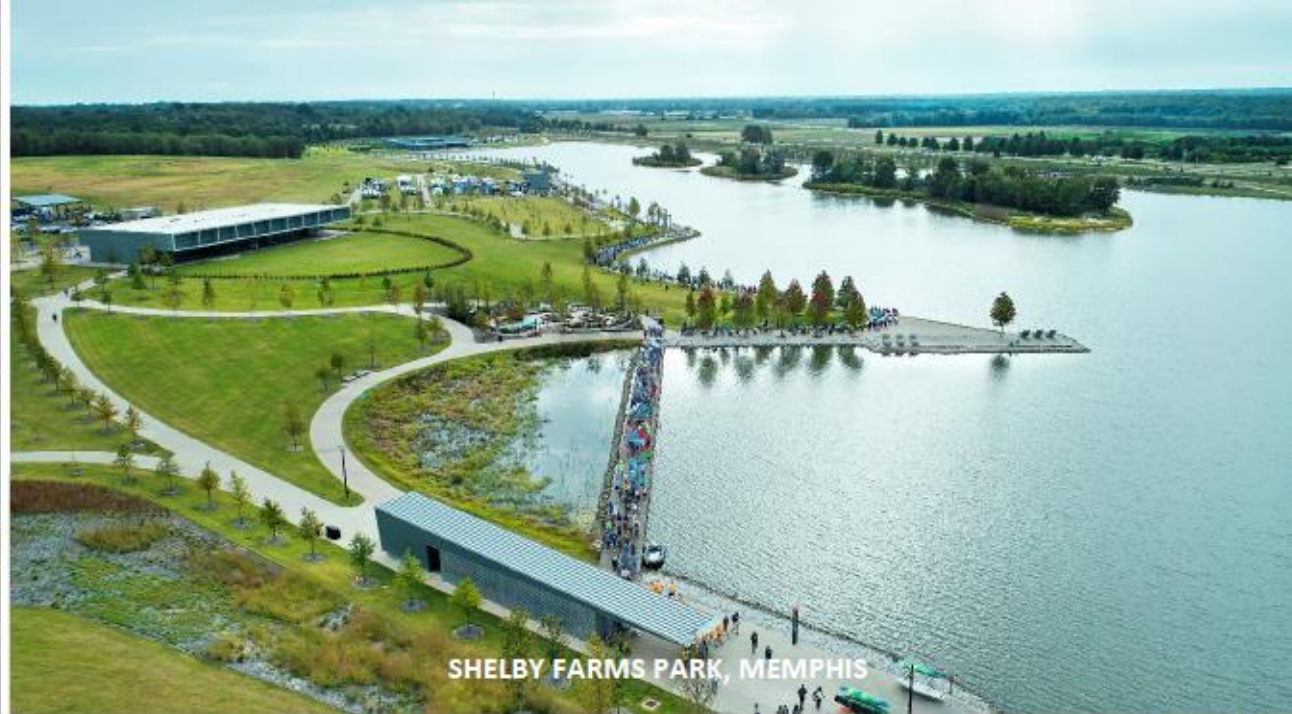


CENTRAL WATERFRONT, SEATTLE

FIELD OPERATIONS



HIGH LINE, NEW YORK



SHELBY FARMS PARK, MEMPHIS



NAVY PIER, CHICAGO

JAMES
CORNER
FIELD
OPERATIONS



RIVERFRONT PARK, NEWARK

RPMI (MWBE)

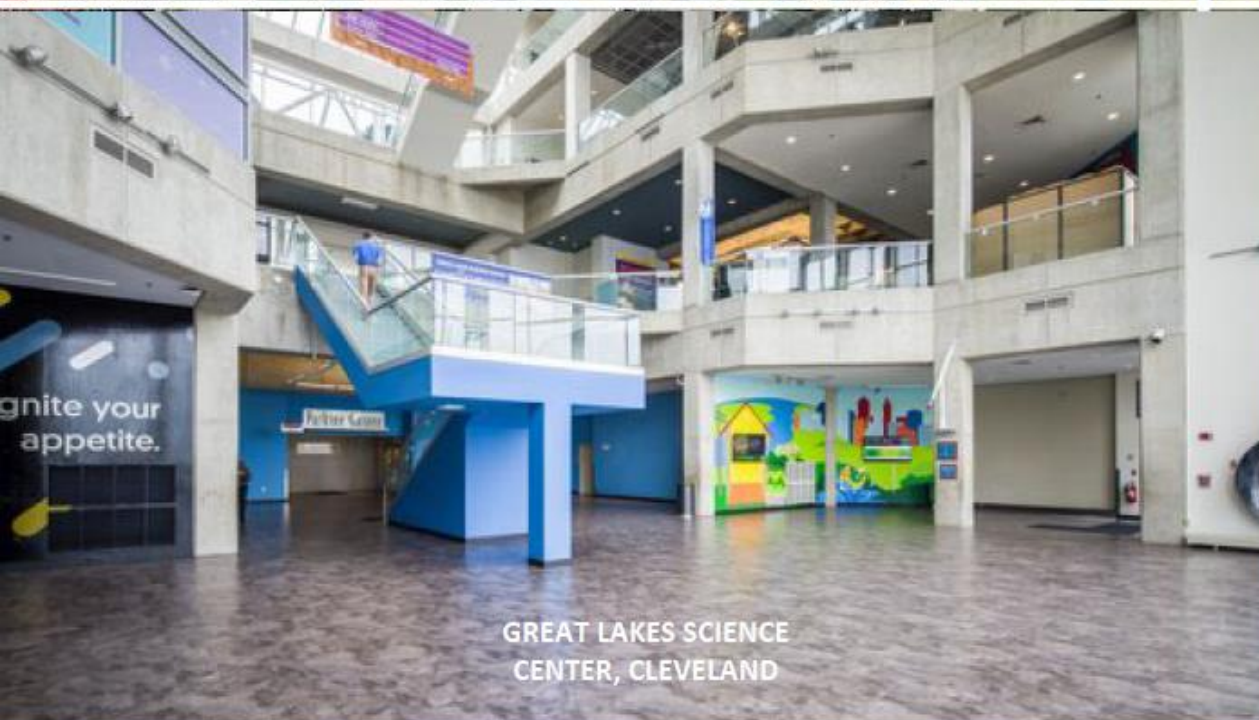
Architecture, development scenarios



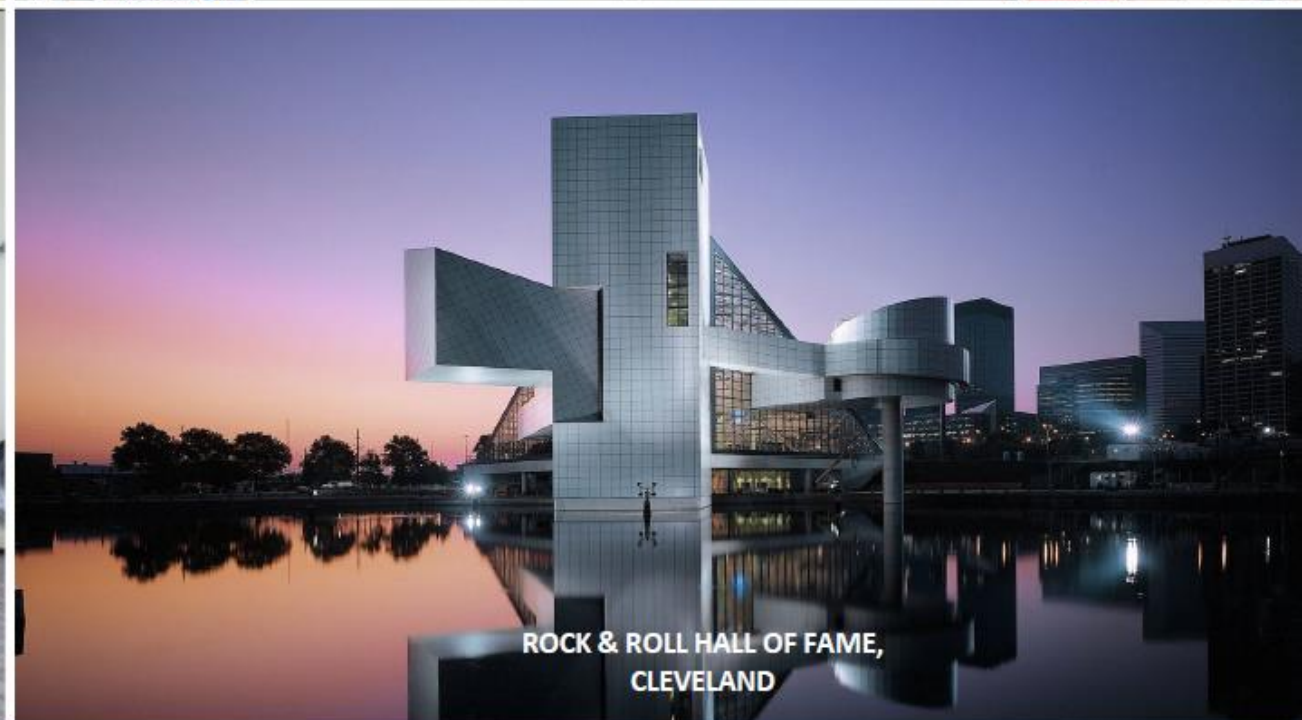
CLEVELAND BROWNS STADIUM



NORTH COAST HARBOR MASTER PLAN, CLEVELAND



GREAT LAKES SCIENCE CENTER, CLEVELAND



ROCK & ROLL HALL OF FAME, CLEVELAND

HR&A

Real estate, economic
development, funding &
partnerships



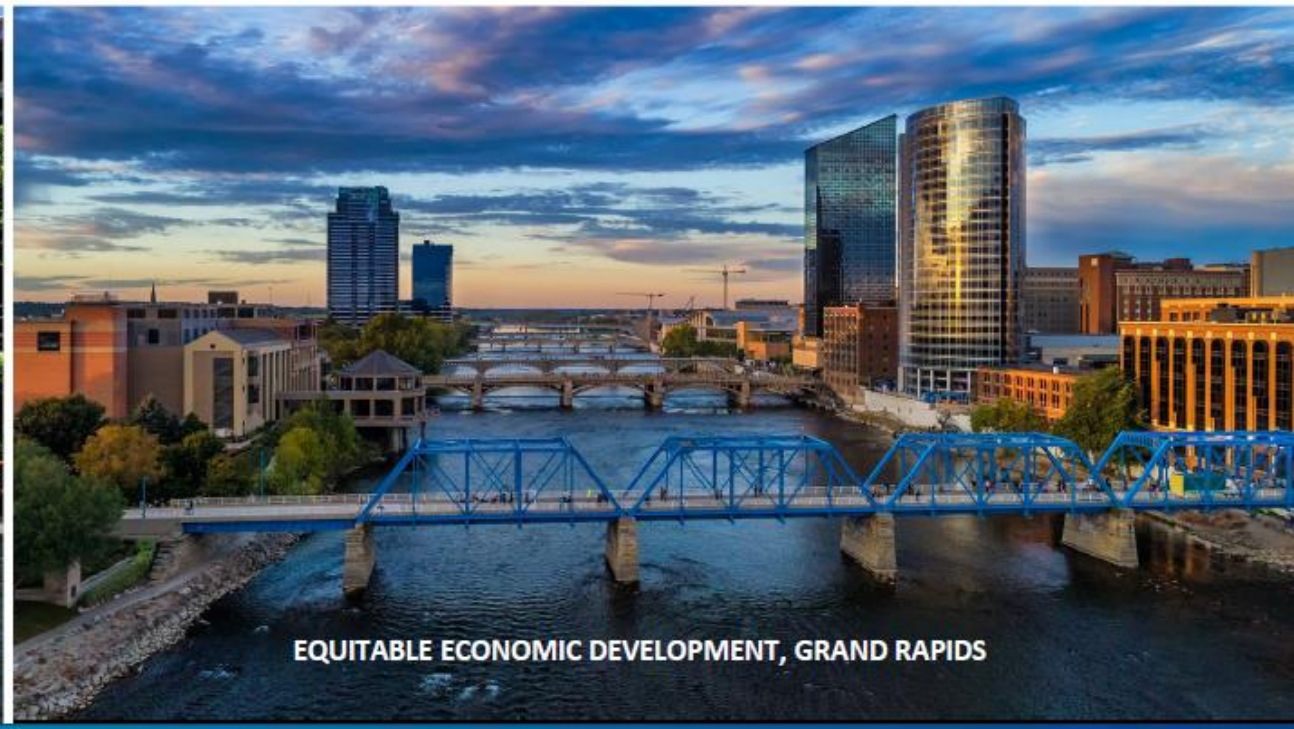
RIVER BALCONY, SAINT PAUL



NORTH COAST LAKEFRONT, CLEVELAND



DISTRICT WATERFRONT REVITALIZATION, ANACOSTIA



EQUITABLE ECONOMIC DEVELOPMENT, GRAND RAPIDS

MKA

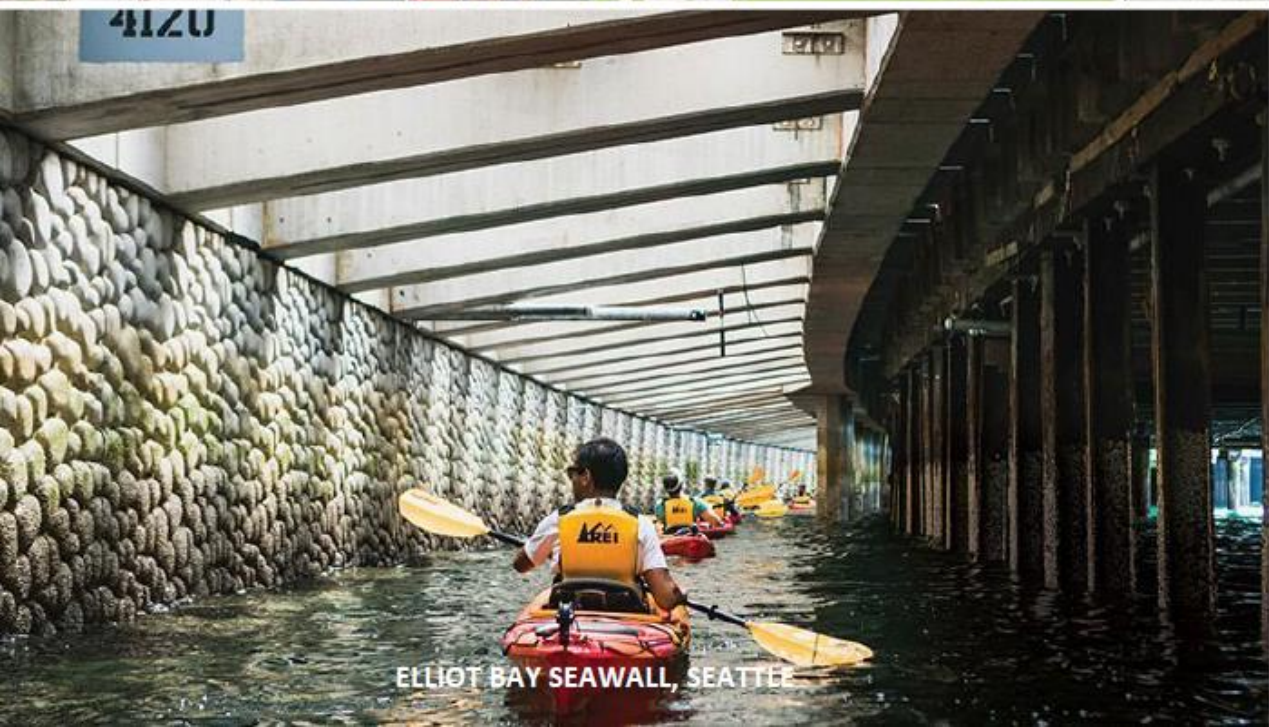
Engineering support



PRESIDIO TUNNEL TOPS, SAN FRANCISCO



MISSOURI RIVERFRONT



ELLIOT BAY SEAWALL, SEATTLE



OLYMPIC SCULPTURE PARK, SEATTLE

DHARAM

Cost & budget advisor



ROCK & ROLL HALL OF FAME EXPANSION, CLEVELAND



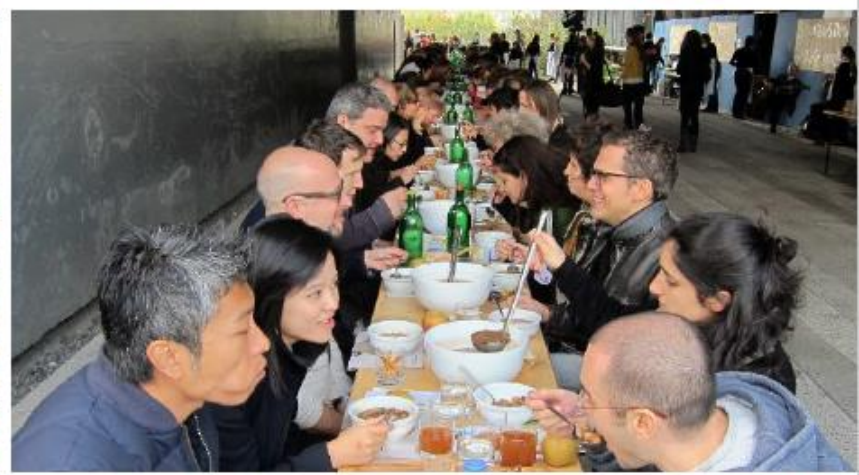
CLEVELAND PUBLIC SQUARE



HIGH LINE, NEW YORK



CENTRAL DELAWARE WATERFRONT MASTER PLAN







NARRATIVE & STORYTELLING



JAMES
CORNER
FIELD
OPERATIONS

SITE BASED ENGAGEMENT

VISION

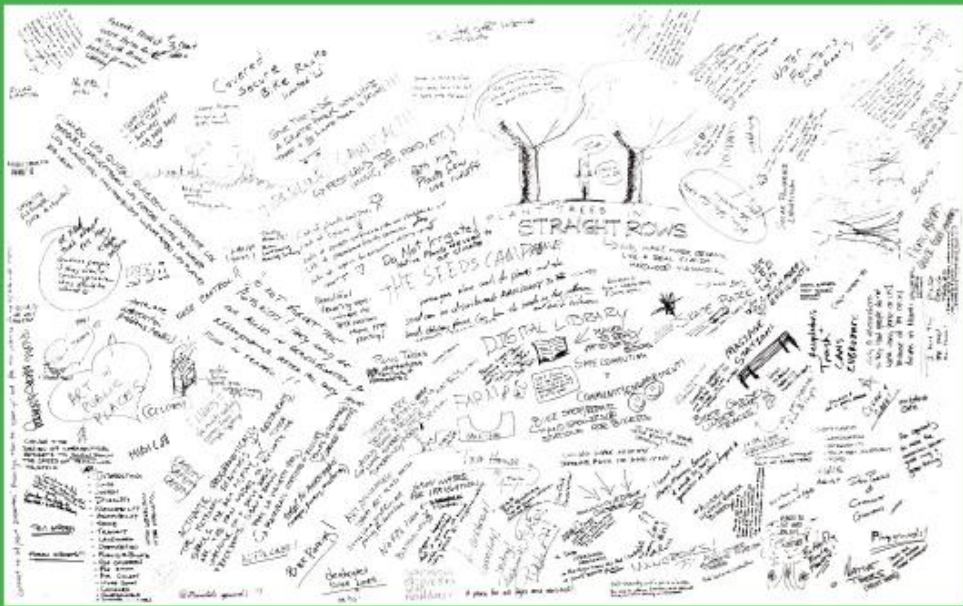
What makes a great linear park + urban trail?



VISIÓN

¿Qué hace un gran parque lineal + sendero urbano?

#audrific.org #thuredream @assadiviana



"Basketball, Handball, Racketball"



"Bike Station"



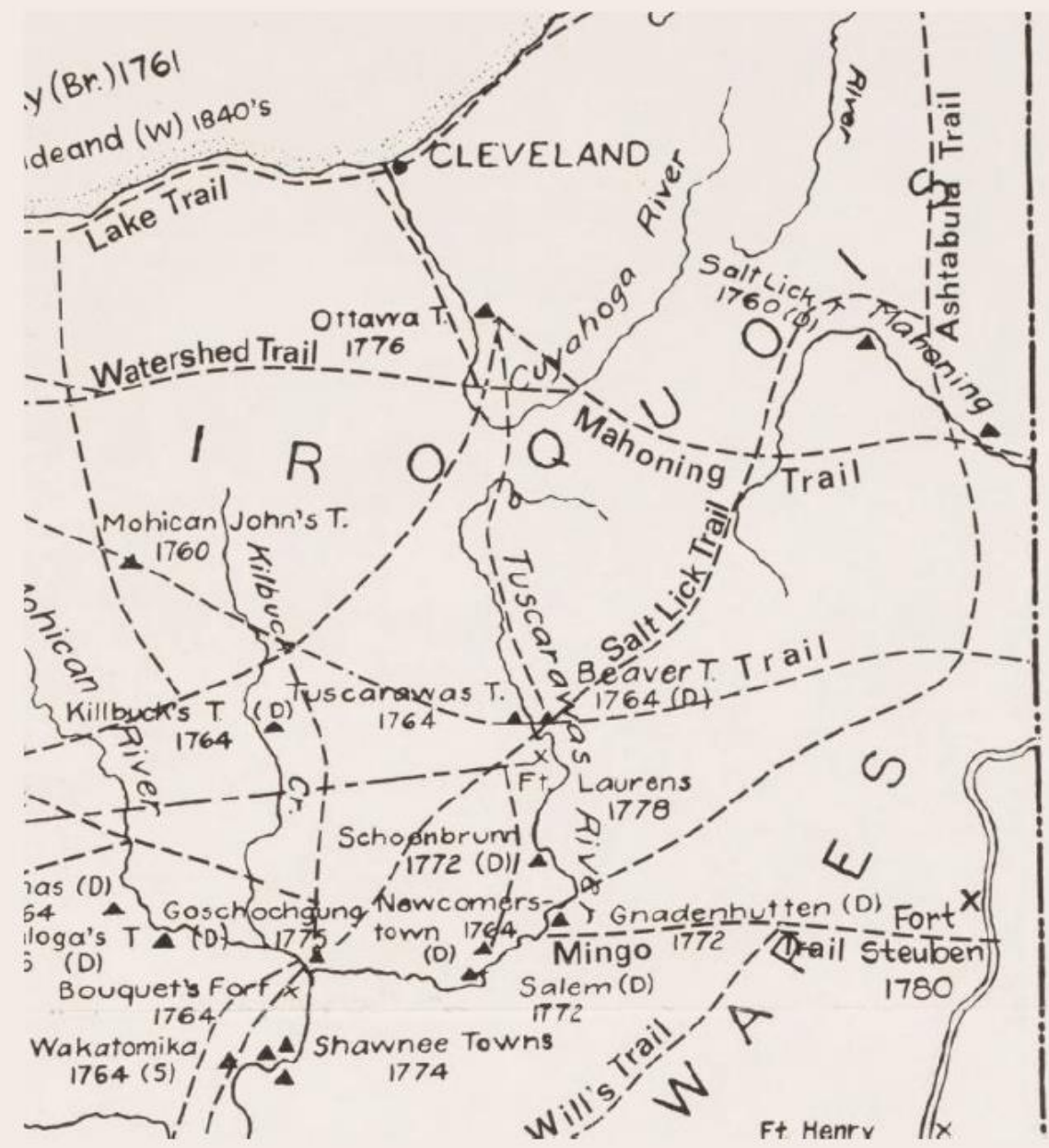
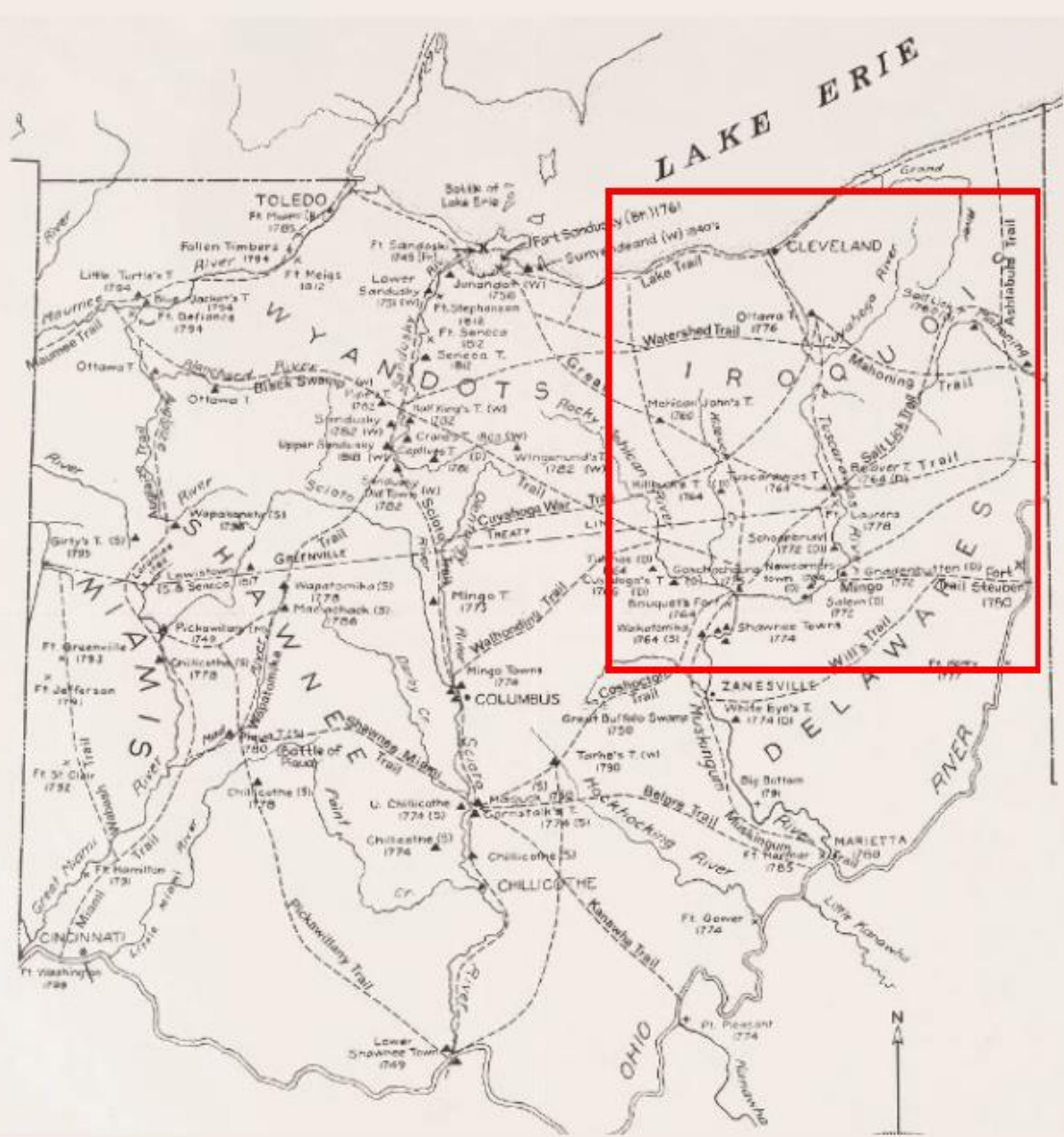
"Brickell's Living Room and Civic Space"



LEADING WITH VISION

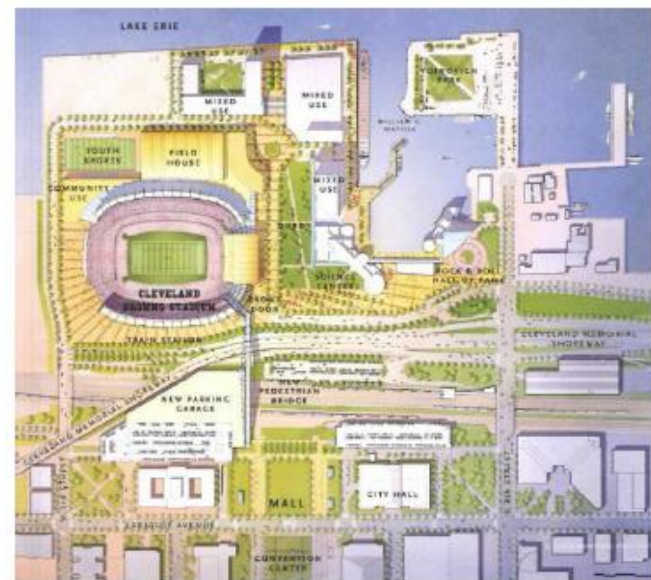
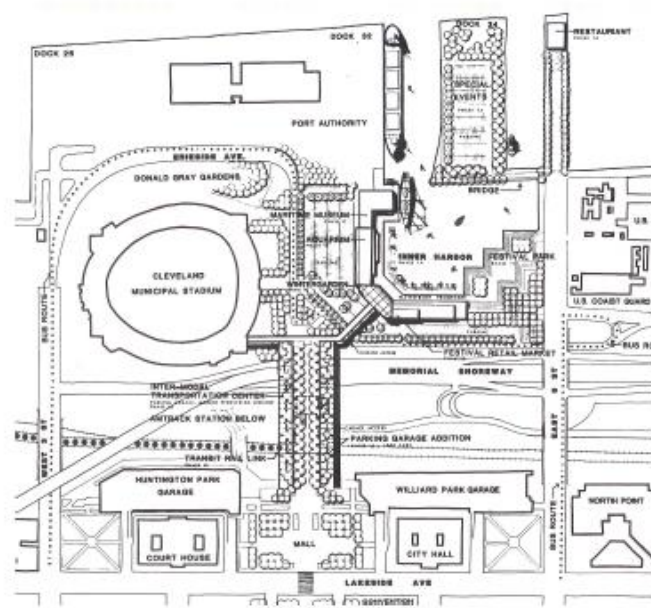
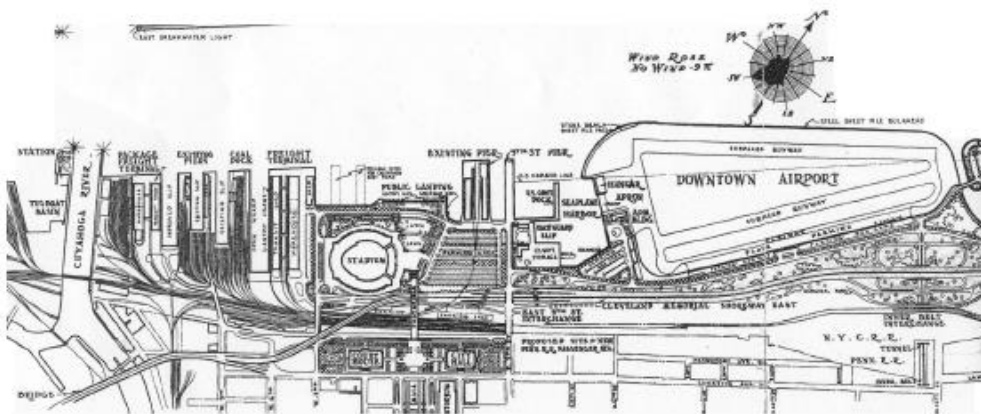


FOSTERING STEWARDSHIP



Source: Ohio Indian village sites and trails, done by H.C. Shetrone and R.B. Sherman of the Ohio Historical Society

INDIGENOUS VILLAGE SITES & TRAILS



LAKEFRONT PLANS & EVOLUTION





CONNECTIVITY



SAN FRANCISCO

PRESIDIO TUNNEL TOPS





SAN FRANCISCO
PRESIDIO TUNNEL TOPS





SAN FRANCISCO
PRESIDIO TUNNEL TOPS



JAMES
CORNER
FIELD
OPERATIONS

SEATTLE
CENTRAL WATERFRONT



SEATTLE
CENTRAL WATERFRONT

Jan. 10, 2019

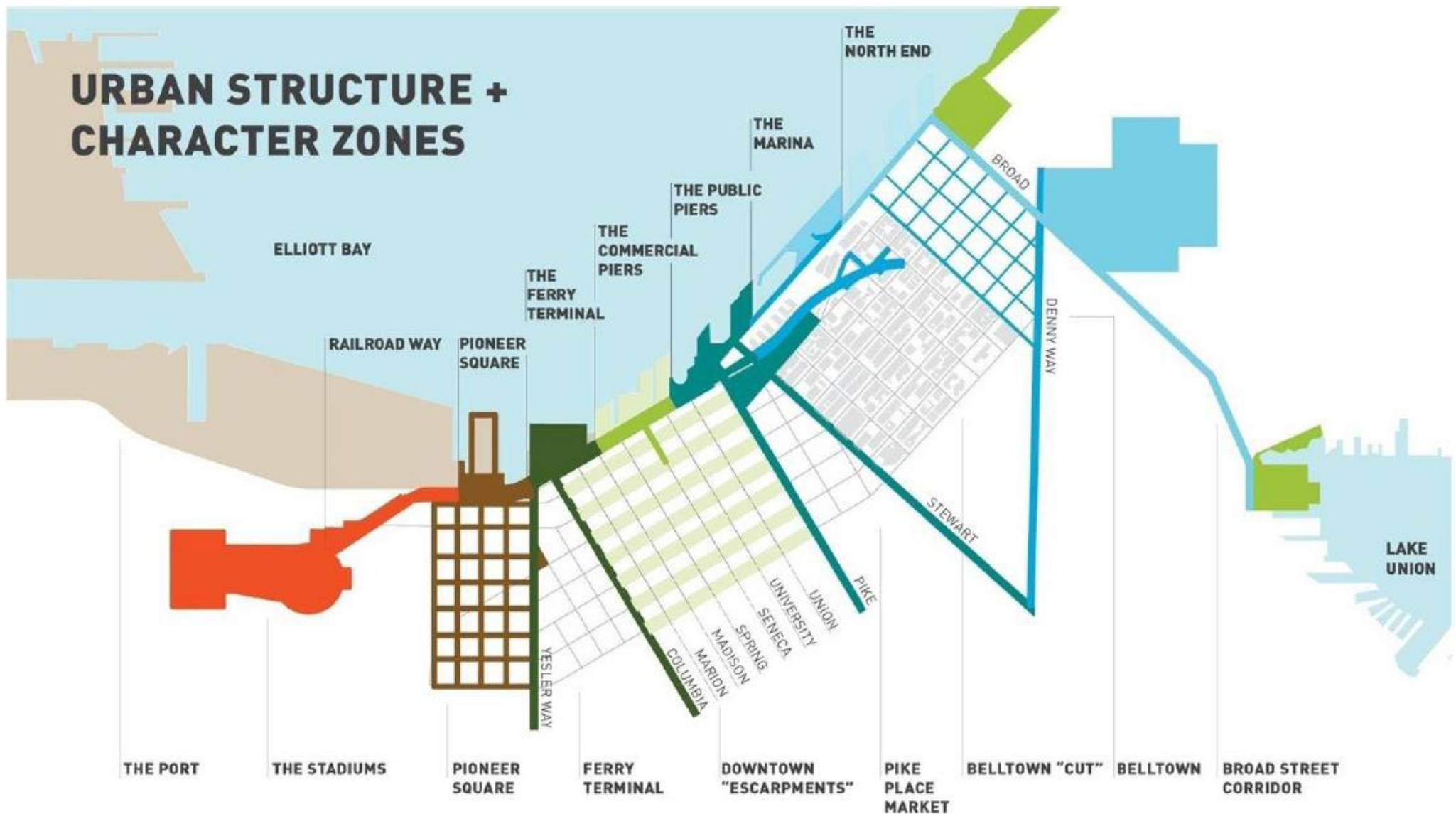


May 13, 2019



FEASIBILITY

URBAN STRUCTURE + CHARACTER ZONES



THE PORT THE STADIUMS PIONEER SQUARE FERRY TERMINAL DOWNTOWN "ESCARPMENTS" PIKE PLACE MARKET BELLTOWN "CUT" BELLTOWN BROAD STREET CORRIDOR



SEATTLE CENTRAL WATERFRONT

LIGHT PENETRATING SURFACE



PERMEABLE PROMENADE



NATIVE SHORELINE HABITATS



SOLAR LIT RAILING



STORMWATER GARDENS



RESTORED KELP FOREST



JUVENILE SALMON MIGRATION CORRIDOR



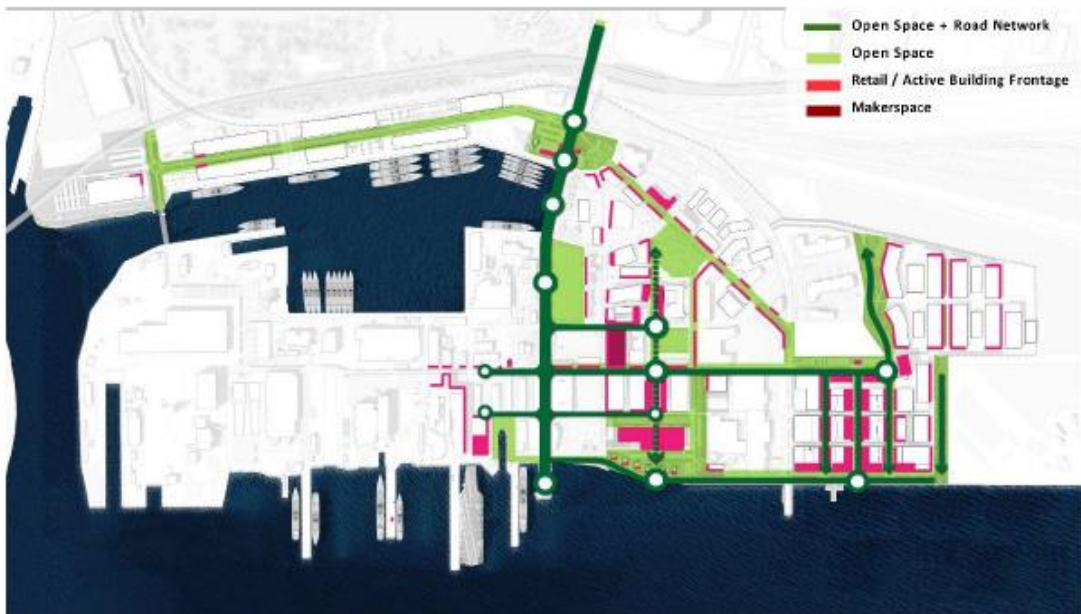


JAMES
CORNER
FIELD
OPERATIONS

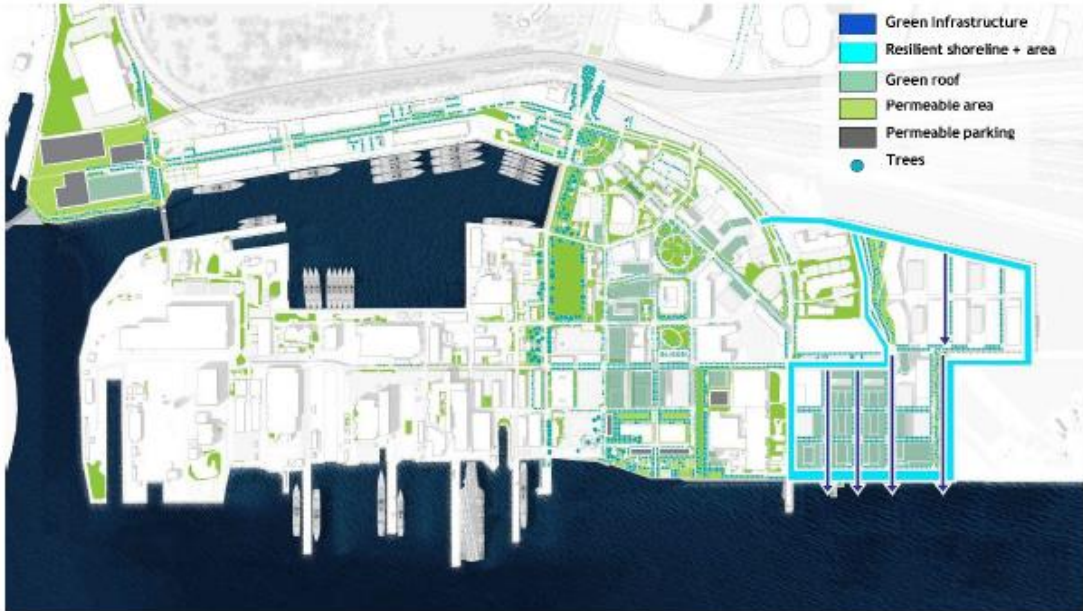
SEATTLE
CENTRAL WATERFRONT



PHILADELPHIA
NAVY YARD



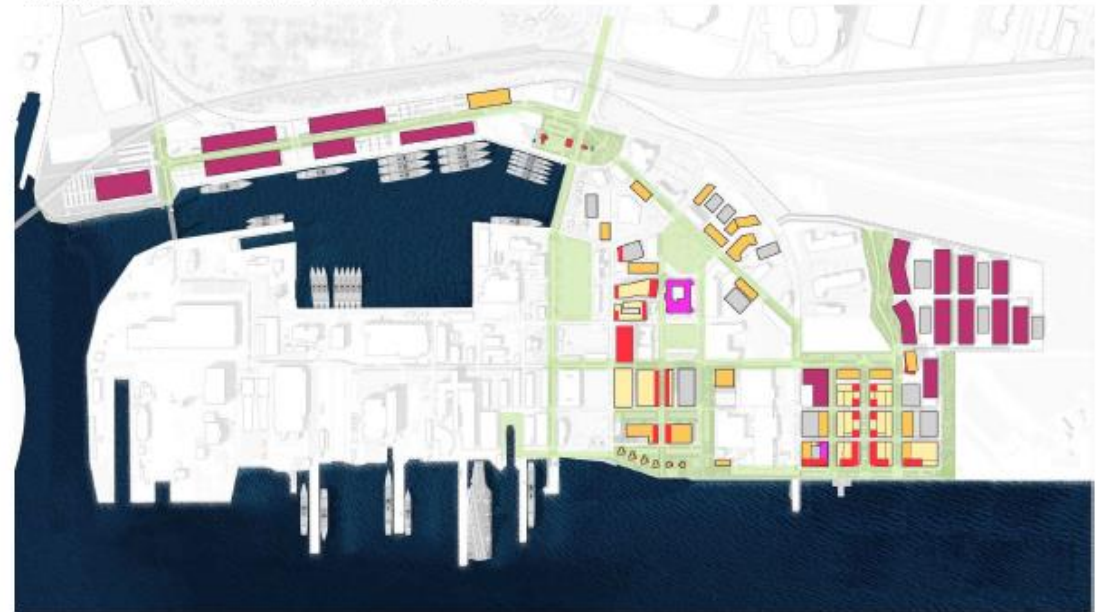
Spaces throughout the site are publicly accessible



A storm and floodwater strategy is integrated throughout the site, providing long-term resilient solutions for climate adaptation



A robust multimodal network connects to and within the Navy Yard



New development densifies and diversifies uses while preserving and activating open space

PHILADELPHIA NAVY YARD



PHILADELPHIA
NAVY YARD



Luminothérapie, Montreal



The Loop, Toronto



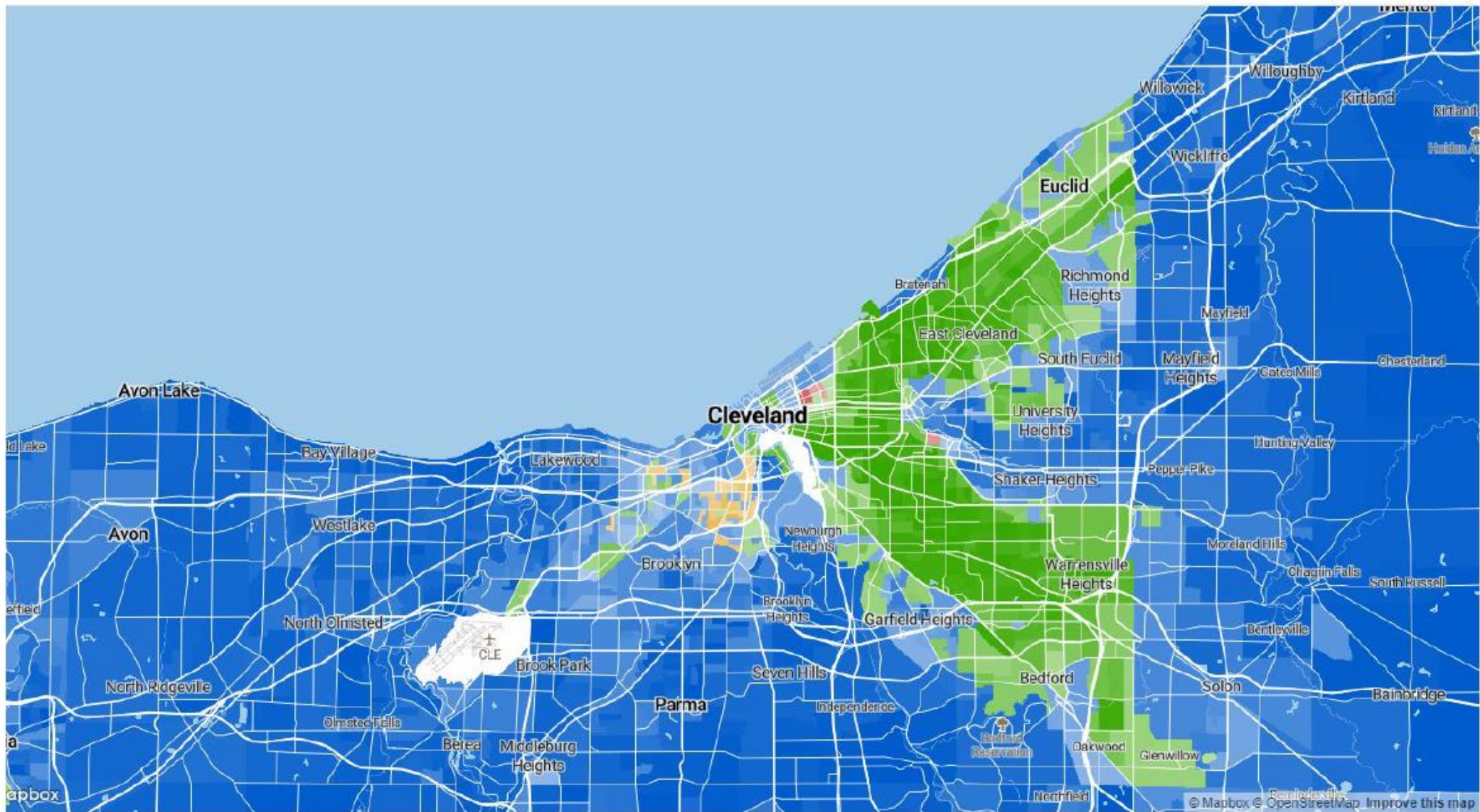
Warming Stations, Toronto

WINTER ACTIVATION



Luminary Loppet Winter Festival, Minneapolis

EQUITY



Majority Race Key



INSERT



BROOKLYN
DOMINO PARK



BROOKLYN
DOMINO PARK



BROOKLYN
DOMINO PARK



DOMINO PARK

BROOKLYN
DOMINO PARK

RESILIENCY



THE RIDGE

100 YR
+ 12'

100 YR
+ 6'

500 YR FLOOD

100 YR FLOOD



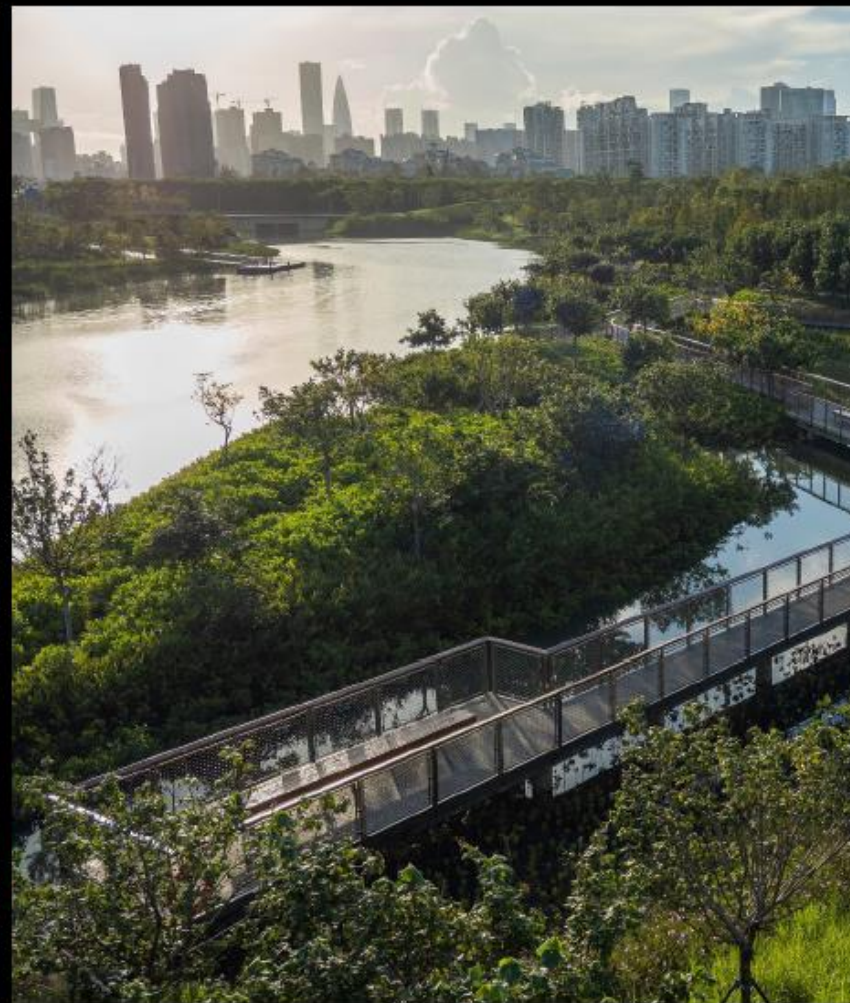
MEMPHIS
SHELBY FARMS PARK



2010



2020



TODAY

QIANHAI
GUIWAN PARK

Lisa Switkin will be the Design Director establishing the overall vision and planning strategy, will advise on public engagement, and participate in key milestones and presentations.

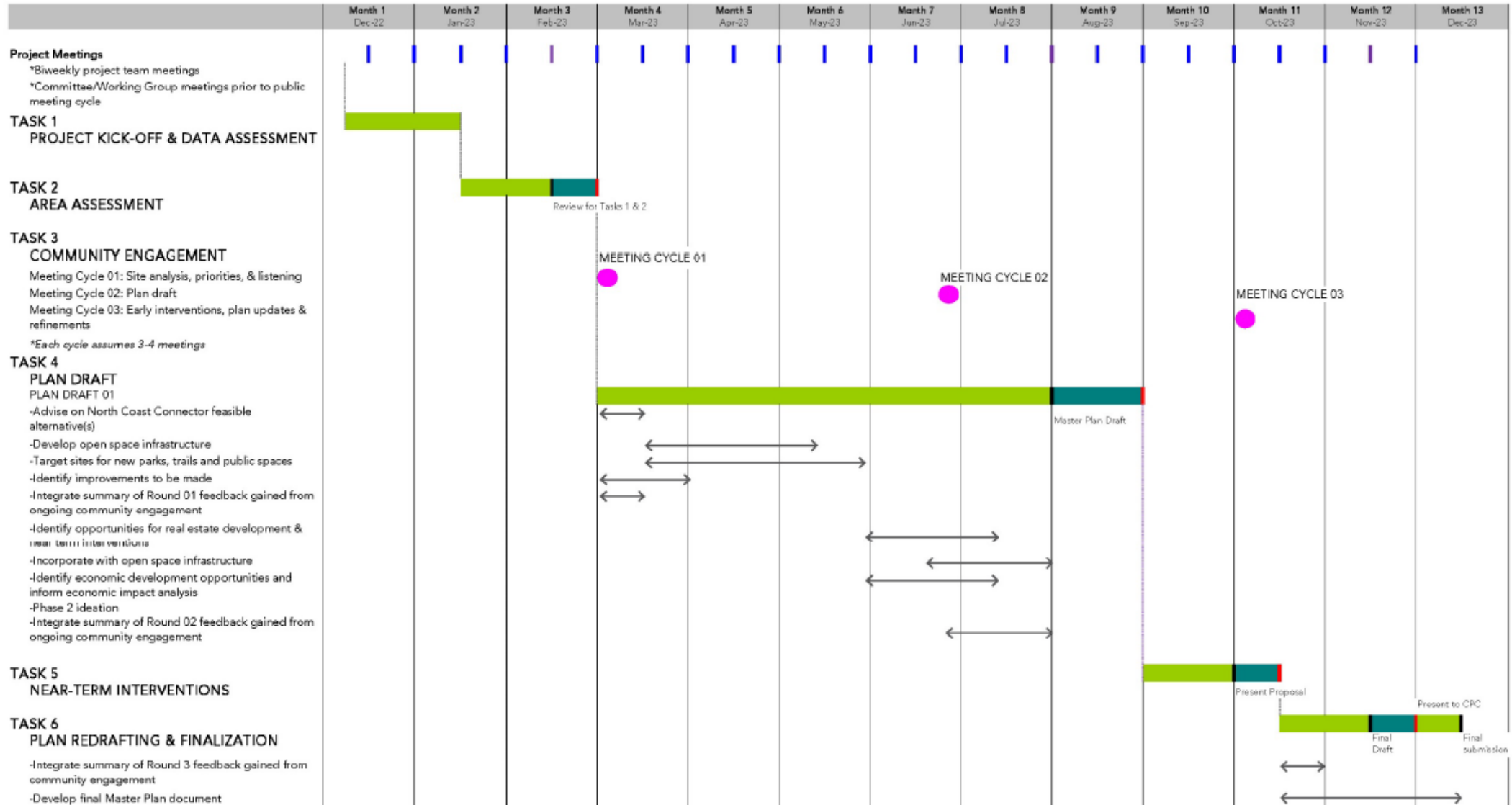
Sahar Moin will be the Project Manager, ensuring that the overall project goals are realized through all disciplines and deliverables. She will be responsible for coordinating directly with the Client and consultant team and will be the primary day-to-day point of contact for both.

Cricket Day will be the Project Design & Planning Lead responsible for all aspects of the master plan, including design, planning, analysis and coordination. He will participate in working sessions, workshops, meetings and discussions.

FIELD OPERATIONS KEY PERSONNEL

design / investigation
client/agency review

major deadline
feedback and notice to proceed
major public meetings
Project Coordination Team meeting
Committee/Working Groups meetings



PROJECT SCHEDULE



