

Downtown Lakefront Masterplan

(near term interventions)

ARPA funding: **\$1M**

Timeline: Installations in 2023 and 2024, which will last 3-5 years

Key Partners: Greater Cleveland Partnership, Field Operations

Project:

Near term interventions demonstrate commitment and the city's promise that redevelopment of the lakefront for the benefit of all Clevelanders is a priority.

Demonstrating the projects through semi-temporary means are great ways to analyze their value to Clevelanders. Bike lanes, racks, benches, shade structures, stages, pop-up vendors, fishing area enhancements, ADA docks for kayak launches, winter warming huts, play equipment, screens for movie nights, public art can be responsive to the community's input and serve to continue to solicit input and shape the final lakefront vision.



Inspiration



Inspiration

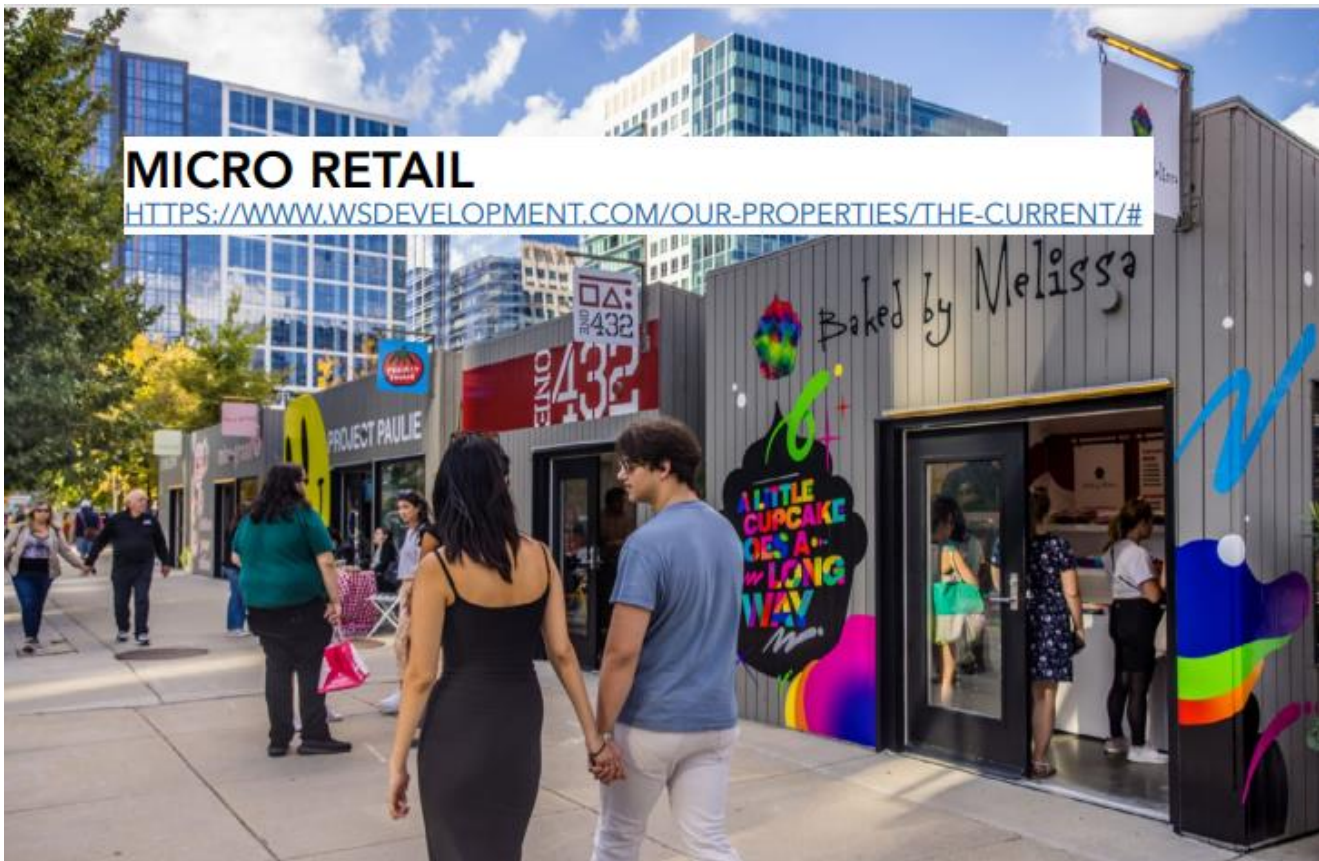


CITY OF CLEVELAND
Mayor Justin M. Bibb

Inspiration

MICRO RETAIL

[HTTPS://WWW.WSDEVELOPMENT.COM/OUR-PROPERTIES/THE-CURRENT/#](https://www.wsdevelopment.com/our-properties/the-current/#)



COMMUNITY GARDEN / URBAN FARMS



Inspiration

WARMING HUTS COMPETITION, WINNIPEG

